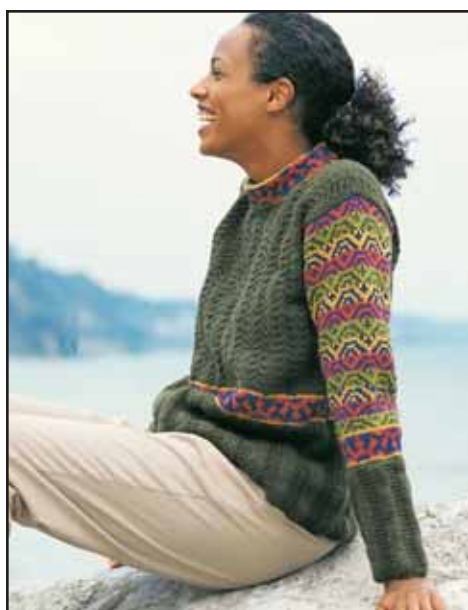


Patons
Classic Wool

Patons
DECOR



HARVEST SUN

SIZES

Bust measurement

Small 30-32 ins [76-81 cm]

Medium 34-36 ins [86-91 cm]

Large 38-40 ins [97-102 cm]

Extra-Large

42-44 ins [107-112 cm]

Finished bust

Small 40 ins [101.5 cm]

Medium 43 ins [109 cm]

Large 46½ ins [118.5 cm]

Extra-Large

49½ ins [125.5 cm]

MATERIALS

Patons Classic Wool (100 g/3.5 oz)
or **Patons Décor** (100 g/3.5 oz)

Size S M L XL

Main Color (MC) (Dk Olive)

4 5 6 7 **balls**

Contrast A (Gold)

1 1 1 1 **ball**

Contrast B (Purple)

1 1 1 1 **ball**

Contrast C (Orange)

1 1 1 1 **ball**

Contrast D (Navy)

1 1 1 1 **ball**

Contrast E (Green)

1 1 1 1 **ball**

Size 4.5 mm (U.S. 7) knitting
needles or size needed to obtain
tension. 2 st holders.

TENSION

20 sts and 26 rows = 4 ins [10 cm]
in stocking st.

ABBREVIATIONS

yf = bring yarn in front.

yb = bring yarn in back.

Sl5P = Slip next 5 sts purlwise.

INSTRUCTIONS

*The instructions are written for
smallest size. If changes are
necessary for larger sizes the
instructions will be written thus ().*

Note: When working from chart,
carry yarn not in use loosely
across WS of work but never over
more than 5 sts. When it must
pass over more than 5 sts, weave
it over and under color in use on
next st or at center point of sts it
passes over. The colors are never
twisted around one another.

BACK

With MC, cast on 100 (108-116-
124**) sts.

1st row: (RS). K4. *P4. K4. Rep
from * to end of row.

2nd row: Purl.

These 2 rows form rib pat.

Cont in rib pat until work from beg
measures 7½ (**8-8½-9**) ins [19
(**20.5-21-23**) cm], ending with RS
facing for next row and inc 10 (**10-
12-12**) sts evenly across last row.
110 (**118-128-136**) sts.

Work Chart I in stocking st to end
of chart, reading **knit** rows from
right to left and **purl** rows from
left to right.

Next row: (WS). With MC, purl,
dec 11 (**11-13-13**) sts evenly
across. 99 (**107-115-123**) sts.

1st row: K3. *yf. Sl5P. yb. K3. Rep
from * to end of row.

2nd row: Purl.

3rd row: K5. *Insert right-hand
needle under loose strand and
knit next st on left-hand needle.
K7. Rep from * to last 6 sts. Insert
right-hand needle under loose



ABBREVIATIONS: www.patonsyarns.com/glossary

Patons

... a part of your life.

P.O. Box 40, Listowel ON N4W 3H3

strand and knit next st on left-hand needle. K5.

4th row: Purl.

These 4 rows form slip-stitch pat. Cont in slip-stitch pat until work from beg measures 15½ (16-16½-17) ins [38 (40.5-42-43) cm], ending with 4th row of pat.

Armhole shaping: Cast off 8 sts beg next 2 rows. 83 (91-99-107) sts.**

Cont in slip st pat until work from beg measures 23 (24-25-26) ins [58.5 (61-66-68.5) cm], ending with 4th row of pat.

Shoulders: Cast off 20 (24-28-32) sts beg next 2 rows. Slip rem 43 sts on a st holder.

FRONT

Work from ** to ** as given for Back.

Cont in slip st pat until work from beg measures 20 (21-22-23) ins [51 (53.5-56-58.5) cm], ending with 4th row of pat.

Neck shaping: Next row: Pat 31 (35-39-43) sts across. **Turn.** Leave rem sts on a spare needle. Dec 1 st at neck edge on next 11 rows. 20 (24-28-32) sts.

Cont even in pat until Front measures same length as Back to shoulder, ending with RS facing for next row. Cast off.

With RS of work facing, slip next 21 sts from spare needle onto a st holder. Join yarn to rem sts and pat to end of row. Dec 1 st at neck edge on next 11 rows. 20 (24-27-30) sts.

Cont even in pat until Front measures same length as Back to shoulder, ending with RS facing for next row. Cast off.

SLEEVES

With MC, cast on 44 (44-52-52) sts.

Work in rib pat as given for Back, inc 1 st each end of needle on 5th, and every following 6th row until there are 52 (56-60-64) sts, taking inc sts into pat. Cont even in pat until work from beg measures 6 (6½-6½-7) ins [15 (16.5-16.5-18) cm] ending with **WS** facing for next row.

Next row: Purl, inc 4 (4-6-6) sts evenly across. 56 (60-66-70) sts.

Work Chart II in stocking st to end of chart, reading **knit** rows from **right** to left and **purl** rows from **left** to right, noting side inc on 5th and following 6th rows to 78 (84-90-94) sts. Cast off. Place markers on side edges of sleeves, 1½ ins [4 cm] down from cast off edge.

FINISHING

Pin garment pieces to measurements. Cover with a damp cloth, leaving to dry.

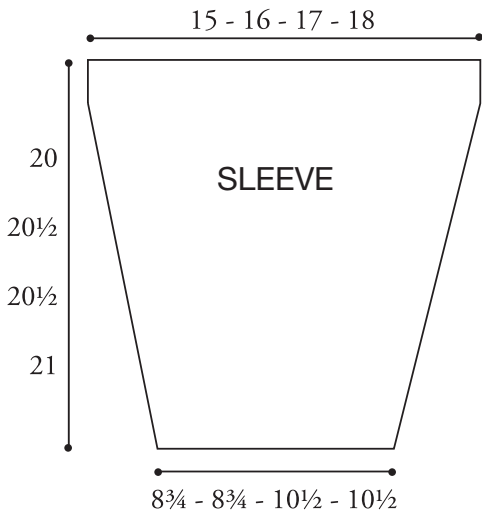
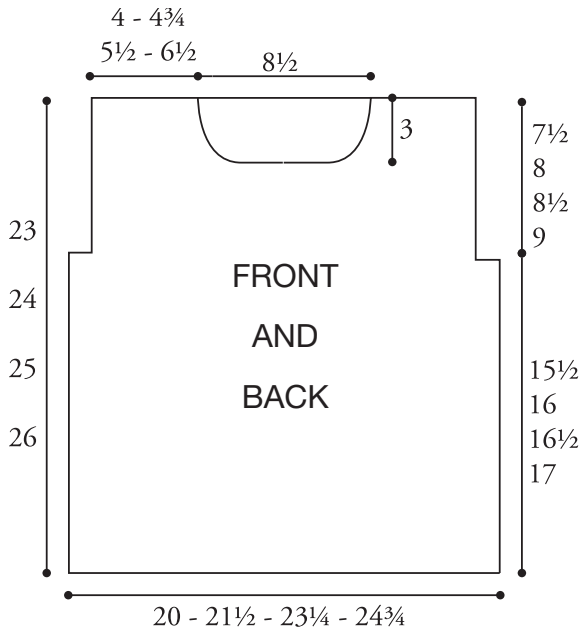
Collar: Sew right shoulder seam. With RS of work facing and MC, pick up and knit 16 sts down left front neck edge. K21 from front st holder. Pick up and knit 16 sts up right front neck edge. K43 from back st holder. 96 sts.

Work Chart III to end of chart, reading **knit** rows from **right** to left and **purl** rows from **left** to right and noting that 24 st rep will be worked 4 times.

With MC, work 10 rows in stocking st ending with RS facing for next row. Cast off **loosely**.

Sew left shoulder seam and collar seam. Fold collar in half to WS and sew loosely in position. Sew in sleeves placing rows above markers along cast off sts at armholes to form square armholes. Sew side and sleeve seams.





Key

- = MC
- ▬ = Contrast C
- = Contrast A
- ▮ = Contrast D
- ◼ = Contrast B
- ▧ = Contrast E

CHART III

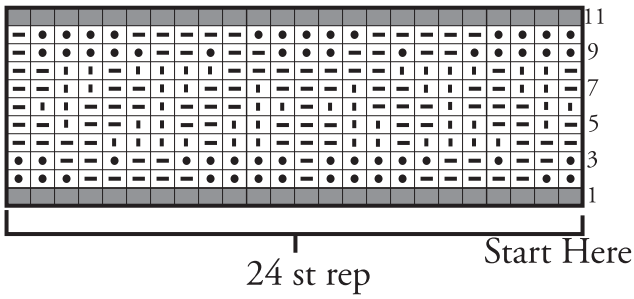


CHART I

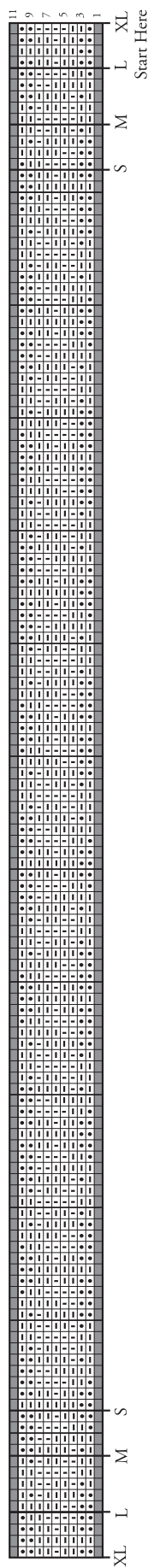
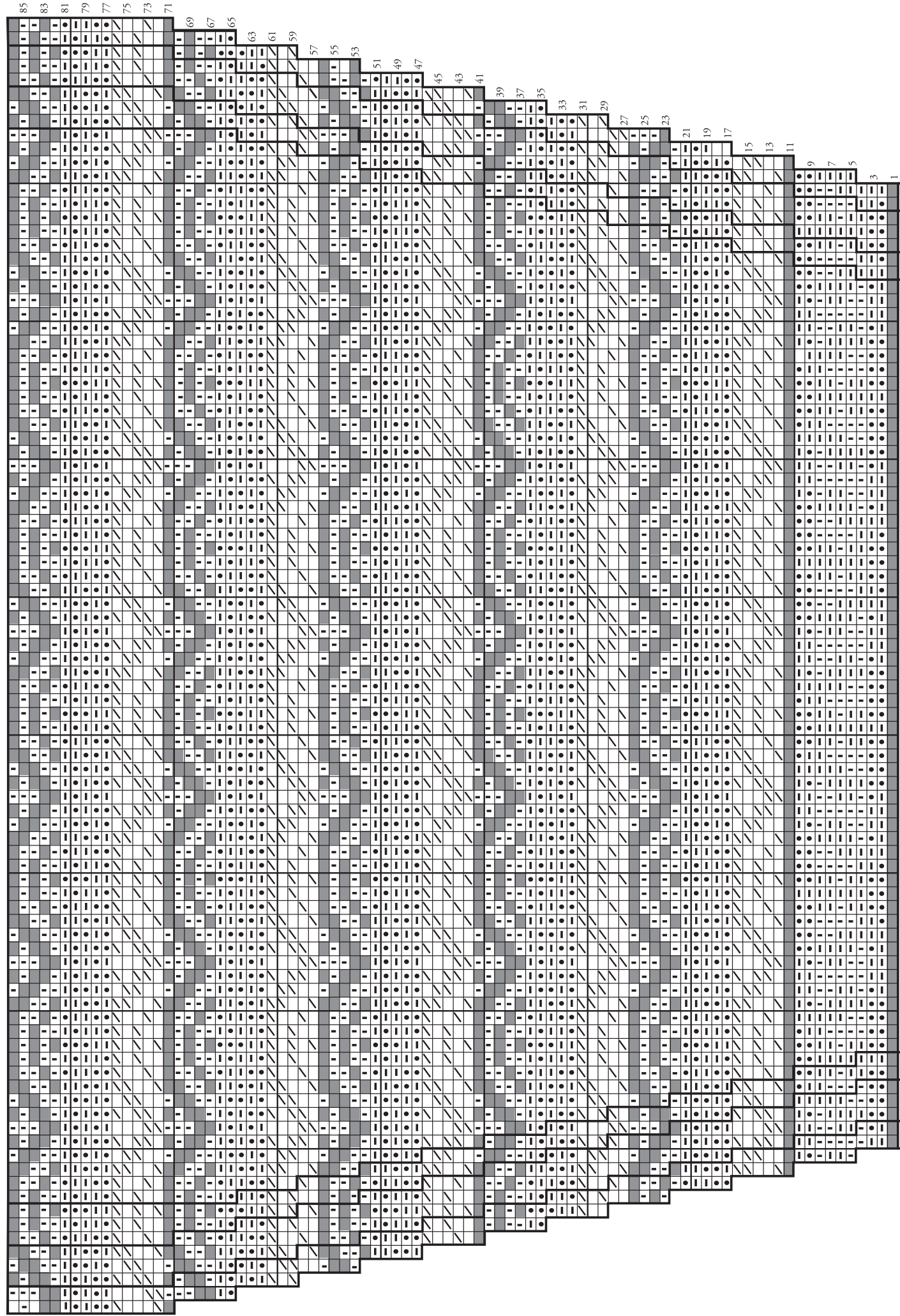


CHART II



S M L XL
Start Here

XL L M S