

Patons® Classic Wool

Patons® DECOR



FAMILY FUN (ADULTS)

SIZES

Bust/chest measurement

Small 30-32 ins [76-81 cm]

Medium 34-36 ins [86-91 cm]

Large 38-40 ins [97-102 cm]

Extra-Large
42-44 ins [107-112cm]

Finished bust/chest

Small 43 ins [109 cm]

Medium 47 ins [119.5 cm]

Large 51 ins [129.5 cm]

Extra-Large
53 ins [134.5 cm]

MATERIALS

Patons Classic Wool

(100 g/3.5 oz)

or Patons Décor (100 g/3.5 oz)

Size S M L XL

Main color (MC) (Navy or Grey)

6 7 7 8 balls

Contrast A (Grey or Navy)

1 2 2 2 ball(s)

Contrast B (Lt Blue)

1 1 1 1 ball

Contrast C (Purple)

1 1 1 1 ball

Sizes 4 mm (U.S. 6) and 4.5 mm (U.S. 7) knitting needles **or size needed to obtain tension.** 2 st holders.

INSTRUCTIONS

The instructions are written for smallest size. If changes are necessary for larger sizes the instructions will be written thus ().

Note: When working from charts, carry yarn not in use loosely across WS of work but never over more than 5 sts. When it must pass over more than 5 sts, weave it over and under color in use on next st or at center point of sts it passes over. The colors are never twisted around one another.

BACK

**With MC and smaller needles cast on 110 (118-130-134) sts.

1st row: (RS). K2. *P2. K2. Rep from * to end of row.

2nd row: P2. *K2. P2. Rep from * to end of row.

Rep these 2 rows (K2. P2) ribbing for 3 ins [8 cm] ending on a 2nd row and inc 3 (5-3-5) sts evenly across last row. 113 (123-133-139) sts.**

Change to larger needles and work Chart I in stocking st to end of chart reading **knit** rows from **right** to left and **purl** rows from **left** to right noting that rem 37 (37-39-41) sts will be left on a st holder.

FRONT

Work from ** to ** as given for Back.

Change to larger needles and work Chart I in stocking st to row 130 (130-132-136) of chart reading **knit** rows from **right** to left and **purl** rows from **left** to right.



ABBREVIATIONS: www.patonsyarns.com/glossary

Patons®

... a part of your life.

P.O. Box 40, Listowel ON N4W 3H3

Neck shaping: Next row: (RS). Work across 47 (**52-57-60**) sts from chart (neck edge). **Turn.** Leave rem sts on a spare needle.

Keeping cont of chart, dec 1 st at neck edge on next 4 (**4-4-6**) rows, then on following 5 (**5-6-5**) alt rows. 38 (**43-47-49**) sts. Work 3 (**5-5-5**) rows even from chart, ending with RS facing for next row.

Shoulder shaping: Cast off 13 (**14-16-16**) sts beg next and following alt row. Work 1 row even. Cast off rem 12 (**15-15-17**) sts.

With RS of work facing slip next 19 sts from spare needle onto a st holder. Join yarn to rem sts and work chart to end of row.

Keeping cont of chart, dec 1 st at neck edge on next 4 (**4-4-6**) rows, then on following 5 (**5-6-5**) alt rows. 38 (**43-47-49**) sts.

Work 4 (**6-6-6**) rows even from chart, ending with **WS** facing for next row.

Shoulder shaping: Cast off 13 (**14-16-16**) sts beg next and following alt row. Work 1 row even. Cast off rem 12 (**15-15-17**) sts.

SLEEVES

With MC and smaller needles cast on 46 (**46-50-54**) sts. Work 3 ins [8 cm] in (K2. P2) ribbing as given for Back ending on a 2nd row and inc 17 (**19-17-15**) sts evenly across last row. 63 (**65-67-69**) sts.

Change to larger needles and work Chart II in stocking st to end of chart reading **knit** rows from **right** to left and **purl** rows from **left** to right, noting side incs on 5th and following 4th rows until there are 87 (**95-107-111**) sts, then every following 6th row until there are 99 (**105-111-115**) sts.

FINISHING

Pin garment pieces to measurements and press lightly with a damp cloth leaving to dry on garment pieces.

Neckband: Sew right shoulder seam. With RS of work facing, MC and smaller needles, pick up and knit 21 (**23-24-25**) sts down left front neck edge. Knit across 19 sts from front st holder. Pick up and knit 21 (**23-24-25**) sts up right front neck edge. Knit across 37 (**37-39-41**) sts from back st holder. 98 (**102-106-110**) sts.

Beg and ending on a 2nd row, work 2 ins [5 cm] in (K2. P2) ribbing as given for Back. Cast off in ribbing. Sew left shoulder and neckband seam.

Place markers on front and back side edges 9½ (**10-10½-11**) ins [24 (**25.5-26.5-28**) cm] down from shoulder seams. Sew in sleeves between markers. Sew side and sleeve seams. Press seams.

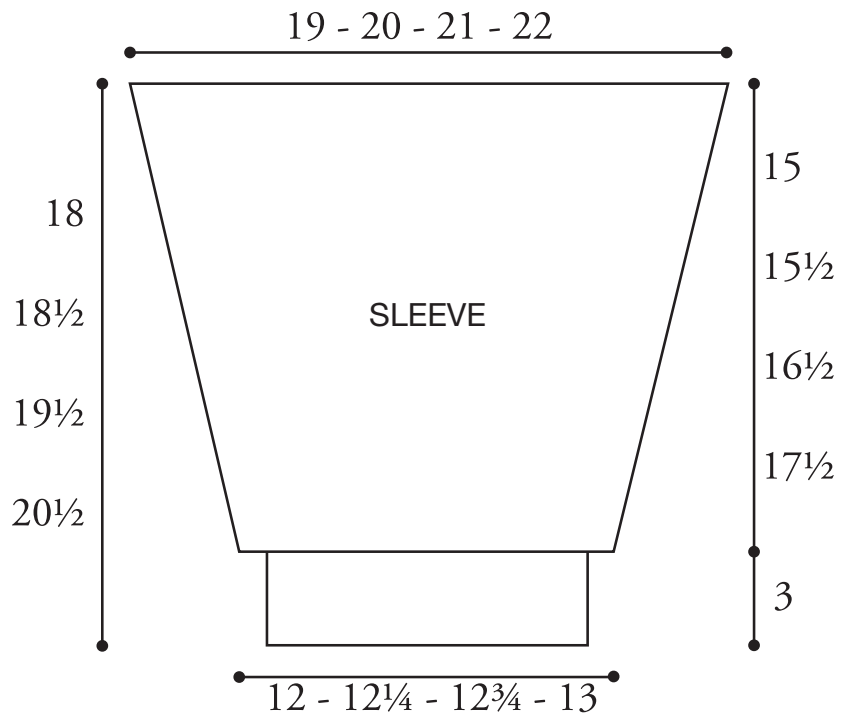
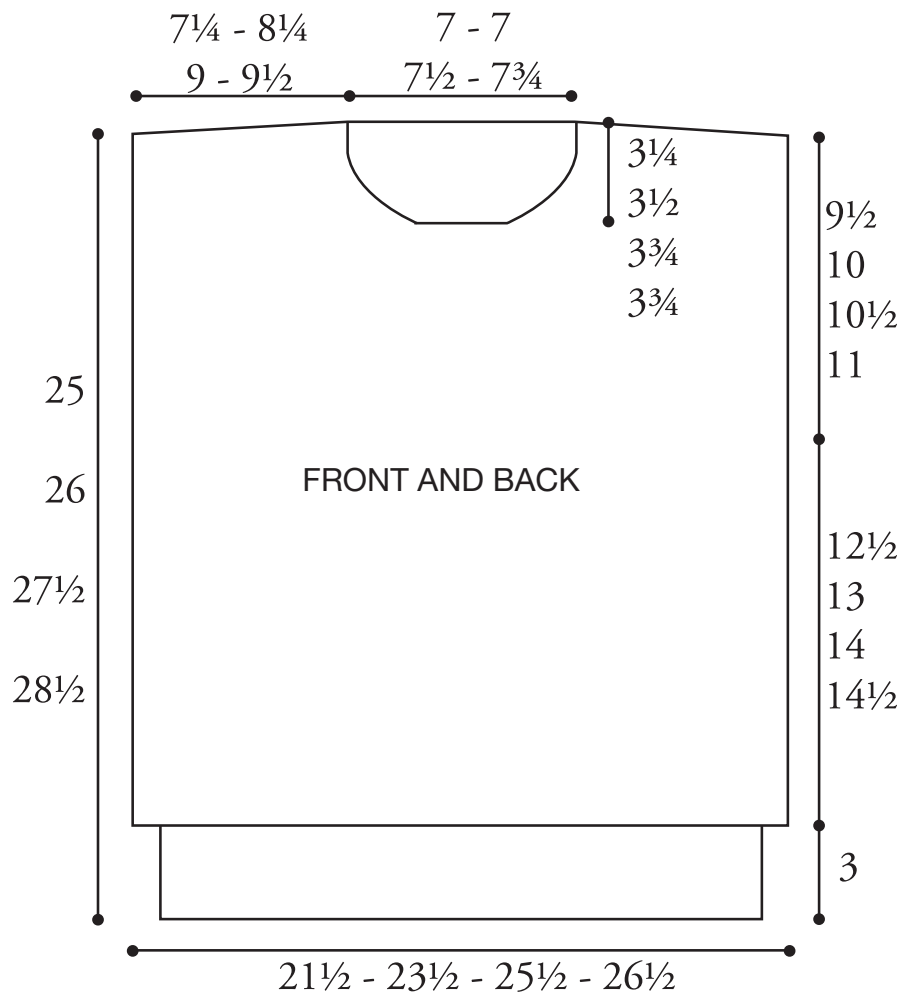
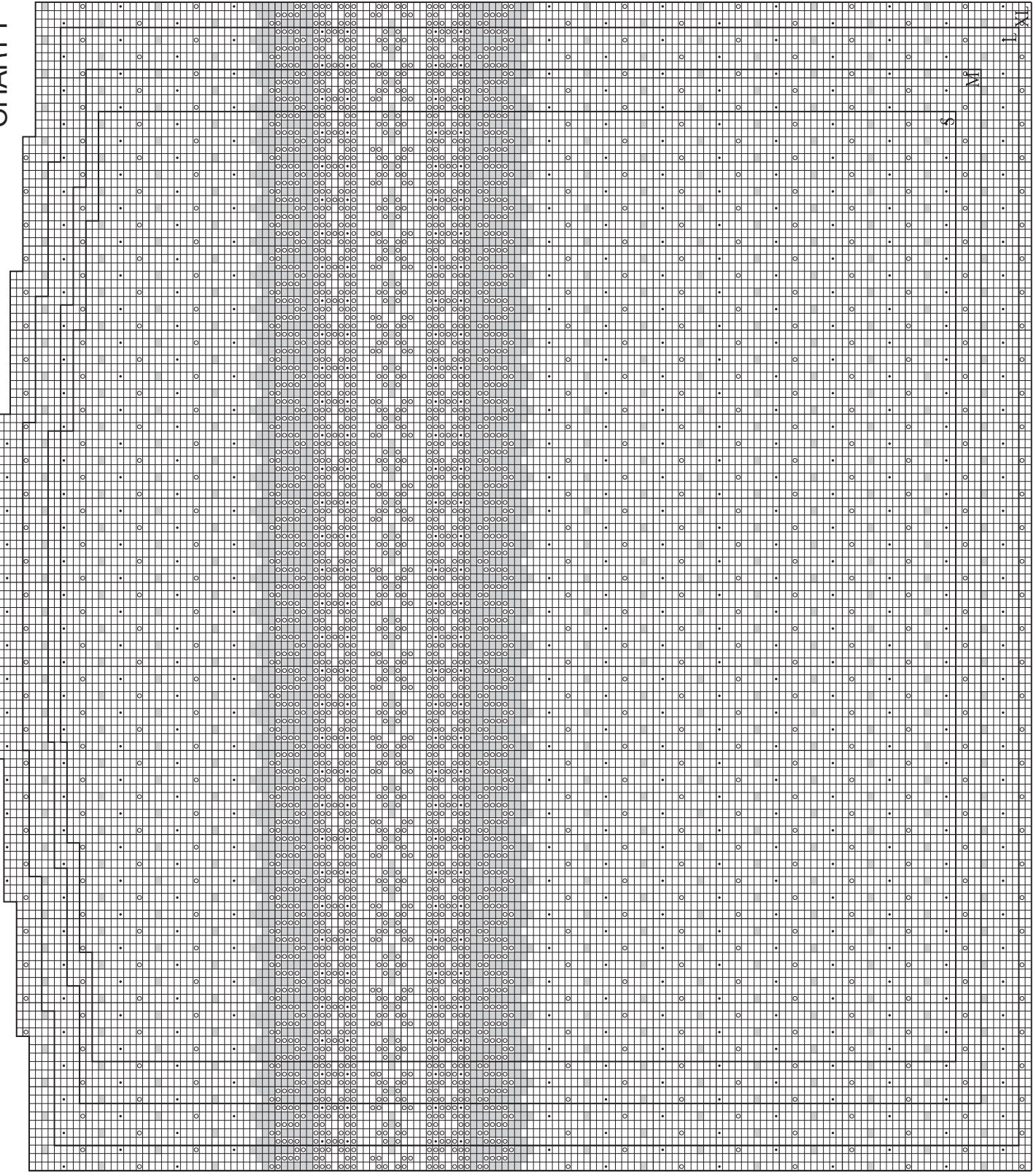


CHART I

Key
= MC
= Contrast A
= Contrast B
= Contrast C



Start Here

S M L XL

XL L M S

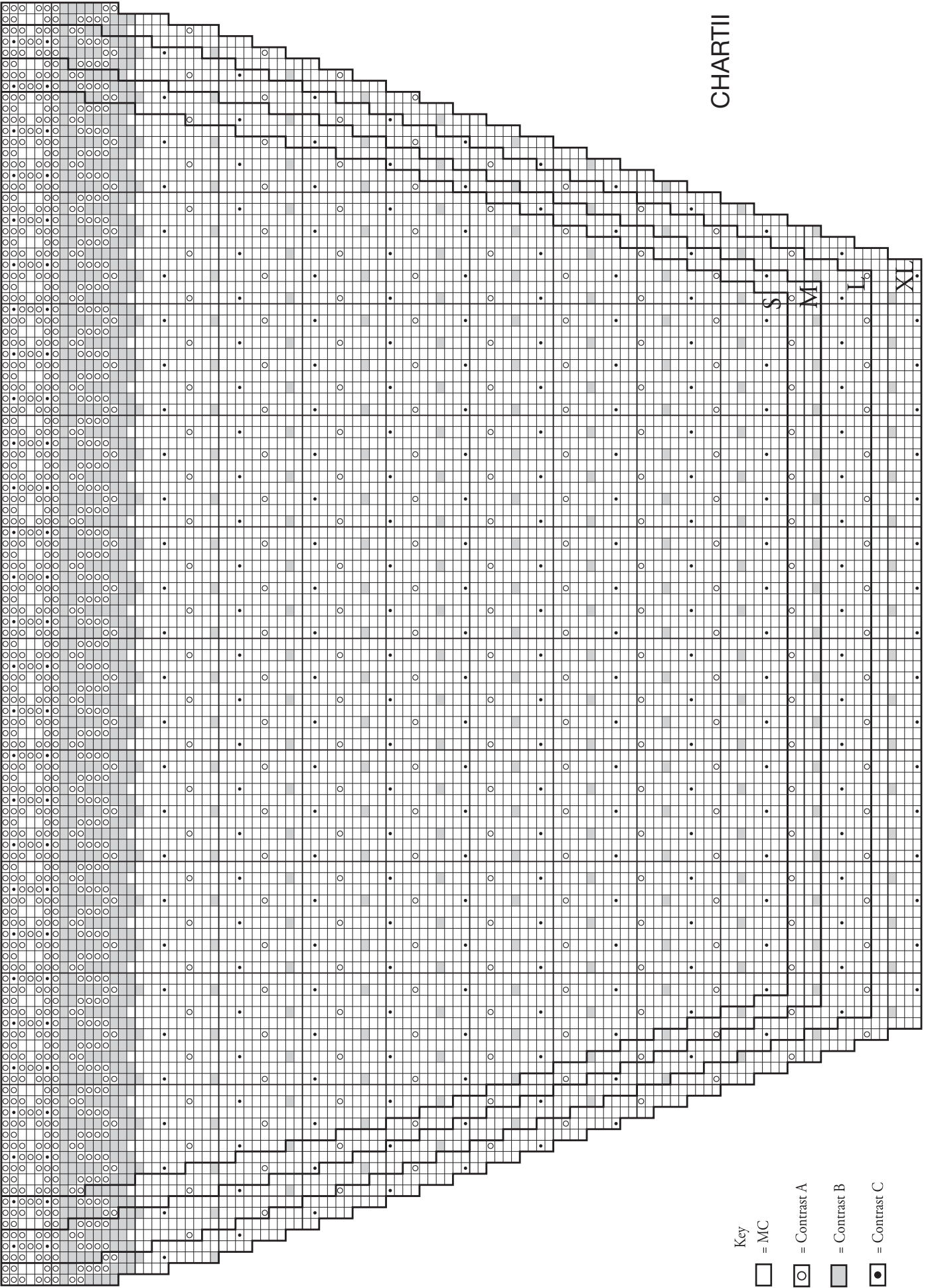


CHART III

- Key
- = MC
 - = Contrast A
 - = Contrast B
 - = Contrast C

Start Here