

Patons® Classic Wool

Patons® DECOR



BY DESIGN

SIZES

Bust measurement

Small 30-32 ins [76-81 cm]

Medium 34-36 ins [86-91 cm]

Large 38-40 ins [97-102cm]

Extra-Large

42-44 ins [107-112cm]

Finished bust

Small 42 ins [107 cm]

Medium 45 ins [114.5 cm]

Large 49 ins [124.5 cm]

Extra-Large

51 ins [129.5 cm]

MATERIALS

Patons Classic Wool (100 g/3.5 oz)
or Patons Décor (100 g/3.5 oz)

Size S M L XL

Main color (MC) (Black)
5 5 6 6 balls

Contrast A (Aran)
4 4 5 5 balls

Sizes 4 mm (U.S. 6) and 4.5 mm (U.S. 7) knitting needles
or size needed to obtain
tension. 2 st holders.

TENSION

21 sts and 23½ rows = 4 ins
[10 cm] with larger needles in
fair isle pat.

INSTRUCTIONS

*The instructions are written for
smallest size. If changes are
necessary for larger sizes the
instructions will be written thus
().*

Note: When working from
charts, carry yarn not in use
loosely across WS work but
never over more than 5 sts.
When it must pass over more
than 5 sts, weave it over and

under color in use on next st
or at center point of sts it
passes over. The colors are
never twisted around one
another.

BACK

**With MC and smaller
needles cast on 106 (114-124-
128) sts.

Beg with a knit row, work 6
rows stocking st inc 5 sts
evenly across last row. 111
(119-129-133) sts.**

Change to larger needles and
work Chart I in stocking st to
end of chart reading **knit** rows
from **right** to left and **purl**
rows from **left** to right. Leave
rem 35 (37-39-41) sts on a st
holder.

FRONT

Work from ** to ** as given for
Back.

Change to larger needles and
work Chart I in stocking st to
row 128 (130-136-136) of
chart reading **knit** rows from
right to left and **purl** rows
from **left** to right.



ABBREVIATIONS: www.patonsyarns.com/glossary

Patons

... a part of your life.

P.O. Box 40, Listowel ON N4W 3H3

Neck shaping: Next row: (RS). Work across 47 (**50-55-56**) sts from chart (neck edge). **Turn.** Leave rem sts on a spare needle.

Keeping cont of chart, dec 1 st at neck edge on next 4 rows, then on following 5 (**5-6-6**) alt rows.

Work 3 (**5-3-5**) rows even from chart, ending with RS facing for next row.

Shoulder shaping: Cast off 13 (**14-15-15**) sts beg next and following alt row. Work 1 row even. Cast off rem 12 (**13-15-16**) sts.

With RS of work facing slip next 17 (**19-19-21**) sts from spare needle onto a st holder. Join yarn to rem sts and work chart to end of row.

Keeping cont of chart, dec 1 st at neck edge on next 4 rows, then on following 5 (**5-6-6**) alt rows.

Work 4 (**6-4-6**) rows even from chart, ending with **WS** facing for next row.

Shoulder shaping: Cast off 13 (**14-15-15**) sts beg next and following alt row. Work 1 row even. Cast off rem 12 (**13-15-16**) sts.

SLEEVES

With MC and smaller needles cast on 51 (**53-55-57**) sts.

Beg with a knit row, work 6 rows stocking st inc 4 sts evenly across last row. 55 (**57-59-61**) sts.

Change to larger needles and work Chart II in stocking st to end of chart reading **knit** rows from **right** to left and **purl** rows from **left** to right noting side incs on 5th and following 4th rows until there are 99 (**105-111-115**) sts.

FINISHING

Pin garment pieces to measurements and press lightly with a damp cloth leaving to dry on garment pieces.

Neckband: Sew right shoulder seam. With RS of work facing, MC and smaller needles, pick up and knit 21 (**23-23-25**) sts down left front neck edge. Knit across 17 (**19-19-21**) sts from front st holder dec 1 st at center. Pick up and knit 21 (**23-23-25**) sts up right front neck edge. Knit across 35 (**37-39-41**) sts from back st holder dec 3 sts evenly across. 90 (**98-100-108**) sts.

1st row: (WS). Knit.

Beg with a knit row, work 3 ins [8 cm] in stocking st ending with RS facing. Cast off. Sew left shoulder and neckband seam reversing seam for curl-back edge.

Place markers on front and back side edges 9½ (**10-10½-11**) ins [24 (**25.5-26.5-28**) cm] down from shoulder seams. Sew in sleeves between markers. Sew side and sleeve seams reversing seam for curl-back edges. Press seams.

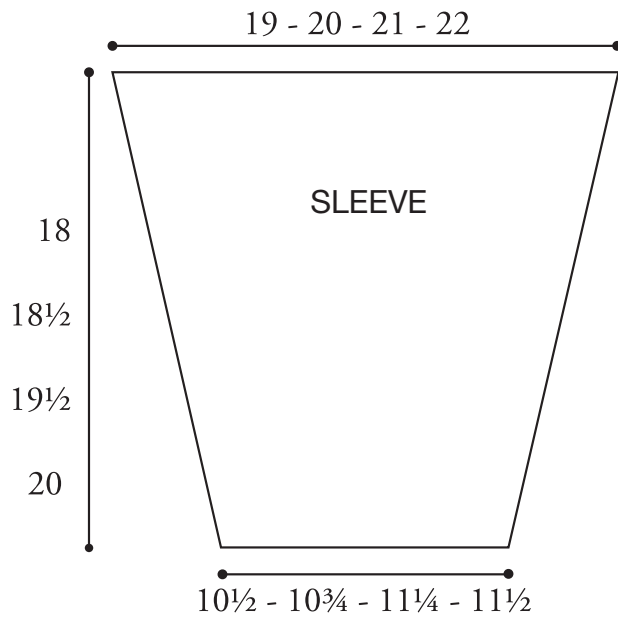
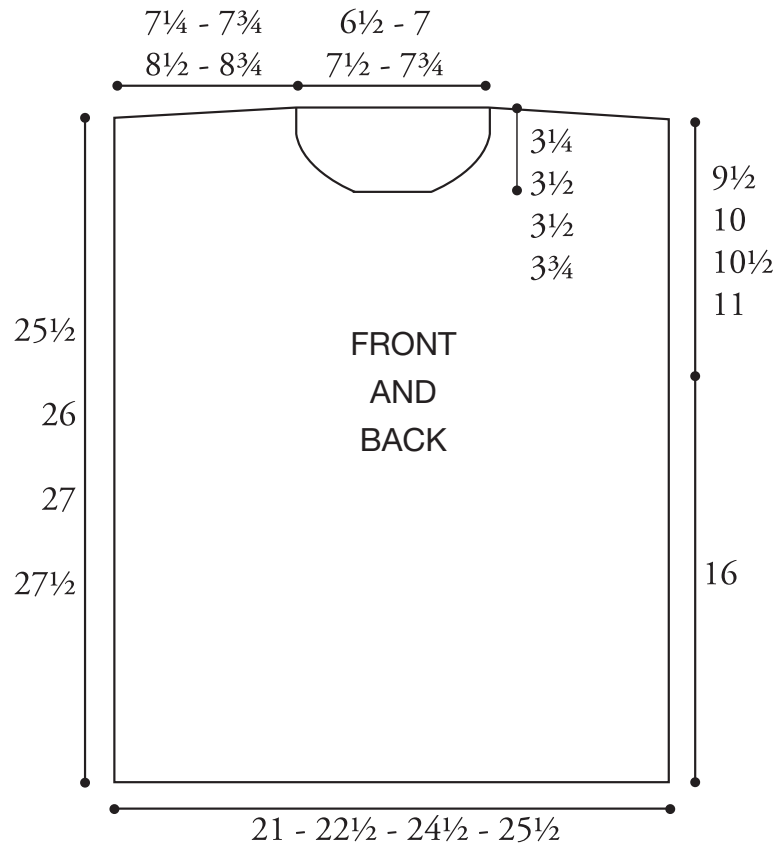


CHART I

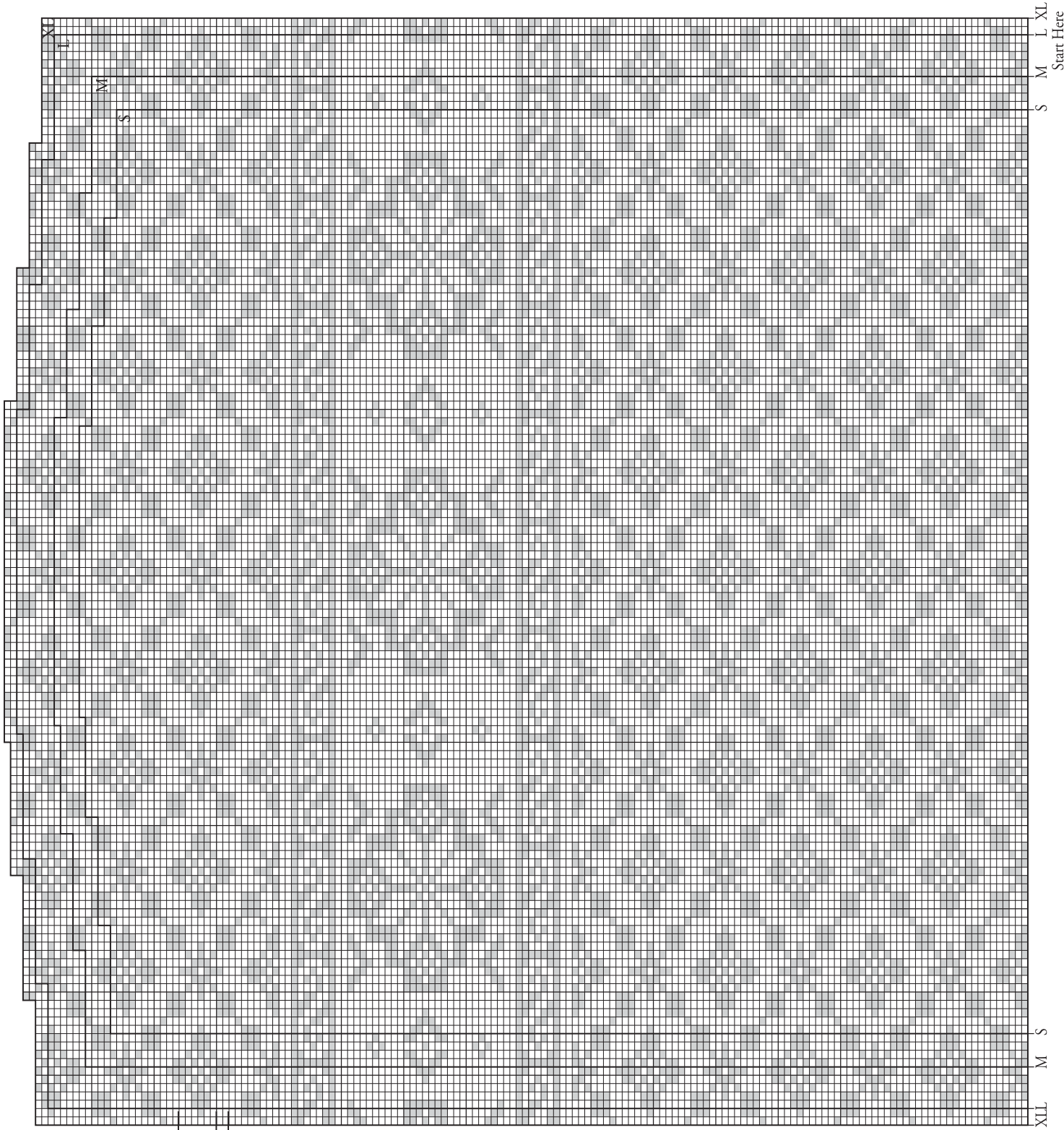
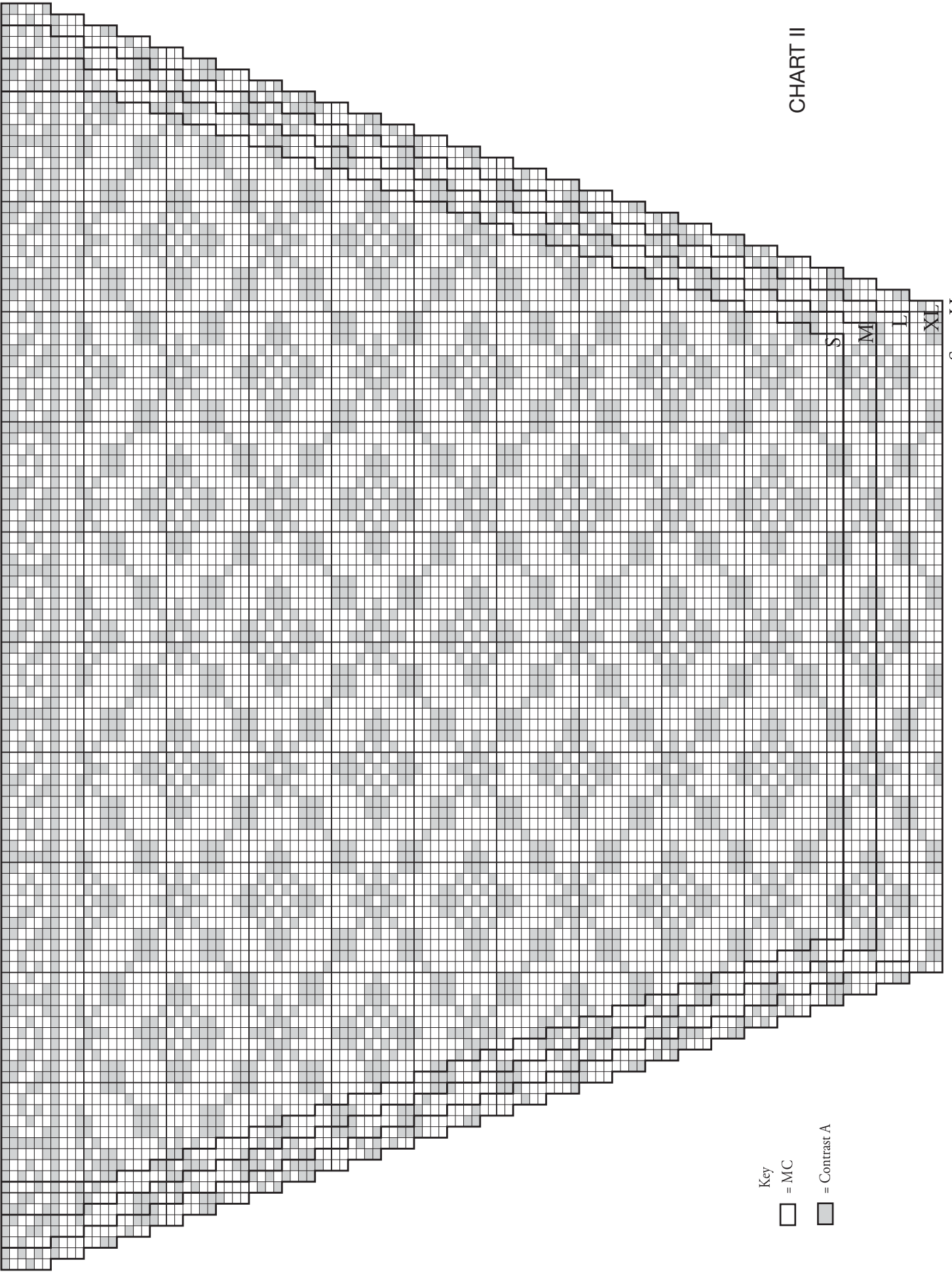


CHART II



Key
□ = MC
■ = Contrast A

S
M
L
XL

Start Here