

Patons® Classic Wool

Patons® DECOR



MOM'S SWEATER

SIZES

Bust measurement

Small 30-32 ins [76-81 cm]

Medium 34-36 ins [86-91 cm]

Large 38-40 ins [97-102cm]

Finished bust

Small 41½ ins [105.5 cm]

Medium 46½ ins [118 cm]

Large 52 ins [132 cm]

MATERIALS

Patons Classic Wool (100 g/3.5 oz)
or Patons Décor (100 g/3.5 oz)

Size	S	M	L	
Main Color (MC) (Navy)	5	5	6	balls
Contrast A (Aran)	1	1	1	ball
Contrast B (Grey)	1	1	1	ball
Contrast C (Green)	1	1	1	ball
Contrast D (Teal)	1	1	1	ball
Contrast E (Blue)	1	1	1	ball

Sizes 4 mm (U.S. 6) and 4.5 mm (U.S. 7) circular knitting needles 36 ins [90 cm] long. Set of four 4 mm (U.S. 6) and 4.5 mm (U.S. 7) double-pointed needles **or size needed to obtain tension.** 4 st holders.

TENSION

20 sts and 26 rows = 4 ins [10 cm] with larger needles in stocking st.

INSTRUCTIONS

The instructions are written for smallest size. If changes are necessary for larger sizes the instructions will be written thus ().

Note: When working from charts, carry yarn not in use loosely across WS of work but never over more than 5 sts. When it must pass over more than 5 sts, weave it over and under color in use on next st or at center point of sts it passes over. The colors are never twisted around one another.

BODY

With MC and smaller circular needle cast on 200 (**226-252**) sts. Join in rnd and placing a marker on first st, work 2½ ins [6 cm] in (K1. P1) ribbing inc 8 sts evenly across last rnd. 208 (**234-260**) sts in rnd.

Change to larger circular needle and knit in rnds until work from beg measures 13 (**14-15**) ins [33 (**35.5-38**) cm].



ABBREVIATIONS: www.patonsyarns.com/glossary

Work Chart I to end of chart reading rows from **right** to left.

Next rnd: With MC, K5. Slip these 5 sts and last 5 sts of previous rnd onto first st holder for armhole. 10 sts on st holder. K104 (**117-130**). Slip last 10 sts just worked onto second st holder for armhole. Knit to end of rnd. **Do not break yarn.**

SLEEVES

With MC and set of four smaller needles cast on 44 (**46-48**) sts. Divide these sts onto 3 needles. Join in rnd and placing a marker on first st, work 2½ ins [6 cm] in (K1. P1) ribbing inc 12 (**14-14**) sts evenly across last rnd. 56 (**60-62**) sts in rnd.

Change to set of four larger needles and knit in rnds inc 1 st beg and end of 5th and every following 4th rnd to 60 (**72-68**) sts, then every following 6th rnd to 78 (**88-88**) sts.

Knit even in rnds until sleeve from beg measures 15 (**16-17**) ins [38 (**40.5-43**) cm].

Work Chart II to end of chart reading rows from **right** to left.

With MC, knit 1 rnd even.

Next rnd: K5. Slip these 5 sts and last 5 sts of previous rnd onto a st holder. Break yarn leaving an end 12 ins [30 cm] long for grafting at underarm. Leave rem sts on a spare needle.

YOKE

With MC and larger circular needle *knit across 68 (**78-78**) sts of Sleeve. Knit across 94 (**107-120**) sts of Body. Rep from * once more. Mark last st as end of rnd. 324 (**370-396**) sts in rnd.

Sizes M and L only: Next round: With MC, *K (**11-9**). K2tog. Rep from * to last (**6-0**) sts. K (**6-0**). (**342-360**) sts in rnd.

All Sizes: Work Chart III to end of chart reading rows from **right** to left. 180 (**190-200**) sts in rnd.

Next rnd: With A, knit dec 0 (**10-8**) sts evenly around. 180 (**180-192**) sts in rnd.

Work Chart IV to end of chart reading rows from **right** to left.

120 (**120-128**) sts in rnd.

Next rnd: With MC, *K2. K2tog. Rep from * to last 8 (**0-8**) sts. (K2tog) 4 (**0-4**) times. 88 (**90-94**) sts in rnd.

Neckband: Change to set of four smaller double pointed needles and work 3¼ ins [8.5 cm] in (K1. P1) ribbing. Cast off loosely in ribbing. Fold neckband in half to WS and sew loosely in position. Graft sleeves at underarms.

Pin garment to measurements and cover with a damp cloth leaving to dry on garment.

CHART I

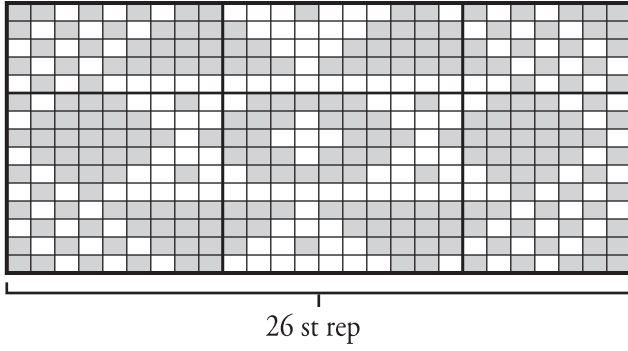


CHART III

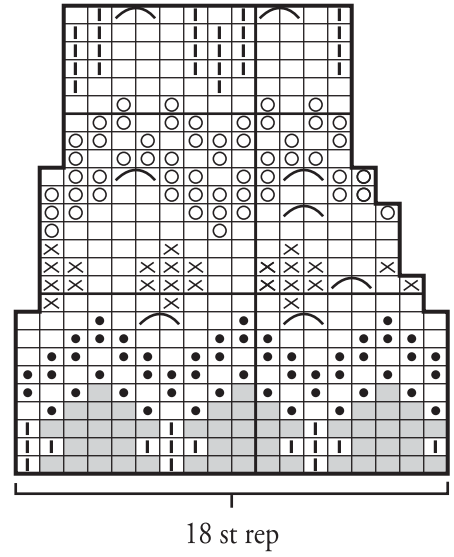


CHART II

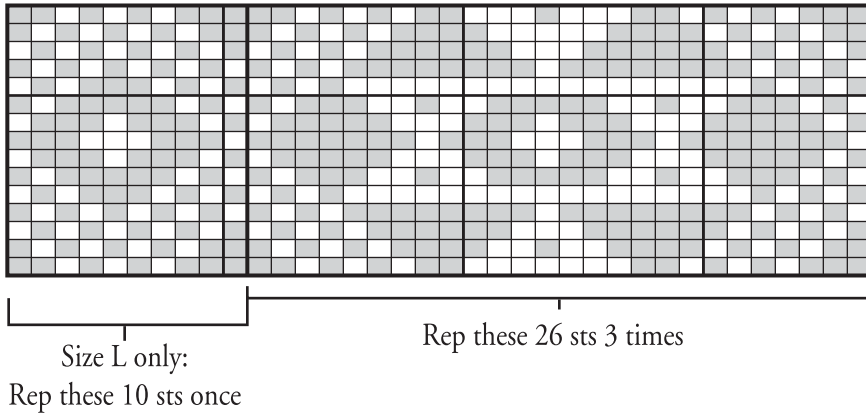
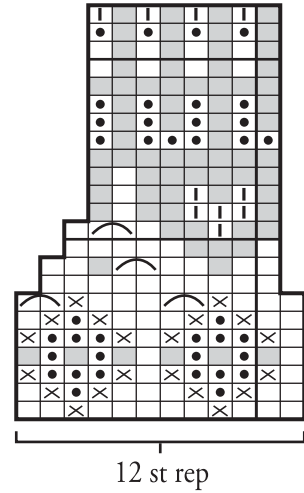


CHART IV



Key

□ = MC

■ = Contrast A

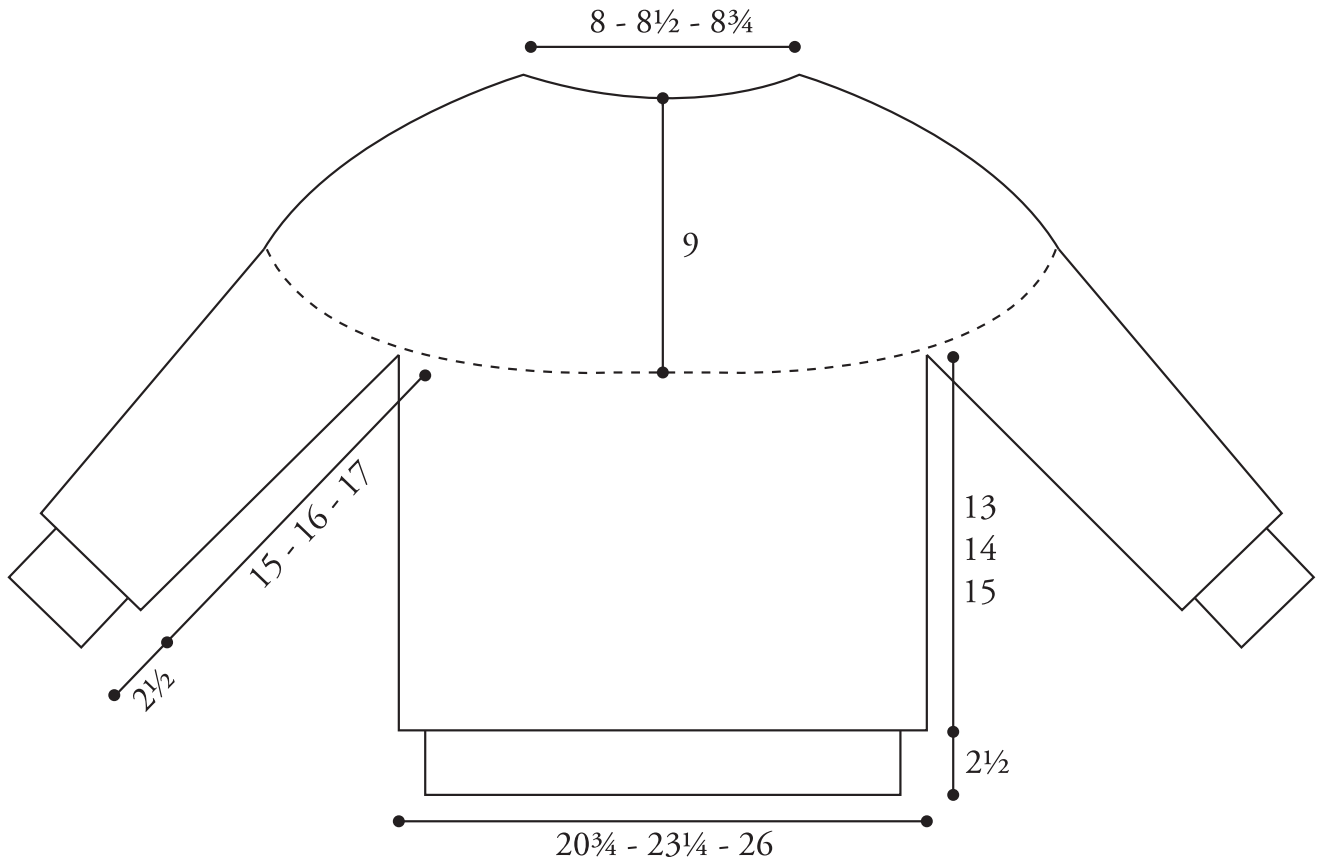
● = Contrast B

▮ = Contrast C

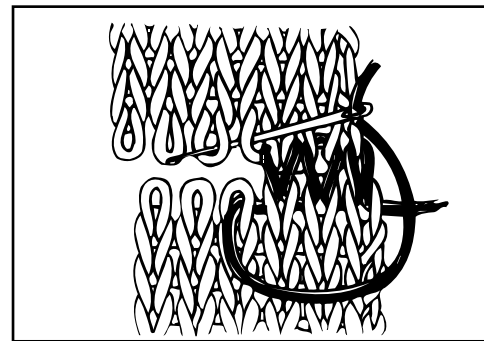
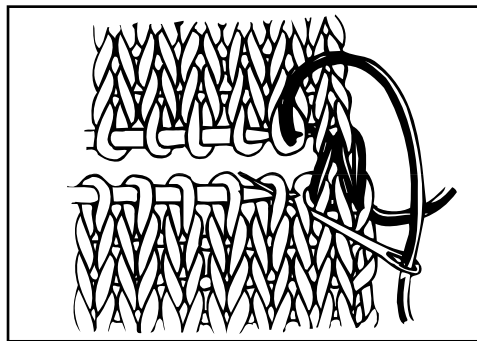
○ = Contrast D

⊗ = Contrast E

⌢ = K2tog



GRFTING DIAGRAM



Patons

... a part of your life.

P.O. Box 40, Listowel ON N4W 3H3