

Patons® Classic Wool

Patons® DECOR



SOFT AND PRETTY

SIZES

Bust measurement

Small	30-32 ins [76-81cm]
Medium	34-36 ins [86-91cm]
Large	38-40 ins [97-102cm]

Finished bust

Small	42 ins [107 cm]
Medium	45 ins [114.5cm]
Large	49 ins [124.5cm]

TENSION

21 sts and 24 rows = 4 ins [10 cm] with larger needles in fair isle pat

MATERIALS

Patons Classic Wool (100 g/3.5 oz)
or Patons Décor (100 g/3.5 oz)

Size	S	M	L	XL
Main color (MC) (Aran)	4	5	5	6
Contrast A (Blue)	2	2	2	3
Contrast B (Dk Beige)	1	1	2	2
Contrast C (Lt Beige)	1	1	1	1

Sizes 4 mm (U.S. 6) and 4.5 mm (U.S. 7) knitting needles **or size needed to obtain tension.** 2 st holders.

INSTRUCTIONS

The instructions are written for smallest size. If changes are necessary for larger sizes the instructions will be written thus ().

Note: When working from charts, carry yarn not in use loosely across WS of work but never over more than 5 sts. When it must pass over more than 5 sts, weave it over and under color in use on next st or at center point of sts it passes over. The colors are never twisted around one another.

BACK

**With MC and smaller needles cast on 103 (111-123) sts.

1st row: (RS). *K2. P2. Rep from * to last 3 sts. K2. P1.

2nd row: *K2. P2. Rep from * to last 3 sts. K2. P1.

Rep these 2 rows (seeded ribbing) for 2 ins [5 cm] ending on a 2nd row and inc 8 (8-6) sts evenly across last row. 111 (119-129) sts.**

Change to larger needles and work Chart I in stocking st to end of chart reading **knit** rows from **right** to left and **purl** rows from **left** to right. Leave rem 37 (37-39) sts on a st holder.

FRONT

Work from ** to ** as given for Back.



ABBREVIATIONS: www.patonsyarns.com/glossary

Patons®

... a part of your life.

P.O. Box 40, Listowel ON N4W 3H3

Change to larger needles and work Chart I in stocking st to row 96 of chart reading **knit** rows from **right** to left and **purl** rows from **left** to right.

Neck shaping: Next row: (RS). Work across 47 (51-56) sts from chart (neck edge). **Turn.** Leave rem sts on a spare needle. Keeping cont of chart, dec 1 st at neck edge on next 4 rows, then on following 6 (6-7) alt rows.

Work 1 (3-5) row(s) even from chart, ending with RS facing for next row.

Shoulder shaping: Cast off 12 (14-15) sts beg next and following alt row. Work 1 row even. Cast off rem 13 (13-15) sts.

With RS of work facing slip next 17 sts from spare needle onto a st holder. Join yarn to rem sts and work chart to end of row. Keeping cont of chart, dec 1 st at neck edge on next 4 rows, then on following 6 (6-7) alt rows.

Work 2 (4-6) rows even from chart, ending with **WS** facing for next row.

Shoulder shaping: Cast off 12 (14-15) sts beg next and following alt row. Work 1 row even. Cast off rem 13 (13-15) sts.

SLEEVES

With MC and smaller needles cast on 47 (47-51) sts. Work 2 ins [5 cm] in seeded ribbing as given for Back ending on a 2nd row and inc 18 (20-18) sts evenly across last row. 65 (67-69) sts.

Change to larger needles and work Chart II in stocking st to end of chart reading **knit** rows from **right** to left and **purl** rows from **left** to right noting side incs on 5th and following 4th rows until there are 87 (97-105) sts, then every following 6th row until there are 99 (105-111) sts.

FINISHING

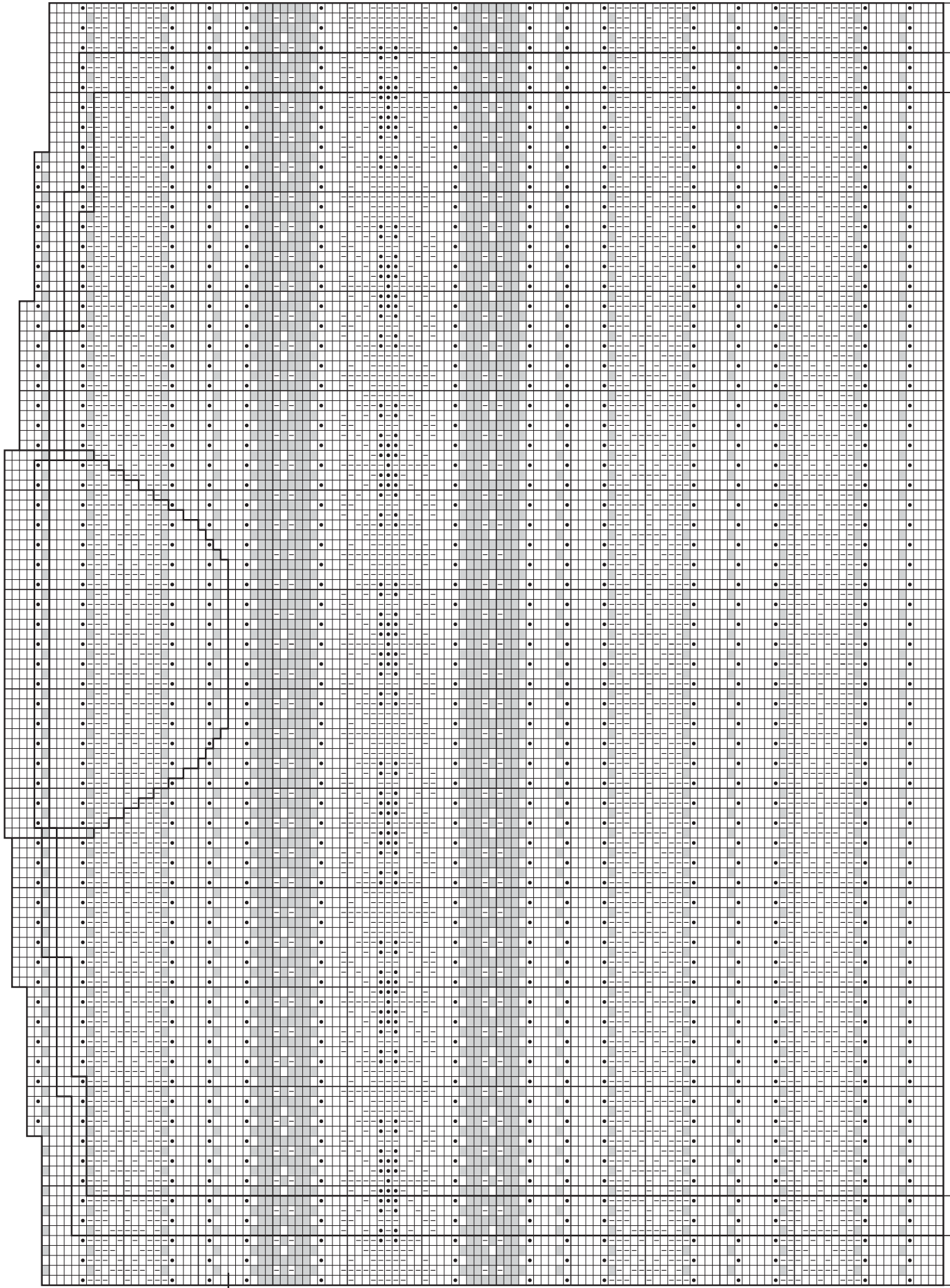
Pin garment pieces to measurements and press lightly with a damp cloth leaving to dry on garment pieces.

Neckband: Sew right shoulder seam. With RS of work facing, MC and smaller needles, pick up and knit 19 (21-22) sts down left front neck edge. Knit across 17 sts from front st holder. Pick up and knit 19 (21-22) sts up right front neck edge. Knit across 37 (37-39) sts from back st holder dec 1 st at center. 91 (95-99) sts.

Work 3 ins [8 cm] in seeded rib as given for Back ending with RS facing for next row. Cast off in pat. Sew left shoulder and neckband seam.

Place markers on front and back side edges 9½ (10-10½) ins [24 (25.5-26.5) cm] down from shoulder seams. Sew in sleeves between markers. Sew side and sleeve seams. Press seams.

CHART I



Row 96

L M S

S M L
Start Here

CHART II

