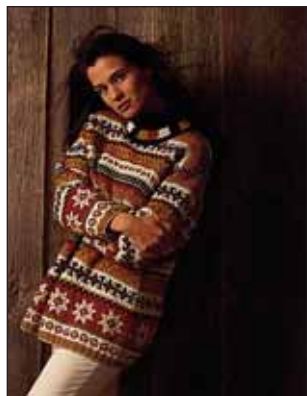


Patons
Classic Wool

Patons
DECOR



FABULOUS FAIR ISLE

SIZES

Bust measurement

Small 30-32 ins [76-81 cm]

Medium 34-36 ins [86-91 cm]

Large 38-40 ins [97-102 cm]

Finished bust

Small 43 ins [109 cm]

Medium 46 ins [117 cm]

Large 49 ins [124.5 cm]

TENSION

21 sts and 24 rows = 4 ins [10 cm]
with larger needles in fair isle pat.

MATERIALS

Patons Classic Wool (100 g/3.5 oz)
or **Patons Décor** (100 g/3.5 oz)

Size	S	M	L	
Main color (MC) (Red)	4	4	5	balls
Contrast A (Aran)	3	3	4	balls
Contrast B (Gold)	3	3	3	balls
Contrast C (Teal)	3	3	4	balls

Sizes 4 mm (U.S. 6) and 4.5 mm (U.S. 7) knitting needles **or size needed to obtain tension**. 2 st holders.

INSTRUCTIONS

Note: When working from charts, carry yarn not in use loosely across WS of work but never over more than 5 sts. When it must pass over more than 5 sts, weave it over and under color in use on next st or at center point of sts it passes over. The colors are never twisted around one another.

BACK

**Proceed as follows using the 2 needle cast on method.

With A and smaller needles cast on 1 st. *With B, cast on 1 st. With A, cast on 1 st. Rep from * 61 (65-67) times more. With B, cast on 1 st. 126 (134-138) sts.

1st row: (RS). With B, knit.

2nd row: P2. *K2. P2. Rep from * to end of row.

3rd row: K2. *P2. K2. Rep from * to end of row.

Rep last 2 rows (K2. P2) ribbing once more, then 2nd row once inc 1 (1-3) sts evenly across last row. 127 (135-141) sts.

Change to larger needles and work Chart I in stocking st to end of chart reading **knit** rows from **right** to left and **purl** rows from **left** to right noting side decs worked on 19th and following 10th rows to 113 (121-127) sts. Rows 37 to 82 of Chart I form fair isle pat.

Keeping cont of fair isle pat, work a further 12 rows even.

Shape armholes: Cast off 9 (11-11) sts beg next 2 rows. 95 (99-105) sts.**

Work 52 (56-60) rows even in fair isle pat, ending with RS facing for next row.

Shoulder shaping: Cast off 10 (10-11) sts beg next 4 rows, then 9 (11-11) sts beg following 2 rows. Leave rem 37 (37-39) sts on a st holder.

FRONT

Work from ** to ** as given for Back.



ABBREVIATIONS: www.patonsyarns.com/glossary

Patons

... a part of your life.

P.O. Box 40, Listowel ON N4W 3H3

Work 34 (36-38) rows even in fair isle pat, ending with RS facing for next row.

Neck shaping: Next row: Pat across 39 (41-44) sts (neck edge).

Turn. Leave rem sts on a spare needle.

Keeping cont of fair isle pat, dec 1 st at neck edge on next 4 rows, then on following 6 (6-7) alt rows. 29 (31-33) sts.

Work 1 (3-3) row(s) even in fair isle pat, ending with RS facing for next row.

Shoulder shaping: Cast off 10 (10-11) sts beg next and following alt row. Work 1 row even. Cast off rem 9 (11-11) sts.

With RS of work facing slip next 17 sts from spare needle onto a st holder. Join yarn to rem sts and pat to end of row.

Keeping cont of fair isle pat, dec 1 st at neck edge on next 4 rows, then on following 6 (6-7) alt rows. 29 (31-33) sts.

Work 2 (4-4) rows even in fair isle pat, ending with **WS** facing for next row.

Shoulder shaping: Cast off 10 (10-11) sts beg next and following alt row. Work 1 row even. Cast off rem 9 (11-11) sts.

SLEEVES

Proceed as follows using the 2 needle cast on method:

With A and smaller needles cast on 1 st. *With B, cast on 1 st. With A, cast on 1 st. Rep from * 19 (21-23) times more. With B, cast on 1 st. 42 (46-50) sts.

1st row: (RS). With B, knit.

2nd row: P2. *K2. P2. Rep from * to end of row.

3rd row: K2. *P2. K2. Rep from * to end of row.

Rep last 2 rows (K2. P2) ribbing once more, then 2nd row once inc 17 (15-13) sts evenly across last row. 59 (61-63) sts.

Change to larger needles and work Chart II in stocking st to end of chart reading **knit** rows from **right** to left and **purl** rows from **left** to right noting side incs worked on 5th and following 4th rows to 101 (105-109) sts.

Place markers on side edges of Sleeves 10 (12-12) rows down from cast off edge.

FINISHING

Pin garment pieces to measurements and cover with a damp cloth leaving to dry on garment.

Collar: Sew right shoulder seam. With RS of work facing, C and smaller needles, pick up and knit

22 (22-23) sts down left front neck edge. Knit across 17 sts from front st holder. Pick up and knit 22 (22-23) sts up right front neck edge. Knit across 37 (37-39) sts from back st holder. 98 (98-102) sts.

Beg and ending on a 2nd row, work 3½ ins [9 cm] in (K2. P2) ribbing as given for Back. Place a marker at end of last row.

Change to larger needles and work a further 3½ ins [9 cm] in (K2. P2) ribbing ending with RS facing. Cast off in ribbing.

Collar Edging: With MC and larger needles cast on 6 sts.

Knit 10 rows (garter st).

With B, knit 10 rows.

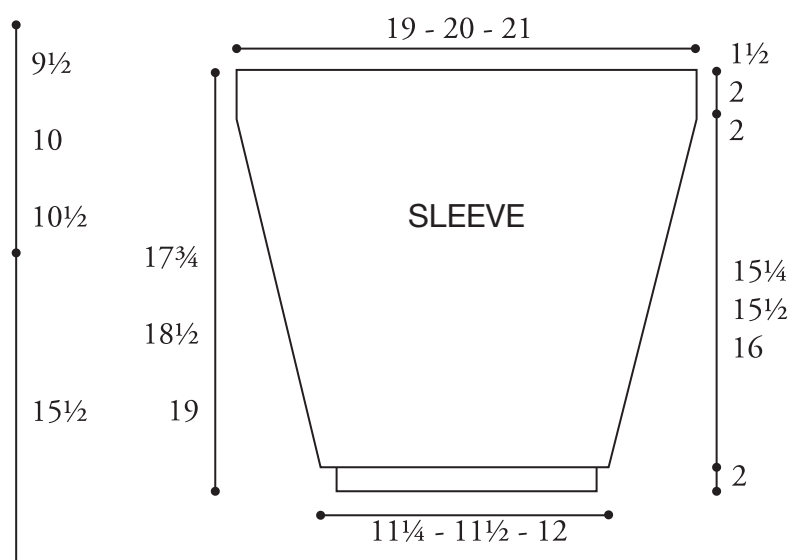
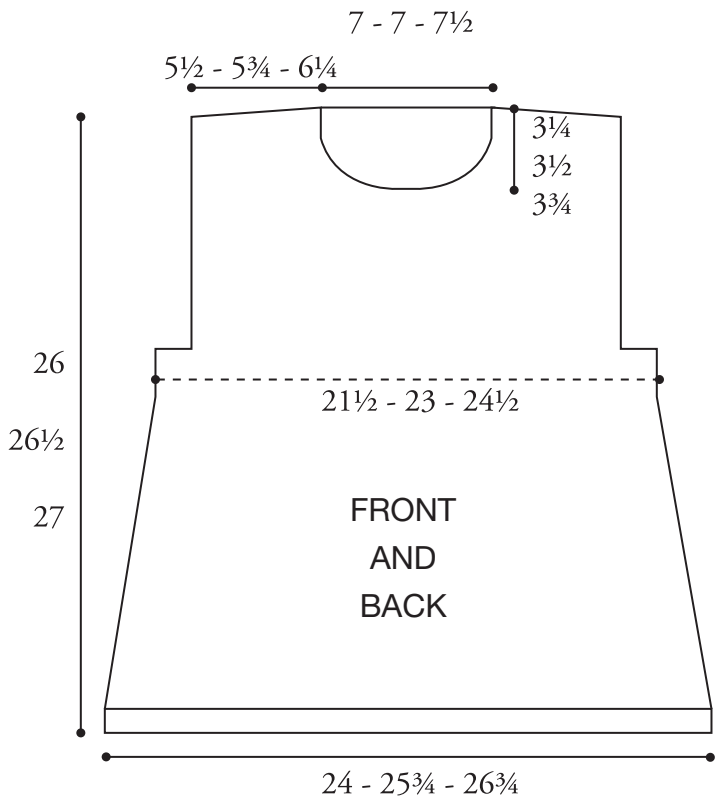
With C, knit 10 rows.

With A, knit 10 rows.

Last 40 rows form stripe pat.

Cont in stripe pat until edging (when slightly stretched) measures length to fit around outer edge of Collar. Cast off. Sew edging to outer edge of Collar. Sew left shoulder and collar seam reversing seam at marker for Collar turnback.

Sew in sleeves placing rows above markers along cast off sts of armholes to form a square armhole. Sew side and sleeve seams.



2 NEEDLE CAST ON METHOD

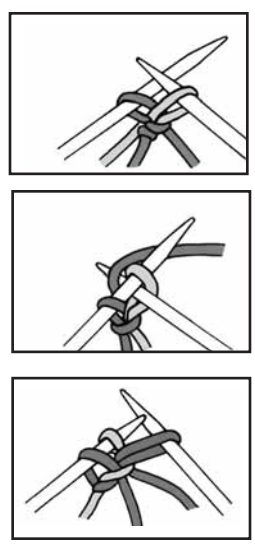
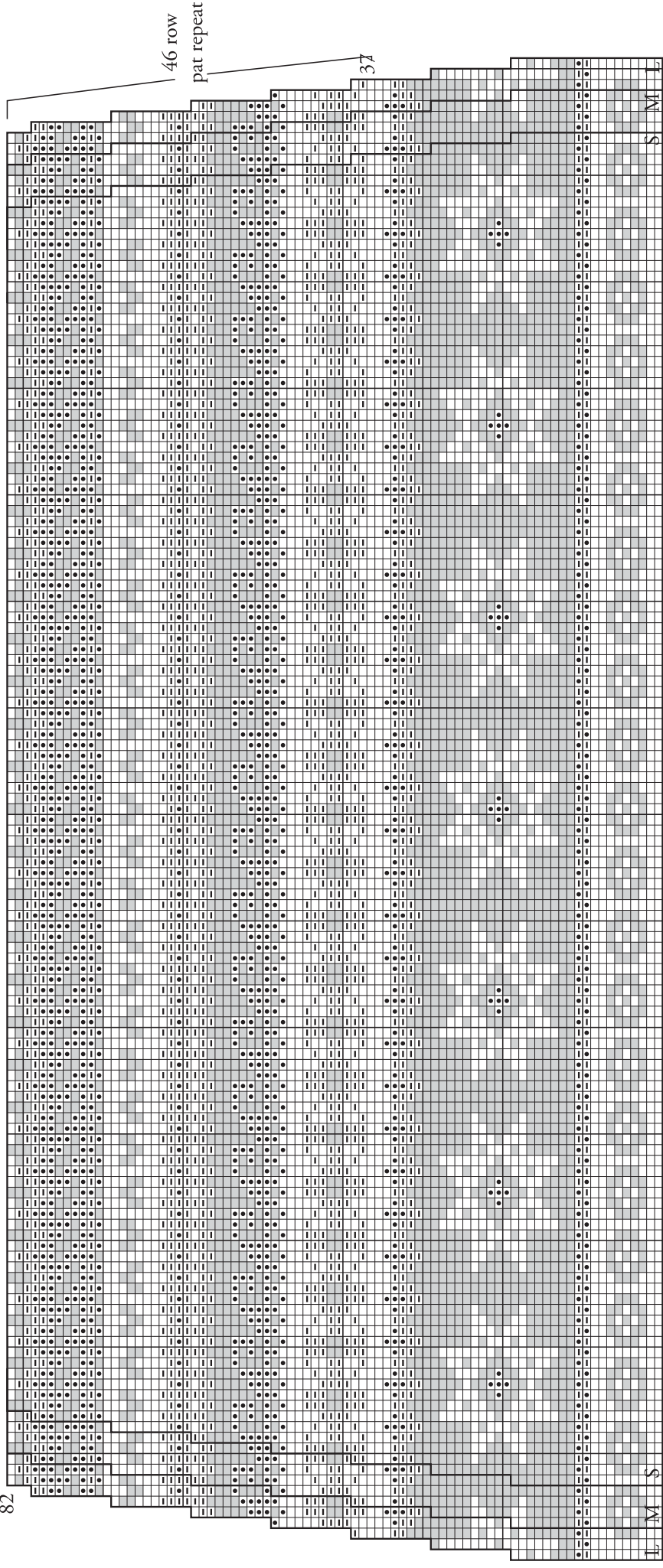
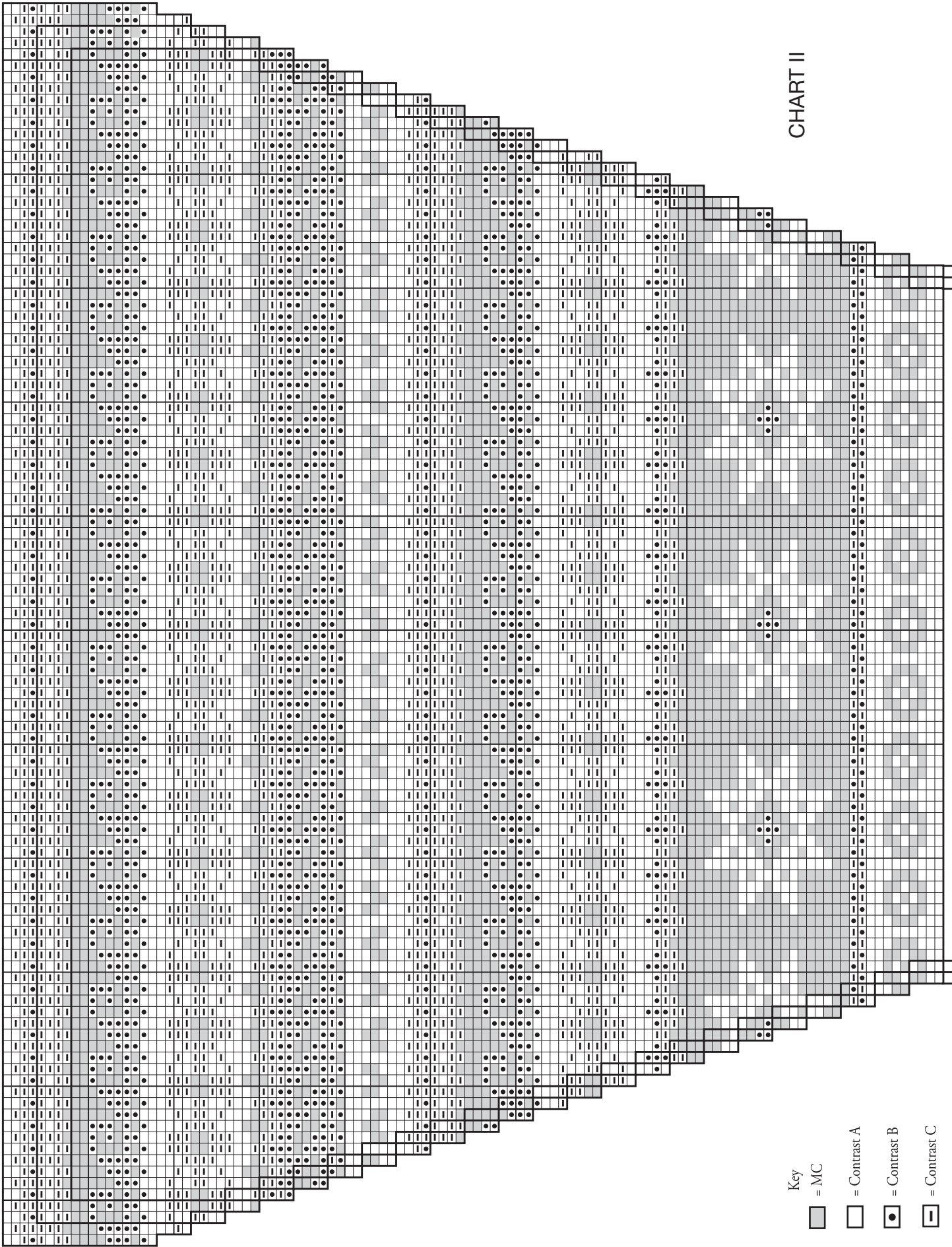


CHART I

82



- Key
- = MC
 - = Contrast A
 - = Contrast B
 - ▭ = Contrast C



- Key
- = MC
 - = Contrast A
 - = Contrast B
 - = Contrast C