

**Patons®**  
*Classic Wool*

**Patons®**  
**DECOR**



## LADIES CABLE & SNOWFLAKE

### SIZES

#### Bust measurement

Small	30-32 ins	[76-81 cm]
Medium	34-36 ins	[86-91 cm]
Large	38-40 ins	[97-102cm]

#### Finished bust

Small	38 ins	[96.5 cm]
Medium	41 ins	[104 cm]
Large	44 ins	[112 cm]

### MATERIALS

Patons Classic Wool (100 g/3.5 oz)  
or Patons Décor (100 g/3.5 oz)

Size    S       M       L

**Main Color (MC)** (Purple)

7       7       8    balls

**Contrast A** (Gold)

1       1       1    ball

**Contrast B** (Red)

1       1       2    ball(s)

**Contrast C** (Green)

1       1       1    ball

**Contrast D** (Blue)

1       1       1    ball

Sizes 4 mm (U.S. 6) and 4.5 mm (U.S. 7) knitting needles **or size needed to obtain tension**. 4 st holders. Cable needle.

### TENSION

20 sts and 26 rows = 4 ins [10 cm] with larger needles in stocking st.

### ABBREVIATION

**C4F** = slip next 2 sts onto a cable needle and leave at front of work. K2, then K2 from cable needle.

### INSTRUCTIONS

*The instructions are written for smallest size. If changes are necessary for larger sizes the instructions will be written thus ( ).*

### BACK

\*\*With MC and larger needles, cast on 124 (134-142) sts.

**1st row:** (RS). P0 (2-0). K4. \*P2. K4. Rep from \* to last 0 (2-0) sts. P0 (2-0).

**2nd row:** K0 (2-0). P4. \*K2. P4. Rep from \* to last 0 (2-0) sts. K0 (2-0).

**3rd to 6th rows:** As 1st and 2nd rows twice.

**7th row:** P0 (2-0). K4. \*P2. C4F. P2. K4. Rep from \* to last 0 (8-6) sts. P0 (2-2). (C4F) 0 (1-1) time. P0 (2-0).

**8th row:** As 2nd row.

These 1st to 8th rows form cable pat.

Cont in pat, until work from beg measures 11½ ins [29 cm], ending with RS facing for next row and dec 27 (29-29) sts evenly across last row. 97 (105-113) sts.

**Shape raglans:** Cast off 3 sts beg next 2 rows. 91 (99-107) sts.

Work Chart I in stocking st, reading **knit** rows from **right** to left and **purl** rows from **left** to right.\*\*

Cont working in Chart, dec 1 st each end of needle on next and every alt row to 35 (37-39) sts ending with RS facing for next row. Slip 35 (37-39) sts on a st holder.

### FRONT

Work from \*\* to \*\* as given for Back.



Cont working in Chart I, dec 1 st each end of needle on next and every alt row until row 32 (36-40) of Chart is complete.

**Next row:** (RS). Sl1. K1. pss0. Work 18 (19-20) sts (neck edge).

**Turn.** Leave rem sts on a spare needle.

**Next row:** P2tog. Work in chart to end of row.

Cont working in Chart, dec 1 st at neck edge on next 3 rows then every alt row twice **at same time** cont dec 1 st at raglan edge every alt row from previous dec.

**Next row:** Sl1. K1. pss0. Fasten off.

With RS of work facing slip next 20 (22-24) sts from spare needle onto a st holder. Join yarn to rem sts and work in chart to last 2 sts. K2tog.

**Next row:** Work in chart to last 2 sts. P2togtbl.

Cont working in Chart, dec 1 st at neck edge on next 3 rows, then every alt row twice **at same time** cont dec 1 st at raglan edge every alt row from previous dec.

**Next row:** (WS). P2tog. Fasten off.

## SLEEVES

With MC and larger needles, cast on 64 sts.

Work in Cable Pat as given for Back for size S, inc 1 st each end of needle on 3rd and every 2nd row to 80 (82-86) sts, then every following 4th row until there are 118 (122-126) sts, taking inc sts into pat.

Cont even in pat until Sleeve from beg measures 19 (20-21) ins [48 (51-53) cm] dec 27 (25-25) sts evenly across last row and ending with RS facing for next row. 91 (97-101) sts.

**Shape raglans:** Cast off 3 sts beg next 2 rows. 85 (91-95) sts.

Work Chart II in stocking st, reading **knit** rows from **right** to left and **purl** rows from **left** to right.

Cont working in Chart, dec 1 st each end of needle on next and every alt row 18 (22-27) times, then every row to 7 (9-11) sts ending with RS facing for next row. Slip 7 (9-11) sts on a st holder.

## FINISHING

Pin garment pieces to measurements. Cover with a damp cloth leaving to dry.

**Neckband:** Sew in sleeves to Front and Back leaving left back raglan open. With RS of work facing, MC and smaller needles, knit across 7 (9-11) sts from Left Sleeve st holder. Pick up and knit 15 (17-19) sts down left front neck edge. Knit across 20 (22-24) sts

from front st holder. Pick up and knit 15 (17-19) sts up right front neck edge. Knit across 7 (9-11) sts from Right Sleeve st holder. Knit across 35 (37-39) sts from back st holder, dec 1 st at center. 98 (110-122) sts.

Proceed as follows:

**1st row:** (WS). K2. \*P4. K2. Rep from \* to end of row.

**2nd row:** P2.\* K4. P2. Rep from \* to end of row.

**3rd to 6th rows:** As 1st and 2nd rows twice.

**7th row:** As 1st row.

**8th row:** P2. \*C4F. P2. K4. P2. Rep from \* to end of row.

**9th row:** As 2nd row.

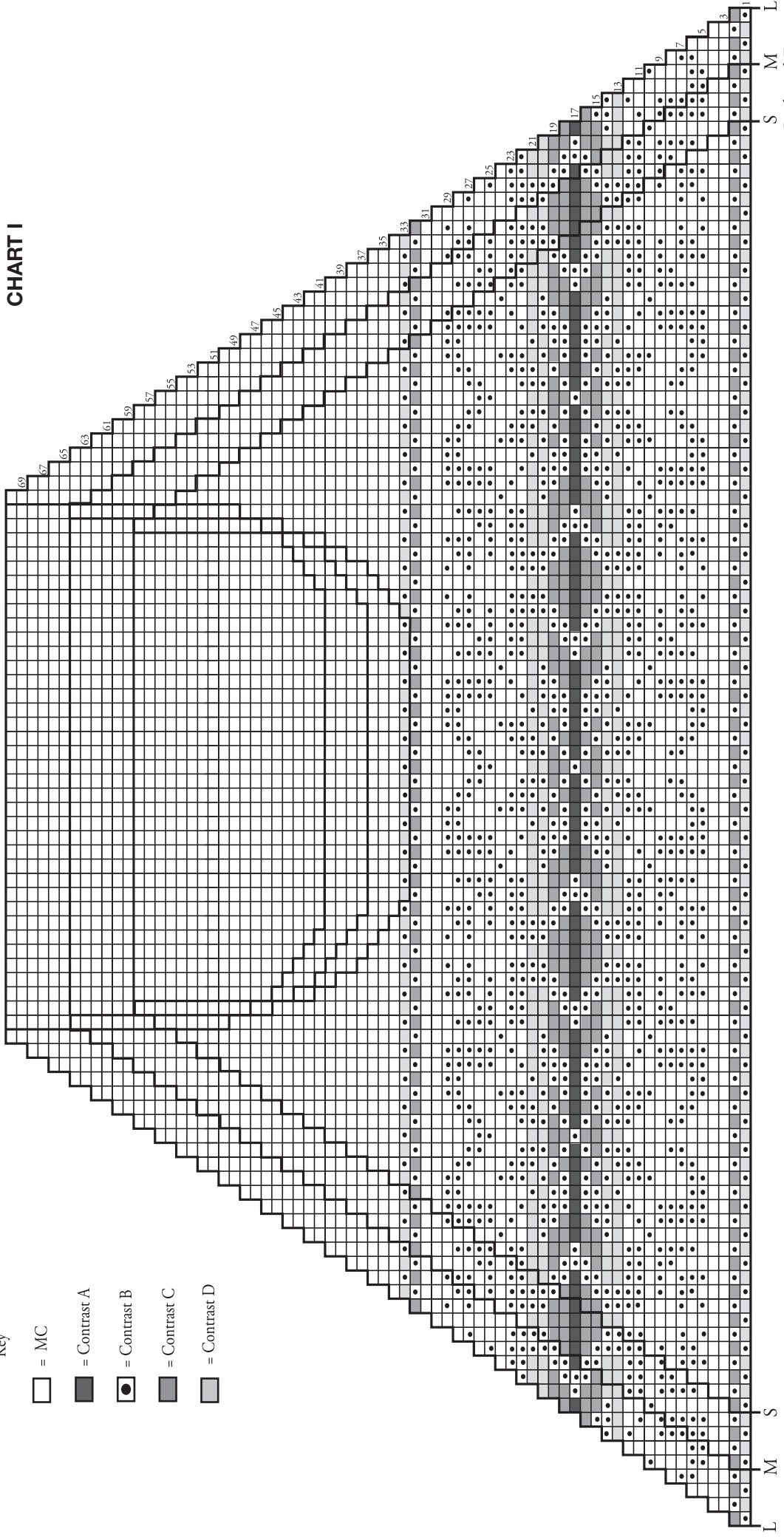
Rep last 8 rows for 4½ ins [12.5 cm] ending with RS facing for next row. Cast off in pat.

Sew left back raglan and collar seam.

# CHART I

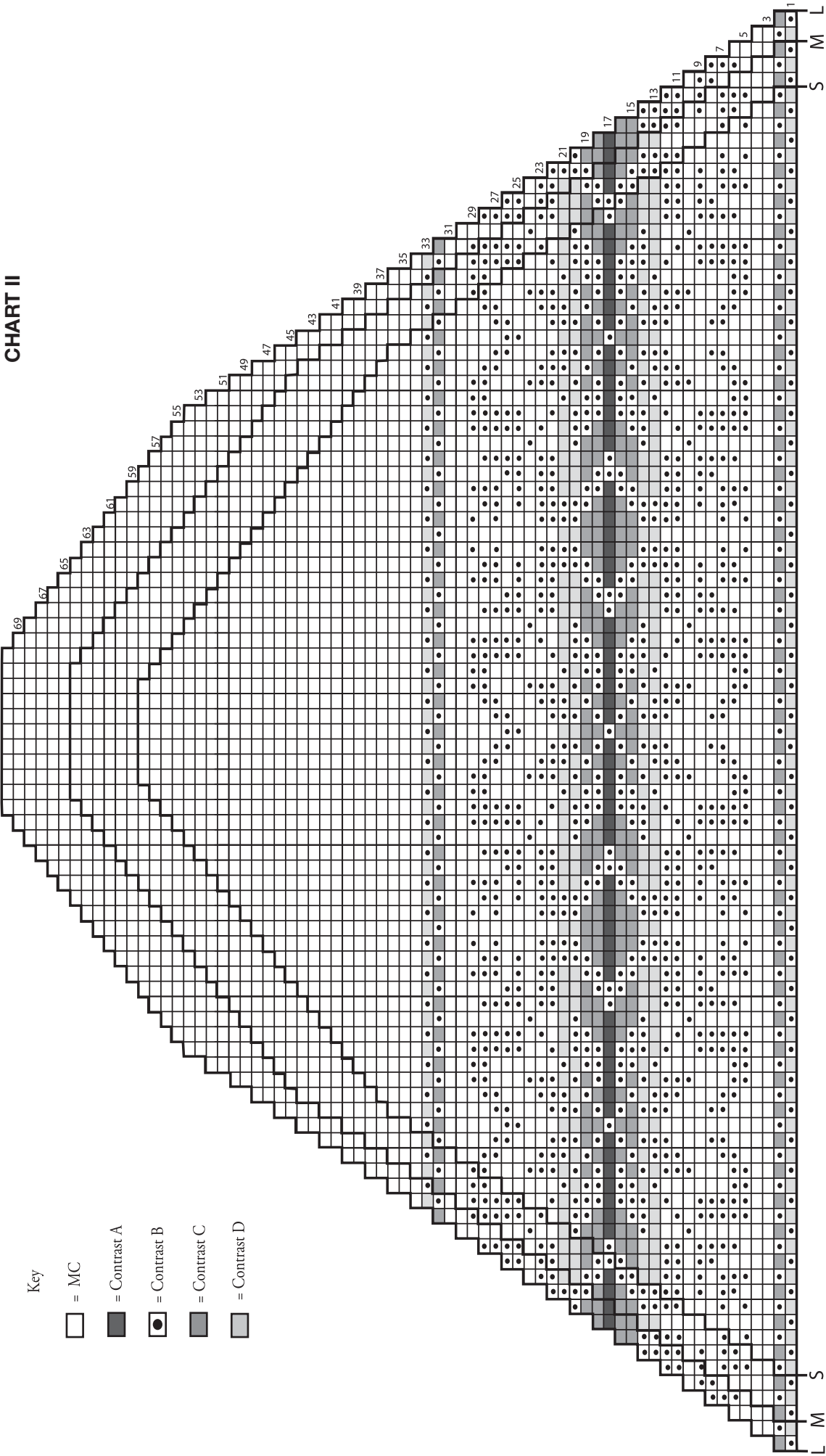
Key

- = MC
- = Contrast A
- = Contrast B
- = Contrast C
- = Contrast D



L M S  
S M L  
Back and Front: Start Here

# CHART II

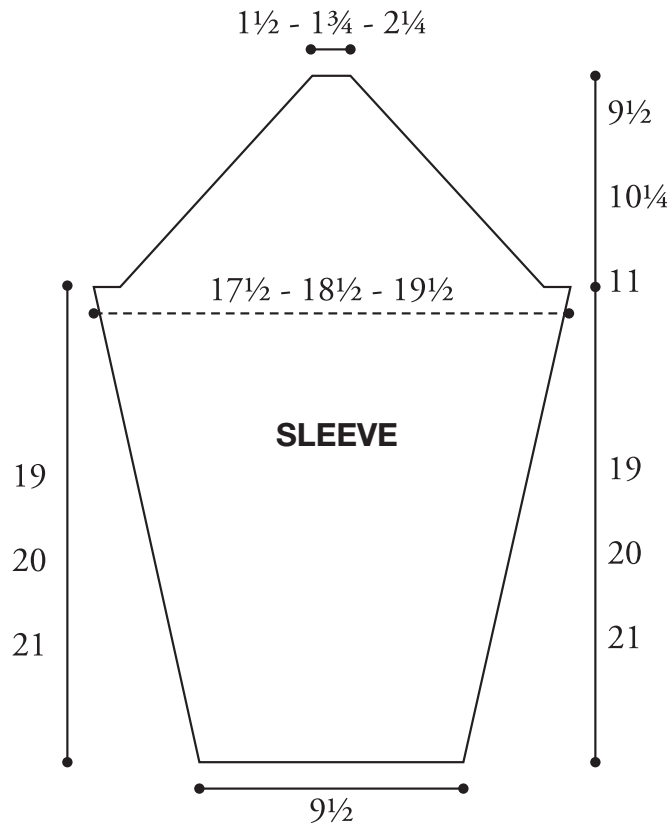
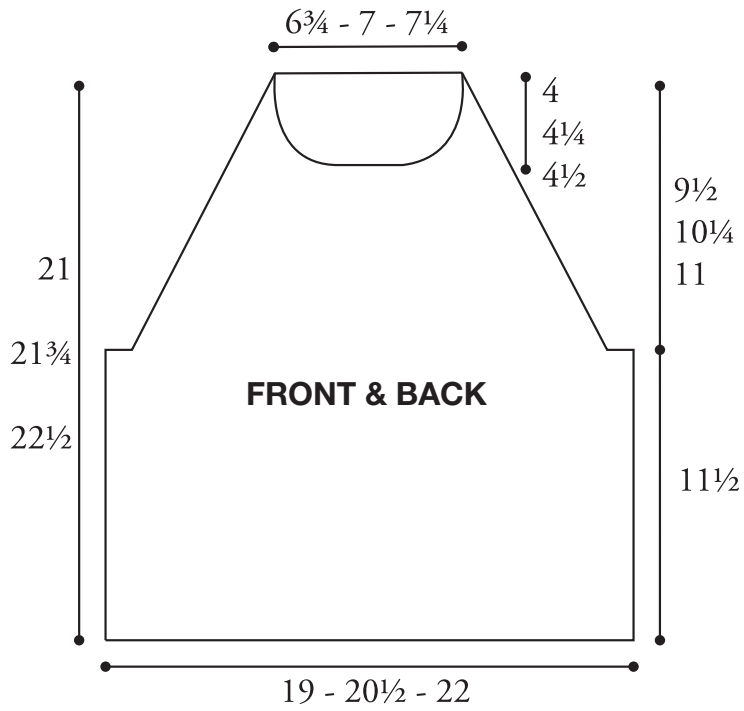


Key

- = MC
- = Contrast A
- = Contrast B
- ▒ = Contrast C
- ▓ = Contrast D

Start Here

L M S



 **Patons**<sup>®</sup>

*... a part of your life.*

P.O. Box 40, Listowel ON N4W 3H3