



SIZES

To fit bust measurement

Extra-Small/Small
28-34" [71-86.5 cm]

Medium
36-38" [91.5-96.5 cm]

Large
40-42" [101.5-106.5 cm]

Extra-Large
44-46" [112-117 cm]

2/3 Extra-Large
48-54" [122-137 cm]

4/5 Extra-Large
56-62" [142-157.5 cm]

Finished bust

Extra-Small/Small 36" [91.5 cm]

Medium 40" [101.5 cm]

Large 44½" [113 cm]

Extra-Large 50" [127 cm]

2/3 Extra-Large 56" [142 cm]

4/5 Extra-Large 65" [165 cm]

GAUGE

20 sts and 26 rows = 4" [10 cm]
with large needles in stocking st.

INSTRUCTIONS

The instructions are written for smallest size. If changes are necessary for larger sizes the instructions will be written thus (). Numbers for each size are shown in the same color throughout the pattern. When only one number is given in black, it applies to all sizes.

Panel Pat A (worked over 3 sts)
(see page 3).

1st row: (RS). K3.

2nd and alt rows: P3.

3rd row: C3F.

5th row: K3.

6th row: As 2nd row.

These 6 rows form Panel Pat A.

Panel Pat B (worked over 3 sts)
(see page 3).

1st row: (RS). K3.

2nd and alt rows: P3.

3rd row: C3B.

5th row: K3.

6th row: As 2nd row.

These 6 rows form Panel Pat B.

Panel Pat C (worked over 20 sts)
(see page 3).

1st row: (RS). (P2. K4) 3 times. P2.

MATERIALS

Patons® Decor™ (3.5 oz/100 g; 205 yds/187 m)

Patons® Classic Wool™ (3.5 oz/100 g; 210 yds/192 m)

Patons® Canadiana™ (3.5 oz/100 g; 205 yds/187 m)

SIZES	XS/S	M	L	XL	2/3XL	4/5XL	
Grey Heather (87672)	5	6	6	7	8	8	balls

Sizes U.S. 6 (4mm) and U.S. 7 (4.5 mm) knitting needles. Sizes U.S. 6 (4 mm) and U.S. 7 (4.5 mm) circular knitting needles 36" [90 cm] long. Set of four sizes U.S. 6 (4 mm) and U.S. 7 (4.5 mm) double-pointed knitting needles **or size needed to obtain gauge**. Cable needle. 3 buttons. 2 stitch holders.



2nd and alt rows: Knit all knit stitches and purl all purl stitches as they appear.

3rd row: P2. K4. T4B. T4F. K4. P2.

5th row: P2. K2. C4B. P4. C4F. K2. P2.

7th row: P2. C4B. T4F. T4B. C4F. P2.

9th row: P2. K4. P2. C4F. P2. K4. P2.

11th and 13th rows: As 1st row.

15th row: As 9th row.

17th row: As 1st row.

18th row: As 2nd row.

These 18 rows form Panel Pat C.

Cable Yoke

With pair of larger needles, cast on 28 sts.

1st row: (RS). P1. Work 1st row of Panel Pat A.

Work 1st row of Panel Pat C. Work 1st row of Panel Pat B. P1.

2nd row: K1. Work 2nd row of Panel Pat B.

Work 2nd row of Panel Pat C. Work 2nd row of Panel Pat A. K1.

3rd row: P1. Work 3rd row of Panel Pat A. Work 3rd row of Panel Pat C. Work 3rd row of Panel Pat B. P1.

4th row: K1. Work 4th row of Panel Pat B. Work 4th row of Panel Pat C.

Work 4th row of Panel Pat A. K1. Panel Pats A, B and C are now in position.

Cont in pat until work from beg measures approx **43(43-45-45-47-47)"** [**109 (109-114.5-114.5-119.5-119.5)** cm], ending with 16th row of Panel Pat C. Cast off.

Bottom Yoke

Beg at one end of Cable Yoke, with larger circular needle pick up and knit **216(220-228-236-252-260)** sts evenly across bottom edge of Cable Yoke.

2nd row: (WS). K1. (P6. K7) twice. P6. K **2(3-4-5-7-8)**. Place marker on last st. K **40(40-42-44-48-50)**. Place marker on last st. K **4(5-6-7-9-10)**. (P6. K7) 4 times. P6. K **5(6-7-8-10-11)**.

Place marker on last st. K**40(40-42-44-48-50)**.

Place marker on last st. K **1(2-3-4-6-7)**. (P6. K7) twice. P6. K1.

3rd row: P1. (Work 1st row of Panel Pat A.

Work 1st row of Panel Pat B. P7) twice. Work 1st row of Panel Pat A. Work 1st row of Panel Pat B. P1 **1(2-3-4-6-7)**. M1P. P1. M1P. P **39(39-41-43-47-49)**. M1P. P1. M1P. P **4(5-6-7-9-10)**. (Work 1st row of Panel Pat A. Work 1st row of Panel Pat B. P7) 4 times. Work 1st row of Panel Pat A.

Work 1st row of Panel Pat B. P**4(5-6-7-9-10)**. M1P. P1. M1P. P**39(39-41-43-47-49)**. M1P. P1. M1P. P**1(2-3-4-6-7)**. (Work 1st row of Panel Pat A. Work 1st row of Panel Pat B. P7) twice. Work 1st row of Panel Pat A. Work 1st row of Panel Pat B. P1.**224(228-236-244-260-268)** sts.

4th row: K1. (Work 2nd row of Panel Pat A.

Work 2nd row of Panel Pat B. K7) twice. Work 2nd row of Panel Pat A. Work 2nd row of Panel Pat B. K **50(52-56-60-68-72)**. (Work 2nd row of Panel Pat A. Work 2nd row of Panel Pat B. K7) 4 times. Work 2nd row of Panel Pat A. Work 2nd row of Panel Pat B. K**50(52-56-60-68-72)**.

(Work 2nd row of Panel Pat A. Work 2nd row of Panel Pat B. K7) twice. Work 2nd row of Panel Pat A. Work 2nd row of Panel Pat B. K1. Panel Pats A and B are now in position.

Size XS/S only: 5th row: [(Pat to next marked st. M1P. P1 (marked st). M1P) 4 times. Pat to end of row. **6th row:** Work even in pat. Rep last 2 rows twice more. 248 sts.

All sizes: Next row: (RS). *(Pat to next marked st. M1P. P1 (marked st). Pat to next marked st. P1 (marked st). M1P. Rep from * once more. Pat to end of row.

Next row: (Pat to next marked st. M1. K1. M1) 4 times. Pat to end of row.

Rep last 2 rows **0(1-3-0-2-0)** time(s) more. **260(252-284-256-296-280)** sts.

Next row: (Pat to next marked st. M1P. P1. M1P) 4 times. Pat to end of row.

Next row: (Pat to next marked st. M1. K1. M1) 4 times. Pat to end of



row. Rep last 2 rows **0(3-2-5-5-9)** times more, then 1st row **1(0-1-1--0-0)** time more. **284(316-340-360-392-440)** sts.

Work **1(0-1-1-0-0)** row even.

Next row: (Dividing row). Pat across first **43(47-51-52-57-68)** sts (Right Front). Slip next **56(62-66-74-80-84)** sts (Right Sleeve) onto length of spare yarn. Cast on **6(6-8-16-20-26)** sts. Join yarn to next st and pat across next **86(98-106-108-118-136)** sts (Back). Cast on **6(6-8-16-20-26)** sts. Slip next **56(62-66-74-80-84)** sts (Left Sleeve) onto length of spare yarn. Pat across rem **43(47-51-52-57-68)** sts (Left Front). **184(204-224-244-272-324)** sts.

Body: Cont even in pat, as established, until work from dividing row measures 16" [40.5 cm], dec 1 st at center and ending with a WS row. **183(203-223-243-119.5-119.5)** sts.

Change to smaller circular needle and proceed as follows:

1st row: K1. *P1. K1. Rep from * to end of row.

2nd row: P1. *K1. P1. Rep from * to end of row.

Rep last 2 rows of (K1. P1) ribbing once more.

Cast off in ribbing.

Sleeves: With RS of work facing, slip **56(62-66-74-80-84)** sts from spare yarn onto three larger double-pointed needles. Cast on **6(6-8-16-20-26)** sts. Join in rnd. Place marker after **3rd(3rd-4th-8th-10th-13th)** cast on st for beg of rnd. **62(68-74-90-100-110)** sts. Purl 12 rnds.

Change to smaller double-pointed needles and proceed as follows:

Next rnd: *K1. P1. Rep from * around.

Rep last rnd 3 times more.

Cast off loosely in ribbing.

Top Yoke

With RS of work facing and larger circular needle, pick up and knit **175(179-187-191-195-199)** sts

evenly across top edge of Cable Yoke.

1st row: (WS). K **29(30-32-32-33-33)** (Left Front). Place marker. K **29(29-29-31-31-33)** (Left Sleeve). Place marker. K **59(61-65-65-67-67)** (Back). Place marker. K **29(30-32-32-33-33)** (Right Sleeve). Place marker. K **29(29-29-31-31-33)** (Right Front).

2nd row: *Purl to 2 sts before marker. (P2tog) twice. Rep from * 3 times more. Purl to end of row.

3rd row: Knit.

Rep last 2 rows 4 times more.

135(139-147-151-155-159) sts rem.

Shape front neck: 1st row:

(RS). *Purl to 2 sts before marker. (P2tog) twice. Rep from * 3 times more. Purl to last **9(10-12-12-14-14)** sts. Turn. Leave rem sts on a st holder.

2nd row: Knit to last **9(10-12-12-14-14)** sts. Turn. Leave rem sts on a st holder. **109(111-115-119-119-123)** sts rem on needle.

3rd row: P2tog. *Purl to 2 sts

before marker.

(P2tog) twice. Rep from * 3 times more. Purl to last 2 sts. P2tog.

4th row: ssk. Knit to last 2 sts. K2tog.

5th and 6th rows: As 3rd and 4th rows.

7th row: As 3rd row.

8th row: ssk. *Knit to 2 sts before marker. (K2tog) twice. Rep from * 3 times more. Knit to last 2 sts. K2tog.

9th row: *Purl to 2 sts before marker. (P2tog) twice. Rep from * 3 times more. Purl to end of row.

10th row: As 8th row. **47(49-53-57-57-61)** sts rem.

Break yarn, leaving all sts on a spare needle.

Neck edging: With pair of smaller needles, K **9(10-12-12-14-14)** from right front st holder.

Pick up and knit 17 sts up right front neck edge. K **47(49-53-57-57-61)** from back edge, dec 4 sts evenly across.

Pick up and knit 17 sts down left front neck edge. K **9(10-12-12-14-**



14) from left front st holder.
95 (99-107-111-115-119) sts.
 Work 4 rows in (K1. P1) ribbing as given for Body.
 Cast off in ribbing.

FINISHING

Pin garment pieces to measurements. Cover with a damp cloth, leaving cloth to dry. Sew underarm seams.

Buttonhole band: With RS of work facing and pair of smaller needles, pick up and knit **121(125-125-127-129-133)** sts evenly up right front edge.

2nd row: (WS). P1. *K1. P1.

Rep from * to end of row.

3rd row: (Buttonhole row). Rib across **86(90-90-92-94-98)** sts.

*Cast off 2 sts Rib 13 sts (including st on needle after cast off). Rep from * once more. Cast off 2 sts. Rib to end of row. (3 buttonholes).

4th row: Rib across, casting on 2 sts over cast off sts.

Work 2 more rows of (K1. P1) ribbing.

Cast off in ribbing.

Button band: With RS of work facing and pair of smaller needles, pick up and knit **121(125-125-127-129-133)** sts evenly down left front edge.

Work as given for Buttonhole band, omitting references to buttonholes.

ABBREVIATIONS: www.yarnspirations.com/abbreviations

2tog = Work K2tog or P2tog as appropriate

Alt = Alternate(ing)

Approx = Approximate(ly)

Beg = Begin(ning)

C3B = Slip next 2 stitches onto a cable needle and leave at back of work. K1, then K2 from cable needle.

C3F = Slip next stitch onto a cable needle and leave at front of work. K2, then K1 from cable needle.

C4B = Slip next 2 stitches onto a cable needle and leave at back of work. K2, then K2 from cable needle.

C4F = Slip next 2 stitches onto a cable needle and leave at front of work. K2, then K2 from cable needle.

Cont = Continue(ity)

Dec = Decrease(ing)

Inc = Increase 1 stitch by knitting into front and back of next stitch.

K = Knit

K2tog = Knit next 2 stitches together.

M1 = Make 1 stitch by picking up horizontal loop lying before next stitch and knitting into back of loop.



M1P = Make 1 stitch by picking up horizontal loop lying before next stitch and purling into back of loop.

P = Purl

P2tog = Purl next 2 stitches together

Pat = Pattern

Rep = Repeat

Rem = Remaining

RS = Right side

Ssk = Slip next 2 stitches knitwise one at a time, then knit through back loops together.

St(s) = Stitch(es)

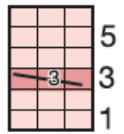
T4B = Slip next 2 stitches onto a cable needle and leave at back of work. K2, then P2 from cable needle.

T4F = Slip next 2 stitches onto a cable needle and leave at front of work. P2, then K2 from cable needle.

WS = Wrong side

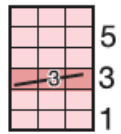


Cable Panel A



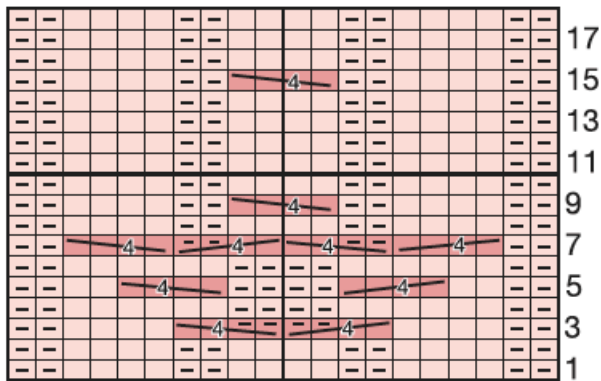
Start Here

Cable Panel B



Start Here

Cable Panel C



Start Here

Key

[Light pink box] = Knit on RS rows and purl on WS rows.

[Dark pink box] = Purl on RS rows and knit on WS rows.

[Cable symbol with 3] = C3B

[Cable symbol with 3] = C3F

