

MATERIALS

Patons® Decor™ (3.5 oz/100 g; 205 yds/187 m)

SIZES	XS/S	M	L	XL	2/3XL	4/5XL	
Oceanside (87103)	6	7	7	8	8	9	balls

Size 4.5 mm (U.S. 7) knitting needles. Size 4 mm (U.S. 6) circular knitting needle 24" [60 cm] long **or size needed to obtain tension**. Cable needle. Snap fastener. 2 stitch holders.



INTERMEDIATE

SIZES

To fit bust measurement

Extra-Small/Small	28-34" [71-86.5 cm]
Medium	36-38" [91.5-96.5 cm]
Large	40-42" [101.5-106.5 cm]
Extra-Large	44-46" [112-117 cm]
2/3 Extra-Large	48-54" [122-137 cm]
4/5 Extra-Large	56-62" [142-157.5 cm]

Finished bust

Extra-Small/Small	36" [91.5 cm]
Medium	40" [101.5 cm]
Large	44½" [113 cm]
Extra-Large	50" [127 cm]
2/3 Extra-Large	56" [142 cm]
4/5 Extra-Large	65" [165 cm]

GAUGE

20 sts and 26 rows = 4" [10 cm] in stocking st with larger needles.

INSTRUCTIONS

The instructions are written for smallest size. If changes are necessary for larger sizes the instructions will be written thus (). Numbers for each size are shown in the same color throughout the pattern. When only one number is given in black, it applies to all sizes.

CABLE PANEL

(worked over 18 sts) (see page 5).

- 1st row:** (RS). K3. C6B. C6F. K3.
 - 2nd row:** K3. P12. K3.
 - 3rd row:** Knit.
 - 4th row:** As 2nd row.
 - 5th row:** As 1st row.
 - 6th row:** K3. P3. K6. P3. K3.
 - 7th row:** K2. Cr4B. K6. Cr4F. K2.
 - 8th row:** K2. P3. K8. P3. K2.
 - 9th row:** Knit.
 - 10th row:** As 8th row.
 - 11th to 16th rows:** As 9th and 10th rows 3 times more.
 - 17th row:** K2. Cr4F. K6. Cr4B. K2.
 - 18th row:** As 6th row.
 - 19th row:** K3. C6F. C6B. K3.
 - 20th row:** K3. P12. K3.
 - 21st row:** Knit.
 - 22nd row:** As 20th row.
 - 23rd row:** As 19th row.
 - 24th row:** As 20th row.
 - 25th row:** Knit.
 - 26th row:** As 20th row.
- These 26 rows form Cable Panel.

LEFT FRONT

With larger needles, cast on **34 (37-42-44-54-63)** sts. Knit 6 rows (garter st), noting first row is WS.



Next row: (WS). (K3. M1) 4 times. Knit to end of row. **38 (41-46-48-58-67)** sts.

Proceed in pat as follows:

1st row: (RS). **K20 (23-28-30-40-49)**.

Work 1st row Cable Panel.

2nd row: Work 2nd row Cable Panel. **P20 (23-28-30-40-49)**.

Cable Panel is now in position.

Cont in pat for 4 more rows.

Next row: (RS). (Inc row). **K19 (22-27-29-39-48)**. M1. K1 (place marker on last st). Work 7th row Cable Panel.

*Work 5 rows even in pat.

Next row: (RS). (Inc row). Knit to marked st. M1. Knit marked st. Work appropriate row Cable Panel.*

Rep from * to * **11 (11-12-12-13-13)** times more. **51 (54-60-62-73-82)** sts.

Work **3 (3-1-1-1-1)** row(s) even in pat.

Shape armhole: Next row: (RS). Cast off **6 (8-10-11-10-13)** sts. Pat to end of row. **45 (46-50-51-63-69)** sts rem.

Work 1 row even in pat.

Sizes XS/S and M only: Next row: K2tog. Knit to marked st. M1. Knit marked st. Work appropriate row Cable Panel. Work 1 row even in pat.

Sizes 2/3XL and 4/5XL only: Next row: (RS). Cast off **(10-13)** sts. Pat to end of row. **(53-56)** sts rem.

Work 1 row even in pat.

All sizes: Dec 1 st at armhole edge on next row and every following alt row **4 (6-9-9-9-10)** times more, AT SAME TIME, inc 1 st at front edge (as before) on following 6th rows from previous inc **1 (2-3-3-4-4)** time(s) more. **41 (41-43-44-47-49)** sts.

Keeping cont of pat, inc 1 st at front edge (as before) on every following 6th row from previous inc twice more. **43 (43-45-46-49-51)** sts, ending on WS row or front edge.

Work **3 (1-5-5-5-5)** row(s) even in pat.

Shape neck: Next row: (RS). **K20 (20-21-23-24-26)** (neck edge). **Turn.** Leave rem sts on a spare needle.

Dec 1 st at neck edge on next 6 rows, then on every following alt row twice more. **12 (12-13-15-16-18)** sts rem.

Cont even until armhole measures **7½ (8-9-9-9½-9½)" [19 (20.5-23-23-24-24) cm]**, ending with a WS row.

Shape shoulder: Cast off **6 (6-6-7-8-9)** sts beg next row. Work 1 row even. Cast off rem **6 (6-7-8-8-9)** sts.

RIGHT FRONT

With larger needles, cast on **34 (37-42-44-54-63)** sts.

Knit 6 rows (garter st), noting first row is WS.

Next row: (WS). Knit to last 16 sts. (M1. K3) 4 times. K4. **38 (41-46-48-58-67)** sts.

Proceed in pat as follows:

1st row: (RS). Work 1st row Cable Panel. **K20 (23-28-30-40-49)**.

2nd row: **P20 (23-28-30-40-49)**. Work 2nd row Cable Panel.

Cable Panel is now in position.

Cont in pat for 4 more rows.

Next row: (RS). (Inc row). Work 7th row Cable Panel. K1. M1. **K19 (22-27-29-39-48)**.

*Work 5 rows even in pat.

Next row: (RS). (Inc row). Work appropriate row Cable Panel. K1. M1. Knit to end of row.*

Rep from * to * **11 (11-12-12-13-13)** times more. **51 (54-60-62-73-82)** sts.

Work **4 (4-2-2-2-2)** rows even in pat.

Shape armhole: Next row: (WS). Cast off **6 (8-10-11-10-13)** sts. Pat to end of row. **45 (46-50-51-63-69)** sts rem.

Sizes XS/S and M only: Next row: Work appropriate row Cable Panel. K1. M1. Knit to last 2 sts. K2tog.

Work 1 row even in pat.

Sizes 2/3XL and 4/5XL only: Next row: (RS). Cast off **(10-13)** sts. Pat to end of row. **(53-56)** sts rem.

Work 1 row even in pat.

All sizes: Dec 1 st at armhole edge on next row and every following alt row **4 (6-9-9-9-10)** times more, AT SAME TIME, inc 1 st at front edge (as before) on every following 6th row from previous inc **1 (2-3-3-4-4)** time(s) more. **41 (41-43-44-47-49)** sts.

Keeping cont of pat, inc 1 st at front edge (as before) on every following 6th row from previous inc twice more. **43 (43-45-46-49-51)** sts, ending on WS row or armhole edge.

Work **4 (2-6-6-6-6)** rows even in pat.



Shape neck: Next row: (WS). P20 (20-21-23-24-26) (neck edge). **Turn.** Leave rem sts on a spare needle.

Dec 1 st at neck edge on next 6 rows, then on following alt rows twice more. 12 (12-13-15-16-18) sts rem.

Cont even until armhole measures 7½ (8-9-9-9½-9½)" [19 (20.5-23-23-24-24) cm], ending with a RS row.

Shape shoulder: Cast off 6 (6-6-7-8-9) sts beg next row. Work 1 row even. Cast off rem 6 (6-7-8-8-9) sts.

BACK

With larger needles, cast on 85 (95-105-111-131-151) sts.

Knit 7 rows (garter st), inc 5 (5-5-7-7-7) sts evenly across last row. 90 (100-110-118-138-158) sts.

Proceed in stocking st until work from beg measures same length as Fronts to armhole shaping, ending with a purl row.

Shape armholes: Cast off 6 (8-10-11-10-13) sts beg next 2 (2-2-2-4-4) rows. 78 (84-90-96-98-106) sts rem.

Dec 1 st each end of next row and every following alt row 5 (7-9-9-9-10) times more. 66 (68-70-76-78-84) sts rem.

Cont even until armhole measures 4 rows less than Fronts to beg of shoulder shaping, ending with a purl row.

Shape back neck: Next row: (RS). K15 (15-16-18-19-21) (neck edge). **Turn.** Leave rem sts on a spare needle.

Dec 1 st at neck edge on next 3 rows. 12 (12-13-15-16-18) sts rem.

Shape shoulder: Cast off 6 (6-6-7-8-9) sts beg next row. Work 1 row even. Cast off rem 6 (6-7-8-8-9) sts.

With RS facing, slip next 36 (38-38-40-40-42) sts onto a st holder. Join yarn to rem sts and knit to end of row.

Dec 1 st at neck edge on next 3 rows. 12 (12-13-15-16-18) sts rem.

Knit 1 row.

Shape shoulder: Cast off 6 (6-6-7-8-9) sts beg next row. Work 1 row even. Cast off rem 6 (6-7-8-8-9) sts.

SLEEVES

With larger needles, cast on 96 (104-104-104-107-107) sts.

Knit 7 rows (garter st), inc 11 (19-19-19-22-22) sts evenly across last row. 107 (123-123-123-129-129) sts.

Proceed in pat as follows:

Size XS/S only: 1st row: (RS). P6. (K6. P3. K6. P5) 5 times. P1.

2nd and alt rows: K1. (K5. P6. K3. P6) 5 times. K6.

3rd row: P6. (C6B. P3. C6F. P5) 5 times. P1.

Sizes M, L, XL, 2/3XL and 4/5XL only:

1st row: (RS). P(3-3-3-6-6). K6. P5. (K6. P3. K6. P5) 5 times. K6. P(3-3-3-6-6).

2nd and alt rows: K(3-3-3-6-6). P6. K5. (P6. K3. P6. K5) 5 times. P6. K(3-3-3-6-6).

3rd row: P(3-3-3-6-6). C6F. P5. (C6B. P3. C6F. P5) 5 times. C6B. P(3-3-3-6-6).

All sizes: 5th and 7th rows: As 1st row.

8th row: As 2nd row.

These 8 rows form Cable Pat.

Cont in Cable Pat until work from beg measures approx 4" [10 cm], ending on an 8th row of pat.

Size XS/S only: 1st row: (RS). (Dec row). P2. P2tog. P2. (K6. P2tog. P1. K6. P2. P2tog. P1) 5 times. P1. 96 sts rem.

2nd and alt rows: K1. (K4. P6. K2. P6) 5 times. K5.

3rd row: P5. (C6B. P2. C6F. P4) 5 times. P1.

5th, 7th and 9th rows: P5. (K6. P2. K6. P4) 5 times. P1.

10th row: As 2nd row.

Rep 3rd to 10th rows for Cable Pat.

Sizes M, L, XL, 2/3XL and 4/5XL only:

1st row: (RS). (Dec row). P(0-0-0-2-2). P2tog. P(1-1-1-2-2). K6. P2. P2tog. P1. (K6. P2tog. P1. K6. P2. P2tog. P1) 5 times. K6. P(1-1-1-2-2). P2tog. P(0-0-0-2-2). (110-110-110-116-116) sts rem.

2nd and alt rows: K(2-2-2-5-5). P6. K4. (P6. K2. P6. K4) 5 times. P6. K(2-2-2-5-5).

3rd row: P(2-2-2-5-5). C6F. P4. (C6B. P2. C6F. P4) 5 times. C6B. P(2-2-2-5-5).

5th, 7th and 9th rows: P(2-2-2-5-5). K6. P4. (K6. P2. K6. P4) 5 times. K6. P(2-2-2-5-5).

10th row: As 2nd row.

Rep 3rd to 10th rows for Cable Pat.

All sizes: Cont in Cable Pat until work from beg measures approx 8" [20.5 cm], ending on an 8th row of pat.

Size XS/S only: 1st row: (RS). (Dec row). P2. P2tog. P1. (K6. P2tog. K6. P1. P2tog. P1) 5 times. P1. 85 sts rem.

2nd and alt rows: K1. (K3. P6. K1. P6) 5 times. K4.

3rd row: P4. (C6B. P1. C6F. P3) 5 times. P1.

5th, 7th and 9th rows: P4. (K6. P1. K6. P3) 5 times. P1.

10th row: As 2nd row.

Rep 3rd to 10th rows for Cable Pat.



Sizes M, L, XL, 2/3XL and 4/5XL only:

1st row: (RS). (Dec row). P2tog. P(0-0-0-3-3). K6. P1. P2tog. P1. (K6. P2tog. K6. P1. P2tog. P1) 5 times. K6. P(0-0-0-3-3). P2tog. (97-97-97-103-103) sts rem.

2nd and alt rows: K(1-1-1-4-4). P6. K3. (P6. K1. P6. K3) 5 times. P6. K(1-1-1-4-4).

3rd row: P(1-1-1-4-4). C6F. P3. (C6B. P1. C6F. P3) 5 times. C6B. P(1-1-1-4-4).

5th, 7th and 9th rows: P(1-1-1-4-4). K6. P3. (K6. P1. K6. P3) 5 times. K6. P(1-1-1-4-4).

10th row: As 2nd row.

Rep 3rd to 10th rows for Cable Pat.

All sizes: Cont in Cable Pat until work from beg measures approx 10½" [26.5 cm], ending on a 4th row of pat.

Size XS/S only: 1st row: P3. (Cr4B. K7. Cr4F. P1) 5 times. P2.

2nd row: K3. (P3. K9. P3. K1) 5 times. P2.

3rd row: P3. (K15. P1) 5 times. P2.

4th row: As 2nd row.

5th to 10th rows: As 3rd and 4th rows 3 times more.

11th row: P3. (Cr4F. K7. Cr4B. P1) 5 times. P2.

12th row: K4. (P3. K7. P3. K3) 5 times. K1.

13th row: P4. (C6F. P1. C6B. P3) 5 times. P1.

14th row: K4. (P6. K1. P6. K3) 5 times. K1.

15th row: P4. (K6. P1. K6. P3) 5 times. P1.

16th row: As 14th row.

17th to 20th rows: As 15th and 16th rows twice more.

Rep 13th to 20th rows for Cable Pat.

Sizes M, L, XL, 2/3XL and 4/5XL only:

1st row: K(4-4-4-7-7). Cr4F. P1. (Cr4B. K7. Cr4F. P1) 5 times. Cr4B. K(4-4-4-7-7).

2nd row: K(5-5-5-8-8). P3. K1. (P3. K9. P3. K1) 5 times. P3. K(5-5-5-8-8).

3rd row: K(8-8-8-11-11). P1. (K15. P1) 5 times. K(8-8-8-11-11).

4th row: As 2nd row.

5th to 10th rows: As 3rd and 4th rows 3 times more.

11th row: K(4-4-4-7-7). Cr4B. P1. (Cr4F. K7. Cr4B. P1) 5 times. Cr4F. K(4-4-4-7-7).

12th row: K(4-4-4-7-7). P3. K3. (P3. K7. P3. K3) 5 times. P3. K(4-4-4-7-7).

13th row: P(1-1-1-4-4). C6B. P3. (C6F. P1. C6B. P3) 5 times. C6F. P(1-1-1-4-4).

14th row: K(1-1-1-4-4). P6. K3. (P6. K1. P6. K3) 5 times. P6. K(1-1-1-4-4).

15th row: P(1-1-1-4-4). K6. P3. (K6. P1. K6. P3) 5 times. K6. P(1-1-1-4-4).

16th row: As 14th row.

17th to 20th rows: As 15th and 16th rows twice more.

Rep 13th to 20th rows for Cable Pat.

All sizes: Cont in Cable Pat until work from beg measures 14" [35.5 cm], ending on a WS row.

Shape top: Keeping cont of pat, cast off 3 (4-5-5-7-7) sts beg next 2 rows. 79 (89-87-87-89-89) sts rem.

Dec 1 st each end of next row and following alt rows 2 (3-6-6-8-8) times more, then on every row until 15 sts rem. Cast off in pat.

FINISHING

Pin garment pieces to measurements. Cover with a damp cloth, leaving cloth to dry. Sew shoulder seams.

Neck edging: With RS facing slip first 18 sts (Cable Panel) of right front spare needle onto a st holder. Join yarn to rem sts and with circular needle knit rem 5 (5-6-5-7-7) sts from right front spare needle. Pick up and knit 18 sts up right front neck edge and 5 sts down right back neck edge. K36 (38-38-40-40-42) from back neck st holder, dec 4 sts evenly across. Pick up and knit 5 sts up left back neck edge and 18 sts down left front neck edge. K23 (23-24-23-25-25) from left

front neck spare needle, dec 6 sts evenly across. 100 (102-104-104-108-110) sts. Knit 6 rows (garter st). Cast off knitwise (WS).

Cable extension: With WS facing and larger needles, join yarn to 18 sts on right front st holder and pat to end of row. Cont in Cable Pat until extension measures 2½" [6 cm] from beg, ending with a WS row.

Next row: (RS). (K3. K2tog) 3 times. K3. 15 sts rem. Knit 2 rows. Cast off knitwise (WS).

Loop: With larger needles, cast on 4 sts. Work 3" [7.5 cm] in garter st. Cast off. Sew side and sleeve seams. Sew in sleeves.

Try on garment and mark position for overlap of right and left fronts at neck edge. Sew loop in position to left neck edge at marker for cable extension. Sew snap fastener in position to WS of right front and left front neck edge at marker.



☐ = Knit on RS rows,
Purl on WS rows

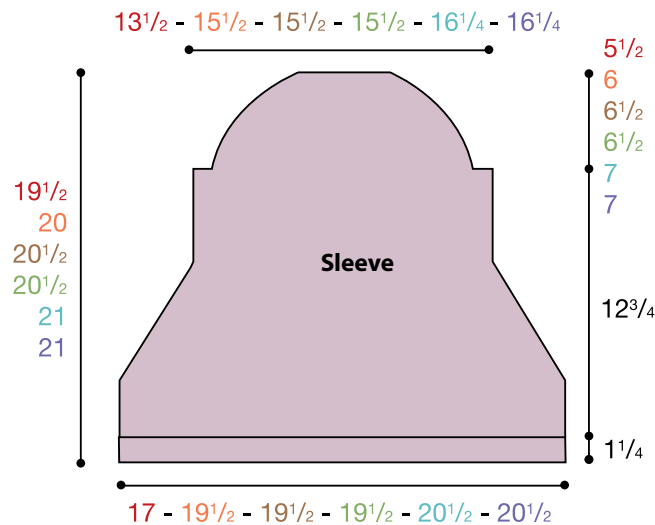
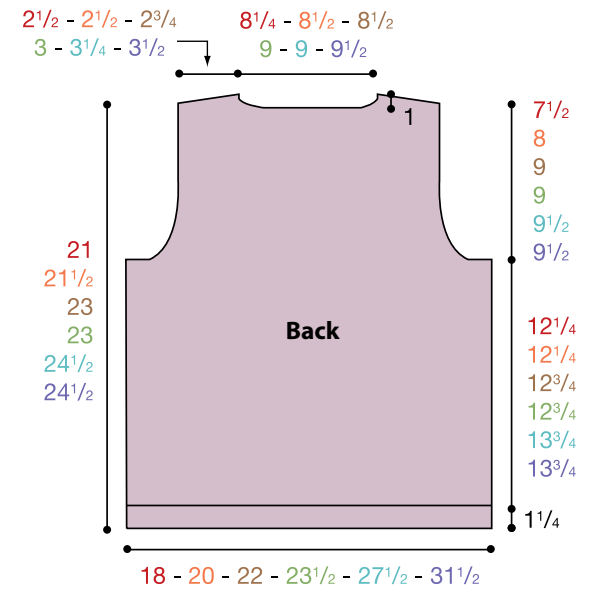
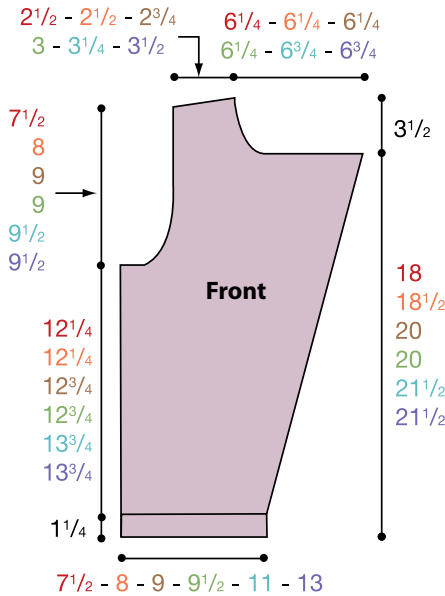
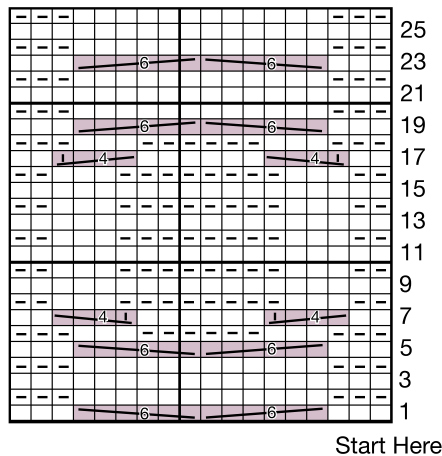
☐ = Purl on RS rows,
Knit on WS rows

= C6B

= C6F

= Cr4B

= Cr4F



ABBREVIATIONS: www.yarnspirations.com/abbreviations

Approx = Approximately
Alt = Alternate(ing)
Beg = Beginning
C6B = Slip next 3 stitches onto cable needle and leave at back of work. K3, then K3 from cable needle
C6F = Slip next 3 stitches onto cable needle and leave at front of work. K3, then K3 from cable needle
Cr4B = Slip next stitch onto cable needle and leave at back of work. K3, then knit 1 from cable needle
Cr4F = Slip next 3 stitches onto cable needle and leave at front of work. K1, then knit 3 from cable needle

Cont = Continue(ity)
Dec = Decrease(ing)
Inc(s) = Increase 1 stitch by knitting into front and back of next stitch
K = Knit
K2tog = Knit next 2 stitches together.
M1 = Make 1 stitch by picking up horizontal loop lying before next stitch and knitting into back of loop

P = Purl
P2tog = Purl next 2 stitches together
Pat = Pattern
Rep = Repeat
Rem = Remaining
RS = Right side
St(s) = Stitch(es)
WS = Wrong side

