



STITCH GLOSSARY: www.patonsyarns.com/abbreviations

Alt = Alternate(ing).
 Beg = Beginning.
 C6B = Slip next 3 stitches onto cable needle and leave at back of work. K3, then K3 from cable needle.
 C6F = Slip next 3 stitches onto cable needle and leave at front of work. K3, then K3 from cable needle.
 Cont = Continue(ity).
 Dec = Decrease(ing).
 Inc(s) = Increase 1 stitch by knitting into front and back of next stitch.
 K = Knit.
 K2tog = Knit next 2 stitches together.

M1 = Make 1 stitch by picking up horizontal loop lying before next stitch and knitting into back of loop.



P = Purl.
 P2tog = Purl next 2 stitches together.
 P2togtbl = Purl next 2 stitches together through back loops.
 Pat = Pattern.
 Psso = Pass slipped stitch over.
 Rep = Repeat.
 Rem = Remaining.
 RS = Right side.
 Ssk = Slip next 2 stitches knitwise one at a time, then knit through back loops together.

St(s) = Stitch(es).
 T4B = Slip next stitch onto cable needle and leave at back of work. K3, then P1 from cable needle.
 T4F = Slip next 3 stitches onto cable needle and leave at front of work. P1, then K3 from cable needle.
 T5B = Slip next 2 stitches onto cable needle and leave at back of work. K3, then P2 from cable needle.
 T5F = Slip next 3 stitches onto cable needle and leave at front of work. P2, then K3 from cable needle.
 Tog = Together.
 WS = Wrong side.
 Yo = Yarn over.

MATERIALS

Patons® Canadiana or Patons® Decor or Patons® Classic Wool
 Patons® Classic Wool (77605 Pumpkin) shown in photograph

PATONS® CANADIANA
 OR PATONS® DECOR
 OR PATONS® CLASSIC WOOL

CABLES AND COLLAR CARDIGAN
 (TO KNIT)

SIZES

To fit bust measurement

Extra-Small / Small: 28-34" [71-86.5 cm]

Medium: 36-38" [91.5-96.5 cm]

Large: 40-42" [101.5-106.5 cm]

Extra-Large: 44-46" [112-117 cm]

2/3 Extra-Large: 48-54" [122-137 cm]

4/5 Extra-Large: 56-62" [142-157.5 cm]

Finished bust

Extra-Small / Small: 37" [94 cm]

Medium: 40" [101.5 cm]

Large: 46" [117 cm]

Extra-Large: 48" [122 cm]

2/3 Extra-Large: 55" [139.5 cm]

4/5 Extra-Large: 63" [160 cm]

SIZES	XS/S	M	L	XL	2/3XL	4/5XL	
Color of your choice	6	7	7	8	9	9	balls
Sizes 4mm (U.S. 6) and 4.5 mm (U.S. 7) knitting needles or size needed to obtain tension. Cable needle. 5 large snap fasteners. 2 toggles.							

TENSION

20 sts and 26 rows = 4" [10 cm] with larger needles in stocking st.

INSTRUCTIONS

The instructions are written for smallest size. If changes are necessary for larger sizes the instructions will be written thus (). Numbers for each size are shown in the same color throughout the pattern. When only one number is given in black, it applies to all sizes.

CABLE PANEL (worked over 24 sts)

(see page 5).

1st row: (RS). P2. K3. P4. K6. P4. K3. P2.

2nd and alt rows: Knit all knit sts and purl all purl sts as they appear.

3rd row: P2. K3. P4. C6B. P4. K3. P2.

5th row: P2. K3. P3. T4B. T4F. P3. K3. P2.

7th row: P2. T5F. T4B. P2. T4F. T5B. P2.

9th row: P4. C6B. P4. C6F. P4.

11th row: P2. (T5B. T5F) twice. P2.

13th row: As 3rd row.

15th row: P2. (T5F. T5B) twice. P2.

17th row: As 9th row.

19th row: P2. T5B. T4F. P2. T4B. T5F. P2.

21st row: P2. K3. P3. T4F. T4B. P3. K3. P2.

23rd row: As 3rd row.

25th and 27th rows: As 1st row.

28th row: As 2nd row.

These 28 rows form Cable Panel.

Patons®
 Canadiana DECOR
 Classic Wool

P.O. Box 40, Listowel ON N4W 3H3

www.patonsyarns.com

CABLES AND COLLAR CARDIGAN

1



BACK

With smaller needles, cast on **97 (103-115-121-136-151)** sts.

****1st row:** (RS). *K2. P1. Rep from * to last st. K1.

2nd row: P1. *K2. P1. Rep from * to end of row. Rep last 2 rows of Farrow Rib Pat for 3" [7.5 cm], ending on a 2nd row.

Change to larger needles.

Next row: (RS). Knit.

Next row: Knit.

Next row: Purl.**

Next row: Purl, inc **9 (11-11-11-12-19)** sts evenly across. **106 (114-126-132-148-170)** sts.

Proceed in pat as follows:

1st row: (RS). **K8 (12-16-19-26-35)**. *P1. yo. ssk. Work 1st row Cable Panel. K2tog. yo. P1.* **K30 (30-34-34-36-40)**. Rep from * to * once. **K8 (12-16-19-26-35)**.

2nd row: **P8 (12-16-19-26-35)**. *K1. P2. Work 2nd row Cable Panel. P2. K1.* **P30 (30-34-34-36-40)**. Rep from * to * once. **P8 (12-16-19-26-35)**.

3rd row: **K8 (12-16-19-26-35)**. *P1. K2tog. yo. Work 3rd row Cable Panel. yo. ssk. P1.* **K30 (30-34-34-36-40)**. Rep from * to * once. **K8 (12-16-19-26-35)**.

4th row: As 2nd row.

These 4 rows form pat. Cable Panel is now in position.

Cont in pat, keeping cont of Cable Panel, until work from beg measures **13½ (13½-14-14-14½-14½)" [34.5 (34.5-35.5-35.5-37-37) cm]**, ending on a WS row.

Shape raglans: Keeping cont of pat, cast off **2 (2-2-3-3-3)** sts beg next 2 rows. **102 (110-122-126-142-164)** sts rem.

Sizes L, 2/3XL and 4/5XL only: 1st row: (RS). K2. ssk. Pat to last 4 sts. K2tog. K2.

2nd row: P2. P2tog. Pat to last 4 sts. P2togtbl. P2.

Rep last 2 rows (**2-14-30**) times more, then 1st row once more. (**108-80-38**) sts rem.

Next row: P3. Pat to last 3 sts. P3.

Sizes XS/S, M, L, XL and 2/3XL only:

1st row: (RS). K2. ssk. Pat to last 4 sts. K2tog. K2.

2nd row: P2. P2tog. Pat to last 4 sts. P2togtbl. P2.

3rd row: As 1st row.

4th row: P3. Pat to last 3 sts. P3.

Rep last 4 rows **8 (10-11-14-6)** times more. **48 (44-36-36-38)** sts rem.

Sizes XS/S and M only: 1st row: (RS). K2. ssk. Pat to last 4 sts. K2tog. K2.

2nd row: P3. Pat to last 3 sts. P3.

Rep last 2 rows **6 (4)** times more. 34 sts rem.

All sizes: Cast off rem **34 (34-36-36-38-38)** sts.

LEFT FRONT

*****With smaller needles cast on 46 (49-55-58-67-76)** sts.

Work from ** to ** as given for Back

Next row: Purl, inc **6 (7-7-7-6-8)** sts evenly across. **52 (56-62-65-73-84)** sts.***

Proceed in pat as follows:

1st row: (RS). **K8 (12-16-19-25-32)**. P1. yo. ssk. Work 1st row Cable Panel. K2tog. yo. P1. **K14 (14-16-16-18-22)**.

2nd row: **K14 (14-16-16-18-22)**. K1. P2. Work 2nd row Cable Panel. P2. K1. **P8 (12-16-19-25-32)**.

3rd row: **K8 (12-16-19-25-32)**. P1. K2tog. yo. Work 3rd row Cable Panel. yo. ssk. P1. **K14 (14-16-16-18-22)**.

4th row: As 2nd row.

These 4 rows form pat. Cable Panel is now in position.

Cont in pat, keeping cont of Cable Panel, until work from beg measures **13½ (13½-14-14-14½-14½)" [34.5 (34.5-35.5-35.5-37-37) cm]**, ending on a WS row.

Shape raglan: Keeping cont of pat, cast off **2 (2-2-3-3-3)** sts beg next row. **50 (54-60-62-70-81)** sts rem.

Work 1 row even in pat.

Sizes L, 2/3XL and 4/5XL only: 1st row: (RS). K2. ssk. Pat to end of row.

2nd row: Pat to last 4 sts. P2togtbl. P2.

Rep last 2 rows (**2-9-10**) times more, then 1st row (**1-0-0**) time more. (**53-50-59**) sts rem.

Size L only: Next row: Pat to last 3 sts. P3.

Sizes XS/S, M, L and XL only: 1st row: (RS). K2. ssk. Pat to end of row.

2nd row: Pat to last 4 sts. P2togtbl. P2.

3rd row: As 1st row.

4th row: Pat to last 3 sts. P3.

Rep last 4 rows **3 (4-2-4)** times more. **38 (39-44-47)** sts rem.

Shape neck: 1st row: K2. ssk. Pat to last 2 sts. K2tog.

2nd row: Pat to last 4 sts. P2togtbl. P2.

3rd row: As 1st row.

4th row: Pat to last 3 sts. P3.

Rep last 4 rows **4 (5-6-6)** times more. **13 (9-9-12)** sts rem.

Sizes XS/S and M only: 1st row: K2. ssk. Pat to last 2 sts. K2tog.

2nd row: Pat to last 3 sts. P3.

Rep last 2 rows **3 (1)** time(s) more. 5 sts rem.

Next row: K2. ssk. K1.

Next row: P4.

Next row: K2. ssk.

Next row: P3.

Next row: K1. ssk.

Next row: P2.

Next row: ssk. Fasten off.

Sizes L and XL only: 1st row: K2. ssk. Pat to last 2 sts. K2tog.

2nd row: Pat to last 4 sts. P2togtbl. P2.

3rd row: K2. ssk. Pat to end of row.

4th row: Pat to last 3 sts. P3. (**5-8**) sts rem.

5th row: K2. ssk. K(**1-3**).

6th row: P(**0-2**). P2togtbl. P2.

7th row: K(**1-2**). ssk. K(**0-2**).

8th row: P(**2-5**).

Size L only: 9th row: ssk. Fasten off.

 **Patons**[®]

Canadiana DECOR

Classic Wool

P.O. Box 40, Listowel ON N4W 3H3

www.patonsyarns.com

CABLES AND COLLAR CARDIGAN

2



Size XL only: 9th row: K2. ssk. K1.

10th row: P2togtbl. P2.

11th row: K1. ssk.

12th row: P2.

13th row: ssk. Fasten off.

Sizes 2/3XL and 4/5XL only: Shape neck:

1st row: K2. ssk. Pat to last 2 sts. K2tog.

2nd row: Pat to last 4 sts. P2togtbl. P2.

Rep last 2 rows (4-15) times more, then 1st row (1-0) time. (33-11) sts rem.

Size 2/3XL only: Next row: (WS). Pat to last 3 sts. P3.

Proceed as follows:

1st row: K2. ssk. Pat to last 2 sts. K2tog.

2nd row: Pat to last 4 sts. P2togtbl. P2.

3rd row: As 1st row.

4th row: Pat to last 3 sts. P3.

Rep last 4 rows 4 times more. 8 sts rem.

1st row: K2. ssk. K3.

2nd row: P2. P2togtbl. P2.

3rd row: K2. ssk. K2.

4th row: P5.

5th row: K2. ssk. K1.

6th row: P2togtbl. P2.

7th row: K1. ssk.

8th row: P2.

9th row: ssk. Fasten off.

Size 4/5XL only: 1st row: K2. ssk. Pat to end of row.

2nd row: Pat to last 4 sts. P2togtbl. P2.

Rep last 2 rows 3 times more. 4 sts rem.

Next row: K2. ssk.

Next row: P2togtbl. P1.

Next row: ssk. Fasten off.

RIGHT FRONT

Work from *** to *** as given for Left Front.

Proceed in pat as follows:

1st row: (RS). K14 (14-16-16-18-22). P1. yo. ssk. Work 1st row Cable Panel. K2tog. yo. P1. K8 (12-16-19-25-32).

2nd row: P8 (12-16-19-25-32). K1. P2. Work 2nd row Cable Panel. P2. K1. K14 (14-16-16-18-22).

3rd row: K14 (14-16-16-18-22). P1. K2tog. yo.

Work 3rd row Cable Panel. yo. ssk. P1. K8 (12-16-19-25-32).

4th row: As 2nd row.

These 4 rows form pat. Cable Panel is now in position.

Cont in pat, keeping cont of Cable Panel, until work from beg measures 13½ (13½-14-14-14½-14½)" [34.5 (34.5-35.5-35.5-37-37) cm], ending on a RS row.

Shape raglan: Keeping cont of pat, cast off 2 (2-2-3-3-3) sts beg next row. 50 (54-60-62-70-81) sts rem.

Sizes L, 2/3XL and 4/5XL only: 1st row: (RS).

Pat to last 4 sts. K2tog. K2.

2nd row: P2. P2tog. Pat to end of row.

Rep last 2 rows (2-9-10) times more, then 1st row (1-0-0) time more. (53-50-59) sts rem.

Size L only: Next row: P3. Pat to end of row.

Sizes XS/S, M, L and XL only: 1st row: (RS).

Pat to last 4 sts. K2tog. K2.

2nd row: P2. P2tog. Pat to end of row.

3rd row: As 1st row.

4th row: P3. Pat to end of row.

Rep last 4 rows 3 (4-2-4) times more. 38 (39-44-47) sts rem.

Shape neck: 1st row: ssk. Pat to last 4 sts. K2tog. K2.

2nd row: P2. P2tog. Pat to end of row.

3rd row: As 1st row.

4th row: P3. Pat to end of row.

Rep last 4 rows 4 (5-6-6) times more. 13 (9-9-12) sts rem.

Sizes XS/S and M only: 1st row: ssk. Pat to last 4 sts. K2tog. K2.

2nd row: P3. Pat to end of row.

Rep last 2 rows 3 (1) time(s) more. 5 sts rem.

Next row: K1. K2tog. K2.

Next row: P4.

Next row: K2tog. K2.

Next row: P3.

Next row: K2tog. K1.

Next row: P2.

Next row: K2tog. Fasten off.

Sizes L and XL only: 1st row: ssk. Pat to last 4 sts. K2tog. K2.

2nd row: P2. P2tog. Pat to end of row.

3rd row: Pat to last 4 sts. K2tog. K2.

4th row: P3. Pat to end of row. (5-8) sts rem.

5th row: K(1-3). K2tog. K2.

6th row: P2. P2tog. P(0-2).

7th row: K(0-2). K2tog. K(1-2).

8th row: P(2-5).

Size L only: 9th row: K2tog. Fasten off.

Size XL only: 9th row: K1. K2tog. K2.

10th row: P2tog. P2.

11th row: K2tog. K1.

12th row: P2.

13th row: K2tog. Fasten off.

Sizes 2/3XL and 4/5XL only: Shape neck:

1st row: ssk. Pat to last 4 sts. K2tog. K2.

2nd row: P2. P2tog. Pat to end of row.

Rep last 2 rows (4-15) times more, then 1st row (1-0) time. (33-11) sts rem.

Size 2/3XL only: Next row: (WS). P3. Pat to end of row.

Proceed as follows:

1st row: ssk. Pat to last 4 sts. K2tog. K2.

2nd row: P2. P2tog. Pat to end of row.

3rd row: As 1st row.

4th row: P3. Pat to end of row.

Rep last 4 rows 4 times more. 8 sts rem.

1st row: K3. K2tog. K2.

2nd row: P2. P2tog. P2.

3rd row: K2. K2tog. K2.

4th row: P5.

5th row: K1. K2tog. K2.

6th row: P2. P2tog.

7th row: K2tog. K1.

8th row: P2.

9th row: K2tog. Fasten off.



Size 4/5XL only: 1st row: Pat to last 4 sts. K2tog. K2.

2nd row: P2. P2tog. Pat to end of row. Rep last 2 rows 3 times more. 4 sts rem.

Next row: K2tog. K2.

Next row: P1. P2tog.

Next row: K2tog. Fasten off.

SLEEVES

With smaller needles, cast on **64 (64-70-70-70-76)** sts.

Work 6" [15 cm] in Farrow Rib pat, as given for Back, ending on a 2nd row.

Place markers on each side of ribbing 3" [7.5 cm] up from cast on edge for cuff turn back.

Change to larger needles.

Next row: (RS). Knit.

Next row: Knit.

Next row: Purl.

Next row: Purl, inc **2 (4-4-8-8-8)** sts evenly across. **66 (68-74-78-78-84)** sts.

Proceed in stocking st for 4 rows.

Inc 1 st each end of next row and every following 6th row 3 times more. **74 (76-82-86-86-92)** sts.

Cont even until work from markers (fold back edge) measures 7" [18 cm], ending with a purl row.

Shape raglans: Cast off **2 (2-2-3-3-3)** sts beg next 2 rows. **70 (72-78-80-80-86)** sts rem.

1st row: (RS). K2. ssk. Knit to last 4 sts. K2tog. K2.

2nd row: P2. P2tog. Purl to last 4 sts. P2togtbl. P2.

3rd row: As 1st row.

4th row: P3. Purl to last 3 sts. P3.

Rep last 4 rows **4 (3-4-3-3-3)** times more. **40 (48-48-56-56-62)** sts rem.

1st row: (RS). K2. ssk. Knit to last 4 sts. K2tog. K2.

2nd row: P3. Purl to last 3 sts. P3.

Rep last 2 rows **14 (18-17-21-21-23)** times more. Cast off rem **10 (10-12-12-12-14)** sts.

FINISHING

Pin garment pieces to measurements. Cover with a damp cloth, leaving cloth to dry.

Sew raglan seams.

Right Front edging: With RS facing and smaller needles pick up and knit **79 (82-82-85-88-88)** sts up right front edge from cast on edge to first neck dec.

Rep on a 2nd row, work 5 rows in Farrow Rib pat as given for Back. Cast off in pat.

Left Front edging: Work as for Right Front edging, picking up sts between first front neck dec and cast on edge.

SLEEVE TABS (make 2).

With smaller needles, cast on 8 sts.

Work 7½" [19 cm] in garter st (knit every row). Cast off.

COLLAR

With smaller needles, cast on 6 sts.

1st row: (WS). K3. P1. K2.

2nd row: K2. M1. K1. Place marker on last st. M1. K3. 8 sts.

3rd row: Knit to marked st. Purl marked st. Knit to end of row.

4th row: Knit to marked st. M1. Knit marked st. M1. Knit to end of row.

Rep last 2 rows twice more. 14 sts rem.

1st row: (WS). Knit to marked st. Purl marked st. Knit to end of row.

2nd row: Knit to marked st. M1. Knit marked st. M1. Knit to end of row.

3rd row: As 1st row.

4th row: Knit.

Rep last 4 rows 10 times more. 36 sts.

Place marker at each end of last inc row.

Next row: (WS). Knit to marked st. Purl marked st. Knit to end of row.

Next row: Knit.

Rep last 2 rows until work from beg measures **13½ (13½-13½-14½-14½-14½)" [34.5 (34.5-34.5-37-37-37) cm]**, when slightly stretched, ending with a WS row. Place marker at each end of last row to mark center back.

Cont even until work from center back marker measures same length as first side to last inc marker, ending with a WS row.

1st row: Knit to 2 sts before marked st. ssk. Knit marked st. K2tog. Knit to end of row.

2nd row: Knit to marked st. Purl marked st. Knit to end of row.

3rd row: Knit.

4th row: As 2nd row.

Rep last 4 rows 10 times more. 14 sts rem.

1st row: Knit to 2 sts before marked st. ssk. Knit marked st. K2tog. Knit to end of row.

2nd row: Knit to marked st. Purl marked st. Knit to end of row.

Rep last 2 rows 3 times more. 6 sts rem. Cast off.

Fold Collar in half lengthwise, noting marked st 'ridge' runs along top edge of Collar. Sew long edges of Collar tog. Sew long edge of Collar to neck edge sewing cast on and cast off edges across top edges of Left and Right Front edgings and matching center back marker on Collar to center back neck edge. Sew side and sleeve seams.

Sew Sleeve Tabs in position on WS of center of Sleeve along last row of ribbing. Fold cuff to RS. Sew toggle and sleeve tab in position as shown in picture.

Sew 5 sets of snap fasteners in position on WS of front edgings, evenly spaced. Work 'X' st embroidery on RS of Right Front edging above each snap as shown in picture.



Patons

Canadiana DECOR

Classic Wool

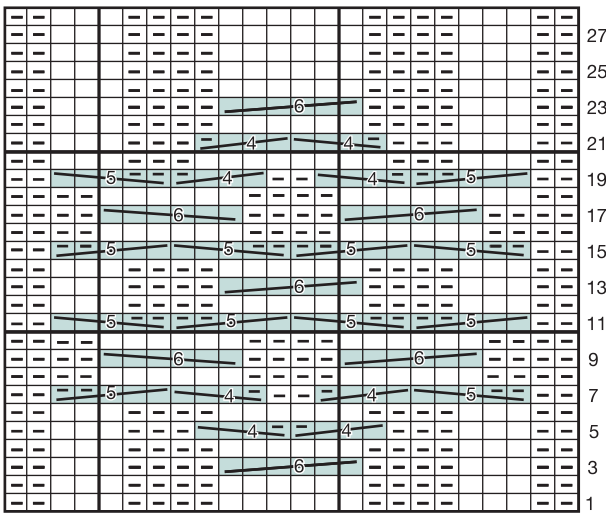
P.O. Box 40, Listowel ON N4W 3H3

www.patonsyarns.com



CABLES AND COLLAR CARDIGAN 4

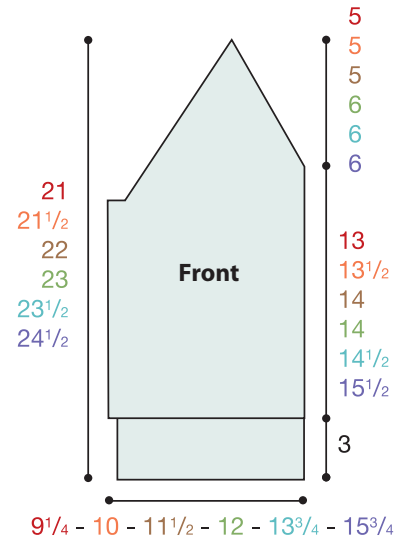
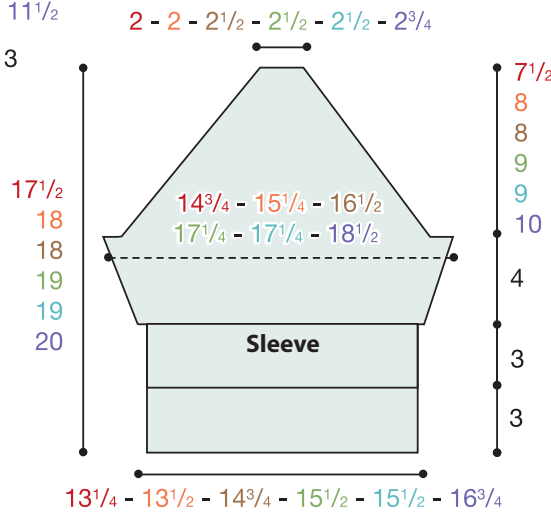
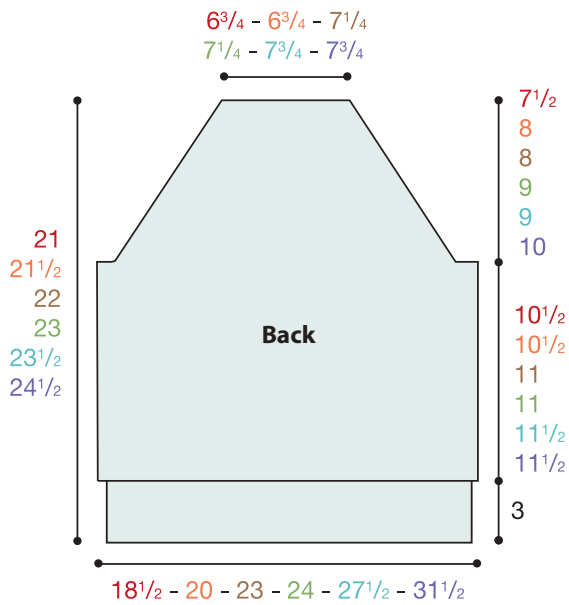
Cable Panel



Start Here

Key

- = Knit on RS rows.
Purl on WS rows.
- = Purl on RS rows.
Knit on WS rows.
- = C6B
- = C6F
- = T4B
- = T4F
- = T5B
- = T5F



Patons®

Canadiana DECOR

Classic Wool

P.O. Box 40, Listowel ON N4W 3H3

www.patonsyarns.com



CABLES AND COLLAR CARDIGAN