

Patons® Classic Wool



Patons® Classic Wool
NAVAJO CARDIGAN

MATERIALS

Sizes
XS (S-M-L-XL-1XL-2XL-3XL)
Patons® Classic Wool
(100 g/3.5 oz)
Main Color MC
(202 Aran)
8 (8-10-10-12-14-14-15) balls
Contrast A
(227 Taupe)
2 (2-2-2-2-2-3-3) balls
Contrast B
(240 Leaf Green)
2 (2-2-2-2-2-2-2) balls
Contrast C
(206 Russet)
2 (2-2-2-2-2-2-2) balls
Contrast D
(204 Old Gold)
2 (2-2-2-2-2-2-2) balls

Size 7 mm (U.S. 10½) knitting needles **or size needed to obtain tension.** 2 st holders. 5 buttons.

With MC, rep last 2 rows once, inc 1 st at center of last row. 54 (58-60-64-70-80-86-94) sts.

Proceed as follows:
****1st row:** (RS). With B, knit.
2nd row: With C, purl.
3rd row: With C, knit.
4th row: With D, purl.

Work Chart I in stocking st to end of chart, reading **knit** rows from **right** to left and **purl** rows from **left** to right, noting 8 st rep will be worked 6 (7-7-8-8-10-10-11) times.

Next row: (RS). With D, knit.
Next row: With C, purl.
Next row: With C, knit.
Next row: With B, purl.
With MC, work 2 rows in stocking st. With A, work 2 rows in stocking st.**

With MC, cont in stocking st until work from beg measures 15¼ ins [36 cm], ending with RS facing for next row. Rep from ** to ** once more.

Raglan shaping: With MC, cast off 3 (3-4-4-6-7-7-8) sts beg next 2 rows. 48 (52-52-56-58-66-72-78) sts.

Sizes XS, S, M, L, XL and 1X only:
Next row: (RS). K2. K2tog. Knit to last 4 sts. Sl1. K1. pss0. K2.
Work 3 rows even.
Rep last 4 rows 2 (1-1-1-1-0) time(s) more. 42 (48-48-52-54-64) sts.

All Sizes: Next row: (RS). K2. K2tog. Knit to last 4 sts. Sl1. K1. pss0. K2.
Next row: Purl.
Rep last 2 rows 10 (13-13-14-14-19-21-20) times more. 20 (20-20-22-24-24-28-36) sts.

Sizes 2X and 3X only: 1st row: (RS). K2. K2tog. Knit to last 4 sts. Sl1. K1. pss0. K2.
2nd row: P2. P2togtbl. Purl to last 4 sts. P2tog. P2.
Rep last 2 rows (0-2) times more. 24 sts.

SIZES

Bust measurement

| | | |
|-------------|-----------|------------------|
| Extra-Small | 30 ins | [81 cm] |
| Small | 32-34 ins | [81-86.5 cm] |
| Medium | 34-36 ins | [91-96.5 cm] |
| Large | 38-40 ins | [101.5-106.5 cm] |
| Extra-Large | 42-44 ins | [112-117 cm] |
| 1XL | 46-48 ins | [122-127 cm] |
| 2XL | 50-52 ins | [132-137 cm] |
| 3XL | 54-56 ins | [142-147.5 cm] |

Finished bust

| | | |
|-------------|---------|------------|
| Extra-Small | 34 ins | [86.5 cm] |
| Small | 36½ ins | [92.5 cm] |
| Medium | 38 ins | [96.5 cm] |
| Large | 40½ ins | [101.5 cm] |
| Extra-Large | 44 ins | [112 cm] |
| 1XL | 51 ins | [129.5 cm] |
| 2XL | 54½ ins | [138.5 cm] |
| 3XL | 60 ins | [152.5 cm] |

TENSION

12½ sts and 18 rows = 4 ins [10 cm] in stocking st using 2 strands of yarn.

INSTRUCTIONS

The instructions are written for smallest size. If changes are necessary for larger sizes the instructions will be written thus ().

Note: Cardigan is worked with 2 strands of yarn throughout.

BACK

With 2 strands of MC, cast on 53 (57-59-63-69-79-85-93) sts.

*****1st row:** (RS). K1. *P1. K1. Rep from * to end of row.

2nd row: P1. *K1. P1. Rep from * to end of row.

With A, rep last 2 rows once.***

All Sizes: Cast off.

Pockets (make 2)

With 2 strands of MC, cast on 16 (**16-16-16-20-20-20**) sts.

Proceed in stocking st until work from beg measures 5 ins [12.5 cm], ending with RS facing for next row.

Leave all sts on a st holder.

LEFT FRONT

With 2 strands of MC, cast on 27 (**29-29-31-35-39-43-47**) sts.

Work from *** to ***, as given for Back.

With MC, rep last 2 rows once, inc 0 (**0-1-1-0-1-0-0**) st at center of last row. 27 (**29-30-32-35-40-43-47**) sts.

Work from ** to ** as given for Back working Chart II instead of Chart I and noting 8 st rep of Chart II will be worked 3 (**3-3-4-4-5-5-5**) times.

With MC, cont even until work from beg measures 9 ins [23 cm], ending with RS facing for next row.

Place Pocket: Next row: With MC, K6 (**8-9-11-13-14-15-17**). K16 (**16-16-16-20-20-20**) from pocket st holder. Slip next 16 (**16-16-16-16-20-20-20**) sts onto a st holder. Knit to end of row.

Next row: Purl.

Cont even until work from beg measures 15¼ ins [36 cm], ending with RS facing for next row.

Rep from ** to ** as given for Back (Working Chart II as before) once more.

Raglan and V- neck shaping: Next row: (RS). With MC, Cast off 3 (**3-4-4-6-7-7-8**) sts. Knit to end of row. 24 (**26-26-28-29-33-36-39**) sts.

Purl 1 row.

Sizes XS, S, M, L, XL and 1X only: **Next row:** (RS). K2. K2tog. Knit to end of row. 23 (**25-25-27-28-32**) sts. Work 3 rows even.

Sizes XS, S, M, L and XL only: **Next row:** (RS). K2. K2tog. Knit to last 2 sts. K2tog.

Work 3 rows even.

Rep last 4 rows 1 (**0-0-0-0**) time(s) more. 19 (**23-23-25-26**) sts.

Sizes 2X and 3X only: Next row: K2. K2tog. Knit to end of row.

Next row: Purl.

Rep last 2 rows (1-0) time(s) more. (**34-38**) sts.

All Sizes: Next row: (RS). K2. K2tog. Knit to last 2 sts. K2tog.

Next row: Purl.

Next row: K2. K2tog. Knit to end of row.

Next row: Purl.

Rep last 4 rows 3 (**5-5-5-5-7-7-5**) times more. 7 (**5-5-7-8-8-10-20**) sts.

Sizes XS and L only: Next row: (RS). K2. K2tog. K1. K2tog. 5 sts.

Next row: Purl.

Next row: K2. K2tog. K1. 4 sts.

Next row: Purl.

Next row: (K2tog) twice.

Next row: P2tog. Fasten off.

Sizes S and M only: Next row: (RS). K2tog. K1. K2tog. 3 sts.

Next row: Purl.

Next row: K2tog. K1. 2 sts.

Next row: P2tog. Fasten off.

Sizes XL and 1X only: Next row: (RS). (K2. K2tog) twice. 6 sts.

Next row: Purl.

Next row: K2. K2tog. K2. 5 sts.

Next row: Purl.

Next row: K2tog. K1. K2tog. 3 sts.

Next row: Purl.

Next row: K2tog. K1. 2 sts.

Next row: P2tog. Fasten off.

Sizes 2X and 3X only: 1st row: (RS).

K2. K2tog. Knit to end of row.

2nd and alt rows: Purl.

3rd row: K2. K2tog. Knit to last 2 sts. K2tog.

5th row: As 1st row.

6th row: Purl.

Rep last 6 rows (0-2) times more. (**6-8**) sts.

Next row: (RS). K2. K2tog. K(2-4). (5-7) sts.

Next row: Purl.

Next row: K(1-2). K2tog. K(0-1). K2tog. (3-5) sts.

Next row: Purl.

Size 2X only: (RS). K2tog. K1. 2 sts.

Next row: P2tog. Fasten off.

Size 3X only: Next row: K1. (K2tog) twice. 3 sts.

Next row: P1. P2tog.

Next row: K2.

Next row: P2tog. Fasten off.

RIGHT FRONT

With MC, cast on 27 (**29-29-31-35-39-43-47**) sts.

Work from *** to ***, as given for Back.

With MC, rep last 2 rows once, inc 0 (**0-1-1-0-1-0-0**) st(s) at center of last row. 27 (**29-30-32-35-40-43-47**) sts.

Work from ** to ** as given for Back working Chart III instead of Chart I and noting 8 st rep will be worked 3 (**3-3-4-4-5-5-5**) times.

With MC, cont even until work from beg measures 9 ins [23 cm], ending with RS facing for next row.

Place Pocket: Next row: With MC, K5 (**5-5-5-6-6-8-10**). K16 (**16-16-16-20-20-20**) from pocket st holder. Slip next 16 (**16-16-16-16-20-20-20**) sts onto a st holder. Knit to end of row.

Next row: Purl.

Cont even until work from beg measures 15¼ ins [36 cm], ending with RS facing for next row.

Rep from ** to ** as given for Back (working Chart III as before) once more.

Next row: (RS). With MC, knit.

Raglan and V-neck shaping: Next row: Cast off 3 (3-4-4-6-7-7-8) sts. Purl to end of row. 24 (26-26-28-29-33-36-39) sts.

Sizes XS, S, M, L, XL and 1X only:

Next row: (RS). Knit to last 4 sts. Sl1. K1. pssso. K2. 23 (25-25-27-28-32) sts.

Work 3 rows even.

Sizes XS, S, M, L and XL only:

Next row: (RS). Sl1. K1. pssso. Knit to last 4 sts. Sl1. K1. pssso. K2.

Work 3 rows even.

Rep last 4 rows 1 (0-0-0-0) time(s) more. 19 (23-23-25-26) sts.

Sizes 2X and 3X only: Next row:

Knit to last 4 sts. Sl1. K1. pssso. K2.

Next row: Purl.

Rep last 2 rows (1-0) time(s) more. (34-38) sts.

All Sizes: Next row: (RS). Sl1. K1. pssso. Knit to last 4 sts. Sl1. K1. pssso. K2.

Next row: Purl.

Next row: Knit to last 4 sts. Sl1. K1. pssso. K2.

Next row: Purl.

Rep last 4 rows 3 (5-5-5-5-7-7-5) times more. 7 (5-5-7-8-8-10-20) sts.

Sizes XS and L only: Next row: (RS). Sl1. K1. pssso. K1. Sl1. K1. pssso. K2. 5 sts.

Next row: Purl.

Next row: K1. Sl1. K1. pssso. K2. 4 sts.

Next row: Purl.

Next row: (Sl1. K1. pssso) twice.

Next row: P2togtbl. Fasten off.

Sizes S and M only: Next row: (RS). Sl1. K1. pssso. K1. Sl1. K1. pssso. 3 sts.

Next row: Purl.

Next row: K1. Sl1. K1. pssso. 2 sts.

Next row: P2togtbl. Fasten off.

Sizes XL and 1X only: Next row: (RS). (Sl1. K1. pssso. K2) twice. 6 sts.

Next row: Purl.

Next row: Knit to last 4 sts. Sl1. K1. pssso. K2. 5 sts.

Next row: Purl.

Next row: Sl1. K1. pssso. K1. Sl1. K1. pssso. 3 sts.

Next row: Purl.

Next row: K1. Sl1. K1. pssso. 2 sts.

Next row: P2togtbl. Fasten off.

Sizes 2X and 3X only: 1st row: (RS).

Knit to last 4 sts. Sl1. K1. pssso. K2.

2nd and alt rows: Purl.

3rd row: Sl1. K1. pssso. Knit to last 4 sts. Sl1. K1. pssso. K2.

5th row: As 1st row.

6th row: Purl.

Rep last 6 rows (0-2) times more. (6-8) sts.

Next row: (RS). K(2-4). Sl1. K1. pssso. K2. (5-7) sts.

Next row: Purl.

Next row: K(0-1). Sl1. K1. pssso. K(1-2). Sl1. K1. pssso. (3-5) sts.

Next row: Purl.

Size 2X only: Next row: (RS). K1. Sl1. K1. pssso. 2sts.

Next row: P2togtbl. Fasten off.

Size 3X only: Next row: (Sl1. K1. pssso) twice. K1. 3 sts.

Next row: P2togtbl. P1.

Next row: K2.

Next row: P2togtbl. Fasten off.

SLEEVES

With 2 strands of MC, cast on 23 (23-23-25-25-25-27-27) sts.

Work 2 rows in (K1. P1) ribbing as given for Back.

With A, work 2 rows in (K1. P1) ribbing.

With MC, work 12 rows in (K1. P1) ribbing, inc 2 sts evenly across last row. 25 (25-25-27-27-27-29-29) sts.

Work 2 (2-2-2-4-4-4-4) rows in stocking st.

Sizes XS, S, M, L, XL and 1X only:

Proceed in stocking st, inc 1 st each end of needle on 5th (1st-1st-1st-1st-1st) and every following 4th row to 35 (37-39-39-43-53) sts.

Sizes 2X and 3X only: With MC, proceed in stocking st, inc 1 st each end of needle on first and every following alt row to (35-43) sts, then every following 4th row from previous inc to (57-61) sts.

Sizes XS, S, M, L and XL only: Inc 1 st each end of needle on every following 6th row to 41 (43-45-47-49) sts.

All Sizes: Work 5 (5-5-5-5-3-3-3) rows evenly across 41 (43-45-47-49-53-57-61) sts.

Proceed in pat as follows

1st row: With A, inc 1 st in first st. Knit to last 2 sts. Inc 1 st in next st. K1. 43 (45-47-49-51-55-59-63) sts.

2nd row: With A, purl.

3rd row: With MC, knit.

4th row: With MC, purl.

5th row: With B, knit.

6th row: With C, purl.

7th row: With C, inc 1 st in first st. Knit to last 2 sts. Inc 1 st in next st. K1. 45 (47-49-51-53-57-61-65) sts.

8th row: With D, purl.

Work Chart IV in stocking st noting 8 st rep will be worked 5 (5-5-6-6-7-8-8) times, AT SAME TIME, inc 1 st each end of needle on next and following 6th row. 49 (51-53-55-57-61-65-69) sts.

Next row: (RS). With D, knit.

Next row: With C, purl.

Next row: With C, knit.

Next row: With B, purl.
With MC, work 2 rows in stocking st.
With A, work 2 rows in stocking st.

Raglan shaping: With MC, cast off 3 (3-4-4-6-7-7-8) sts beg next 2 rows. 43 (45-45-47-45-47-51-53) sts.

Sizes XL, 1X, 2X and 3X only: Next row: (RS). K2. K2tog. Knit to last 4 sts. Sl1. K1. pssso. K2.
Work 3 rows even.
Rep last 4 rows (0-2-1-1) time(s) more. (43-41-47-49) sts.

All Sizes: Next row: (RS). K2. K2tog. Knit to last 4 sts. Sl1. K1. pssso. K2.
Next row: Purl.
Rep last 2 rows to 11 sts.

Next row: (RS). K2. K2tog. Knit to last 4 sts. Sl1. K1. pssso. K2.
Next row: P2. P2tog. Purl to last 4 sts. P2togtbl. P2. 7 sts.
Cast off.

FINISHING

Pin garment pieces to measurements and cover with a damp cloth, leaving cloth to dry.

Buttonband and Collar: Sew raglan seams. With 2 strands of MC, cast on 9 sts.

1st row: (RS). K2. (P1. K1) 3 times. K1.
2nd row: (K1. yf. Sl1P. yb) 4 times. P1.
Rep last 2 rows until work from beg measures length to fit from cast on edge to beg of V-neck shaping, when slightly stretched, sewing in place as you work and ending with RS facing for next row.

Collar shaping: 1st row: (RS). Inc 1 st in first st. Pat to last st. K1.
2nd row: K1. Knit all knit sts and slip all purl sts as they appear, taking inc sts into pat.

Rep last 2 rows 4 (7-7-10-10-10-10-12) times more. 14 (17-17-20-20-20-20-22) sts.

1st row: (RS). Inc 1 st in first st. Pat to last st. K1.
2nd row: K1. Pat to last 2 sts. Inc 1 st in next st. P1.
3rd row: As 1st row.
4th row: Work even in pat.
Rep last 4 rows 4 (3-3-2-2-2-2-2) times more. 29 (29-29-29-29-29-29-31) sts. Place marker at end of last row.

Cont even in pat until work from marker measures 5 (5-5-5¼-5½-5½-5½-5½) ins [12.5 (12.5-12.5-13-14-14-14-14) cm], ending with RS facing for next row. Cast off in pat.

Place 5 markers on left front edge for buttons, having first button at last row before beg of Collar shaping and rem 4 markers down 4 ins [10 cm] apart.

Work buttonholes on Right Front to correspond to button markers as follows:

Next row: (RS). K2. P1. K1. Cast off 2 sts. P1. K2.
Next row: Work in pat, casting on 2 sts over cast off sts.

Buttonhole Band and Collar: With 2 strands of MC, cast on 9 sts.

1st row: (RS). K2. (P1. K1) 3 times. K1.
2nd row: P1. (yf. Sl1P. yb. K1) 4 times.
Rep last 2 rows until work from beg measures length to fit from cast on edge to beg of V-neck shaping, when slightly stretched, sewing in place as you work, working buttonholes to correspond to markers and ending with RS facing for next row.

Collar shaping: 1st row: (RS). Pat to last 2 sts. Inc 1 st in next st. K1.
2nd row: P1. Knit all knit sts and slip all purl sts as they appear, taking inc sts into pat, to last st. K1.

Rep last 2 rows 4 (7-7-10-10-10-10-12) times more.
14 (17-17-20-20-20-20-22) sts.

1st row: (RS). Pat to last 2 sts. Inc 1 st in next st. K1.
2nd row: Inc 1 st purlways in first st. Pat to last st. K1.
3rd row: As 1st row.
4th row: Work even in pat.
Rep last 4 rows 4 (3-3-2-2-2-2-2) times more. 29 (29-29-29-29-29-29-31) sts. Place marker at end of last row.

Cont even in pat until work from marker measures 5 (5-5-5¼-5½-5½-5½-5½) ins [12.5 (12.5-12.5-13-14-14-14-14) cm], ending with RS facing for next row. Cast off in pat.

Sew back Collar seam, reversing seam for turn back.

Sew side and sleeve seams. Sew on buttons to correspond to buttonholes. Sew pocket lining in position to WS.

Tie Belt: With 2 strands of MC, cast on 9 sts.

1st row: (RS). K2. (P1. K1) 3 times. K1.
2nd row: P1. (yf. Sl1P. yb. K1) 4 times.
Rep last 2 rows until work measures 65 ins [165 cm], ending with RS facing for next row. Cast off in pat.

Belt Loops: (Make 2). With 2 strands of MC, cast on 10 sts. Cast off leaving a long end. Sew loops in position.

Pocket Border: With RS of work facing and MC, K16 (16-16-16-16-20-20-20) from pocket st holder, dec 1 st at center. 15 (15-15-15-15-19-19-19) sts. Work 2 rows in (K1. P1) ribbing. Cast off in ribbing. Rep for other pocket.

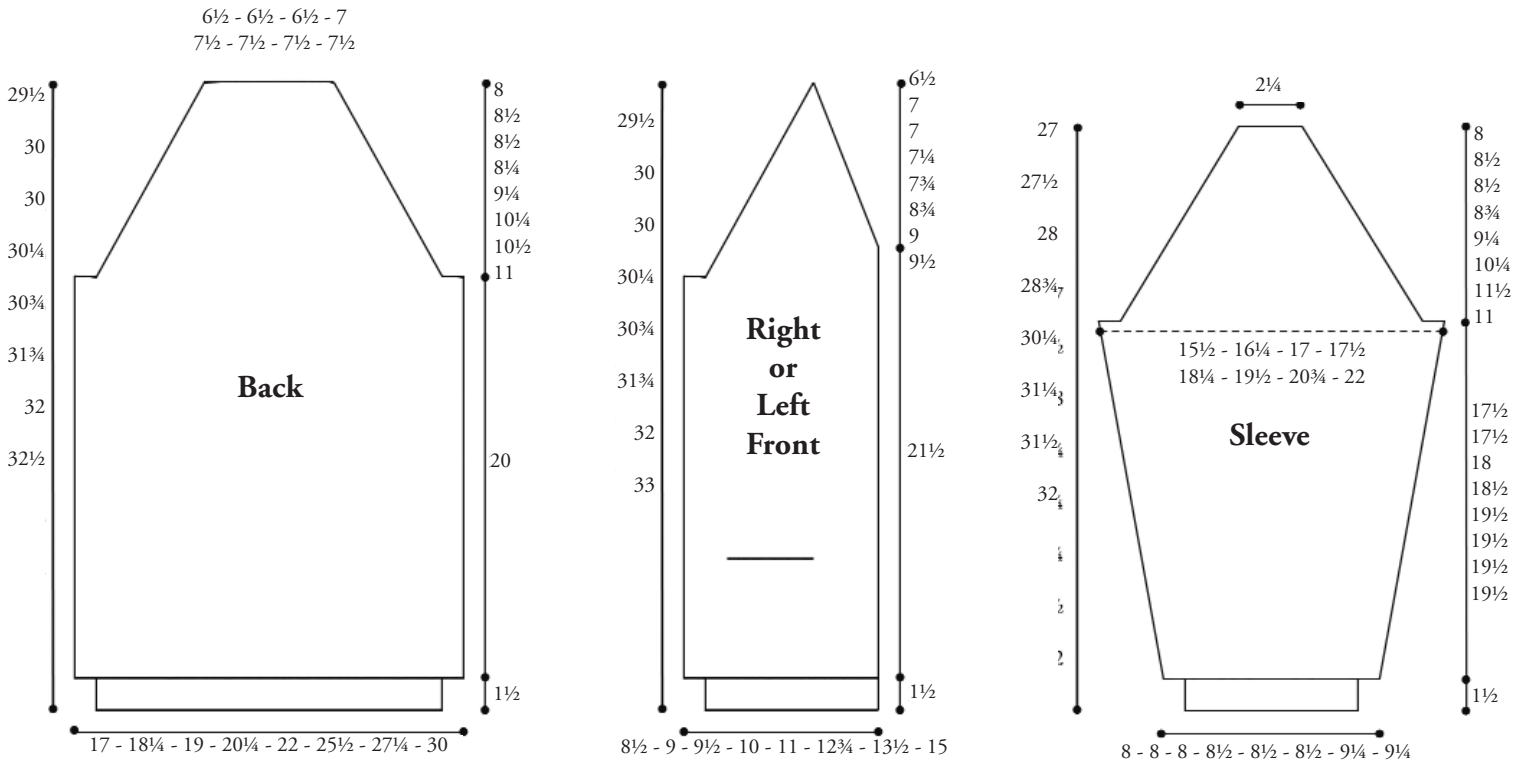


Chart I

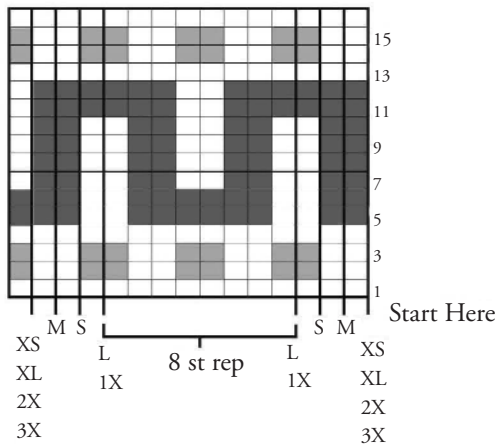
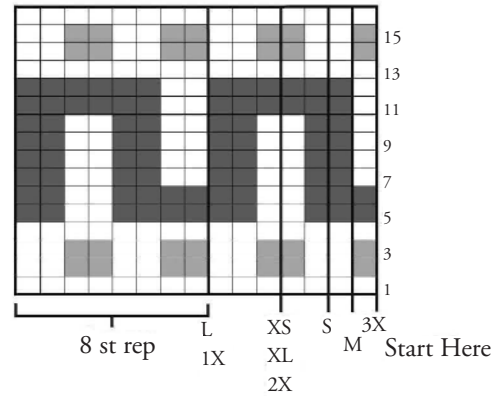


Chart II (Left Front)



Key

- = Contrast A
- = Contrast B
- = Contrast C

Chart III (Right Front)

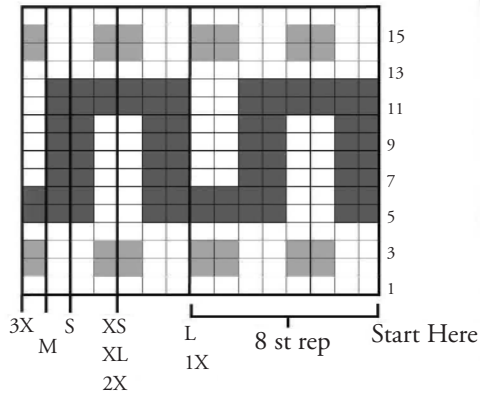
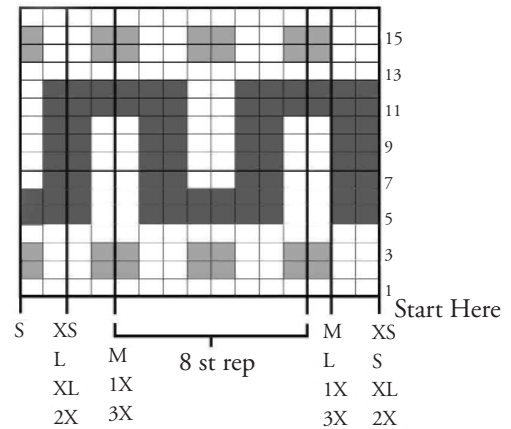


Chart IV



Patons

... a part of your life.

P.O. Box 40 Listowel ON N4W 3H3