



MATERIALS

Patons® Shetland Chunky™ (3.5 oz/100 g; 148 yds/136 m)

Sizes	XS/S	M	L	XL	2/3XL	4/5XL	
Main Color (MC) White (78006)	3	3	4	4	4	4	balls
Contrast A Oxford Grey (78046)	6	6	7	8	9	10	balls
Contrast B Black (78040)	1	1	1	1	1	1	ball
Contrast C Taupe (78022)	1	1	1	1	1	1	ball

Sizes U.S. 9 (5.5 mm) and U.S. 10 (6 mm) knitting needles **or size needed to obtain gauge.** 2 stitch holders.

ABBREVIATIONS: yarnspirations.com/abbreviations

Alt = Alternate	P = Purl	Ssk = Slip next
Approx = Approximate(ly)	P2tog = Purl next 2 stitches together	2 stitches knitwise one at a time. Pass them back onto left-hand needle, then knit through back loops together
Beg = Begin(ning)	P2togtbl = Purl next 2 stitches together through back loops	St(s) = Stitches
Cont = Continue(ity)	Rem = Remain(ing)	WS = Wrong side
Dec = Decrease(ing)	Rep = Repeat	
Inc = Increase(ing)	RS = Right side	
K = Knit		
K2tog = Knit next 2 stitches together		



INTERMEDIATE

SIZES

To fit bust measurement

Extra-Small/Small	28-34" [71-86.5 cm]
Medium	36-38" [91.5-96.5 cm]
Large	40-42" [101.5-106.5 cm]
Extra-Large	44-46" [112-117 cm]
2/3 X-Large	48-54" [122-137 cm]
4/5 X-Large	56-62" [142-157.5 cm]

Finished bust

Extra-Small/Small	36"	[91.5 cm]
Medium	40"	[101.5 cm]
Large	44"	[112 cm]
Extra-Large	48"	[122 cm]
2/3 X-Large	57"	[144.5 cm]
4/5 X-Large	65"	[165 cm]

GAUGE

15 sts and 20 rows = 4" [10 cm] in stocking st with larger needles.

**INSTRUCTIONS**

The instructions are written for smallest size. If changes are necessary for larger size(s) the instructions will be written thus (). Numbers for each size are shown in the same color throughout the pattern. When only one number is given in black, it applies to all sizes.

Note: When working from chart, wind small balls of the colors to be used, one for each separate area of color in the design. To change colors, wind the 2 colors around each where they meet, on WS, to avoid a hole. Small sections of color can be worked in duplicate st if desired.

FRONT:

With smaller needles and MC, cast on **66 (**70-78-86-106-118**) sts.

1st row: (RS). K2. *P2. K2. Rep from * to end of row.

2nd row: P2. *K2. P2. Rep from * to end of row.

Rep last 2 rows of (K2. P2) ribbing until work from beg measures 2½" [6 cm], ending on a 2nd row and inc **7** (**7-7-9-9-11**) sts evenly across last row. **73** (**77-85-95-115-129**) sts.**

Change to larger needles and beg with a knit row, proceed in stocking st until work from beg measures **12** (**12-12½-12½-13-13**)" [**30.5** (**30.5-32-32-33-33**) cm], ending on a purl row.

Place Chart: 1st row: (RS). K**11** (**13-17-22-32-39**). Knit 1st row of Chart across next 51 sts, reading row from **right** to left. Knit to end of row.

2nd row: P**11** (**13-17-22-32-39**). Purl 2nd row of Chart across next 51 sts, reading row from **left** to right. Purl to end of row. Chart is shown on page 4.

Keeping cont of chart, as placed in last 2 rows, cont even until work from beg measures **16** (**16-16½-16½-17-17**)" [**40.5** (**40.5-42-42-43-43**) cm].

Note: When 25th row of chart is complete, substitute A for MC for remainder of Front.

Shape armholes: Keeping cont of chart, cast off **4** (**5-8-10-14-14**) sts beg next 2 rows. **65** (**67-69-75-87-101**) sts.

Next row: (RS). K2. K2tog. Knit to last 4 sts. ssk. K2.

Next row: P2. P2togtbl. Purl to last 4 sts. P2tog. P2.

Rep last 2 rows **2** (**2-2-3-4-7**) times more. **53** (**55-57-59-67-69**) sts.

Next row: (RS). K2. K2tog. Knit to last 4 sts. ssk. K2.

Next row: Purl. Rep last 2 rows **1** (**2-2-3-6-6**) time(s) more. **49** (**49-51-51-53-55**) sts.

Cont even until armhole measures **6** (**6-6½-7-7½-7½**)" [**15** (**15-16.5-18-19-19**) cm], ending on a purl row.

Shape neck: Next row: K**16** (**16-16-16-16-18**). **Turn.** Leave rem sts on a spare needle.

Next row: Purl. Dec 1 st at neck edge on next 5 rows, then on following alt rows to **10** (**10-10-10-12-12**) sts.

Cont even until armhole measures **8** (**8½-8½-9-9½-11**)" [**20.5** (**21.5-21.5-23-24-28**) cm], ending on a purl row.

Shape shoulder: Cast off **5** (**5-5-5-6-6**) sts beg next row. Work 1 row even. Cast off rem **5** (**5-5-5-6-6**) sts.

With RS facing, slip center **17** (**17-19-19-21-19**) sts onto a st holder.

Dec 1 st at neck edge on next 5 rows, then on following alt rows to **10** (**10-10-10-12-12**) sts.

Cont even until armhole measures **8** (**8½-8½-9-9½-11**)" [**20.5** (**21.5-21.5-23-24-28**) cm], ending on a knit row.

Shape shoulder: Cast off **5** (**5-5-5-6-6**) sts beg next row. Work 1 row even. Cast off rem **5** (**5-5-5-6-6**) sts.

BACK

With A, work from ** to ** as given for Front.

Change to larger needles and beg with a knit row, proceed in stocking st until work from beg measures **16** (**16-16½-16½-17-17**)" [**40.5** (**40.5-42-42-43-43**) cm], ending on a purl row.



Shape armholes: Cast off **4 (5-8-10-14-14)** sts beg next 2 rows. **65 (67-69-75-87-101)** sts.

Next row: (RS). K2. K2tog. Knit to last 4 sts. ssk. K2.

Next row: P2. P2togtbl. Purl to last 4 sts. P2tog. P2.

Rep last 2 rows **2 (2-2-3-4-7)** times more. **53 (55-57-59-67-69)** sts.

Next row: (RS). K2. K2tog. Knit to last 4 sts. ssk. K2.

Next row: Purl.

Rep last 2 rows **1 (2-2-3-6-6)** time(s) more. **49 (49-51-51-53-55)** sts.

Cont even until armhole measures **8 (8½-8½-9-9½-11)" [20.5 (21.5-21.5-23-24-28) cm]**, ending on a purl row.

Shape shoulders: Cast off 5 sts at beg of next 2 rows, then cast off 6 sts at beg of following 2 rows. Leave rem **27 (27-29-29-31-33)** sts on a st holder.

SLEEVES

With smaller needles and A, cast on **34 (34-34-34-38-38)** sts.

1st row: (RS). K2. *P2. K2. Rep from * to end of row.

2nd row: P2. *K2. P2. Rep from * to end of row.

Rep last 2 rows of (K2. P2) ribbing until work from beg measures approx 3" [7.5 cm], ending on a 2nd row.

Change to larger needles and proceed in stocking st for 8 rows.

Inc 1 st at each end of next and every following **6th (6th-4th-4th-4th-2nd)** row to **40 (42-46-50-60-70)** sts, then every following **8th (8th-6th-6th-6th-4th)** row to **50 (52-54-58-64-74)** sts.

Cont even until Sleeve from beg measures **18 (18-18-18-17½-17)" [45.5 (45.5-45.5-45.5-44.5-43) cm]**, ending on a purl row.

Shape top: Cast off **3 (4-4-5-7-9)** sts at beg of next 2 rows. **44 (44-46-48-50-56)** sts.

Next row: (RS). K2. K2tog. Knit to last 4 sts. ssk. K2.

Next row: Purl.

Rep last 2 rows to **24 (24-20-20-20-24)** sts.

Next row: (RS). ssk. Knit to last 2 sts. K2tog.

Next row: P2tog. Purl to last 2 sts. P2togtbl.

Rep last 2 rows to 8 sts. Cast off.

FINISHING

Neckband: Sew right shoulder seam. With RS facing and smaller needles, with A beg at left shoulder seam, pick up and knit **16 (16-16-16-18-18)** sts down left front neck edge. K**17 (17-19-19-21-19)** from front st holder. Pick up and knit **16 (16-16-16-18-18)** sts up right front neck edge. K**27 (27-29-29-31-33)** from back st holder. **76 (76-80-80-88-88)** sts.

1st row: (WS). P2. *K2. P2 Rep from * to end of row.

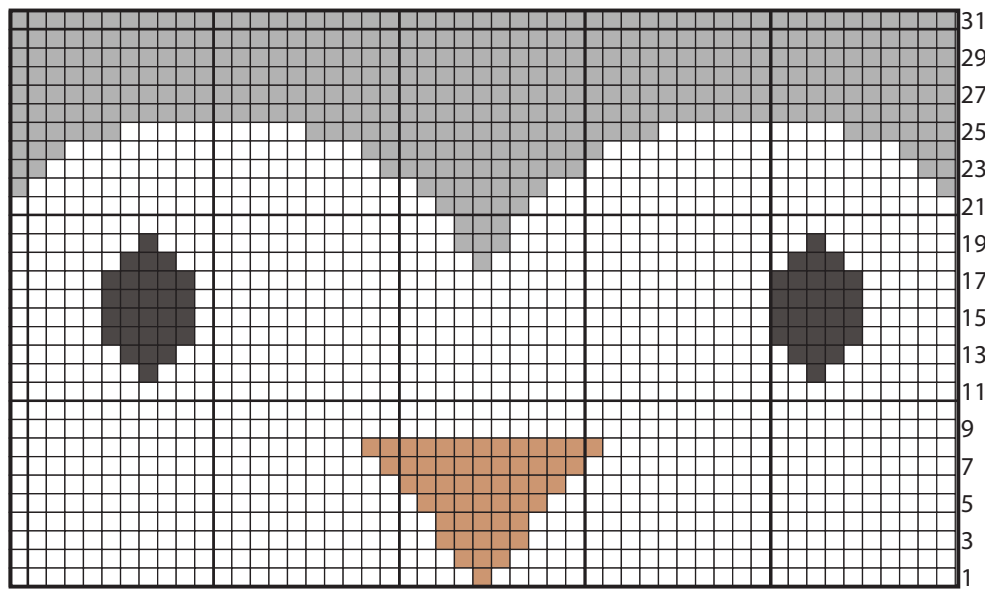
2nd row: K2. *P2. K2. Rep from * to end of row.

Rep last 2 rows once more. Cast off in ribbing.

Sew left shoulder and neckband seam. Pin center of sleeve top to shoulder seam. Sew in sleeves, fitting sleeve top into armhole. Sew sleeve and side seams.



Chart



Key

- = MC
- = A
- = B
- = C

Start Here



