



**PATONS® CLASSIC WOOL DK SUPERWASH™  
SWINGY CARDIGAN (TO KNIT)**

**SIZES**

**To fit bust measurement**

<b>Extra-Small/Small</b>	<b>28-34"</b> [ 71-86.5 cm ]
<b>Medium</b>	<b>36-38"</b> [ 91.5-96.5 cm ]
<b>Large</b>	<b>40-42"</b> [ 101.5-106.5 cm ]
<b>Extra-Large</b>	<b>44-46"</b> [ 112-117 cm ]
<b>2/3 Extra-Large</b>	<b>48-54"</b> [ 122-137 cm ]
<b>4/5 Extra-Large</b>	<b>56-62"</b> [ 142-157.5 cm ]

**Finished bust**

<b>X-Small/Small</b>	<b>37"</b> [ 94 cm ]
<b>Medium</b>	<b>39"</b> [ 99 cm ]
<b>Large</b>	<b>44"</b> [ 112 cm ]
<b>XL</b>	<b>46"</b> [ 117 cm ]
<b>2/3XL</b>	<b>54"</b> [ 137 cm ]
<b>4/5XL</b>	<b>62"</b> [ 157.5 cm ]

**MATERIALS**

**Patons® Classic Wool DK Superwash™**

(50 g/1.75 oz; 114 m/125 yds)

Sizes **XS/S M L XL 2/3XL 4/5XL**

**Main Color (MC)**

Deep Blush (12409) **17 18 19 21 22 24 balls**

**Contrast A** Aran (12008) **3 4 4 4 4 5 balls**

**Contrast B** Cork (12012) **1 2 2 2 2 3 ball(s)**

Size 4 mm (U.S. 6) circular knitting needle 30" [75 cm] long **or size needed to obtain tension.**  
Pair of size 3.75 mm (U.S. 5) knitting needles for cable edging. Cable needle. 1 button.

**GAUGE**

22 sts and 30 rows = 4" [10 cm] in stocking st with larger needles.

25 sts and 28 rows = 4" [10 cm] in Fair Isle Pat with larger needles.

**STITCH GLOSSARY**

[www.patonsyarns.com/abbreviations](http://www.patonsyarns.com/abbreviations)

- Approx** = Approximately
- Alt** = Alternate(ing)
- Beg** = Beginning
- C6B** = Slip next 3 stitches onto cable needle and leave at back of work. K3, then K3 from cable needle
- C6F** = Slip next 3 stitches onto cable needle and leave at front of work. K3, then K3 from cable needle
- C8B** = Slip next 4 stitches onto cable needle and leave at back of work. K4, then K4 from cable needle
- C8F** = Slip next 4 stitches onto cable needle and leave at front of work. K4, then K4 from cable needle
- Cont** = Continue(ity)
- Dec** = Decrease(ing)
- Inc(s)** = Increase 1 stitch by knitting into front and back of next stitch
- K** = Knit
- K2tog** = Knit next 2 stitches together
- P** = Purl
- Pat** = Pattern
- P2tog** = Purl next 2 stitches together
- P2togtbl** = Purl next 2 stitches together through back loops
- Rem** = Remaining
- Rep** = Repeat
- RS** = Right side
- Ssk** = Slip next 2 stitches knitwise one at a time. Pass them back onto left-hand needle, then knit through back loops together
- St(s)** = Stitch(es)
- Tog** = Together
- WS** = Wrong side
- Yo** = Yarn over

**INSTRUCTIONS**

**BODY**

**Note:** Body is worked in one piece to armholes.

With MC and circular needle cast on **298 (298-318-318-354-402)** sts. **Do not** join. Working back and forth across needle in rows, proceed as follows:

**1st row:** (RS). \*K2. P2. Rep from \* to last 2 sts. K2.  
**2nd row:** \*P2. K2. Rep from \* to last 2 sts. P2. Rep last 2 rows (K2. P2) ribbing twice more, inc **62 (62-64-64-72-90)** sts evenly across last row. **360 (360-382-382-426-492)** sts.

Proceed in Pat A (see Chart I on page 4) as follows:

**1st row:** (RS). P3. K2tog. yo. P2. \*K16. P2. K2tog. yo. P2. Rep from \* to last st. P1.  
**2nd and alt rows:** K3. P2. K2. \*P16. K2. P2. K2. Rep from \* to last st. K1.  
**3rd row:** P3. yo. ssk. P2. \*C8F. C8B. P2. yo. ssk. P2. Rep from \* to last st. P1.  
**5th row:** As 1st row.  
**7th row:** P3. yo. ssk. P2. \*K16. P2. yo. ssk. P2. Rep from \* to last st. P1.  
**9th, 13th and 17th rows:** As 1st row.  
**11th, 15th and 19th rows:** As 7th row.  
**20th row:** As 2nd row.  
Rep last 20 rows for Pat A 4 times more, then rep 1st to 3rd rows once more.

**Next row:** (WS). K3. P2. K2. \*P2. (P2tog. P1) 4 times. P2. K2. P2. K2. Rep from \* to last st. K1. **296 (296-314-314-350-404)** sts.

Proceed in Pat B (see Chart II on page 4) as follows:

**1st row:** (RS). P3. K2tog. yo. P2. \*K12. P2. K2tog. yo. P2. Rep from \* to last st. P1.  
**2nd and alt rows:** K3. P2. K2. \*P12. K2. P2. K2. Rep from \* to last st. K1.  
**3rd row:** P3. yo. ssk. P2. \*K12. P2. yo. ssk. P2. Rep from \* to last st. P1.  
**5th, 9th, 13th and 17th rows:** As 1st row.  
**7th, 11th and 15th rows:** As 3rd row.  
**19th row:** P3. yo. ssk. P2. \*C6F. C6B. P2. yo. ssk. P2. Rep from \* to last st. P1.  
**20th row:** As 2nd row.  
Rep last 20 rows for Pat B until work from beg measures approx 16" [40.5 cm], ending on a 19th row of pat.

**Size XS/S only: Next row:** (WS). P3. P2tog. P2. \*P2. (P2tog. P1) 3 times. P3. P2tog. P2. Rep from \* to last st. P1. 231 sts. Place marker at end of row.



P.O. Box 40, Listowel ON N4W 3H3

[www.patonsyarns.com](http://www.patonsyarns.com)



INTERMEDIATE

**Size M only: Next row:** (WS). P3. P2tog. P2. \*P2. (P2tog. P1) 3 times. P7. Rep from \* to last 19 sts. (P2tog. P1) 3 times. (P2. P2tog) twice. P2. 245 sts. Place marker at end of row.

**Size L only: Next row:** (WS). \*P5. P2tog. P6. P2tog. Rep from \* to last 14 sts. P6. P2tog. P6. 273 sts. Place marker at end of row.

**Size XL only: Next row:** (WS). \*P9. P2tog. P10. P2tog. Rep from \* to last 15 sts. P6. P2tog. P7. 287 sts. Place marker at end of row.

**Size 2/3XL only: Next row:** (WS). \*P7. P2tog. P7. Rep from \* to last 14 sts. P14. 329 sts. Place marker at end of row.

**Size 4/5XL only: Next row:** (WS). P12. \*P9. P2tog. P9. Rep from \* to last 12 sts. P12. 385 sts. Place marker at end of row.

**Note:** When working from Fair Isle charts, carry yarn not in use loosely across WS of work. The colors are never twisted around one another.

**All sizes:** Work Chart III in stocking st to end of chart *reading knit rows from right to left and purl rows from left to right*, noting 14-st rep will be worked **16 (17-19-20-23-27)** times. Rows 1 to 24 of Chart III form Fair Isle Pat.

Cont in Fair Isle pat until work from marker measures 4½" [11.5 cm], ending with a WS row.

**Divide for raglan armholes: Next row:** (RS). Pat across **56 (59-66-69-79-92)** sts. Cast off **4 (4-4-6-6-8)** sts. Pat across **111 (119-133-137-159-185)** sts (including st on needle after cast off). Cast off **4 (4-4-6-6-8)** sts. Pat to end of row. Cont on last **56 (59-66-69-79-92)** sts (Left Front).

**Left Front:** Work 1 row even in pat.

**Sizes L, XL, 2/3XL and 4/5XL only: 1st row:** (RS). K1. ssk. Pat to last 2 sts. K2tog (front edge). **2nd row:** Pat to last 3 sts. P2togtbl. P1. Rep last 2 rows **(4-2-12-14)** times more. **(51-60-40-47)** sts.

**Sizes L and XL only: 1st row:** (RS). K1. ssk. Pat to last 2 sts. K2tog. **(49-58)** sts. **2nd row:** Work even in pat.

**Sizes XS/S, M, L and XL only: 1st row:** (RS). K1. ssk. Pat to last 2 sts. K2tog (front edge). **2nd row:** Pat to last 3 sts. P2togtbl. P1. **3rd row:** As 1st row. **4th row:** Work even in pat. Rep last 4 rows **6 (6-2-2)** times more. **21 (24-34-43)** sts.

**1st row:** (RS). K1. ssk. Pat to last 2 sts. K2tog. **2nd row:** Pat to last 3 sts. P2togtbl. P1. **3rd row:** K1. ssk. Pat to end of row. **4th row:** Pat to last 2 sts. P2. Rep last 4 rows **2 (4-6-9)** times more. **9 (4-6-3)** sts.

**Size XS/S only: 1st row:** (RS). K1. ssk. Pat to last 2 sts. K2tog. **2nd row:** Work even in pat. **3rd row:** K1. ssk. Pat to end of row. **4th row:** As 2nd row. Rep last 4 rows once more. 3 sts.

**Size L only: 1st row:** (RS). K1. ssk. Pat to end of row. **2nd row:** Pat to last 3 sts. P2togtbl. P1. **3rd row:** As 1st row. **4th row:** Work even in pat. 3 sts.

**Sizes XS/S, L and XL only: 1st row:** (RS). K1. ssk. **2nd row:** P2. **3rd row:** ssk. Fasten off.

**Sizes 2/3XL and 4/5XL only: 1st row:** (RS). K1. ssk. Pat to end of row. **2nd row:** Pat to last 3 sts. P2togtbl. P1. **3rd row:** K1. ssk. Pat to last 2 sts. K2tog. **4th row:** As 2nd row. Rep last 4 rows **(1-6)** time(s) more. **(30-12)** sts

**Size 2/3XL only: 1st row:** (RS). K1. ssk. Pat to end of row. **2nd row:** Work even in pat. **3rd row:** K1. ssk. Pat to last 2 sts. K2tog. **4th row:** Pat to last 3 sts. P2togtbl. P1. Rep last 4 rows 4 times more. 10 sts.

**1st row:** (RS). K1. ssk. Pat to end of row. **2nd row:** Work even in pat. **3rd row:** As 1st row. **4th row:** Pat to last 3 sts. P2togtbl. P1. Rep last 4 rows once more. 4 sts.

**Sizes M and 2/3XL only: 1st row:** (RS). K1. ssk. K1. **2nd row:** P3. **3rd row:** K1. ssk. **4th row:** P2. **5th row:** ssk. Fasten off.

**Size 4/5XL only: 1st row:** (RS). K1. ssk. Pat to end of row. **2nd row:** Pat to last 3 sts. P2togtbl. P1. Rep last 2 rows 3 times more. 4 sts.

**1st row:** (RS). K1. ssk. K1. **2nd row:** P2togtbl. P1. **3rd row:** ssk. Fasten off.

**Back:** With WS facing, join yarn to rem sts. Pat across **111 (119-133-137-159-185)** sts (Back).

**Sizes L, XL, 2/3XL and 4/5XL only: 1st row:** (RS). K1. ssk. Pat to last 3 sts. K2tog. K1. **2nd row:** P1. P2tog. Pat to last 3 sts. P2togtbl. P1. Rep last 2 rows **(4-2-16-33)** times more. **(113-125-91-49)** sts.

**Sizes L, XL and 2/3XL only: 1st row:** (RS). K1. ssk. Pat to last 3 sts. K2tog. K1. **2nd row:** Work even in pat. **(111-123-89)** sts.

**Sizes XS/S, M, L, XL and 2/3XL: 1st row:** (RS). K1. ssk. Pat to last 3 sts. K2tog. K1. **2nd row:** P1. P2tog. Pat to last 3 sts. P2togtbl. P1. **3rd row:** As 1st row. **4th row:** P2. Pat to last 2 sts. P2. Rep last 4 rows **9 (11-10-12-6)** times more. **51 (47-45-45-47)** sts.

**1st row:** (RS). K1. ssk. Pat to last 3 sts. K2tog. K1. **2nd row:** P2. Pat to last 2 sts. P2. Rep last 2 rows **4 (2-0-0-0)** time(s) more.

**All sizes:** Cast off rem **41 (41-43-43-45-49)** sts.

**Right Front:** With WS facing, join yarn to rem sts. Pat across **56 (59-66-69-79-92)** sts (Right Front).

**Sizes L, XL, 2/3XL and 4/5XL only: 1st row:** (RS). ssk (front edge). Pat to last 3 sts. K2tog. K1. **2nd row:** P1. P2tog. Pat to end of row. Rep last 2 rows **(4-2-12-14)** times more. **(51-60-40-47)** sts.

**Sizes L and XL only: 1st row:** (RS). ssk. Pat to last 3 sts. K2tog. K1. **(49-58)** sts. **2nd row:** Work even in pat.

**Sizes XS/S, M, L and XL only: 1st row:** (RS). ssk (front edge). Pat to last 3 sts. K2tog. K1. **2nd row:** P1. P2tog. Pat to end of row. **3rd row:** As 1st row. **4th row:** Work even in pat. Rep last 4 rows **6 (6-2-2)** times more. **21 (24-34-43)** sts.

**1st row:** (RS). ssk. Pat to last 3 sts. K2tog. K1. **2nd row:** P1. P2tog. Pat to end of row. **3rd row:** Pat to last 3 sts. K2tog. K1. **4th row:** Work even in pat. Rep last 4 rows **2 (4-6-9)** times more. **9 (4-6-3)** sts.

**Size XS/S only: 1st row:** (RS). ssk. Pat to last 3 sts. K2tog. K1. **2nd row:** Work even in pat. **3rd row:** Pat to last 3 sts. K2tog. K1. **4th row:** As 2nd row. Rep last 4 rows once more. 3 sts.



P.O. Box 40, Listowel ON N4W 3H3

www.patonsyarns.com



SWINGY CARDIGAN 2 of 4

**Size L only: 1st row:** (RS). Pat to last 3 sts. K2tog. K1.

**2nd row:** P1. P2tog. Pat to end of row.

**3rd row:** As 1st row.

**4th row:** Work even in pat. 3 sts.

**Sizes XS/S, L and XL only: 1st row:** (RS). K2tog. K1.

**2nd row:** P2.

**3rd row:** K2tog. Fasten off.

**Sizes 2/3XL and 4/5XL only: 1st row:** (RS). Pat to last 3 sts. K2tog. K1.

**2nd row:** P1. P2tog. Pat to end of row.

**3rd row:** ssk. Pat to last 3 sts. K2tog. K1.

**4th row:** As 2nd row.

Rep last 4 rows (1-6) time(s) more. (30-12) sts

**Size 2/3XL only: 1st row:** (RS). Pat to last 3 sts. K2tog. K1.

**2nd row:** Work even in pat.

**3rd row:** ssk. Pat to last 3 sts. K2tog. K1.

**4th row:** P1. P2tog. Pat to end of row.

Rep last 4 rows 4 times more. 10 sts.

**1st row:** (RS). Pat to last 3 sts. K2tog. K1.

**2nd row:** Work even in pat.

**3rd row:** As 1st row.

**4th row:** P1. P2tog. Pat to end of row.

Rep last 4 rows once more. 4 sts.

**Sizes M and 2/3XL only: 1st row:** (RS). K1. K2tog. K1.

**2nd row:** P3.

**3rd row:** K2tog. K1.

**4th row:** P2.

**5th row:** K2tog. Fasten off.

**Size 4/5XL only: 1st row:** (RS). Pat to last 3 sts. K2tog. K1.

**2nd row:** P1. P2tog. Pat to end of row.

Rep last 2 rows 3 times more. 4 sts.

**1st row:** (RS). K1. K2tog. K1.

**2nd row:** P1. P2tog.

**3rd row:** K2tog. Fasten off.

## SLEEVES

With larger needle, cast on 86 sts. **Do not** join. Working back and forth across needle in rows, proceed as follows:

Work 6 rows in (K2. P2) ribbing as given for Body, ending with a 2nd row and inc 18 sts evenly across last row. 104 sts.

Proceed in pat as follows (see Chart IV on page 4):

**1st row:** (RS). P6. K2tog. yo. P2. \*K12. P2. K2tog. yo. P2. Rep from \* to last 4 sts. P4.

**2nd and alt rows:** K6. P2. K2. \*P12. K2. P2. K2. Rep from \* to last 4 sts. K4.

**3rd row:** P6. yo. ssk. P2. \*C6F. C6B. P2. yo. ssk. P2. Rep from \* to last 4 sts. P4.

**5th row:** As 1st row.

**7th row:** P6. yo. ssk. P2. \*K12. P2. yo. ssk. P2. Rep from \* to last 4 sts. P4.

**9th, 13th and 17th rows:** As 1st row.

**11th, 15th and 19th rows:** As 7th row.

**20th row:** As 2nd row.

Rep last 20 rows for pat until work from beg measures approx 9" [23 cm] ending on a 3rd row of pat.

**Sizes XS/S and M only: Next row:** (WS). P6. P2tog. P2. \*P2. (P2tog. P1) 3 times. P3. P2tog. P2. Rep from \* to last 4 sts. P4. 83 sts. Place marker at end of row.

**Sizes L and XL only: Next row:** (WS). P8. \*P2tog. P4. P2tog. P3. Rep from \* to last 8 sts. P2tog. P6. 87 sts. Place marker at end of row.

**Size 2/3XL only: Next row:** (WS). P6. P2tog. P6. \*P2tog. P5. P2tog. P6. Rep from \* to end of row. 91 sts. Place marker at end of row.

**Size 4/5XL only: Next row:** (WS). P9. P2tog. P9. \*P2tog. P8. P2tog. P9. Rep from \* to end of row. 95 sts. Place marker at end of row.

**All sizes:** Work Chart V in stocking st to end of chart *reading knit rows from right to left and purl rows from left to right*, noting 14-st rep will be worked 5 times.

Rows 1 to 24 of Chart V form Fair Isle Pat.

Cont in Fair Isle Pat until work from marker measures 4½" [11.5 cm], ending with a WS row and same row of pat as Body before raglan shaping.

**Shape raglans:** Keeping cont of pat, cast off 2 (2-2-3-3-4) sts beg next 2 rows. 79 (79-83-81-85-87) sts.

**1st row:** (RS). K1. ssk. Pat to last 3 sts. K2tog. K1.

**2nd row:** P1. P2tog. Pat to last 3 sts. P2togtbl. P1.

**3rd row:** As 1st row.

**4th row:** P2. Pat to last 2 sts. P2.

Rep last 4 rows 7 (5-4-1-0-0) time(s) more.

31 (43-53-69-79-81) sts.

**1st row:** (RS). K1. ssk. Pat to last 3 sts. K2tog. K1.

**2nd row:** P2. Pat to last 2 sts. P2.

Rep last 2 rows 8 (14-18-26-30-31) times more. 13 (13-15-15-17-17) sts.

Cast off.

## FINISHING

Pin all pieces to measurements. Cover with a damp cloth leaving cloth to dry.

Sew raglan seams.

**Left Front Cable edging:** With pair of needles, cast on 14 sts.

**1st row:** (RS). \*K2. P2. Rep from \* to last 2 sts. K2.

**2nd row:** P2. (K1. M1. K1. P2) twice. K2. P2. 16 sts.

**3rd row:** K2. C6F. C6B. K2.

**4th row:** P16.

**5th row:** P2. K12. P2.

**6th row:** K2. P12. K2.

**7th row:** K16.

**8th row:** P16.

**9th to 12th rows:** As 5th to 8th rows.

**13th and 14th rows:** As 5th and 6th rows.

Rep 3rd to 14th rows for pat until piece (when slightly stretched) measures length to fit up Left Front edge, across top of Left Sleeve and across to center back neck edge, sewing in position as you knit. Cast off in pat, dec 2 sts evenly across as you cast off.

Place marker for button ½" [1 cm] below first front dec.

**Right Front Cable edging:** Work as for Left Front Cable edging until piece (when slightly stretched) measures length to fit up Right Front edge to correspond to button marker on Left Front.

**Make buttonhole:** (RS). Pat across 5 sts. Cast off 2 sts. Pat to end of row.

**Next row:** Pat, casting on 2 sts over cast off sts. Cont in pat until piece measures length to fit up rem of Right Front, across top of Right Sleeve and across to center back neck edge, sewing in position as you knit. Cast off in pat, dec 2 sts evenly across as you cast off.

Sew cast off ends of edgings tog at center back neck edge.

Sew side and sleeve seams. Sew button in position.

  
DK SUPERWASH™  
...a part of your life.

P.O. Box 40, Listowel ON N4W 3H3

www.patonsyarns.com



INTERMEDIATE

SWINGY CARDIGAN

3 of 4

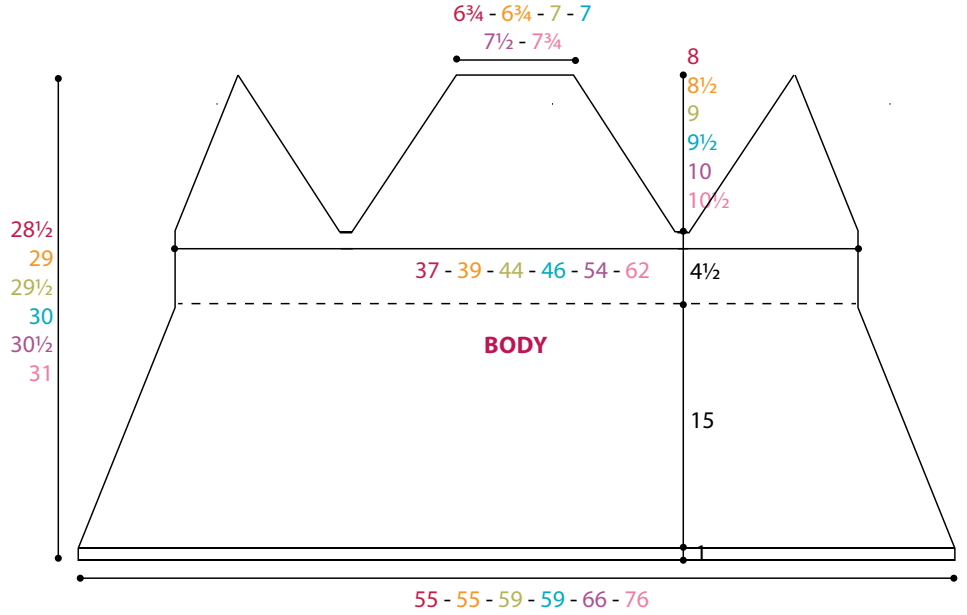
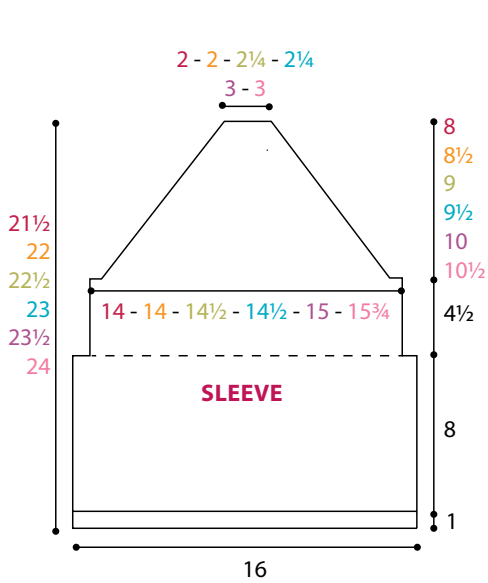


Chart I

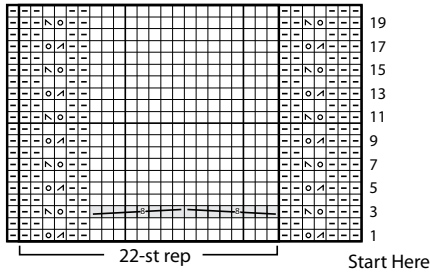


Chart II

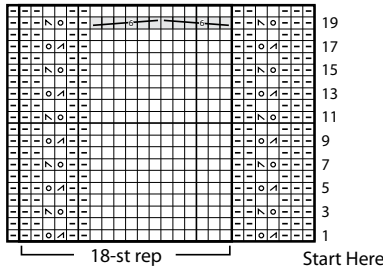


Chart IV

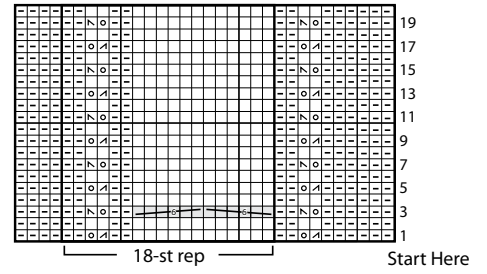


Chart I, II and IV Key

- = Knit on RS rows. Purl on WS rows.
- = Purl on RS rows. Knit on WS rows.
- = K2tog
- = ssk
- = yo
- = C8B
- = C8F
- = C6B
- = C6F

Chart III and V Fair Isle Key

- = MC
- = A
- = B

Chart III

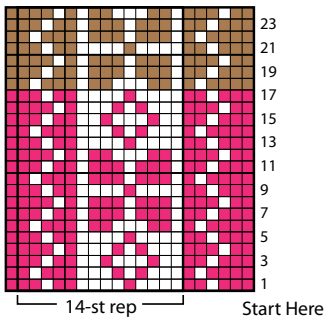
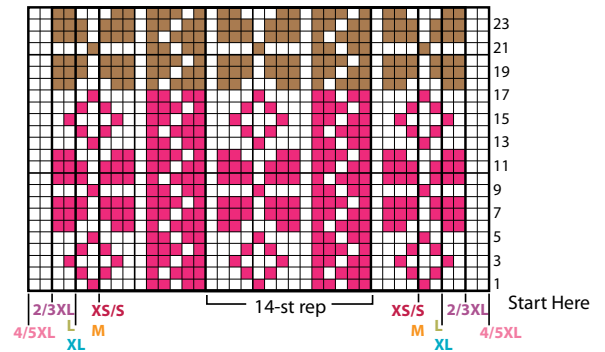


Chart V



**Patons**  
*Classic Wool*  
 DK SUPERWASH™  
*...a part of your life.*

P.O. Box 40, Listowel ON N4W 3H3

www.patonsyarns.com



INTERMEDIATE

SWINGY CARDIGAN 4 of 4