



Gayle Bunn  
Designer



KNIT | SKILL LEVEL: INTERMEDIATE

## ABBREVIATIONS

**Alt** = Alternate(ing)

**Beg** = Beginning

**C6B** = Slip next 3 stitches onto a cable needle and leave at back of work. K3, then K3 from cable needle

**C6F** = Slip next 3 stitches onto a cable needle and leave at front of work. K3, then K3 from cable needle

**Cont** = Continue(ity).

**Inc** = Increase 1 stitch by knitting into front and back of next stitch

**K** = Knit.

**K2tog** = Knit next 2 stitches together

**P** = Purl

**P2tog** = Purl next 2 stitches together

**Pat** = Pattern

**Pssso** = Pass slipped stitch over

**Rem** = Remaining

**Rep** = Repeat

**Rnd(s)** = Round(s)

**RS** = Right side

**Sl1** = Slip next stitch knitwise

**Sl1P** = Slip next stitch purlwise

**Ssk** = Slip next 2 stitches knitwise one at a time. Pass them back onto left-hand needle, then knit through back loops together

**St(s)** = Stitch(es)

**T5B** = Slip next 2 stitches onto a cable needle and leave at back of work. K3, then P2 from cable needle

**T5F** = Slip next 3 stitches onto a cable needle and leave at front of work. P2, then K3 from cable needle

**Tog** = Together

**WS** = Wrong side

## MATERIALS

Patons® Kroy Socks™ (1.75 oz /50 g;166 yds/152 m)

Sizes XS/S M L

Muslin (55008) 2 2 2 balls

Set of four size 3.25 mm (U.S. 3) double-pointed knitting needles or size needed to obtain gauge. Cable needle. Stitch marker. Yarn needle.

## SIZES

**To Fit Woman's shoe size:**  
5/6 (7/8–9/10)

## Finished Foot length

**S (5/6)** 9" [23 cm]  
**M (7/8)** 9½" [24 cm]  
**L (9/10)** 10½" [26.5 cm]

## GAUGE

28 sts and 36 rows = 4" [10 cm] in stocking st.

## INSTRUCTIONS

*The instructions are written for smallest size. If changes are necessary for larger sizes the instructions will be written thus ( ). Numbers for each size are shown in the same color throughout the pattern. When only one number is given in black, it applies to all sizes.*

**CABLE PANEL** (worked over 38 sts)  
See chart on page 3.

**1st row:** P2. (K3. P4) twice. K6. (P4. K3) twice. P2.

**2nd and alt rows:** Knit all knit sts and purl all purl sts as they appear.

**3rd row:** P2. (K3. P4) twice. C6B. (P4. K3) twice. P2.

**5th row:** P2. K3. P4. (T5F. T5B) twice. P4. K3. P2.

**7th row:** P2. T5F. (P4. C6F) twice. P4. T5B. P2.

**9th row:** P4. (T5F. T5B) 3 times. P4.

**11th row:** P6. (C6B. P4) 3 times. P2.

**13th row:** P4. (T5B. T5F) 3 times. P4.

**15th row:** P4. K3. (P4. C6F) twice. P4. K3. P4.

**17th row:** As 9th row.

**19th row:** As 11th row.

**21st row:** As 13th row.

**23rd row:** P2. T5B. (P4. C6F) twice. P4. T5F. P2.

**25th row:** P2. K3. P4. (T5B. T5F) twice. P4. K3. P2.

**27th row:** As 3rd row.

**29th and 31st rows:** As 1st row.

**33rd row:** As 3rd row.

**35th row:** As 1st row.

**36th row:** As 2nd row.

These 36 rows form Cable Panel pat.

**SOCK** (make 2 alike)

Cast on 66 sts loosely. Divide onto 3 needles (24, 18, 24). Join in rnd, placing marker on first st.

Work 10 rnds in (K3. P3) ribbing, inc 30 sts evenly across last rnd. 96 sts are now divided as (32, 32, 32) sts on 3 needles.

**1st rnd:** (P2. K3. Work 1st row of Cable Panel across next 38 sts. K3. P2) twice.

**2nd rnd:** (P2. K3. Work 2nd row of Cable Panel across next 38 sts. K3. P2) twice.

Rib Pat and Cable Panel Pat are now in position.

**Note:** While working Cable Panel Pat st placement on 3 needles will shift. Keep marker for beg of rnd constant.

Cont even until 64 rows of pat have been completed, ending on a 28th row of Cable Panel. Break yarn.

Rearrange sts if necessary to (32, 32, 32) on 3 needles.

**Arrange sts for Heel:** Slip first 16 sts of second needle onto end of first needle. 48 heel sts on 1st needle.

Divide rem 48 sts onto 2 needles and leave for instep.

With WS facing, rejoin yarn to heel sts and working back and forth across needles in rows and beg with a purl row, proceed as follows:

**Next row:** (WS). P1. (P2tog) 3 times. (P1. P2tog) 13 times. P2tog. 31 sts.

**Next row:** \*Sl1P. K1. Rep from \* to last st. K1.

**Next row:** Sl1P. Purl to end of row. Rep last 2 rows until heel measures 2½" [6 cm], ending on a RS row.

**Shape Heel: 1st row:** Sl1P. P15. P2tog. P1. Turn.

**2nd row:** Sl1P. K4. ssk. K1. Turn.

**3rd row:** Sl1P. P5. P2tog. P1. Turn.

**4th row:** Sl1P. K6. ssk. K1. Turn.

**5th row:** Sl1P. P7. P2tog. P1. Turn.

**6th row:** Sl1P. K8. ssk. K1. Turn.

**7th row:** Sl1P. P9. P2tog. P1. Turn.

**8th row:** Sl1P. K10. ssk. K1. Turn.

**9th row:** Sl1P. P11. P2tog. P1. Turn.

**10th row:** Sl1P. K12. ssk. K1. Turn.

**11th row:** Sl1P. P13. P2tog. P1. Turn.

**12th row:** Sl1P. K14. ssk. K1. Turn.

**13th row:** Sl1P. P15. P2tog. P1. Turn.

**14th row:** K18.

**Shape Instep:** With RS of work facing and 1st needle, pick up and knit 15 sts along left side of heel. With 2nd needle, work pat across 48 instep sts. With 3rd needle, pick up and knit 15 sts along other side of heel. Knit first 9 sts from heel onto end of 3rd needle. 96 sts are now divided as: 24 sts on 1st needle, 48 sts on 2nd needle and 24 sts on 3rd needle.

**1st rnd: 1st needle:** Knit to last 4 sts. K2tog. K2. **2nd needle:** Pat across. **3rd needle:** K2. ssk. Knit to end of needle.

**2nd rnd: 1st needle:** Knit. **2nd needle:** Pat across. **3rd needle:** Knit. Rep last 2 rnds until there are 78 sts divided as: 15 sts on 1st needle, 48 sts on 2nd needle and 15 sts on 3rd needle.

Cont even, keeping sts on 2nd needle in pat, until foot from picked up sts measures 6 (6½-7)" [15 (16.5-18) cm].

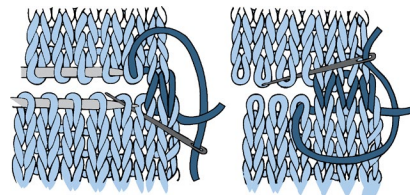
**Next rnd: 1st needle:** K15. **2nd needle:** (K2tog. K1. K2tog) 9 times. K3. **3rd needle:** K15.

60 sts are divided as: 15 sts on 1st needle, 30 sts on 2nd needle and 15 sts on 3rd needle.

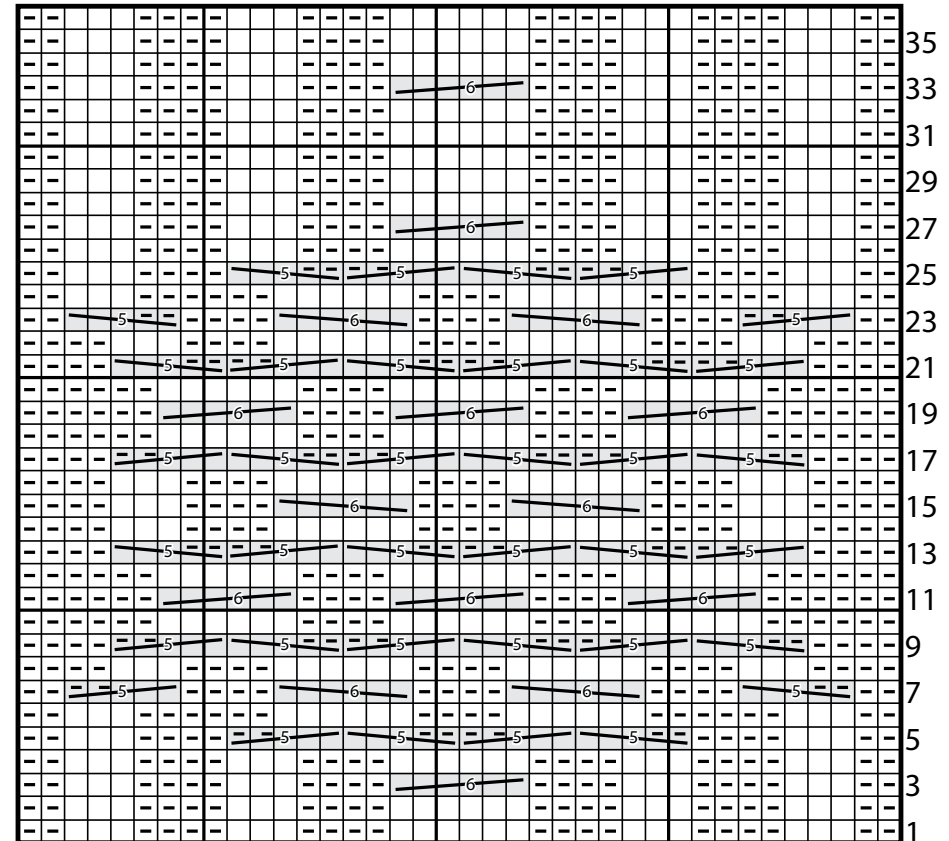
**Shape Toe: 1st rnd: 1st needle:** Knit to last 3 sts. K2tog. K1. **2nd needle:** K1. ssk. Knit to last 3 sts. K2tog. K1. **3rd needle:** K1. ssk. Knit to end of needle.

**2nd rnd:** Knit. Rep last 2 rnds until there are 16 sts divided as 4 sts on 1st needle, 8 sts on 2nd needle and 4 sts on 3rd needle.

Knit sts from 1st needle onto 3rd needle. Graft 2 sets of 8 sts tog for toe (see Diagram).



GRAFTING



Start Here

Key

- = Knit on RS rows. Purl on WS rows.
- ◻ = Knit on WS rows. Purl on RS rows.

- = T5B
- = T5F
- = C6B
- = C6F