

Patons®

KROY SOCKS



PATONS® KROY SOCKS SLIP STITCH TEXTURE

SIZES

Finished Foot Length

9 ins [23 cm]
10 ins [25.5 cm]
11 ins [28 cm]

MATERIALS

Patons® Kroy Socks (50 g/1.75 oz)

Sizes: 9 (10-11)

Main Color (MC):

(Dk Blue) 2 (2-2) balls

Contrast A: (Blue) 1 (1-2) ball(s)

Set of four size 3¼ mm (U.S. 3)
double pointed knitting needles **or**
size needed to obtain tension.

TENSION

28 sts and 40 rows = 4 ins [10 cm] in
stocking st.

INSTRUCTIONS

*The instructions are written for smallest
size. If changes are necessary for larger sizes
the instructions will be written thus ().*

With MC, cast on 66 sts **loosely**.

Divide sts into 22 sts on first, second
and third needles. Join in rnd, placing
a marker on first st.

1st rnd: *K1. P1. Rep from * around.
Rep last rnd for 1½ ins [4 cm], inc
6 sts evenly around. 72 sts.

Work Chart to end of chart,
reading rows from **right** to left and
noting 12 st rep will be worked 6
times.

Cont in Chart pat until work from beg
measures approx 8 ins [20.5 cm], end-
ing with 5th row of chart.

Divide for Instep and Heel: Slip last
12 sts from second needle onto third
needle for instep. Leave rem 36 sts for
heel.

Make heel: With WS of work facing,
join MC to 36 heel sts and proceed as
follows:

Next row: (WS). K1. P16. K2tog.
P16. K1. 35 sts.

Next row: *K1. Sl1. Rep from * to last
st. K1.

Next row: K1. Purl to last st. K1.

Rep last 2 rows until heel measures 2

(2¼-2½) ins [5 (5.5-6) cm] ending
with **WS** facing for next row.

Shape heel: 1st row: Sl1. P18. P2tog.
P1. **Turn.**

2nd row: Sl1. K4. Sl. K1. pssso. K1.
Turn.

3rd row: Sl1. P5. P2tog. P1. **Turn.**

4th row: Sl1. K6. Sl1. K1. pssso. K1.
Turn.

Cont in this manner, having 1 st more
before each dec, until there are 20 sts.

Shape Instep: With RS of work
facing, appropriate color, and first
needle, pick up and knit 14 (16-18)
sts along left side of heel. With second
needle, pat across 36 sts for instep.
With third needle, pick up and knit 14
(16-18) sts along right side of heel.
Knit first 10 sts from heel onto end of
third needle. Slip rem 10 sts from heel
onto beg of first needle. 84 (88-92) sts
are now divided as 24 (26-28) sts on
first needle, 36 sts on second needle
and 24 (26-28) sts on third needle.

1st rnd: 1st needle: With appropriate
color, knit to last 4 sts. K2tog. K2.

2nd needle: Pat across 36 sts. **3rd
needle:** With appropriate color, K2.
Sl1K. K1. pssso. Knit to end of needle.

2nd rnd: 1st needle: With appropriate
color, knit. **2nd needle:** Pat across
36 sts. **3rd needle:** With appropriate
color, knit.

Rep last 2 rnds until there are 60 sts
divided as 12 sts on first needle, 36 sts
on second needle and 12 sts on third
needle.



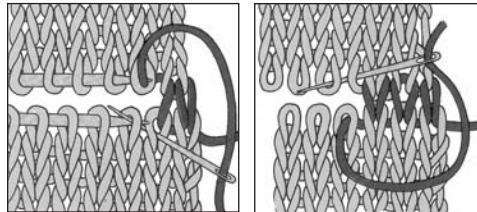
ABBREVIATIONS: www.patonsyarns.com/glossary

Cont in pat as established until foot from picked up sts at heel measures 5½ (6-7) ins [14 (15-18) cm].

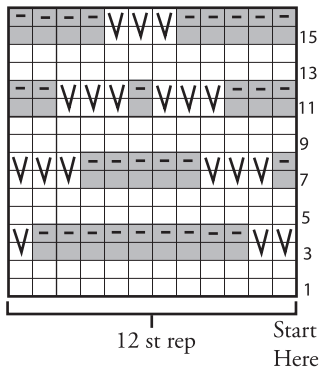
Rearrange sts for toe as follows: Slip last 3 sts from 2nd needle onto beg of 3rd needle. Slip first 3 sts from 2nd needle onto end of first needle. Sts are now divided as 15 sts on 1st needle, 30 sts on 2nd needle, and 15 sts on 3rd needle.

Shape toe: 1st rnd: 1st needle: With appropriate color, knit to last 3 sts. K2tog, K1. **2nd needle:** K1. Sl1K. K1. pssso. Pat to last 3 sts. K2tog, K1. **3rd needle:** With appropriate color, K1. Sl1K. K1. pssso. Knit to end of needle. **2nd rnd: 1st needle:** With appropriate color, knit. **2nd needle:** K2. Pat to last

2 sts. K2. **3rd needle:** With appropriate color, knit. Rep last 2 rnds until there are 20 sts divided as 5 sts on first needle, 10 sts on second needle and 5 sts on third needle. Slip sts on first needle onto third needle. Graft 2 sets of 10 sts tog for toe.



Chart



Key

- = With MC, knit.
- = With A, knit.
- = With A, purl.
- = **1st row:** With MC, Sl1P.
2nd row: With MC, Sl1P.



... a part of your life.

P.O. Box 40, Listowel ON N4W 3H3