



Nicole Winer  
Designer



KNIT 1 SKILL LEVEL: INTERMEDIATE

## ABBREVIATIONS

**Alt** = Alternate(ing)

**Approx** = Approximately

**Beg** = Beginning

**Cont** = Continue(ity)

**Dec** = Decrease(ing)

**Inc** = Increase(ing)

**K** = Knit

**K2tog** = Knit next 2 stitches together

**P** = Purl

**Pat** = Pattern

**Rem** = Remaining

**Rep** = Repeat(s)

**RS** = Right side

**Ssk** = Slip next 2 stitches knitwise one at a time. Pass them back onto left-hand needle, then knit through back loops together.

**St(s)** = Stitch(es)

**Yo** = Yarn over

**WS** = Wrong side

## MATERIALS

Patons® Kroy Socks™ (50 g/1.75 oz; 152 m/166 yds)

Seashell (57703)

**10 balls or 1490 m/1629 yds**

Size U.S. 6 (4 mm) Susan Bates® Silvalume® circular knitting needle 24" [60 cm] long **or size needed to obtain gauge.** Susan Bates® yarn needle.

## MEASUREMENTS

Approx 25" x 70" [63.5 x 178 cm].

## GAUGE

23 sts and 31 rows = 4" [10 cm] in stocking st.

## INSTRUCTIONS

Cast on 123 sts. **Do not** join. Working back and forth across needle in rows, proceed as follows:

**1st row:** (RS). \*K1. P1. Rep from \* to last st. K1.  
Last row forms Seed St Pat.  
Work a further 7 rows in Seed St Pat, inc 1 st in center of last row. 124 sts.

Proceed in Lace Pat as follows:

**1st row:** (RS). (K1. P1) twice. K5. \*yo. ssk. K1. (K2tog. yo) twice. K3. Rep from \* to last 5 sts. (K1. P1) twice. K1.

**2nd and alt rows:** (K1. P1) twice. K1. Purl to last 5 sts. (K1. P1) twice. K1.

**3rd row:** (K1. P1) twice. K1. \*K3. (yo. ssk) twice. K1. K2tog. yo. Rep from \* to last 9 sts. K5. (P1. K1) twice.

**5th row:** (K1. P1) twice. K3. \*(yo. ssk) 3 times. K4. Rep from \* to last 7 sts. yo. ssk. (K1. P1) twice. K1.

**7th row:** (K1. P1) twice. K2. \*(yo. ssk) 4 times. K2. Rep from \* to last 8 sts. yo. ssk. K2. (P1. K1) twice.

**9th row:** As 5th row.

**11th row:** As 3rd row.

**13th row:** As 1st row.

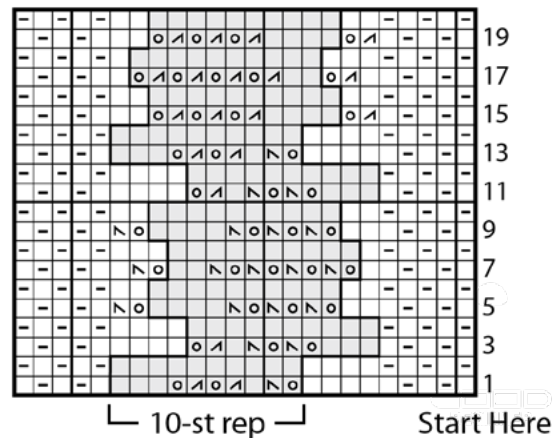
**15th row:** (K1. P1) twice. K1. K2tog. yo. \*K4. (K2tog. yo) 3 times. Rep from \* to last 7 sts. K3. (P1. K1) twice.

**17th row:** (K1. P1) twice. K2. K2tog. yo. \*K2. (K2tog. yo) 4 times. Rep from \* to last 6 sts. K2. (P1. K1) twice.

**19th row:** As 15th row.

**20th row:** As 2nd row.

These 20 rows form Lace Pat.  
Cont in Lace Pat until work from beg measures approx 69" [175.5 cm], ending on a 20th row of pat and dec 1 st at center of last row. 123 sts.  
Work 8 rows in Seed St Pat.  
Cast off in pat.



Key

- = Knit on RS rows. Purl on WS rows.
- ◻ = Purl on RS rows. Knit on WS rows.
- ⊙ = yo
- ↘ = ssk
- ⊠ = K2tog

