



Katherine Poole-Fournier
Designer



KNIT | SKILL LEVEL: INTERMEDIATE

ABBREVIATIONS

Alt = Alternate(ing)

Approx = Approximate(ly)

Beg = Beginning

Inc = Inceas(e)(es)(ing)

K = Knit

K2tog = Knit next 2 stitches together

M1 = Make 1 stitch by picking up horizontal loop lying before next stitch and knitting into back of loop

P = Purl

P2sso = Pass 2 slipped stitches over

Pat = Pattern

Rep = Repeat

RS = Right side

Sl2K = Slip next 2 stitches knitwise

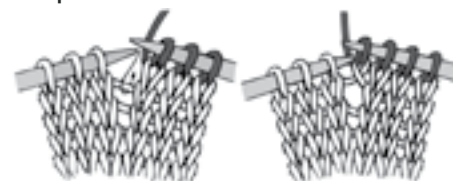
SM = Slip marker

Ssk = Slip next 2 stitches knitwise one at a time. Pass them back onto left-hand needle, then knit through back loops together.

St(s) = Stitch(es)

WS = Wrong side

Yo = Yarn over



MATERIALS

Patons® Linen™ (3.5 oz/100 g; 275 yds/251 m)

Peony (14010)

3 balls

Size U.S. 6 (4 mm) Susan Bates® Silvalume® circular knitting needle 36" [91.5 cm] long **or size needed to obtain gauge.** Susan Bates® stitch marker.

MEASUREMENTS

Approx 72" [183 cm] wide x 34" [86.5 cm] deep.

GAUGE

24 sts and 32 rows = 4" [10 cm] in stocking st.

INSTRUCTIONS

Beg at center back neck, cast on 7 sts.

1st row: (RS). K3. yo. K1. yo. K3. 9 sts.

2nd row: K3. Purl to last 3 sts. K3.

3rd row: K3. yo. K1. yo. Place marker before next st. K1. yo. K1. yo. K3. 13 sts.

4th row: As 2nd row.

5th row: K3. yo. Knit to marker. yo. K1. yo. Knit to last 3 sts. yo. K3.

6th row: As 2nd row.

Rep 5th and 6th rows, inc 4 sts on next and every following alt row until there are 125 sts, ending on a WS row.

Note: Move marker every row, noting marker is placed on needle before center st.

Proceed in Lace Pat (see chart on page 3):

1st row: K3. yo. K2tog. K2. yo. *K1. yo. K2. ssk. P1. K2tog. K2. yo.* Rep from * to * until 5 sts before marker. K1. yo. K2. ssk. yo. SM. K1. yo. K2tog. K2. yo. Rep from * to * until last 8 sts. K1. yo. K2. ssk. yo. K3. 129 sts.

2nd and alt rows: K3. Knit all knit sts and purl all purl and yo as they appear to last 3 sts. K3.

3rd row: K3. yo. P1. K2tog. K1. yo. K3. *yo. K1. ssk. P1. K2tog. K1. yo. K3.* Rep from * to * until 4 sts before marker. yo. K1. ssk. P1. yo. SM. K1. yo. P1. K2tog. K1. yo. K3. Rep from * to * until last 7 sts. yo. K1. ssk. P1. yo. K3. 133 sts.

5th row: K3. yo. K1. *P1. K2tog. yo. K5. yo. ssk.* Rep from * to * until 2 sts before marker. P1. K1. yo. SM. K1. yo. K1. Rep from * to * until last 5 sts. P1. K1. yo. K3. 137 sts.

7th row: K3. *yo. K2. P1. K2. yo. ssk. K1. K2tog.* Rep from * to * until 5 sts before marker. yo. K2. P1. K2. yo. SM. K1. Rep from * to * until last 8 sts. yo. K2. P1. K2. yo. K3. 141 sts.

9th row: K3. *yo. K3. P1. K3. yo. Sl2K. K1. p2sso.* Rep from * to * until 7 sts before marker. yo. K3. P1. K3. yo. SM. K1. Rep from * to * until last 10 sts. yo. K3. P1. K3. yo. K3. 145 sts.

10th row: As 2nd row. Rep 1st to 10th rows 9 times more. 325 sts.

Proceed in Border Pat as follows:

1st and 2nd rows: As 1st and 2nd rows of Lace Pat. 329 sts.

3rd row: K3. yo. K1. *K2tog. K1. yo. K3. yo. K1. ssk. P1.* Rep from * to * until 10 sts before marker. K2tog. K1. yo. K3. yo. K1. ssk. K1. yo. SM. K1. yo. K1. Rep from * to * until last 13 sts. K2tog. K1. yo. K3. yo. K1. ssk. K1. yo. K3. 333 sts.

4th row: As 2nd row.

5th row: K3. yo. K2. *K2tog. yo. K5. yo. ssk. P1.* Rep from * to * until 11 sts before marker. K2tog. yo. K5. yo. ssk. K2. yo. SM. K1. yo. K2. Rep from * to * until last 14 sts. K2tog. yo. K5. yo. ssk. K2. yo. K3. 337 sts.

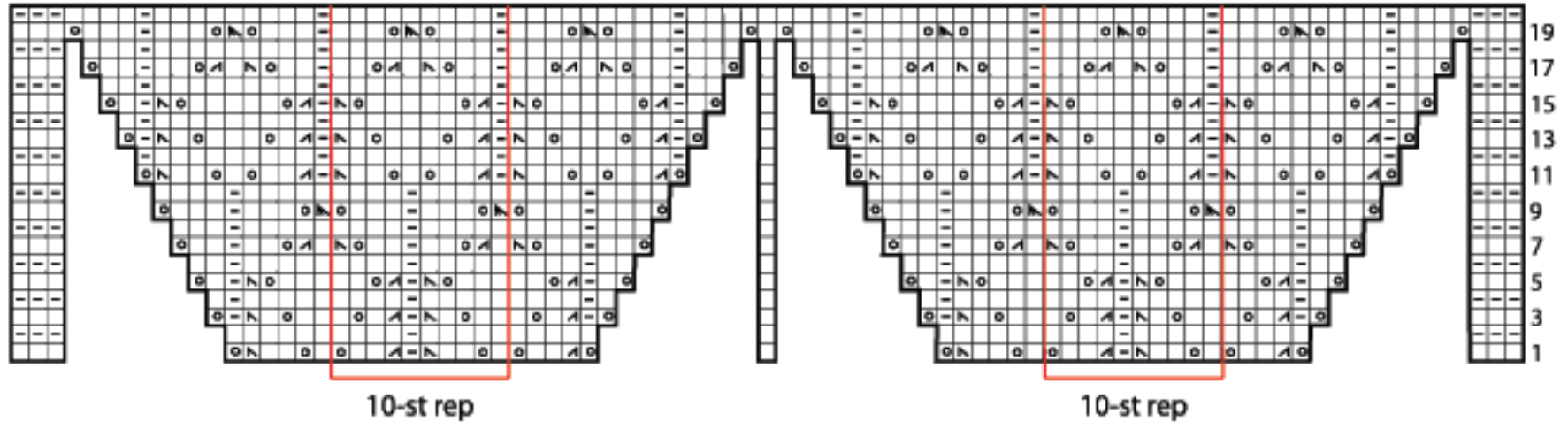
6th and alt rows: K3. Purl to last 3 sts. K3.

7th row: K3. yo. K2. ssk. *yo. K7. yo. Sl2K. K1. p2sso.* Rep from * to * until 13 sts before marker. yo. K7. yo. K2. K2tog. yo. SM. K1. yo. K2. ssk. Rep from * to * until last 14 sts. yo. K7. yo. K2tog. K2. yo. K3. 341 sts.

9th row: K3. yo. K3. ssk. *yo. K3. M1. K1. M1. K3. yo. Sl2K. K1. p2sso.* Rep from * to * until 13 sts before marker. yo. K3. M1. K1. M1. K3. yo. K1. K2tog. K1. yo. SM. K1. yo. K3. ssk. Rep from * to * until last 15 sts. yo. K3. M1. K1. M1. K3. yo. K2tog. K3. yo. K3. 415 sts.

11th row: K3. yo. K4. ssk. *yo. K4. M1. K1. M1. K4. yo. Sl2K. K1. p2sso.* Rep from * to * until 15 sts before marker. yo. K4. M1. K1. M1. K4. yo. K2tog. K2. yo. SM. K1. yo. K2. ssk. Rep from * to * until last 18 sts. yo. K4. M1. K1. M1. K4. yo. K2tog. K4. yo. K3. 483 sts.





Key

- ☐ = Knit on RS; Purl on WS
- ◻ = Purl on RS; Knit on WS.
- ⊙ = Yo
- ▤ = ssk
- ▥ = K2tog
- ▧ = Sl2k. K1. p2sso.
- ▩ = M1

