



MATERIALS

Patons® Silk Bamboo™ (2.2 oz/65 g; 102 yds/93 m)

Blush (85416)

4 balls

Size U.S. 6 (4 mm) circular knitting needle 36" [91.5 cm] long **or size needed to obtain gauge.** Stitch marker.



KNIT | SKILL LEVEL: **INTERMEDIATE**

ABBREVIATIONS

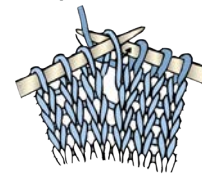
Approx = Approximate(ly)

Inc = Increase(ing)

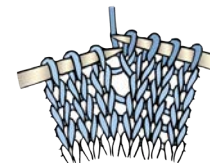
K = Knit

K2tog = Knit next 2 stitches together

M1 = Make 1 stitch by picking up horizontal loop lying before next stitch and knitting into back of loop.



P = Purl



P2tog = Purl next 2 stitches together

P2togtbl = Purl next 2 stitches together through back loops

Pat = Pattern

PM = Place marker

Rep = Repeat

RS = Right side

SM = Slip marker

Ssk = Slip next 2 stitches knitwise one at a time. Pass them back onto left-hand needle, then knit through back loops together

St(s) = Stitch(es)

WS = Wrong side

Yo = Yarn over

MEASUREMENTS

Approx 50" [127 cm] wide x 18" [45.5 cm] deep.

GAUGE

22 sts and 28 rows = 4" [10 cm] in stocking st.

INSTRUCTIONS

Cast on 9 sts. **Do not** join. Working back and forth across needle in rows, proceed as follows:

1st row: (RS) K2. yo. K2. M1. PM. K1. M1. K2. yo. K2. 13 sts.

2nd row: K2. Purl to last 2 sts. K2.

3rd row: K2. yo. Knit to marker. SM. M1. K1. M1. Knit to last 2 sts. yo. K2. 17 sts.

Rep last 2 rows, inc 4 sts each RS row, until there are 189 sts, ending on a WS row.

Proceed in Leaf Lace Pat (see Chart I):

1st row: (RS). K2. yo. K2. *ssk. yo. K1. yo. K2tog. K11. Rep from * to last 9 sts. ssk. yo. K1. yo. K2tog. K2. yo. K2.

2nd row: K2. yo. P2. *P2tog. P1. yo. P1. yo. P1. P2togtbl. P9. Rep from * to last 11 sts. P2tog. P1. yo. P1. yo. P1. P2togtbl. P2. yo. K2.

3rd row: K2. yo. K2. *ssk. K2. yo. K1. yo. K2. K2tog. K7. Rep from * to last 13 sts. ssk. K2. yo. K1. yo. K2. K2tog. K2. yo. K2.

4th row: K2. yo. P2. *P2tog. P3. yo. P1. yo. P3. P2togtbl. P5. Rep from * to last 15 sts. P2tog. P3. yo. P1. yo. P3. P2togtbl. P2. yo. K2.

5th row: K2. yo. K2. *ssk. K4. yo. K1. yo. K4. K2tog. K3. Rep from * to last 17 sts. ssk. K4. yo. K1. yo. K4. K2tog. K2. yo. K2.

6th row: K2. yo. Purl to last 2 sts. yo. K2.

7th row: K2. yo. Knit to last 2 sts. yo. K2.

8th row: As 6th row.
Rep 1st to 8th rows twice more.
237 sts.

Border: 1st to 5th rows: Work 1st to 5th rows of Leaf Lace Pat (see Chart II). 247 sts.

6th row: (WS). K2. yo. K9. *yo. K1. yo. K15. Rep from * to last 12 sts. yo. K1. yo. K9. yo. K2.

7th row: K2. yo. K11. *yo. K1. yo. K17. Rep from * to last 14 sts. yo. K1. yo. K11. yo. K2.

8th row: K2. yo. K13. *yo. K1. yo. K19. Rep from * to last 16 sts. yo. K1. yo. K13. Yo. K2.

9th row: K2. yo. K15. *yo. K1. yo. K21. Rep from * to last 18 sts. yo. K1. yo. K15. yo. K2.

Cast off loosely.

Key

- = Knit on RS rows; Purl on WS rows
- ◻ = Purl on RS rows; Knit on WS rows
- = yo
- ▤ = K2tog
- ▥ = P2tog
- ▧ = ssk
- ▨ = P2togtbl

Chart I - Leaf Lace Pat

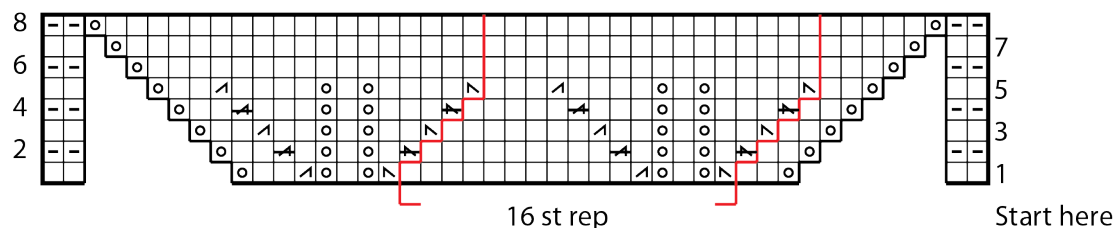


Chart II - Border Pat

