

Patons® Lace



PATONS® LACE KNIT SHAWL

MEASUREMENTS

Approx 56 ins [142 cm] wide x 22 ins [56 cm] deep at center back.

MATERIALS

Patons® Lace (85 g/3 oz; 455 m/498 yds)
(33129 Porcelain) **2 balls**

Size 4 mm (U.S. 6) circular knitting needle 36 ins [90 cm] long **or size needed to obtain tension.**

TENSION

24 sts and 32 rows = 4 ins [10 cm] in stocking st.

Beg at center back, cast on 5 sts. Working back and forth across needle in rows, proceed as follows:

1st row: K2. yo. K1 (place marker on last st for center st). yo. K2. 7 sts.

2nd and alt rows: K1. Purl to last st. K1.

3rd row: K2. (yo. K1) 3 times. yo. K2. 11 sts.

5th row: K2. yo. K3. yo. K1. yo. K3. yo. K2. 15 sts.

7th row: K2. yo. K1. (yo. K2tog) twice. yo. K1. (yo. ssk) twice. yo. K1. yo. K2. 19 sts.

9th row: K2. yo. Knit to center st. yo. Knit center st. yo. Knit to last 2 sts. yo. K2. 23 sts.

11th row: K2. yo. K1. (yo. K2tog) 4 times. yo. K1. (yo. ssk) 4 times. yo. K1. yo. K2. 27 sts.

13th row: As 9th row. 31 sts.

15th row: K2. yo. K1. (yo. K2tog) 6 times. yo. K1. (yo. ssk) 6 times. yo. K1. yo. K2. 35 sts.

17th row: As 9th row. 39 sts.

19th row: K2. yo. K1. (yo. K2tog) 8 times. yo. K1. (yo. ssk) 8 times. yo. K1. yo. K2. 43 sts.

20th row: As 2nd row.

Last 4 rows establish pat.

Cont in pat as established, inc 4 sts on every RS row and working 2 more reps of (yo. K2tog) and (yo. ssk) on each side of center st every 4th row for 70 more rows. 183 sts.

Next row: (RS). Knit.

Next row: Knit.

Next row: Purl.

Next row: Knit.

Next row: (RS). Work 1st row of Chart I across next 5 sts. (Work 1st row of Chart II across next 6 sts) 29 times. Work 1st row of Chart III across next 4 sts.

Next row: Work 2nd row of Chart III across next 4 sts. (Work 2nd row of Chart II across next 6 sts) 29 times. Work 2nd row of Chart I across next 5 sts.

Next row: Work 3rd row of Chart I across next 5 sts. (Work 3rd row of Chart II across next 6 sts) 29 times. Work 3rd row of Chart III across next 4 sts. 243 sts.

Charts I, II and III are now in position.

Keeping cont of charts, cont in pat until 58 rows of charts are complete. 423 sts.

Next row: (RS). Knit.

Next row: Knit.

Next row: Purl.

Cast off loosely knitwise (WS).



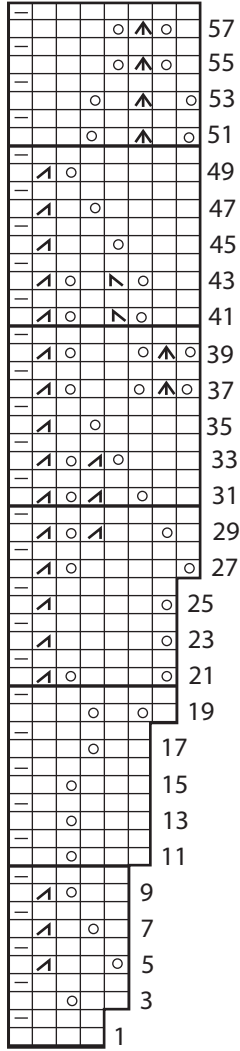
ABBREVIATIONS: www.patonsyarns.com/abbreviations

Patons®

... a part of your life.

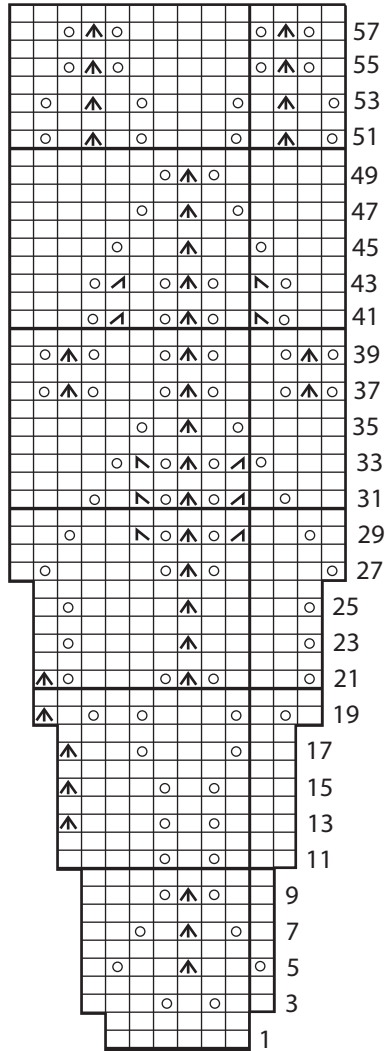
P.O. Box 40 Listowel ON N4W 3H3

Chart III



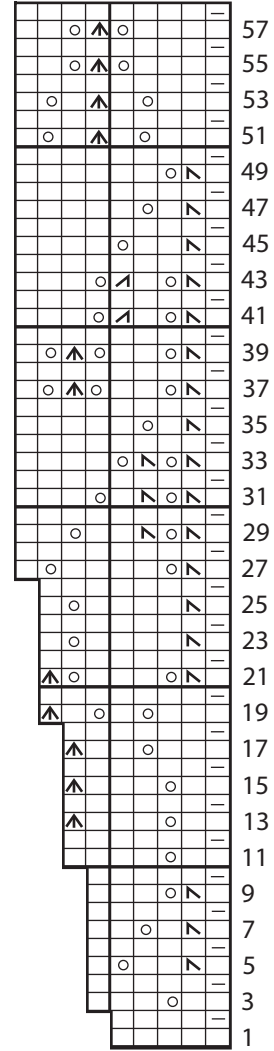
Start here

Chart II



6 st rep Start here

Chart I



Start here

Key

☐ = Knit on RS rows. Purl on WS rows.

☐ = Knit on WS rows. Purl on RS rows.

○ = yo

◻ = ssk

◻ = K2tog

◻ = S11. K2tog. pssso.