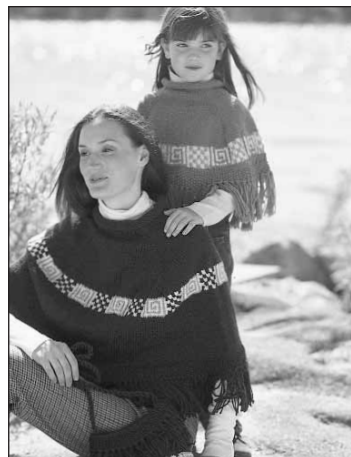


# Patons DECOR



Patons® Decor  
PERUVIAN SPIRIT



## Sizes

To fit Women 32 - 38 ins [81 - 97 cm]  
bust or Child 4 to 8 yrs old.

## Materials

Patons® Decor (100 g / 3.5 oz)

### Women's

#### Main color (MC)

(01633 Chocolate Taupe) **5 balls**

#### Contrast A

(01602 Aran) **1 ball**

#### Contrast B

(01631 Taupe) **1 ball**

#### Contrast C

(01672 Grey Heather) **1 ball**

### Child's

#### Main color (MC)

(16206 New Teal) **2 balls**

#### Contrast A

(01602 Aran) **1 ball**

#### Contrast B

(01621 Country Blue) **1 ball**

#### Contrast C

(01635 Pale Sage Green) **1 ball**

Set of four double pointed knitting needles  
size 4½ mm (U.S. 6). Size 4½ mm (U.S.  
6) circular knitting needle 90 cm long **or**  
**size needed to obtain tension.**

## Tension

20 sts and 26 rows = 4 ins [10 cm] in  
stocking st.

## Stitch Glossary

**M1** = make one st by picking up  
horizontal loop lying before next st and  
knitting into back of loop.

## Instructions

*The instructions are written for Child's size. If  
changes are necessary for Women's size the  
instructions will be written thus ( ).*

With set of four needles cast on 76 (**84**) sts.  
Divide sts into 25 (**28**) sts on first and  
second needles and into 26 (**28**) sts on third  
needle. Join in round placing a marker on  
first st.

Knit in rounds until work from beg  
measures 3 (**3½**) ins [7.5 (**9**) cm].

Proceed as follows, noting that as sts inc  
work will be moved onto circular needle:

**1st round:** Place a marker on first st and  
knit it. K18 (**20**) (back). [Place a marker  
on next st and knit it. K18 (**20**)] 3 times.

**2nd round:** (M1. Knit marked st. M1.  
Knit to next marked st) 4 times. (8 sts inc).

**3rd round:** Knit.

Rep last 2 rounds 12 (**20**) times more.  
180 (**252**) sts.

**Next round:** Knit to 3rd marked st and knit  
it. K22 (**31**). **Turn.**

Working back and forth across needle,  
proceed as follows:

**Next row:** (RS). Inc 1 st in first st. Knit to  
last st. Inc 1 st in last st. 182 (**254**) sts.

**Next row:** Purl, inc 27 (24) sts evenly across. 209 (278) sts.

Work Chart in stocking st to end of chart reading **knit** rows from **right** to left and **purl** rows from **left** to right, noting 23 st rep will be worked 9 (12) times and working first and last st with MC.

**Next row:** (RS). Knit, dec 27 (24) sts evenly across. 182 (254) sts.

Cont working in stocking st until work from beg measures 14 (19) ins [35.5 (48) cm] dec 9 (13) sts evenly across last row and ending with RS facing for next row. 173 (241) sts.

**Next row:** K1. \*P1. K1. Rep from \* to end of row.

This row forms seed st pat.

Work a further 7 rows seed st pat. Cast off in pat.

Sew back seam.

**Make fringe:** Cut 13 ins [33 cm] length of MC. Taking 3 strands tog, knot into fringe along cast off edge.

**BAG** (make Back and Front alike)

With MC and circular needle, cast on 42 sts.

**Do not join.**

Working back and forth across needle, proceed in stocking st until work from beg measures 1½ ins [3 cm] inc 4 sts evenly across last row and ending with RS facing for next row. 46 sts.

Work Chart in stocking st to end of chart reading **knit** rows from **right** to left and **purl** rows from **left** to right, noting that 23 st rep will be worked twice.

**Next row:** (RS). With MC, knit, dec 4 sts evenly across.

Cont in stocking st until work from beg measures 9 ins [23 cm] dec 5 sts evenly across last row. 37 sts.

**Next row:** K1. \*P1. K1. Rep from \* to end of row.

This row forms seed st pat.

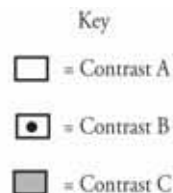
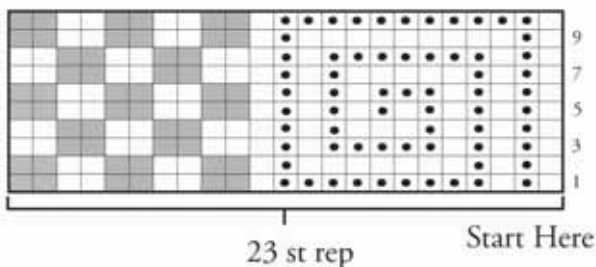
Work a further 7 rows seed st pat. Cast off in pat.

Sew bottom and side edges tog reversing seam for turn back. Fold seed st border to RS.

**Make fringe:** Cut 9 ins [23 cm] lengths of MC. Taking 3 strands tog, knot into fringe along cast off edge.

**Make twisted cord:** Cut 3 strands of yarn 140 ins [356 cm] long. With all strands tog hold one end and with someone holding other end, twist strands to the right until they begin to curl. Fold the 2 ends tog and tie in a knot so they will not unravel. The strands will now twist themselves tog. Adjust length if desired. Attach each end of cord to bag as illustrated.

**Note:** When working from Chart, use separate balls of Contrasts B and C for each area of color in the design to avoid stranding colors not in use across long areas.



**Patons**

... a part of your life.

P.O. Box 40 Listowel ON N4W 3H3