



Katherine Poole-Fournier
Designer



KNIT | SKILL LEVEL: INTERMEDIATE

ABBREVIATIONS

Approx = Approximately
K = Knit
Rep = Repeat
RS = Right side
Sl1Pwyib = Slip next stitch purlwise with yarn in back of work

Sl1Pwyif = Slip next stitch purlwise with yarn in front of work
St(s) = Stitch(es)
Tog = Together

MEASUREMENTS

Approx 11" x 90" [28 x 228.5 cm], excluding fringe.

GAUGES

16 sts and 30 rows = 4" [10 cm] in Mosaic st.
 15 sts and 26 rows = 4" [10 cm] in garter st.

INSTRUCTIONS

Mosaic Pat I Chart is shown on page 4.

1st row: (RS). With Color 1, K4. (Sl1Pwyib.K7) 4 times. Sl1Pwyib.K6.
2nd row: With Color 1, K6. (Sl1Pwyif.K7) 4 times. Sl1Pwyif.K4.
3rd row: With Color 2, K2. [(Sl1Pwyib) twice. K3. (Sl1Pwyib) twice. K1] 5 times. K1.
4th row: With Color 2, K2. [(Sl1Pwyif) twice. K3. (Sl1Pwyif) twice. K1] 5 times. K1.

MATERIALS

Patons® Norse™ (3.5 oz/100 g; 211 yds/193 m)

Contrast A Sunflower (91009)	2 balls
Contrast B Teal Blue (91012)	2 balls
Contrast C Cream (91001)	1 ball
Contrast D Emerald (91011)	1 ball
Contrast E Chocolate (91006)	1 ball

Size U.S. 10 (6 mm) knitting needles **or size needed to obtain gauge.**

5th row: With Color 1, K6. (Sl1Pwyib. K7) 4 times. Sl1Pwyib. K4.

6th row: With Color 1, K4. (Sl1Pwyif. K7) 4 times. Sl1Pwyif. K6.

7th row: With Color 2, K1. (Sl1Pwyib. K3) 10 times. Sl1Pwyib. K1.

8th row: With Color 2, K1. (Sl1Pwyif. K3) 10 times. Sl1Pwyif. K1.

9th row: With Color 1, K2. (Sl1Pwyib. K7) 5 times. K1.

10th row: With Color 1, K8. (Sl1Pwyif. K7) 4 times. Sl1Pwyif. K2.

11th row: With Color 2, K3. [(Sl1Pwyib) twice. K1. (Sl1Pwyib) twice. K3] 5 times.

12th row: With Color 2, [K3. (Sl1Pwyif) twice. K1. (Sl1Pwyif) twice] 5 times. K3.

13th row: With Color 1, K1. (K7. Sl1Pwyib) 5 times. K2.

14th row: With Color 1, K2. (Sl1Pwyif. K7) 5 times. K1.

15th row: With Color 2, K1. (Sl1Pwyib. K3) 10 times. Sl1Pwyib. K1.

16th row: With Color 2, K1. (Sl1Pwyif. K3) 10 times. Sl1Pwyif. K1. These 16 rows form Mosaic Pat I.

Mosaic Pat II Chart is shown on page 4.

1st row: With Color 1, K1. (Sl1Pwyib. K9) 4 times. Sl1Pwyib. K1.

2nd row: With Color 1, K1. (Sl1Pwyif. K9) 4 times. Sl1Pwyif. K1.

3rd row: With Color 2, K6. (Sl1Pwyib. K1) 6 times. K8.

(Sl1Pwyib. K1) 6 times. K5.

4th row: With Color 2, K6. (Sl1Pwyif. K1) 6 times. K8. (Sl1Pwyif. K1) 6 times. K5.

5th and 6th rows: As 1st and 2nd rows.

7th row: With Color 2, K2. Sl1Pwyib. K3. Sl1Pwyib. K1. Sl1Pwyib. K5. Sl1Pwyib. K1. Sl1Pwyib. [K3. Sl1Pwyib. K1. Sl1Pwyib] twice. K5. Sl1Pwyib. K1. Sl1Pwyib. K3. Sl1Pwyib. K2.

8th row: With Color 2, K2. Sl1Pwyif. K3. Sl1Pwyif. K1. Sl1Pwyif. K5. Sl1Pwyif. K1. Sl1Pwyif. [K3. Sl1Pwyif. K1. Sl1Pwyif] twice. K5. Sl1Pwyif. K1. Sl1Pwyif. K3. Sl1Pwyif. K2.

9th row: With Color 1, (K1. Sl1Pwyib) 3 times. (K3. Sl1Pwyib) 3 times. (K1. Sl1Pwyib) 4 times. (K3. Sl1Pwyib) 3 times. (K1. Sl1Pwyib) twice. K1.

10th row: With Color 1, (K1. Sl1Pwyif) 3 times. (K3. Sl1Pwyif) 3 times. (K1. Sl1Pwyif) 4 times. (K3. Sl1Pwyif) 3 times. (K1. Sl1Pwyif) twice. K1.

11th row: With Color 2, K2. (Sl1Pwyib. K7. Sl1Pwyib. K1) 4 times. K1.

12th row: With Color 2, K2. (Sl1Pwyif. K7. Sl1Pwyif. K1) 4 times. K1.

13th row: With Color 1, K5. (Sl1Pwyib) 3 times. [K7. (Sl1Pwyib) 3 times] 3 times. K5.

14th row: With Color 1, K5. (Sl1Pwyif) 3 times. [K7. (Sl1Pwyif) 3 times] 3 times. K5.

15th row: With Color 2, K2. Sl1Pwyib. K1. Sl1Pwyib. K3. [(Sl1Pwyib. K1) 4 times. K2] 3 times. Sl1Pwyib. K1. Sl1Pwyib. K2.

16th row: With Color 2, K2. Sl1Pwyif. K1. Sl1Pwyif. K3. [(Sl1Pwyif. K1) 4 times. K2] 3 times. Sl1Pwyif. K1. Sl1Pwyif. K2.

17th and 18th rows: As 13th and 14th rows.

19th and 20th rows: As 11th and 12th rows.

21st row: With Color 1, (K3. Sl1Pwyib) twice. (K1. Sl1Pwyib) 4 times. (K3. Sl1Pwyib) 3 times. (K1. Sl1Pwyib) 4 times. K3. Sl1Pwyib. K3.

22nd row: With Color 1, (K3. Sl1Pwyif) twice. (K1. Sl1Pwyif) 4 times. (K3. Sl1Pwyif) 3 times. (K1. Sl1Pwyif) 4 times. K3. Sl1Pwyif. K3.

23rd row: With Color 2, K4. (Sl1Pwyib. K1. Sl1Pwyib. K3) 3 times. K2. (Sl1Pwyib. K1. Sl1Pwyib. K3) 3 times. K1.

24th row: With Color 2, K4. (Sl1Pwyif. K1. Sl1Pwyif. K3) 3 times. K2. (Sl1Pwyif. K1. Sl1Pwyif. K3) 3 times. K1.

25th and 26th rows: As 1st and 2nd rows.

27th row: With Color 2, K2. (Sl1Pwyib. K1) 3 times. K8. (Sl1Pwyib. K1) 6 times. K8. (Sl1Pwyib. K1) 3 times. K1.

28th row: With Color 2, K2. (Sl1Pwyif. K1) 3 times. K8. (Sl1Pwyif. K1) 6 times. K8. (Sl1Pwyif. K1) 3 times. K1.

29th and 30th rows: As 1st and 2nd rows.

31st and 32nd rows: As 23rd and 24th rows.

33rd and 34th rows: As 21st and 22nd rows.

35th to 44th rows: As 11th to 20th rows.

45th and 46th rows: As 9th and 10th rows.

47th and 48th rows: As 7th and 8th rows.
These 48 rows form Mosaic Pat II.

SCARF

With A, cast on 43 sts.

**Knit 30 rows (garter st), noting the 1st row is RS.

Next row: (RS). K1. *(Sl1Pwyif) twice. K1. Rep from * to end of row.

Next row: K1. *(Sl1Pwyib) twice. K1. Rep from * to end of row. **

Note: Bars formed at front of work in last 2 rows will be used to attach fringe.

Rep from ** to ** once more.
Knit 2 rows.

Using B as Color 1 and A as Color 2, work Mosaic Pat I 3 times.

With C, work from ** to ** once.
Knit 2 rows.

Using D as Color 1 and C as Color 2, work Mosaic Pat I 3 times.

With B, work from ** to ** once.
Knit 2 rows.

Using E as Color 1 and B as Color 2, work Mosaic Pat II 4 times.
With B, knit 2 rows.

***Next row: (RS). K1. *(Sl1Pwyif) twice. K1. Rep from * to end of row.

Next row: K1. *(Sl1Pwyib) twice. K1. Rep from * to end of row.

Knit 28 rows (garter st).***

With C, knit 2 rows.

Using D as Color 1 and C as Color 2, work Mosaic Pat I 3 times.

With C, knit 2 rows.
With C, work from *** to *** once.
With A, knit 2 rows.

Using B as Color 1 and A as Color 2, work Mosaic Pat I 3 times.

With A, knit 2 rows.

****Next row: (RS). K1. *(Sl1Pwyif) twice. K1. Rep from * to end of row.

Next row: K1. *(Sl1Pwyib) twice. K1. Rep from * to end of row.

Knit 30 rows (garter st).****

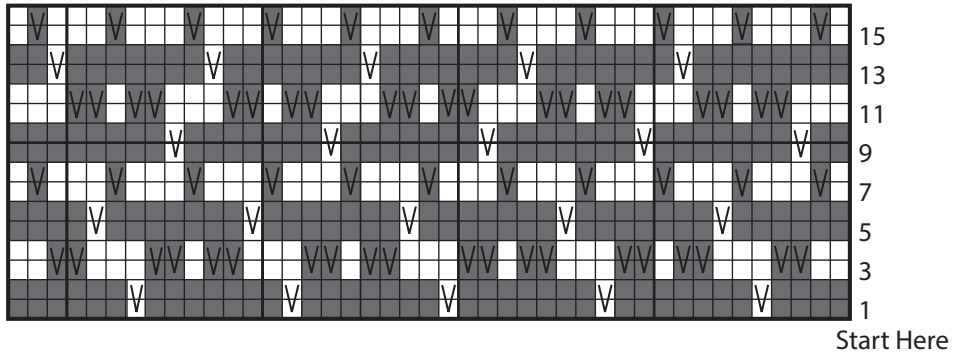
Work from **** to **** once more.
Cast off knitwise.

FINISHING

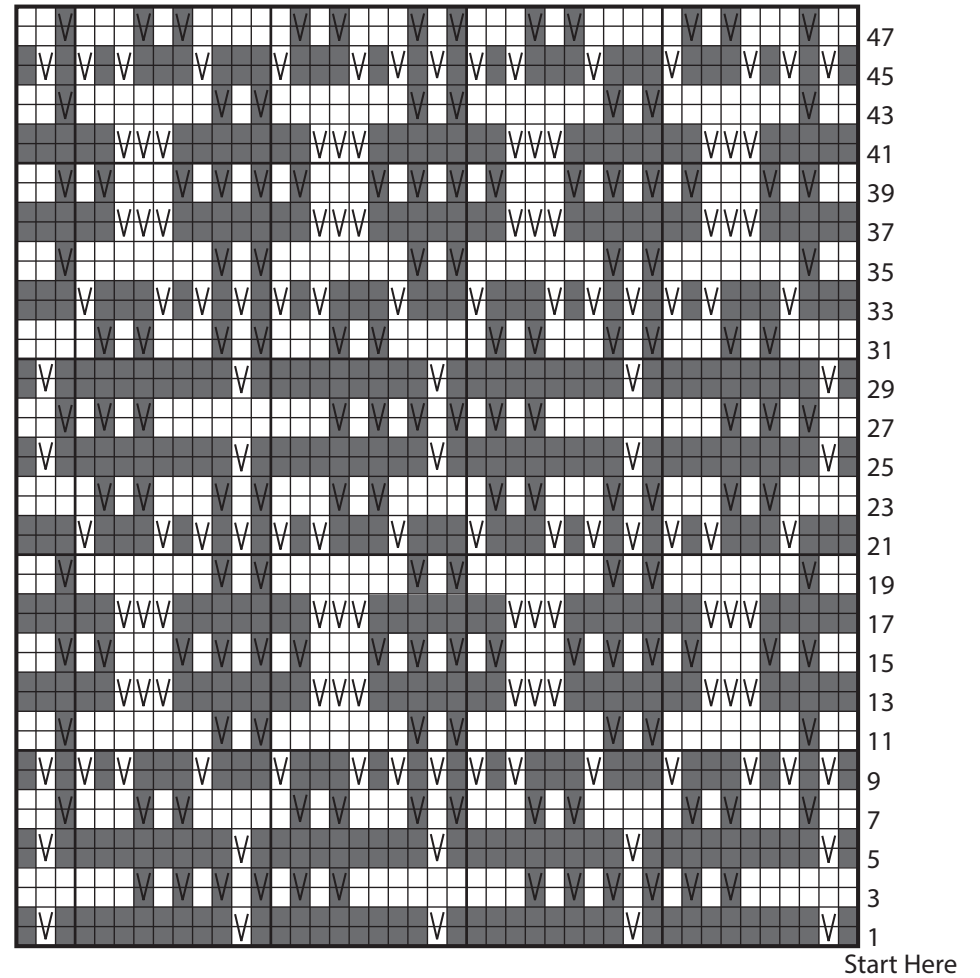
Cut strands of yarn 14" [35.5 cm] long. Taking 2 strands tog fold in half and knot into fringe across ends of Scarf and on body of Scarf, using slip st bars formed at ends of solid garter st sections, following Fringe Diagram shown on page 5. Trim fringe evenly.







Mosaic Pat I



Mosaic Pat II



Key

-  = With Color 1, knit.
-  = With Color 2, knit .
-  = With Color 1, S11Pwyib on RS rows. S11Pwyif on WS rows.
-  = With Color 2, S11Pwyib on RS rows. S11Pwyif on WS rows.

