



SUPER BULKY KNIT | SKILL LEVEL: **INTERMEDIATE**

ABBREVIATIONS

Alt = Alternate(ing)

Approx = Approximately

Beg = Beginning

C4B = Slip next 2 stitches onto cable needle and leave at back of work. K2, then K2 from cable needle

C4F = Slip next 2 stitches onto cable needle and leave at front of work. K2, then K2 from cable needle

Cont = Continue(ity)

Dec = Decreasing

Inc = Increasing

K = Knit

P = Purl

Pat = Pattern

Rep = Repeat

RS = Right side

St(s) = Stitch(es)

Tog = Together

WS = Wrong side

MEASUREMENTS

Approx 14" [35.5 cm] wide x 90" [228.5 cm] long, excluding fringe

GAUGE

11 sts and 15 rows = 4" [10 cm] in stocking st.

INSTRUCTIONS

Note: See Chart on page 2.

Cable Panel (worked over 16 sts)

1st row: (RS). K4. C4B. K8.

2nd and alt rows: Purl.

3rd row: K2. (C4B) twice. K6.

5th row: (C4B) twice. K8.

7th row: K2. C4B. K10.

9th row: Knit.

11th row: K8. C4F. K4.

13th row: K6. (C4F) twice. K2.

15th row: K8. (C4F) twice.

17th row: K10. C4F. K2.

19th row: Knit.

20th row: Purl.

These 20 rows form Cable Panel.

Cast on 55 sts.

1st row: (RS). *K1. P1. Rep from * to last st. K1.

2nd row: *P1. K1. Rep from * to last st. P1.

MATERIALS

Patons® Norse™ (3.5 oz/100 g; 211 yds/193 m)

Gray Denim (91013)

3 balls

Size U.S. 11 (8 mm) knitting needles **or size needed to obtain gauge.**
Cable needle.

Patons® STAGGERED CABLE KNIT SCARF

Rep last 2 rows of (K1. P1) ribbing once more, inc 1 st at center of last row. 56 sts.

Proceed in pat as follows:

1st row: (RS). K1. P1. (P1. Work 1st row of Cable Panel) 3 times. P2. K1.

2nd row: K1. P1. (K1. Work 2nd row of Cable Panel) 3 times. K1. P1. K1.

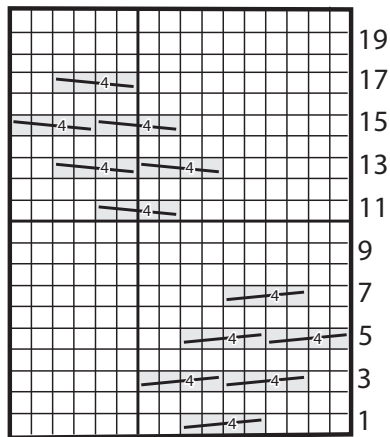
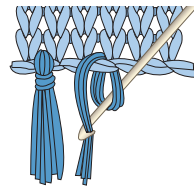
3rd row: K1. P1. (P1. Work 3rd row of Cable Panel) 3 times. P2. K1.

4th row: K1. P1. (K1. Work 4th row of Cable Panel) 3 times. K1. P1. K1. Cable Panel is now in position. Last 2 rows form Seed St Pat at each side of Scarf over 2 sts.

Cont in pat, keeping cont of Cable Panel until work from beg measures approx 89" [226 cm], ending on 8th or 18th row of pat and dec 1 st at center of last row. 55 sts.

Work 4 rows in (K1. P1) ribbing, as given above. Cast off in rib.

Fringe: Cut strands of yarn 15" [38 cm] long. Taking 2 strands tog, fold in half and knot into fringe across both ends of Scarf. Trim fringe evenly.



Start Here

Key

□ = Knit on RS rows. Purl on WS r

 = C4B

 = C4F

