



MATERIALS

Patons® Alpaca Blend™ (3.5 oz/100 g; 155 yds/142 m)

Tiger Eye (01013)

4 balls

Size U.S. 10 (6 mm) knitting needles **or size needed to obtain gauge.**

ABBREVIATIONS

Approx = Approximately

Beg = Begin(ning)

Inc = Increase(ing)

K = Knit

K2tog = Knit next 2 stitches together

Kfb = Increase 1 stitch by knitting into front and back of next stitch

P = Purl

Pat = Pattern

Rep = Repeat

RS = Right side

St(s) = Stitch(es)

WS = Wrong side



KNIT | SKILL LEVEL: EASY

MEASUREMENTS

Approx 13" x 84" (33 x 213.5 cm).

GAUGE

15 sts and 20 rows = 4" [10 cm] in stocking st.

INSTRUCTIONS

Cast on 47 sts.

Knit 8 rows (garter st), noting first row is WS.

Next row: (WS). (K15. Kfb) twice. K15. 49 sts.

Set up row 1: (RS). K3. P1. K41. P1. K3.

Set up row 2: K4. P41. K4.

Proceed in Diamond Pat as follows: See Chart on page 3.

1st row: K3. P1. K4. *P1. K7. Rep from * to last 9 sts. P1. K4. P1. K3.

2nd row: K4. P3. *K1. P1. K1. P5. Rep from * to last 10 sts. K1. P1. K1. P3. K4.

3rd row: K3. P1. K2. *P1. K3. Rep from * to last 7 sts. P1. K2. P1. K3.

4th row: K4. P1. *K1. P5. K1. P1. Rep from * to last 4 sts. K4.

5th row: K3. P2. *K7. P1. Rep from * to last 4 sts. P1. K3.

6th row: As 4th row.

7th row: As 3rd row.

8th row: As 2nd row.

9th to 24th rows: Rep last 8 rows of Diamond Pat twice more.

25th row: (RS). As 1st row.

26th row: K4. P41. K4.

27th row: K3. P1. K41. P1. K3.

28th row: Knit.

29th and 30th rows: As 27th and 28th rows.

31st row: (RS). K3. P1. K12. Kfb. K16. Kfb. K11. P1. K3. 51 sts.

Proceed in Basketweave Pat as follows: See Chart on page 3.

****32nd row:** (WS). K4. *P3. K5. Rep from * to last 7 sts. P3. K4.

33rd row: K3. P1. *K3. P5. Rep from * to last 7 sts. K3. P1. K3.

34th row: As 32nd row.

35th row: K3. P1. K43. P1. K3.

36th row: K8. *P3. K5. Rep from * to last 3 sts. K3.

37th row: K3. P5. *K3. P5. Rep from * to last 3 sts. K3.

38th row: As 36th row.

39th row: As 35th row.**

40th to 55th rows: Rep 32nd to 39th rows of Basketweave Pat twice more.

56th row: (WS). K24. K2tog. K25. 50 sts.

57th row: K3. P1. K42. P1. K3.

58th row: Knit.

59th row: As 57th row.

Proceed in Diagonal Pat as follows: See Chart on page 3.

*****60th row:** (WS). K4. *P2. K2. Rep from * to last 6 sts. P2. K4.

61st row: K3. P1. K1. *P2. K2. Rep from * to last 5 sts. P2. K3.

62nd row: K6. *P2. K2. Rep from * to last 4 sts. K4.

63rd row: K3. P2. *K2. P2. Rep from * to last 5 sts. K1. P1. K3.

64th to 75th rows: Rep 60th to 63rd rows of Diagonal Pat 3 times more.***

76th row: (WS). K4. P42. K4.

77th row: K3. P1. K42. P1. K3.

78th row: Knit.

79th and 80th rows: As 77th and 78th rows.

81st row: (RS). K3. P1. K21. Kfb. K20. P1. K3. 51 sts.

Rep from ** to ** (8 rows of Basketweave Pat) until work from beg measures approx 66" [167.5 cm], ending on a 38th row of Pat.

Next row: (RS). K3. P1. K43. P1. K3.

Next row: Knit.

Rep last 2 rows once more.

Next row: (RS). K3. P1. K20. K2tog. K21. P1. K3. 50 sts.

Rep from *** to *** (16 rows of Diagonal Pat).

Next row: (WS). K4. P42. K4.

Next row: K3. P1. K42. P1. K3.

Next row: Knit.

Next row: K3. P1. K42. P1. K3.

Rep last 2 rows once more.

Next row: (WS). K4. P42. K4.

Next row: (RS). K3. P1. K21. Kfb. K21. P1. K3. 51 sts.

Rep from ** to ** 3 times (24 rows of Basketweave Pat).

Next row: (WS). Knit.

Next row: K3. P1. K42. P1. K3.

Next row: Knit.

Next row: K3. P1. (K13. K2tog) twice. K12. P1. K3. 49 sts.

Next row: K4. P41. K4.

Proceed in Diamond Pat as follows:

1st row: (RS). K3. P1. K4. *P1. K7.

Rep from * to last 9 sts. P1. K4. P1. K3.

2nd row: K4. P3. *K1. P1. K1. P5. Rep from * to last 10 sts. K1. P1. K1. P3. K4.

3rd row: K3. P1. K2. *P1. K3. Rep from * to last 7 sts. P1. K2. P1. K3.

4th row: K4. P1. *K1. P5. K1. P1. Rep from * to last 4 sts. K4.

5th row: K3. P2. *K7. P1. Rep from * to last 4 sts. P1. K3.

6th row: As 4th row.

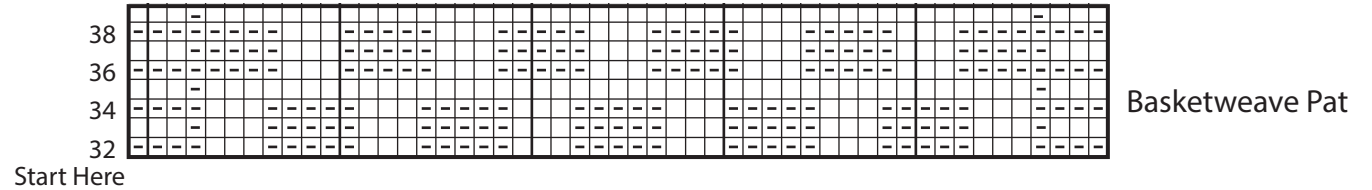
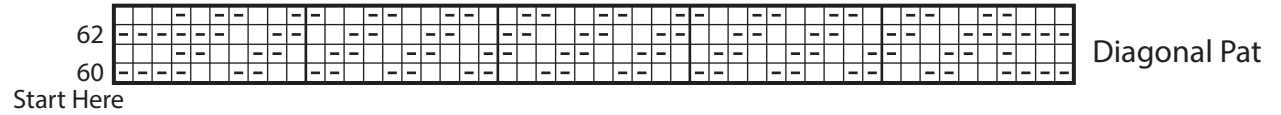
7th row: As 3rd row.

8th row: As 2nd row.

Rep 1st to 8th rows of Diamond Pat twice more, then rep 1st row once.

Beg on a WS row, work 8 rows garter st (knit every row).

Cast off knitwise (WS).



Key

- ☐ = Knit on RS rows. Purl on WS rows.
- ☐ (with horizontal line) = Purl on RS rows. Knit on WS rows

