

Patons® Silk Bamboo

SILK BAMBOO SCARF (TO KNIT)

MEASUREMENTS

Approx 9.5 ins x 65 ins [24 cm x 165 cm]

MATERIALS

Patons® Silk Bamboo

(65 g/2.2 oz; 93 m/102 yds)

85219 Sea **5 balls**

Sizes 4.5 mm (U.S. 7) and 5 mm (U.S. 8) knitting needles **or size needed to obtain tension.**
Cable needle.

TENSION

19 sts and 25 rows = 4 ins [10 cm] with larger needles in stocking st.

STITCH GLOSSARY

www.patonsyarns.com/glossary

C2B = Knit into front of 2nd stitch on left hand needle, then knit 1st stitch, slipping both sts off needle.

C4B = Slip next 2 stitches onto cable needle and leave at back of work. K2, then K2 from cable needle.

C4F = Slip next 2 stitches onto cable needle and leave at front of work. K2, then K2 from cable needle.

C5F = Slip next 3 stitches onto cable needle and leave at front of work. K2, then slip purl stitch back onto left hand needle. P1, then K2 from cable needle.

C6B = Slip next 3 stitches onto cable needle and leave at back of work. K3, then K3 from cable needle.

C6F = Slip next 3 stitches onto cable needle and leave at front of work. K3, then K3 from cable needle.



M1P = Make one stitch by picking up horizontal loop lying before next stitch and purling into back of loop.

T3B = Slip next stitch onto cable needle and leave at back of work. K2, then P1 from cable needle.

T3F = Slip next 2 stitches onto cable needle and leave at front of work. P1, then K2 from cable needle.

T4B = Slip next 2 stitches onto cable needle and leave at back of work. K2, then P2 from cable needle.

T4F = Slip next 2 stitches onto cable needle and leave at front of work. P2, then K2 from cable needle.

Work 5tog = Slip next 3 stitches purlwise. *Pass 2nd stitch on right hand needle over first stitch and slip first stitch back to left hand needle. Pass 2nd stitch on left hand needle over first stitch.* Slip stitch back to right hand needle and repeat from * to * once. P1.

INSTRUCTIONS

Panel Pat (worked over 25 sts-see chart).

1st row: (RS). P3. K2. P2. K2. P7. K2. P2. K2. P3.

2nd and alt rows: Knit the knit sts and purl the purl sts as they appear.

3rd row: As 1st row.

5th row: P3. K2. P2. K2. P3. M1P. (K1. P1. K1) in next st. M1P. P3. K2. P2. K2. P3. 29 sts.

7th row: P3. K2. P2. T3F. T4B. P1. T4F. T3B. P2. K2. P3.

9th row: P3. K2. P3. C4B. P5. C4B. P3. K2. P3.

11th row: P3. T3F. T4B. T4F. P1. T4B. T4F. T3B. P3.

13th row: P4. C4F. P4. C5F. P4. C4F. P4.



ABBREVIATIONS: www.patonsyarns.com/glossary

15th row: P2. T4B. T4F. T4B. P1. T4F. T4B. T4F. P2.

17th row: P2. K2. P4. C4B. P5. C4B. P4. K2. P2.

19th row: P2. T4F. T4B. T4F. P1. T4B. T4F. T4B. P2.

21st row: As 13th row.

23rd row: P3. T3B. T4F. T4B. P1. T4F. T4B. T3F. P3.

25th row: As 9th row.

27th row: P3. K2. P2. T3B. T4F. P1. T4B. T3F. P2. K2. P3.

28th row: K3. (P2. K2) twice. K1. Work 5tog. K1. (K2. P2) twice. K3. 25 sts.

29th to 32nd rows: As 1st and 2nd rows twice. These 32 rows form Panel Pat.

With smaller needles, cast 39 sts.

Work 9 rows garter st (knit every row) noting first row is WS and inc 8 sts evenly across last row. 47 sts.

Change to larger needles and proceed as follows:

1st row: (RS). K3. (C2B. P2) twice. Work 1st row of Panel Pat. (P2. C2B) twice. K3.

2nd row: K3. (P2. K2) twice. Work 2nd row of Panel Pat. (K2. P2) twice. K3.

These 2 rows form side pat. Panel Pat is now in position.

Cont in pat, keeping cont of panel pat, until work from beg measures approx 64 ins [162.5 cm], ending with 30th row of Panel Pat and dec 8 sts evenly across last row. 39 sts.

Change to smaller needles and work 9 rows garter st. Cast off knitwise (WS).

Key

☐ = Knit on RS and purl on WS

◻ = Purl on RS and knit on WS

= T3F

= C5F

= T3B

= C6F

= C4F

= C6B

= C4B

= M1P

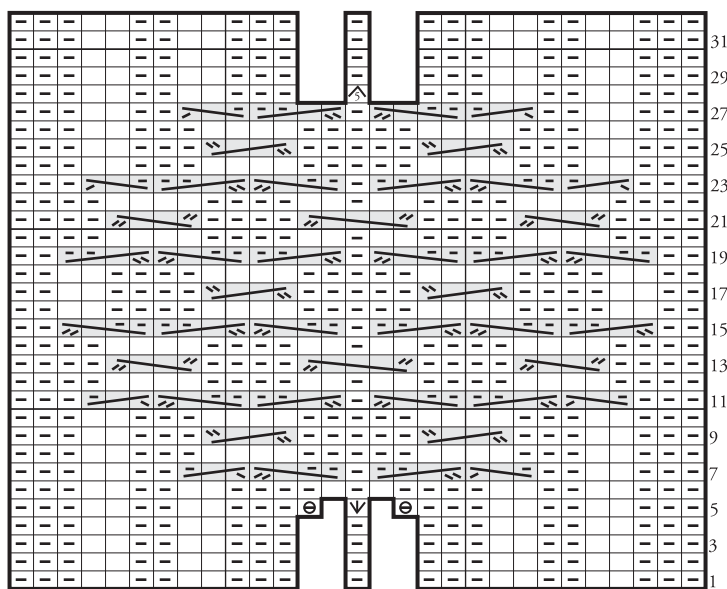
= T4F

= (K1. P1. K1) all in next st.

= T4B

= Work 5tog.

Panel Pat



Start Here

Patons

... a part of your life.

P.O. Box 40, Listowel ON N4W 3H3