



PATONS® LACE™ LOFTY RIPPLE SCARF (TO KNIT)

MEASUREMENTS

Approx 12½" x 72" [32 cm x 183 cm].

MATERIALS

Patons® Lace™ (85 g/3 oz; 455 m/498 yds)
Patina (33046)

2 balls

Size 3.75 mm (U.S. 5) knitting needles **or size needed to obtain tension.**

TENSION

25 sts and 30 rows = 4" [10 cm] in stocking st.

INSTRUCTIONS

Cast on 77 sts.

1st row: (WS). Knit.

2nd row: K2. *P1. K2tog. yo. Rep from * to last 3 sts. P1. K2.

3rd row: Knit.

4th row: K2. *P1. K8. Rep from * to last 3 sts. P1. K2.

5th row: K3. *P8. K1. Rep from * to last 2 sts. K2.

6th row: K2. *P1. yo. K3. ssk. K3. P1. K3. K2tog. K3. yo. Rep from * to last 3 sts. P1. K2.

7th row: K3. *P1. yo. P3. P2tog. P2. K1. P2. P2togtbl. P3. yo. P1. K1. Rep from * to last 2 sts. K2.

8th row: K2. *P1. K2. yo. K3. ssk. K1. P1. K1. K2tog. K3. yo. K2. Rep from * to last 3 sts. P1. K2.

9th row: K3. *P3. yo. P3. P2tog. K1. P2togtbl. P3. yo. P3. K1. Rep from * to last 2 sts. K2.

10th row to 17th rows: Rep 6th to 9th rows twice more.

18th and 19th rows: Rep 4th and 5th rows.

20th row: Knit.

Rep last 20 rows for Lace Pat until work from beg measures approx 72" [183 cm], ending on a 3rd row of pat. Cast off.

STITCH GLOSSARY

www.patonsyarns.com/abbreviations

Approx = Approximately

Beg = Beginning

K = Knit

K2tog = Knit next 2 stitches together

P = Purl

P2tog = Purl next 2 stitches together

P2togtbl = Purl next 2 stitches together through back loops

Pat = Pattern

Rep = Repeat

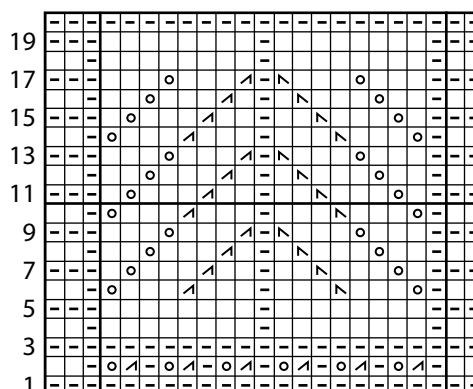
RS = Right side

SSk = Slip next 2 stitches knitwise one at a time. Pass them back onto left-hand needle, then knit through back loops together

St(s) = Stitch(es)

Yo = Yarn over

WS = Wrong side



Start Here 18-st rep

KEY

- = Knit on RS rows. Purl on WS rows.
- ◻ = Purl on RS rows. Knit on WS rows.
- ▣ = K2tog on RS rows. P2tog on WS rows.
- ▤ = ssk on RS rows. P2togtbl on WS rows.
- ⊞ = yo

Patons®
Lace™
...a part of your life.

P.O. Box 40, Listowel ON N4W 3H3

www.patonsyarns.com

LOFTY RIPPLE SCARF **1 of 1**

