



Scarf

**PATONS® LACE™ OR PATONS® LACE SEQUIN™  
DELICATE CABLES SCARF & SHAWL  
(TO KNIT)**

**MEASUREMENTS**

**Scarf:** Approx 7" x 60" [18 x 152.5 cm].

**Shawl:** Approx 22" x 60" [56 x 152.5 cm].

**MATERIALS**

**Scarf**

**Patons® Lace™** (85 g/3 oz; 455 m/498 yds)

33317 (Arctic Plum) **2 balls**

Size 4 mm (U.S. 6) needles **or size needed to obtain tension.** Cable needle.

**Shawl**

**Patons® Lace Sequin™** (70 g/2.5 oz; 314 m/344 yds)

37005 (Crystal) **6 balls**

Size 4 mm (U.S. 6) circular knitting needle 24" [61 cm] long **or size needed to obtain tension.** Cable needle.

**TENSION**

24 sts and 30 rows = 4" [10 cm] in stocking st.



Shawl

**STITCH GLOSSARY**

[www.patonsyarns.com/abbreviations](http://www.patonsyarns.com/abbreviations)

**Approx** = Approximately.

**Beg** = Beginning.

**Cont** = Continue(ity).

**C5B** = Slip next 2 stitches onto cable needle and leave at back of work. K3, then K2 from cable needle.

**C5F** = Slip next 3 stitches onto cable needle and leave at front of work. K2, then K3 from cable needle.

**C6F** = Slip next 3 stitches onto cable needle and leave at front of work. K3, then K3 from cable needle.

**K** = Knit.

**K2tog** = Knit next 2 stitches together.

**M1** = Make 1 stitch by picking up horizontal loop lying before next stitch and knitting into back of loop.



**Pat** = Pattern.

**P** = Purl.

**P2tog** = Purl next 2 stitches together.

**P2togtbl** = Purl next 2 stitches together through back loops.

**Rep** = Repeat.

**RS** = Right side.

**Ssk** = Slip next 2 stitches knitwise one at a time. Pass them back onto left-hand needle, then knit through back loops together.

**St(s)** = Stitch(es).

**WS** = Wrong side.

**Yo** = Yarn over.

**INSTRUCTIONS**

The instructions are written for Scarf. If changes are necessary for Shawl, the instructions will be written thus (.). Numbers for each item are shown in the same color throughout the pattern. When only one number is given in black, it applies to both versions.

Cast on **38 (120)** sts.

Knit 9 rows (garter st), noting 1st row is RS.



[www.patonsyarns.com](http://www.patonsyarns.com)



**Scarf only: Next row:** (WS). K7. \*K1. M1. Rep from \* to last 7 sts. K7. 62 sts.

**Shawl only: Next row:** (WS). K6. \*M1. K2. M1. K1. Rep from \* to last 6 sts. K6. 192 sts.

**Both Versions:** Proceed in pat as follows:

**1st row:** (RS). K5. \*P1. K12. Rep from \* to last 5 sts. K5.

**2nd row:** K5. \*P12. K1. Rep from \* to last 5 sts. K5.

**3rd row:** K5. \*P1. yo. K4. ssk. K2tog. K4. yo. P1. C5F. K2. C5B. Rep from \* to last 5 sts. K5.

**4th row:** K5. \*P12. K1. P1. yo. P3. P2tog. P2togtbl. P3. yo. P1. K1. Rep from \* to last 5 sts. K5.

**5th row:** K5. \*P1. K2. yo. K2. ssk. K2tog. K2. yo. K2. P1. K3. C6F. K3. Rep from \* to last 5 sts.

**6th row:** K5. \*P12. K1. P3. yo. P1. P2tog. P2togtbl. P1. yo. P3. K1. Rep from \* to last 5 sts. K5.

**7th row:** K5. \*P1. K4. yo. ssk. K2tog. yo. K4. P1. C5F. K2. C5B. Rep from \* to last 5 sts. K5.

**8th row:** As 2nd row.

**9th row:** As 1st row.

**10th row:** As 2nd row.

**11th row:** K5. \*P1. C5F. K2. C5B. P1. yo. K4. ssk. K2tog. K4. yo. Rep from \* to last 5 sts. K5.

**12th row:** K5. \*P1. yo. P3. P2tog. P2togtbl. P3. yo. P1. K1. P12. K1. Rep from \* to last 5 sts. K5.

**13th row:** K5. \*P1. K3. C6F. K3. P1. K2. yo. K2. ssk. K2tog. K2. yo. K2. Rep from \* to last 5 sts.

**14th row:** K5. \*P3. yo. P1. P2tog. P2togtbl. P1. yo. P3. K1. P12. K1. Rep from \* to last 5 sts. K5.

**15th row:** K5. \*P1. C5F. K2. C5B. P1. K4. yo. ssk. K2tog. yo. K4. Rep from \* to last 5 sts. K5.

**16th row:** As 2nd row.



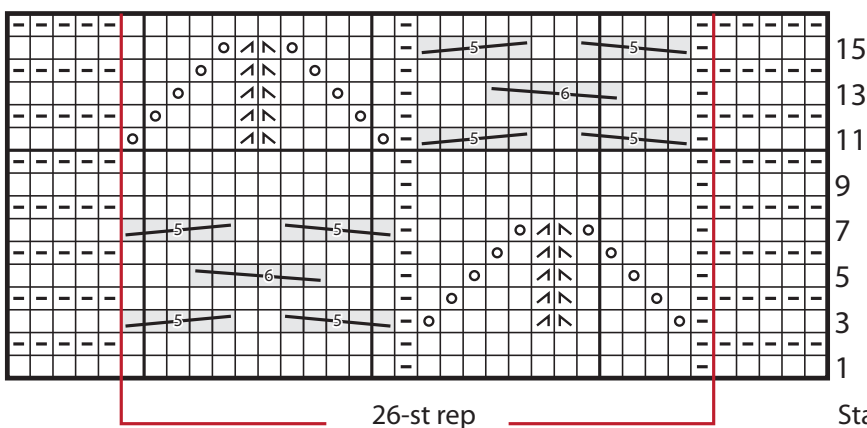
These 16 rows form pat. Cont in pat as established until work from beg measures approx 58" [147.5 cm] ending with an 7th or 15th row.

**Scarf only: Next row:** (WS). K7. \*K2tog. Rep from \* to last 7 sts. K7. 38 sts.

**Shawl only: Next row:** (WS). K6. \*K2tog. K1. K2tog. Rep from \* to last 6 sts. K6. 120 sts.

**Both Versions:** Knit 7 rows (garter st). Cast off (WS).

### CHART



### KEY

□ = Knit on RS rows. Purl on WS rows.

◻ = Purl on RS rows. Knit on WS rows.


 = C6F

 = C5B

 = C5F

 = K2tog on RS rows. P2tog on WS rows.

 = ssk on RS rows. P2togtbl on WS rows.

 = yo



**Patons**  
Lace *Sequin*

www.patonsyarns.com

**Patons**  
Lace

... a part of your life.

P.O. Box 40, Listowel ON N4W 3H3

DELICATE CABLES SCARF & SHAWL 2 of 2