



Marly Bird
from Marly Bird



KNIT | SKILL LEVEL: **INTERMEDIATE**

MATERIALS

Patons® Classic Wool Worsted™ (3.5 oz/100 g; 194 yds/177 m)

Contrast A Indigo (77772)	1 ball
Contrast B Rich Raspberry (77783)	1 ball
Contrast C Pumpkin (77605)	1 ball
Contrast D Sprout (77759)	1 ball
Contrast E Rich Grass (77764)	1 ball
Contrast F Seafoam (77219)	1 ball
Contrast G Rich Teal (77768)	1 ball
Contrast H Aran (00202)	1 ball
Contrast I Brown Mustard (77757)	1 ball

Sizes U.S. 8 [5 mm] and U.S. 9 [5.5 mm] Susan Bates® circular knitting needles 16" [40.5 cm] long. Set of 4 size U.S. 9 [5.5 mm] double-pointed knitting needles **or size needed to obtain gauge.** Susan Bates® stitch marker. Susan Bates® yarn needle.

SIZE

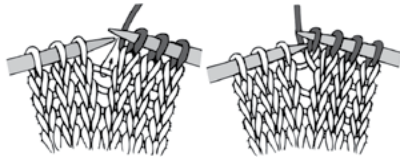
One size to fit Adult.

GAUGE

20 sts and 24 rnds = 4" [10 cm] in Fair Isle knitting stocking st with larger needles.

ABBREVIATIONS

- K** = Knit
- K2tog** = Knit next 2 stitches together
- M1** = Make 1 stitch by picking up horizontal loop lying before next stitch and knitting into back of loop



- P** = Purl
- Rem** = Remaining
- Rep** = Repeat
- Rnd(s)** = Round(s)
- St(s)** = Stitch(es)
- Tog** = Together
- WS** = Wrong side

INSTRUCTIONS

Notes

- When working in Fair Isle technique, carry yarn not in use loosely across WS of work but never over more than 5 sts. When it must pass over more than 5 sts, weave it over and under color in use on next st or at center point of sts it passes over. The colors are never twisted around one another.
- When a color is finished being used in a section, cut it and carry on. **Do not** carry colors up the inside of work.

Brim

With G and smaller circular needle, cast on 100 sts. Join in rnd and place marker on first st.

1st rnd: *K1. P1. Rep from * around.

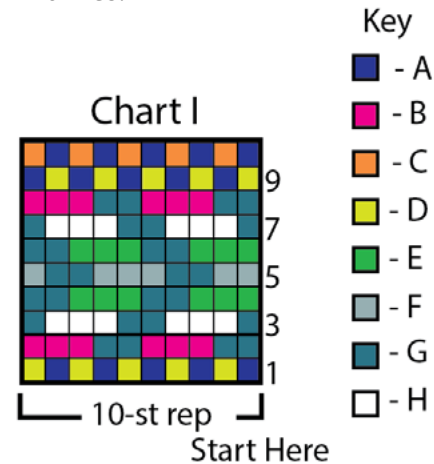
Rep last rnd of (K1. P1) ribbing for 1¼" [4 cm].

Next rnd: *M1. K10. Rep from * around. 110 sts.

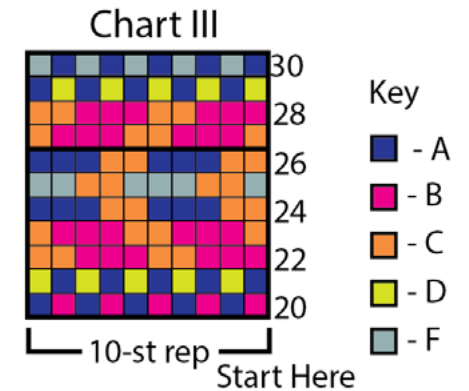
Change to larger circular needle and proceed as follows:

Body

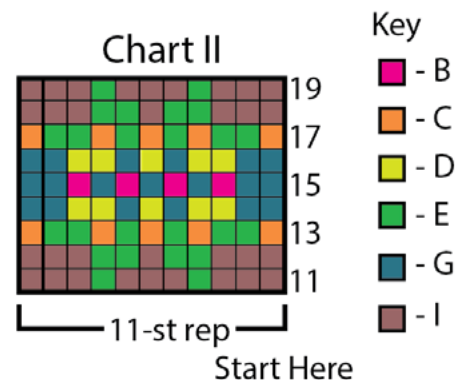
1st to 10th rnds: Knit Chart I, reading rnds from **right to left**, noting 10-st rep will be worked 11 times.



20th to 30th rnds: Knit Chart III, reading rnds from **right to left**, noting 10-st rep will be worked 11 times.



11th to 19th rnds: Knit Chart II, reading rnds from **right to left**, noting 11-st rep will be worked 10 times.

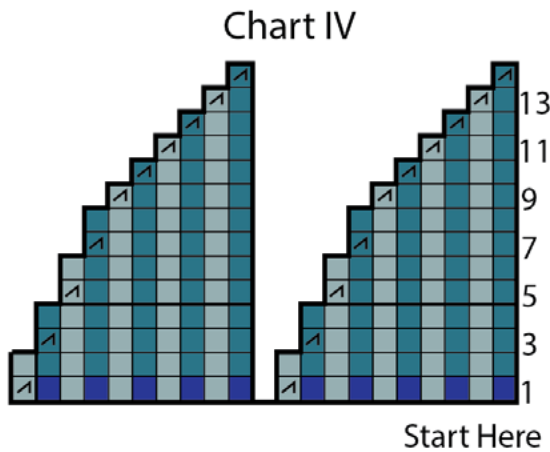


Crown

Knit Chart IV, *reading rnds from right to left*, noting decreases will be worked 11 times. Change to set of 4 needles when necessary to accommodate sts.

FINISHING

Draw yarn through rem 11 sts.
Pull tightly. Fasten securely.
Weave in ends.



Key

- A
- F
- G
- with F, K2tog
- with G, K2tog

