



Seema Persaud
Designer



KNIT | SKILL LEVEL: INTERMEDIATE

ABBREVIATIONS

Abbreviations

Alt = Alternate

Beg = Begin(ning)

K = Knit

K1tbl = Knit next stitch through back loop

K2tog = Knit next 2 stitches together

Pat = Pattern

P = Purl

Rem = Remaining

Rep = Repeat

Rnd(s) = Round(s)

Ssk = Slip next 2 stitches knitwise one at a time. Pass them back onto left-hand needle, then knit through back loops together

St(s) = Stitch(es)

WS = Wrong side

SIZE

One size to fit Adult.

GAUGES

11 sts and 14 rows = 4" [10 cm] with larger needles in stocking st.

11 sts and 11 rows = 4" [10 cm] with larger needles in Chart Pat.

INSTRUCTIONS

Notes:

- When working from chart, carry colors not in use loosely across WS of work. When colors pass over more than 5 sts, weave it over and under center st of color it passes over. The colors are never twisted around one another.

MATERIALS

Patons® Highland Bulky™ (3.5 oz/100 g; 83 yds/76 m)

Contrast A Tidal (13010) **1 ball**

Contrast B Aran (13001) **1 ball**

Sizes U.S. 10½ (6.5 mm) and U.S. 11 (8 mm) circular knitting needles 16" [40.5] long. Set of 4 size U.S. 11 (8 mm) double-pointed knitting needles **or size needed to obtain gauge.** Stitch marker. Yarn needle.

- When working from chart, always take B under A, and A over B, to ensure dominant color (B) stands out against background color (A).

HAT

Ribbing: With smaller circular needle and A, cast on 56 sts. Join in rnd, placing marker on first st.

1st rnd: *K1tbl. P1. Rep from * around.

Rep last rnd Twisted Ribbing for 2" [5 cm].

Change to larger circular needle and beg working Chart (knit every rnd), *reading rnds from right to left*, noting 14-st rep will be worked 4 times, until all 15 rnds of Chart have been completed. Break B.

Change to double-pointed needles.

Shape top:

1st rnd: With A only, *K2tog. K10. ssk. Rep from * around. 48 sts.

2nd and alt rnds: Knit.

3rd rnd: *K2tog. K8. ssk. Rep from * around. 40 sts.

5th rnd: *K2tog. K6. ssk. Rep from * around. 32 sts.

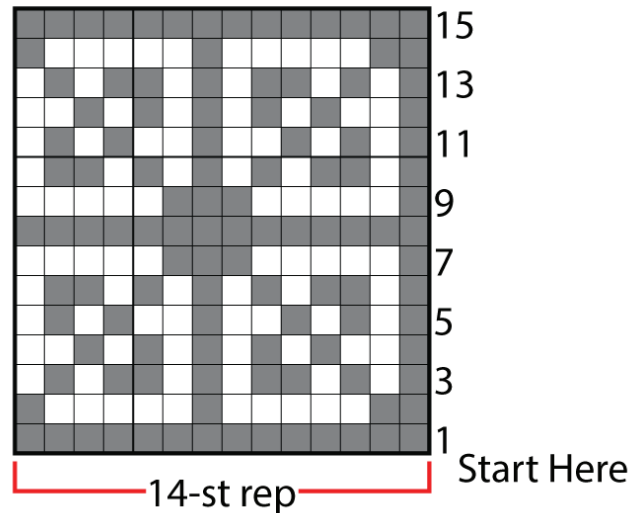
7th rnd: *K2tog. K4. ssk. Rep from * around. 24 sts.

9th rnd: *K2tog. K2. ssk. Rep from * around. 16 sts.

10th rnd: *K2tog. Rep from * around. 8 sts.

Break yarn leaving a long end. Thread end through rem sts and fasten securely.

CHART



KEY

■ = Contrast A

□ = Contrast B

