



Erin Black  
Designer

## Patons® FROSTED FAIR ISLE KNIT HAT *Designed by Erin Black | KNIT*



### MATERIALS

**Patons® Classic Wool Worsted™** (3.5 oz/100 g; 210 yds/192 m)

**Main Color (MC)** Heath Heather (77215) **1 ball**

**Contrast A** Aran (00202) **1 ball**

**Contrast B** Peacock (00218) **1 ball**

**Contrast C** Seafoam (77219) **1 ball**

Sizes U.S. 6 (4 mm) and U.S. 7 (4.5 mm) circular knitting needles 16" [40.5 cm] long. Set of four size U.S. 7 (4.5 mm) double-pointed knitting needles **or size needed to obtain gauge.** Stitch marker.



KNIT | SKILL LEVEL: **INTERMEDIATE**

### ABBREVIATIONS

**Approx** = Approximately

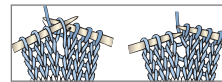
**Beg** = Begin(ning)

**Cont** = Continue(ity)

**K** = Knit

**K2tog** = Knit next 2 stitches together

**M1** = Make 1 stitch by picking up horizontal loop lying before next stitch and knitting into back of loop



**Pat** = Pattern

**Rem** = Remain(ing)

**Rep** = Repeat

**Rnd(s)** = Round(s)

**St(s)** = Stitch(es)

**WS** = Wrong side

### SIZE

One size to fit adult.

### GAUGE

20 sts and 26 rows = 4" [10 cm] in stocking st with larger needles.

### INSTRUCTIONS

**Note:** When working from Chart, carry yarn not in use loosely across WS of work but never over more than 5 sts. When it must pass over more than 5 sts, weave it over and under color not in use. The colors are never twisted around one another.

With MC and smaller circular needle, cast on 96 sts. Join in rnd and place marker on first st.

**1st rnd:** \*K2. P2. Rep from \* around.

Rep this rnd of (K2. P2) ribbing for 1½" [4 cm].

**Next rnd:** \*M1. K12. Rep from \* around. 104 sts.

Change to larger circular needle and proceed as follows:

**1st rnd:** Knit.

**2nd to 25th rnds:** Knit rows 1 to 24 of Chart (shown on page 2), reading rnds from **right** to left, noting 8-st repeat will be worked 13 times.



Erin Black  
Designer

## Patons® FROSTED FAIR ISLE KNIT HAT *Designed by Erin Black | KNIT*

**26th to 48th rnds:** Knit rows 1 to 23 of Chart.

**Crown shaping: 1st rnd:** With MC, \*K11. K2tog. Rep from \* around. 96 sts.

**2nd, 4th, 6th and 8th rnds:** Knit.  
**3rd rnd:** \*K10. K2tog. Rep from \* around. 88 sts.

Change to double-pointed needles.

**5th rnd:** \*K9. K2tog. Rep from \* around. 80 sts.

**7th rnd:** \*K8. K2tog. Rep from \* around. 72 sts.

**9th rnd:** \*K7. K2tog. Rep from \* around. 64 sts.

**10th rnd:** \*K6. K2tog. Rep from \* around. 56 sts.

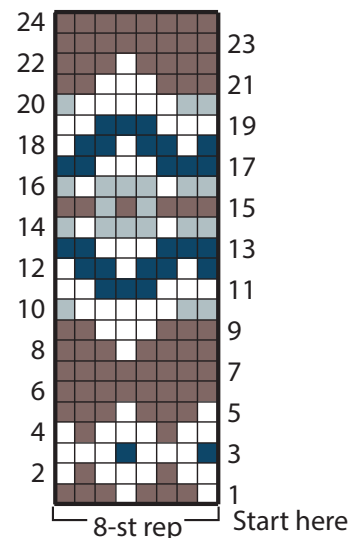
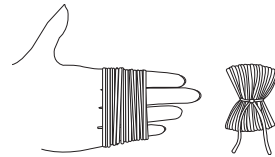
**11th rnd:** \*K5. K2tog. Rep from \* around. 48 sts.

**12th rnd:** \*K2. K2tog. Rep from \* around. 32 sts.

**13th rnd:** \*K1. K2tog. Rep from \* around. 24 sts. Break yarn, leaving a long end. Thread end through rem sts and draw up tightly. Fasten securely.

### Pompom (optional)

Wind MC, A, B and C around 4 fingers approx 25 times. Tie tightly in the middle and leave a long end for attaching to Hat. Cut loops at both ends and trim to smooth round shape. Sew securely to top of Hat.



Key  
 ■ = Main Color (MC)  
 □ = Contrast A  
 ■ = Contrast B  
 ■ = Contrast C

