



## MATERIALS

### Pullover

Patons® Shetland Chunky™ (100 g/3.5 oz; 136 m/148 yds)

Sizes **S** **M** **L** **XL**  
Aran (78008) **10** **10** **11** **12** balls

Toque (One size to fit lady)

Patons® Classic Merino Wool™ (100 g/223 yds/204 m)

Color A Natural Mix (229) **1** ball  
Color B Aran (202) **1** ball

**Pullover:** Sizes 5½ mm (U.S. 9) and 6 mm (U.S. 10) knitting needles **or size needed to obtain gauge.** Cable needle, 2 st holders.

**Toque:** Sizes 6 mm (U.S. 10) and 6.5 mm (U.S. 10½) knitting needles **or size needed to obtain gauge.**

### ABBREVIATIONS: [www.yarnspirations.com/abbreviations](http://www.yarnspirations.com/abbreviations)

**Beg** = Beginning

**Cont** = Continue(ity)

**C4F** = Slip next 2 sts and leave at front of work. K2, then K2 from cable needle.

**C4B** = Slip next 2 sts and leave at back of work. K2, then K2 from cable needle.

**K** = Knit

**Pat** = Pattern

**RS** = Right side

**Ssk** = Slip next 2 sts knit-

wise one at a time. Pass them back onto left-hand needle, then knit through back loops tog.

**St(s)** = Stitch(es)

**Tog** = Together

**WS** = Wrong side



INTERMEDIATE

## SIZES

### Bust measurement

**Small** 32-34" [81.5-86.5 cm]

**Medium** 36-38" [91.5-96.5 cm]

**Large** 40" [101.5 cm]

**Extra-Large** 42" [106.5 cm]

### Finished bust

**Small** 38" [96.5 cm]

**Medium** 42" [101.5 cm]

**Large** 44" [112 cm]

**Extra-Large** 47" [119.5 cm]

## GAUGE

**Pullover:** 15 sts and 20 rows = 4" [10 cm] in stocking st.

**Toque:** 14 sts and 19 rows = 4" [10 cm] in stocking st with smaller needles and 2 strands of yarn worked tog.

## INSTRUCTIONS

### Pullover

*The instructions are written for smallest size. If changes are necessary for larger sizes the instructions will be written thus ( ).*

**Panel Pat A** (worked over 22 sts. See chart on page 5).

**1st row:** (RS). K6. C4B. P2. C4F. K6.

**2nd and alt rows:** P10. K2. P10.

**3rd row:** K4. C4B. K2. P2. K2. C4F. K4.

**5th row:** K2. (C4B) twice. P2. (C4F) twice. K2.

**7th row:** (C4B) twice. K2. P2. K2. (C4F) twice.

**9th row:** As 5th row.

**11th row:** As 7th row.

**13th row:** K2. C4B. K4. P2. K4. C4F. K2.

**15th row:** C4B. K6. P2. K6. C4F.

**16th row:** As 2nd row.

These 16 rows form Panel Pat A.

**Panel Pat B** (worked over 26 sts. See chart on page 5).

**1st row:** (RS). (K2. P2) 5 times. K2. C4B.

**2nd and alt rows to 26th row:** Knit all knit sts and purl all purl sts as they appear.

**3rd row:** (K2. P2) 5 times. C4B. K2.

**5th row:** (K2. P2) 4 times. K2. (C4B) twice.

**7th row:** (K2. P2) 4 times. (C4B) twice. K2.

**9th row:** (K2. P2) 3 times. K2. (C4B) 3 times.

**11th row:** (K2. P2) 3 times. (C4B) 3 times. K2.

**13th row:** (K2. P2) twice. K2. (C4B) 4 times.

**15th row:** (K2. P2) twice. (C4B) 4 times. K2

**17th row:** K2. P2. K2. (C4B) 5 times.

**19th row:** K2. P2. (C4B) 5 times. K2.

**21st row:** K2. (C4B) 6 times.

**23rd row:** (C4B) 6 times. K2.

**25th row:** As 21st row.

**27th row:** As 23rd row.

**28th row:** P2. K2. P22.

**29th row:** K2. (C4B) 5 times. P2. K2.

**30th row:** As 28th row.

**31st row:** (C4B) 5 times. K2. P2. K2.

**32nd row:** (P2. K2) twice. P18.

**33rd row:** K2. (C4B) 4 times. (P2. K2) twice.



**34th row:** As 32nd row.

**35th row:** (C4B) 4 times. K2. (P2. K2) twice.

**36th row:** (P2. K2) 3 times. P14.

**37th row:** K2. (C4B) 3 times. (P2. K2) 3 times.

**38th row:** As 36th row.

**39th row:** (C4B) 3 times. (K2. P2) 3 times. K2.

**40th row:** (P2. K2) 4 times. P10.

**41st row:** K2. (C4B) twice. (P2. K2) 4 times.

**42nd row:** As 40th row.

**43rd row:** (C4B) twice. K2. (P2. K2) 4 times.

**44th row:** (P2. K2) 5 times. P6.

**45th row:** K2. C4B. (P2. K2) 5 times.

**46th row:** As 44th row.

**47th row:** C4B. (K2. P2) 5 times. K2.

**48th row:** (P2. K2) 6 times. P2.

These 48 rows form Panel Pat B.

**Panel Pat C** (worked over 26 sts. See chart on page 5.)

**1st row:** (RS). C4F. (K2. P2) 5 times. K2.

**2nd and alt rows to 26th row:** Knit all knit sts and purl all purl sts as they appear.

**3rd row:** K2. C4F. (P2. K2) 5 times.

**5th row:** (C4F) twice. (K2. P2) 4 times. K2.

**7th row:** K2. (C4F) twice. (P2. K2) 4 times.

**9th row:** (C4F) 3 times. K2. (P2. K2) 3 times.

**11th row:** K2. (C4F) 3 times. (P2. K2) 3 times.

**13th row:** (C4F) 4 times. K2. (P2. K2) twice.

**15th row:** K2. (C4F) 4 times. (P2. K2) twice.

**17th row:** (C4F) 5 times. K2. P2. K2.

**19th row:** K2. (C4F) 5 times. P2. K2.

**21st row:** (C4F) 6 times. K2.

**23rd row:** K2. (C4F) 6 times.

**25th row:** As 21st row.

**27th row:** As 23rd row.

**28th row:** P22. K2. P2.

**29th row:** K2. P2. (C4F) 5 times. K2.

**30th row:** As 28th row.

**31st row:** K2. P2. K2. (C4F) 5 times.

**32nd row:** P18. (K2. P2) twice.

**33rd row:** (K2. P2) twice. (C4F) 4 times. K2.

**34th row:** As 32nd row.

**35th row:** (K2. P2) twice. K2. (C4F) 4 times.

**36th row:** P14. (K2. P2) 3 times.

**37th row:** (K2. P2) 3 times. (C4F) 3 times. K2.

**38th row:** As 36th row.

**39th row:** (K2. P2) 3 times. K2. (C4F) 3 times.

**40th row:** P10. (K2. P2) 4 times.

**41st row:** (K2. P2) 4 times. (C4F) twice. K2.

**42nd row:** As 40th row.

**43rd row:** K2. (P2. K2) 4 times. (C4F) twice.

**44th row:** P6. (K2. P2) 5 times.

**45th row:** (K2. P2) 5 times. C4F. K2.

**46th row:** As 44th row.

**47th row:** (K2. P2) 5 times. K2. C4F.

**48th row:** (P2. K2) 6 times. P2.

These 48 rows form Panel Pat C.

## BACK

\*\*With smaller needles, cast on **92 (100-108-116)** sts.

**1st row:** (RS). (P2. K2) **7 (8-9-10)** times. P2. K3. P2. (K4. P2) 4 times. K3. (P2. K2) **7 (8-9-10)** times. P2.

**2nd row:** (K2. P2) **7 (8-9-10)** times. K2. P3. K2. (P4. K2) 4 times. P3. (K2. P2) **7 (8-9-10)** times. K2.

Rep last 2 rows twice more.

Change to larger needles and proceed as follows:

**1st row:** (RS). (P2. K2) **7 (8-9-10)** times. P2. K3. P2. Work 1st row of Panel Pat A. P2. K3. (P2. K2) **7 (8-9-10)** times. P2.

**2nd row:** (K2. P2) **7 (8-9-10)** times. K2. P3. K2. Work 2nd row of Panel Pat A. K2. P3. (K2. P2) **7 (8-9-10)** times. K2. Panel Pat A is now in position.

Cont in pat, keeping cont of Panel Pat A, until work from beg measures 2" [5 cm], ending with a WS row.

Proceed as follows:

**1st row:** P2. (K2. P2) **0 (1-2-3)** time(s). Work 1st row of Panel Pat B. P2. K3. P2. Work appropriate row of Panel Pat A. P2. K3. P2. Work 1st row of Panel Pat C. P2. (K2. P2) **0 (1-2-3)** time(s).

**2nd row:** K2. (P2. K2) **0 (1-2-3)** time(s). Work 2nd row of Panel Pat C. K2. P3. K2. Work appropriate row of Panel Pat A. K2. P3. K2. Work 2nd row of Panel Pat B. K2. (P2. K2) **0 (1-2-3)** time(s). Panel Pats B and C are now in position.

Cont in pat, keeping cont of Panel Pats, until 48th row of Panel Pats B and C have been worked.

Proceed as follows:

**1st row:** (RS). (P2. K2) **7 (8-9-10)** times. P2. K3. P2. Work appropriate row of Panel Pat A. P2. K3. (P2. K2) **7 (8-9-10)** times. P2.

**2nd row:** (K2. P2) **7 (8-9-10)** times. K2. P3. K2. Work appropriate row of Panel Pat A. K2. P3. (K2. P2) **7 (8-9-10)** times. K2.

Cont in pat, keeping cont of Panel Pat A, until work from beg measures 14½" [37 cm], ending with a WS row.

**Armhole Shaping:** Cast off 6 sts beg next 2 rows. **80 (88-96-104)** sts.

**Next row:** K2. ssk. Pat to last 4 sts. K2tog. K2.

**Next row:** P2. P2tog. Pat to last 4 sts. P2togtbl. P2.

Rep last 2 rows **2 (2-2-3)** times more.

**Next row:** K2. ssk. Pat to last 4 sts. K2tog. K2.

**Next row:** Work even in pat.

Rep last 2 rows 5 times more. **56 (64-72-76)** sts.\*\*

Cont even in pat, keeping cont of Panel Pat A, until armhole measures **8¼ (8¾-9¼-9¼)" [21 (21.5-23.5-23.5)** cm], ending with a WS row.



**Shoulder and back neck shaping: Next row:** Pat 12 (16-18-20) sts. Work 2tog. Turn. Leave rem sts on a st holder.

**Next row:** Work 2tog. Pat to end of row.

**Next row:** Cast off 6 (8-9-10) sts. Pat to last 2 sts. Work 2tog.

**Next row:** Work even in pat. Cast off rem 5 (7-8-9) sts. With RS of work facing, slip next 28 (28-32-32) sts onto a st holder.

Join yarn to rem sts and proceed as follows: Work 2tog. Pat to end of row.

**Next row:** Cast off 6 (8-9-10) sts. Pat to last 2 sts. Work 2tog.

**Next row:** Work 2tog. Pat to end of row. Cast off rem 5 (7-8-9) sts.

## FRONT

Work from \*\* to \*\* as given for Back. Cont even in pat, keeping cont of Panel Pat A, until armhole measures 5½ (6-6½-6½)" [14 (15-16.5-16.5) cm], ending with a WS row.

**Neck shaping: Next row:** Pat 15 (19-23-25) sts. Turn.

Leave rem sts on a st holder. Dec 1 st at neck edge on next 2 rows, then every following alt row 2 (2-4-4) times. 11 (15-17-19) sts.

Cont even in pat until Front measures same length as Back to beg of shoulder shaping, ending with a WS row.

**Shoulder shaping:** Cast off 6 (8-9-10) sts beg next row. Work 1 row even. Cast off rem 5 (7-8-9) sts. With RS of work facing, slip next 26 sts onto a st holder. Join yarn to rem sts and pat to end of row.

Dec 1 st at neck edge on next 2 rows, then every following alt row 2 (2-4-4) times. 11 (15-17-19) sts.

Cont even in pat until Front measures same length as Back to beg of shoulder shaping, ending with a RS row.

**Shoulder shaping:** Cast off 6 (8-9-10) sts beg next row. Work 1 row even. Cast off rem 5 (7-8-9) sts.

## SLEEVES

With smaller needles, cast on 42 sts.

**1st row:** (RS). (P2. K2) twice. (P2. K4) 4 times. P2. (K2. P2) twice.

**2nd row:** (K2. P2) twice. (K2. P4) 4 times. K2. (P2. K2) twice.

Rep last 2 rows twice more.

Change to larger needles and proceed as follows:

**1st row:** (RS). Inc 1 st in first st. P1. (K2. P2) twice. Work 1st row of Panel Pat A. (P2. K2) twice. Inc 1 st in next st. P1. 44 sts.

**2nd row:** P1. K2. (P2. K2) twice. Work 2nd row of Panel Pat A. (K2. P2) twice. K2. P1.

**3rd row:** K1. P2. (K2. P2) twice. Work 3rd row of Panel Pat A. (P2. K2) twice. P2. K1.

**4th row:** P1. K2. (P2. K2) twice. Work 4th row of Panel Pat A. (K2. P2) twice. K2. P1. Panel Pat A is now in position.

Cont in pat, keeping cont of Panel Pat A, inc 1 st each end of needle on next and every following 4th row to 48 (48-48-54) sts, then every following 6th row to 62 (66-70-74) sts.

Cont even until work from beg measures 19 (20-20½-21)" [48 (51-52-53.5) cm], ending with a WS row.

**Shape top:** Cast off 3 sts beg next 2 rows. 56 (60-64-68) sts.

**Next row:** K2. ssk. Pat to last 4 sts. K2tog. K2. Work 1 row even in pat. Rep last 2 rows 7 times more. 40 (44-48-52) sts.

**Next row:** K2. ssk. Pat to last 4 sts. K2tog. K2.

**Next row:** P2. P2tog. Pat to last 4 sts. P2togtbl. P2. Rep last 2 rows twice more. 28 (32-36-40) sts.

Cast off 4 sts beg next 2 rows. Cast off rem 20 (24-28-32) sts.

## FINISHING

Pin all garment pieces to measurements and cover with a damp cloth, leaving cloth to dry.

**Collar:** Sew right shoulder seam. With RS of work facing, pick up and knit 18 sts down left front neck edge. Pat 26 sts from front st holder (keeping cont of Panel Pat A). Pick up and knit 18 sts up right front neck edge and 4 sts down right back neck edge. Work in (K2. P2) ribbing across 28 (28-32-32) sts from back st holder.

Pick up and knit 4 sts up right back neck edge. 98 (98-102-102) sts.

**Next row:** (WS). (P2. K2) 14 (14-15-15) times. Pat across next 22 sts. (K2. P2) 5 times.

**Next row:** (K2. P2) 5 times. Pat across next 22 sts. (P2. K2) 14 (14-15-15) times.

Rep last 2 rows until Collar measures 5" [12.5 cm], ending with a WS row. Cast off in pat.

Sew left shoulder and Collar seam.

Sew in Sleeves. Sew side and Sleeve seams.



### Toque

With larger needles and one strand each of A and B, cast on 67 sts.

**1st row:** (RS). K1. \*P1. K1. Rep from \* to end of row.

**2nd row:** P1. \*K1. P1. Rep from \* to end of row.

Rep last 2 rows (K1. P1) ribbing until work from beg measures 8" [20.5 cm], ending with a WS row.

Change to smaller needles and work a further 6 rows in (K1. P1) ribbing. Place a marker at each end of last row.

Proceed in pat as follows:

**1st row:** (RS). K1. P1. \*K3. P1. K1. P1. Rep from \* to last 5 sts. K3. P1. K1.

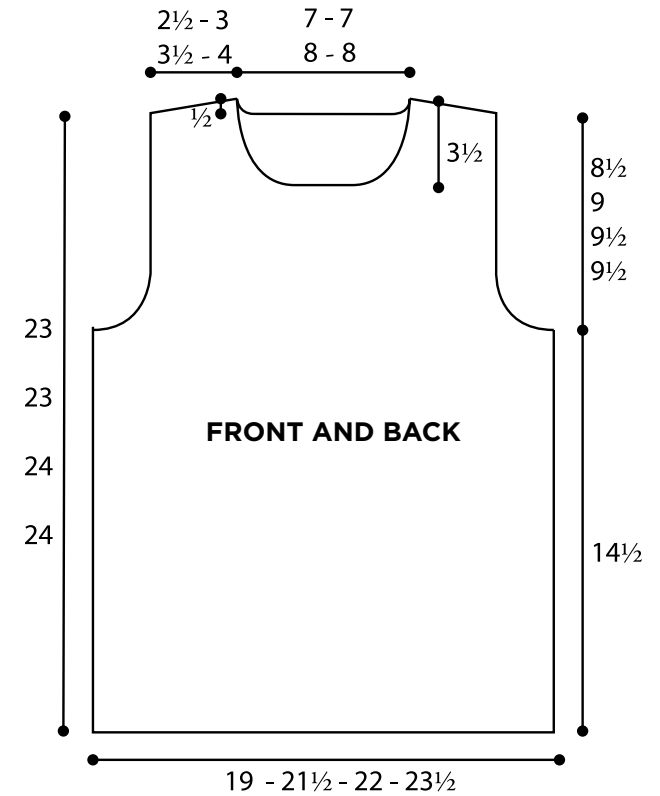
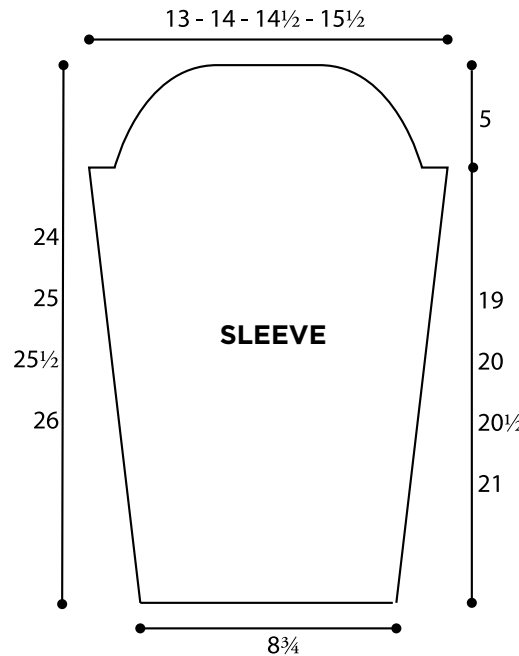
**2nd row:** K1. \*P5. K1. Rep from \* to end of row. These 2 rows form pat.

Cont in pat until work from marker measures 7" [18 cm], ending with a WS row.

**Shape top: Next row:** K2tog. \*K3. Sl1. K2tog. pss0. Rep from \* to last 5 sts. K3. K2tog. 45 sts

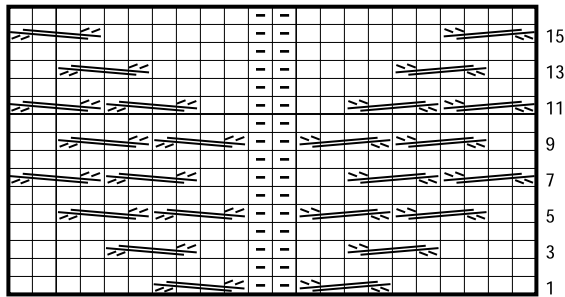
**Next row:** K1. \*P3. K1. Rep from \* to end of row.

**Next row:** K1. \*Sl1. K2tog. pss0. K1. Rep from \* to end of row. 23 sts. Break yarn leaving a long end. Draw end through rem sts tightly and fasten securely. Sew center back seam, reversing seam for cuff turn-back.





PANEL PAT A



Start Here

Key

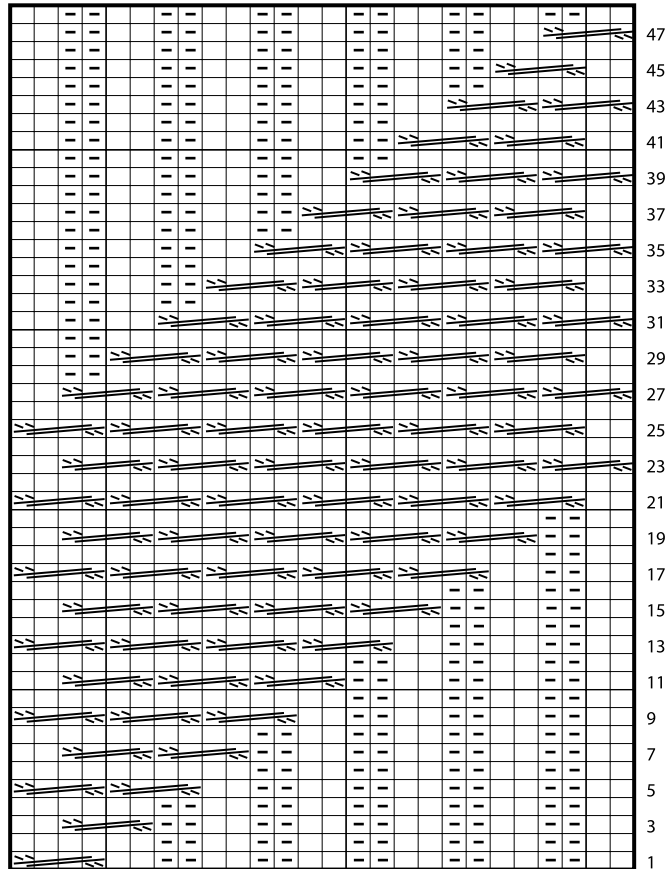
[ ] = Knit on RS, purl on WS

[ - ] = Purl on RS, knit on WS

[ / / / / ] = C4F

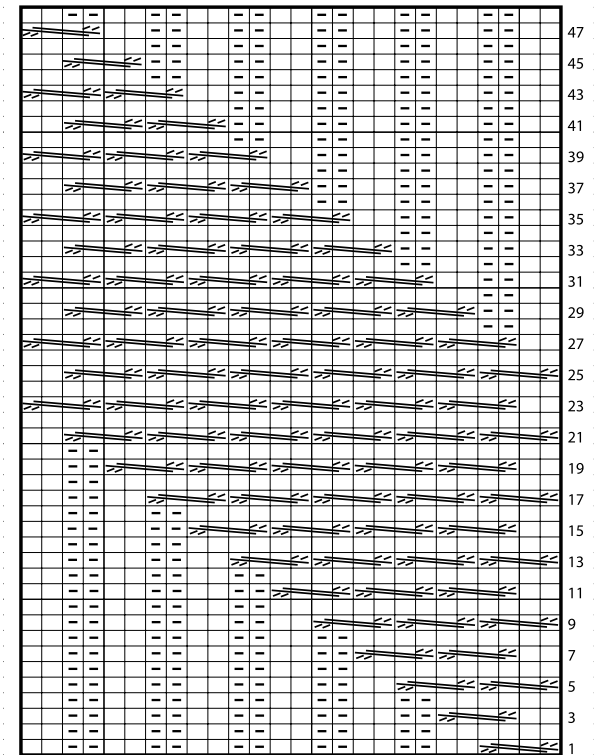
[ \ \ \ \ ] = C4B

PANEL PAT B



Start Here

PANEL PAT C



Start Here