



INTERMEDIATE

SIZE

One size to fit average woman's head.

GAUGE

20 sts and 26 rows = 4" [10 cm] in stocking st.

MATERIALS

Patons® Classic Wool Worsted™ (3.5 oz/100 g; 210 yds/192 m)

Plum Heather (77307) **2 balls**

Size U.S. 7 (4.5 mm) circular knitting needle 16" (40 cm) long. Set of four size U.S. 7 (4.5 mm) double-pointed knitting needles **or size needed to obtain gauge**. Cable needle. Stitch marker.

INSTRUCTIONS

With circular needle, cast on 104 sts. Join in rnd, placing marker on first st, being careful not to twist sts.

1st rnd: *K2. P2. Rep from * around.

Rep 1st rnd of (K2. P2) ribbing until work from beg measures 3" [7.5 cm].

Next rnd: Knit, inc 4 sts evenly around. 108 sts.

1st to 6th rnds: *(K2. P3) 3 times. P6. (P3. K2) 3 times. Rep from * twice more.

Proceed in Cable Pat as follows (see chart on page 2):

1st rnd: *(T3F. P2) 3 times. P6. (P2. T3B) 3 times. Rep from * twice more.

2nd and alt rnds: Knit all knit sts and purl all purl sts as they appear.

3rd rnd: *P1. (T3F. P2) 3 times. P4. (P2. T3B) 3 times. P1. Rep from * twice more.

5th rnd: *P2. (T3F. P2) 3 times. P2. (P2. T3B) 3 times. P2. Rep from * twice more.

7th rnd: *P3. (T3F. P2) 3 times. (P2. T3B) 3 times. P3. Rep from * twice more.

9th rnd: *P4. (T3F. P2) twice. T3F. P2. T3B. (P2. T3B) twice. P4. Rep from * twice more.

11th rnd: *P5. (T3F. P2) twice. T3F. T3B. (P2. T3B) twice. P5. Rep from * twice more.

13th rnd: *P6. (K2. P3) twice. C4F. (P3. K2) twice. P6. Rep from * twice more.

15th rnd: *P6. (K2. P3) twice. K4. (P3. K2) twice. P6. Rep from * twice more.

16th rnd: As 2nd rnd.

17th to 24th rnds: As 13 to 16 rnds twice more.

25th rnd: P6. *(K2. P3) twice. C4F. (P3. K2) twice. P6. Rep from * around.

27th rnd: *P5. (T3B. P2) twice. T3B. T3F. (P2. T3F) twice. P5. Rep from * twice more.

29th rnd: *P4. (T3B. P2) twice. T3B. P2. T3F. (P2. T3F) twice. P4. Rep from * twice more.

31st rnd: *P3. (T3B. P2) 3 times. (P2. T3F) 3 times. P3. Rep from * twice more.

33rd rnd: *P2. (T3B. P2) 3 times. P2. (P2. T3F) 3 times. P2. Rep from * twice more.



35th rnd: *P1. (T3B. P2) 3 times. P4. (P2. T3F) 3 times. P1. Rep from * twice more.

36th rnd: *(T3B. P2) 3 times. P6. (P2. T3F) 3 times. Rep from * twice more.

37th and 38th rnds: *(K2. P3) 3 times. P6. (P3. K2) 3 times. Rep from * around.

Note: Change to set of 4 double-pointed needles when necessary.

Shape crown: 1st rnd: *(K2tog. P3) 3 times. P6. (P3. K2tog) 3 times. Rep from * twice more. 90 sts.

2nd rnd: Knit all knit sts and purl all purl sts as they appear.

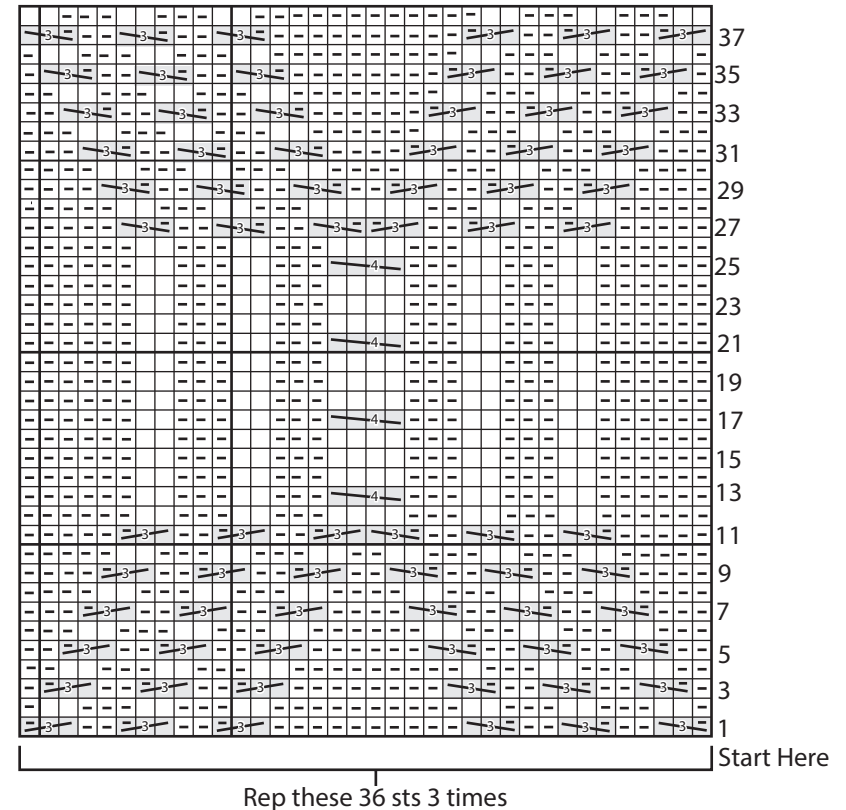
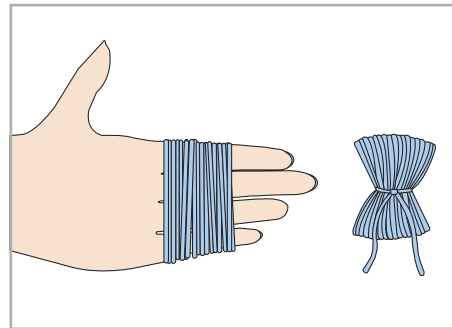
3rd rnd: *P2tog. P3. Rep from * around. 72 sts.

4th rnd: *P2tog. P2. Rep from * around. 54 sts.

5th rnd: *P2tog. P1. Rep from * around. 36 sts.

6th rnd: *P2tog. Rep from * around. 18 sts. Break yarn, leaving a long end. Draw yarn through rem sts. Pull tightly. Fasten securely.

Pompom: Wind yarn around 4 fingers 120 times. Tie tightly in the middle and leave a long end for attaching to top of Hat. Cut loops at both ends and trim to form pompom.
Sew to top of Hat.



ABBREVIATIONS: www.yarnspirations.com/abbreviations

- Alt** = Alternate(ing)
- Beg** = Beginning
- C4F** = Slip next 2 stitches onto cable needle and leave at front of work. K2, then K2 from cable needle.
- Inc** = Increase(ing)
- K** = Knit
- K2tog** = Knit next 2 stitches together
- P** = Purl
- P2tog** = Purl next 2 stitches together
- Pat** = Pattern
- Rem** = Remaining
- Rep** = Repeat
- Rnd(s)** = Round(s)
- St(s)** = Stitch(es)

- T3B** = Slip next stitch onto cable needle and leave at back of work. K2, then P1 from cable needle.
- T3F** = Slip next 2 stitches onto cable needle and leave at front of work. P1, then K2 from cable needle.

Key

- = Knit
- = Purl
- = T3B
- = T3F
- = C4F