

# Patons® Classic Wool



## PATONS® CLASSIC WOOL FAIR ISLE TAM (TO KNIT)

### MEASUREMENTS

One size to fit head circumference 21 to 22 ins [53.5 to 56 cm]

### MATERIALS

Patons® Classic Wool  
(100 g/3.5 oz; 205 m/223 yds)

#### 1 ball each of:

**Contrast A:** (00212 Royal Purple)

**Contrast B:** (77308 Wisteria)

**Contrast C:** (00216 Navy)

**Contrast D:** (00240 Leaf Green)

**Contrast E:** (00204 Old Gold)

Set of 5 size 4.5 mm (U.S. 7) double pointed knitting needles **or size needed to obtain gauge.** St markers.

**Note:** Set of 5 needles works best for even stitch distribution and keeping work in quadrants.

**GAUGE:** 20 sts and 26 rows = 4 ins [10 cm] in stocking st.

### ABBREVIATION

**Center dec** (worked over 3 sts) = slip next 2 sts as if to K2tog, K1, then pass slipped sts over knit st – center of 3 sts should be on top of decrease. (2 sts have been decreased).

### INSTRUCTIONS

**Note:** When working from charts carry yarn not in use loosely across WS of work but never over more than 5 sts. When it must pass over more than 5 sts, weave it under and over center st it passes over. The colors are never twisted around each other.

With A, cast on 92 sts. Divide sts evenly on 4 needles (20, 24, 24, 24). Place marker to mark beg of rnd.

**1st rnd:** \*K2. P2. Rep from \* to end.

Rep last rnd 6 times more.

**Next rnd:** \*K8. M1. Rep from \* to last 4 sts.

K4. M1. 104 sts.

Knit 3 rnds even.

**Next rnd:** \*With D, K1. With A, K1. Rep from \* to end.

With A, knit 1 rnd.

**Next rnd (inc rnd):** \*K13. M1. Rep from \* around. 112 sts.

With A, knit 1 rnd.

Work Chart I, noting 14 st rep will be worked 8 times.

With A, knit 1 rnd.

**Next rnd (inc rnd):** \*K4. M1. Rep from \* to end. 140 sts.

**Next rnd:** \*With D, K1. With A, K1. Rep from \* to end.

**Next 2 rnds:** With D, knit.

Work rows 1 to 6 of Chart 2 in fair isle noting 20 st rep will be worked 7 times.

To begin shaping, slip rnd marker back 1 st at end of last rnd.

**Note:** The last stitch of round worked before Center dec (which becomes first st on new round) should not be knit. This stitch will be grouped with next two stitches to work the first Center dec of the new round.

**7th rnd:** \*With B, Center dec. With C, K7. With B, K3. With C, K7. Rep from \* around. 126 sts rem.

**8th rnd:** \*With B, K2. With C, K4. (With B, K1. With C, K2) twice. With B, K1. With C, K4. With B, K1. Rep from \* around.

Slip rnd marker back 1 st at end of last rnd.

**9th rnd:** \*With B, Center dec. K1. With C, K2. With B, K3. With C, K3. With B, K3. With C, K2. With B, K1. Rep from \* around. Rep from \* around. 112 sts rem.

**10th rnd:** \*With B, K3. (With C, K2. With B, K1) 3 times. With C, K2. With B, K2.

Slip rnd marker back 1 st at end of last rnd.

Cont in this manner, working Center dec at beg of 11th, 13th, 15th, 17th, 19th, 21st and 23rd rows of chart and shifting rnd marker back 1 st at end of every alt rnd. 14 sts rem. Break C and draw tightly through rem sts.

**FINISHING:** Weave in ends. Cut a circle of cardboard with a 13 ins [33 cm] circumference. Insert cardboard, steam hat (excluding ribbing) and dry flat.

Chart I

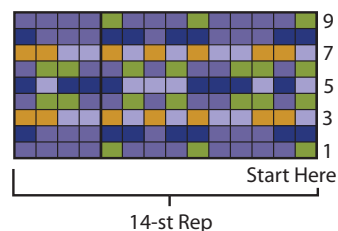
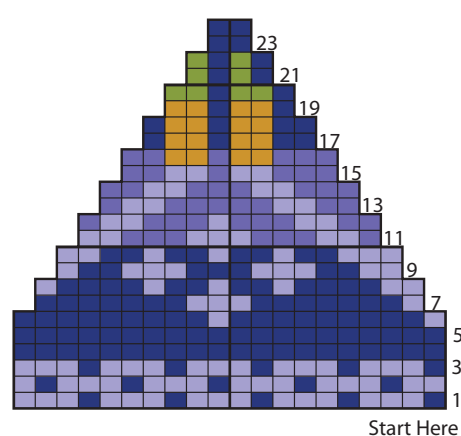


Chart II



### Key

- = Contrast A
- = Contrast B
- = Contrast C
- = Contrast D
- = Contrast E



ABBREVIATIONS: [www.patonsyarns.com/glossary](http://www.patonsyarns.com/glossary)

Patons®

... a part of your life.

P.O. Box 40, Listowel ON N4W 3H3