



MATERIALS

Patons® Classic Wool DK Superwash™ (1.75 oz/50 g; 125 yds/114 m)

Contrast A Claret (12532) **2 balls**

Contrast B Cork (12012) **1 ball**

Set of 5 sizes U.S. 4 (3.5 mm) and U.S. 6 (4 mm) double-pointed knitting needles or size needed to obtain gauge. Stitch marker.

ABBREVIATIONS: www.yarnspirations.com/abbreviations

Approx = Approximate(ly)	K2tog = Knit next 2 stitches together	Rep = Repeat
Beg = Beginning		Rnd(s) = Round(s)
Inc = Increase(ing)	P = Purl	St(s) = Stitch(es)
K = Knit	Pat = Pattern	WS = Wrong side
	Rem = Remaining	



INTERMEDIATE

SIZE

One size to fit average Woman's head.

GAUGE

22 sts and 28 rows = 4" [10 cm] in stocking st with larger needles.

INSTRUCTIONS

Note: When working from chart, carry colors not in use loosely across WS of work. When colors pass over more than 5 sts, weave it over and under center st of color it passes over. The colors are never twisted around one another.

With MC and smaller needles, cast on 104 sts. Divide sts on 4 needles as (26, 26, 26, 26) sts. Join in rnd, placing a marker on first st.

1st rnd: *K2. P2. Rep from * around.

Rep last rnd of (K2. P2) ribbing for 5½" [14 cm] and inc 4 sts evenly around last rnd. 108 sts.

Change to larger needles.

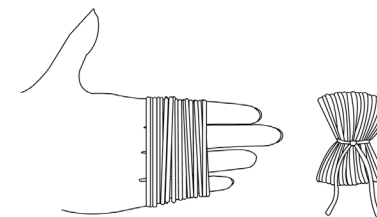
With B, knit 2 rnds.

Work Chart in fair isle to end of chart (knit every rnd), reading rnds from right to left, noting 12-st rep will be worked 9 times. (See Chart on page 2). 54 sts rem. Break B.

Next rnd: With A, *K1. K2tog. Rep from * around. 36 sts.

Next rnd: *K2tog. Rep from * around. 18 sts. Break yarn leaving a long end. Draw end tightly through rem sts.

Pom-pom: Wind A around four fingers approx 150 times. Remove from fingers and tie tightly in center. Cut through each side of loops. Trim to a smooth round shape. Sew pom-pom to top of Hat. Fold cuff in half to RS.



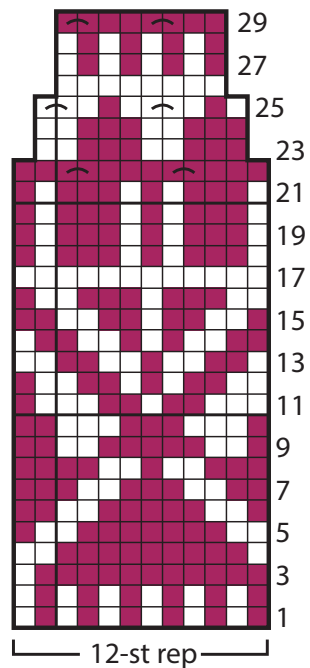


Key

■ = Contrast A

□ = Contrast B

⊞ = K2tog



CHART