



INSTRUCTIONS

Note: When working from charts, carry colors not in use loosely across WS of work. The colors are never twisted around one another.

With MC and smaller needles, cast on 96 sts.

Divide sts on 4 needles as (24, 24, 24, 24) sts. Join in rnd, placing a marker on first st. Work 1¼" [3 cm] in (K2, P2) ribbing.

Change to larger needles and knit 2 rnds, inc 8 sts evenly across 2nd rnd. 104 sts.

Work Chart I to end of chart, *reading rnds from right to left*, noting 4 st rep will be worked 26 times.

Next rnd: With A, *K4, K2tog, K5, K2tog. Rep from * around. 88 sts.

Work Chart II to end of chart, *reading rnds from right to left*, noting 8 st rep will be worked 11 times. 44 sts rem.

Next rnd: With MC, *K3tog. Rep from * to last 2 sts. K2. 16 sts. Break yarn leaving a long end. Draw end tightly through rem sts.

PATONS® CLASSIC WOOL DK SUPERWASH™ COLOR FUSION CAP (TO KNIT)

SIZE

One size to fit average woman's head.

MATERIALS

Patons® Classic Wool DK Superwash™ (50 g/1.75 oz; 114 m/125 yds)

Main Color (MC) Magenta (12402)	1 ball
Contrast A Eggplant (12310)	1 ball
Contrast B Gold (12609)	1 ball
Contrast C Pink (12420)	1 ball
Contrast D Flagstone (12011)	1 ball

Set of five sizes 3.5 mm (U.S. 4) and 4 mm (U.S. 6) double-pointed knitting needles **or size needed to obtain tension**. Stitch marker.

TENSION

22 sts and 28 rows = 4" [10 cm] in stocking st with larger needles.

STITCH GLOSSARY

www.patonsyarns.com/abbreviations

CHART I

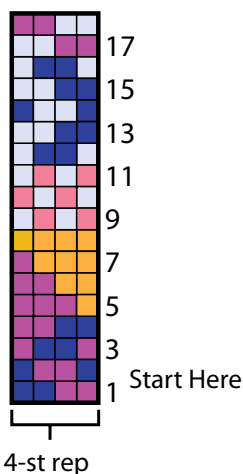
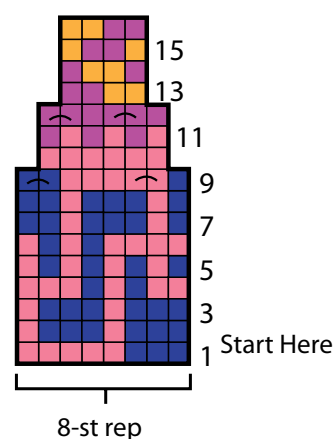


CHART II



KEY

= With MC, K2tog	= MC
= With A, K2tog	= A
= With C, K2tog	= B
	= C
	= D

Patons®
Classic Wool
DK SUPERWASH™
...a part of your life.

P.O. Box 40, Listowel ON N4W 3H3

www.patonsyarns.com



COLOR FUSION CAP 1