



**PATONS® SHETLAND CHUNKY™
FAIR ISLE ICE CAP (TO KNIT)**

SIZE

One size to fit average woman's head.

MATERIALS

Patons® Shetland Chunky™
(100 g/3.5 oz; 136 m/148 yds)
Contrast A White (78006)
Contrast B Peacock (78734)

1 ball
1 ball

Set of four sizes 5.5 mm (U.S. 9) and 6 mm (U.S. 10) double-pointed knitting needles **or size needed to obtain tension.** Stitch marker.

TENSION

15 sts and 20 rows = 4" [10 cm] in stocking st.

STITCH GLOSSARY

www.patonsyarns.com/abbreviations

- Alt** = Alternate(ing)
- Inc** = Increase 1 stitch by knitting into front and back of next stitch
- K** = Knit
- K2tog** = Knit next 2 stitches together
- P** = Purl
- Pat** = Pattern
- Rem** = Remaining
- Rep** = Repeat
- Rnd(s)** = Round(s)
- Ssk** = Slip next 2 stitches knitwise one at a time. Pass them back onto left-hand needle, then knit through back loops together
- St(s)** = Stitch(es)
- WS** = Wrong side

INSTRUCTIONS

Note: When working from chart, with B and set of smaller double-pointed needles, cast on 80 sts. Join in rnd, placing marker on first st. Break B.

1st rnd: *With A, K2. P2. Rep from * around. Rep last rnd 3 times more, inc 4 sts evenly across last rnd. 84 sts.

Change to set of larger double-pointed needles and knit Chart I to end of chart, *reading rnds from right to left*, noting 4-st rep will be worked 21 times.

Shape top: Knit Chart II to end of chart, *reading rnds from right to left*, noting 21-st rep will be worked 4 times as follows:

1st rnd: *ssk. Pat across 17 sts. K2tog. Rep from * 3 times more. 76 sts.

2nd and alt rnds: Work even in pat.

3rd rnd: *ssk. Pat across 15 sts. K2tog. Rep from * 3 times more. 68 sts.

5th rnd: *ssk. Pat across 13 sts. K2tog. Rep from * 3 times more. 60 sts.

7th rnd: *ssk. Pat across 11 sts. K2tog. Rep from * 3 times more. 52 sts.

9th rnd: *ssk. Pat across 9 sts. K2tog. Rep from * 3 times more. 44 sts.

11th rnd: *ssk. Pat across 7 sts. K2tog. Rep from * 3 times more. 36 sts.

13th rnd: *ssk. K5. K2tog. Rep from * 3 times more. 28 sts.

15th rnd: *ssk. K3. K2tog. Rep from * 3 times more. 20 sts. Break yarn leaving a long end. Draw end tightly through rem sts and fasten securely.

Pom-pom: Wind A around 4 fingers 60 times. Tie tightly in the middle and leave a long end for attaching to Hat. Cut loops at both ends and trim to form pom-pom. Sew to top of Hat.

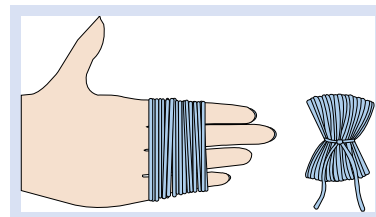
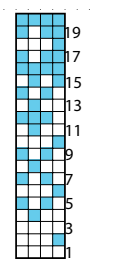
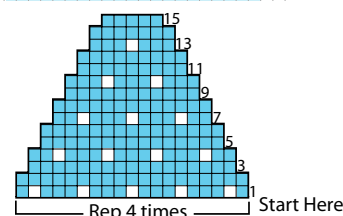


CHART I



4-st rep
Start Here

CHART II



Start Here

KEY

- = Contrast A
- = Contrast B



...a part of your life.

P.O. Box 40, Listowel ON N4W 3H3

www.patonsyarns.com



FAIR ISLE ICE CAP

1 of 1