



# **PATONS® CLASSIC WOOL WORSTED™** **CELTIC FAIR ISLE BERET (TO KNIT)**

## **SIZE**

One size to fit average woman's head.

## **MATERIALS**

**Patons® Classic Wool Worsted™** (100 g/3.5 oz; 192 m/210 yds)

**Main Color (MC)** Moss Heather (77525)

**Contrast A** Natural Mix (00229)

**1 ball**

**1 ball**

Sizes 4 mm (U.S. 6) and 4.5 mm (U.S. 7) circular knitting needles 16" [40 cm] long. Set of four size 4.5 mm (U.S. 7) double-pointed knitting needles **or size needed to obtain tension**. Stitch marker.

## **TENSION**

20 sts and 26 rows = 4" [10 cm] with larger needles in stocking st.

## **STITCH GLOSSARY**

[www.patonsyarns.com/abbreviations](http://www.patonsyarns.com/abbreviations)

**Cont** = Continue(ity)

**Dec** = Decrease(ing)

**Inc** = Increase 1 stitch by knitting into front and back of next stitch

**K** = Knit

**K2tog** = Knit next 2 stitches together

**M1** = Make 1 stitch by picking up horizontal loop lying before next stitch and knitting into back of loop

**P** = Purl

**Pat** = Pattern

**Rem** = Remaining

**Rep** = Repeat

**Rnd(s)** = Round(s)

**Ssk** = Slip next 2 stitches knitwise one at a time. Pass them back onto left-hand needle, then knit through back loops together

**St(s)** = Stitch(es)

**Tog** = Together

**WS** = Wrong side



## **INSTRUCTIONS**

**Note:** When working from chart, carry yarn not in use loosely across WS of work but never over more than 5 sts. When it must pass over more than 5 sts, weave it over and under color in use on next st at center point of sts it passes over. The colors are never twisted around one another.

## **HAT**

With smaller circular needle and A, cast on 96 sts. Join in rnd, placing marker on first st.

**1st rnd:** (With MC, K2. With A, K2) 24 times.

**2nd to 8th rnds:** (With MC, K2. With A, P2) 24 times.

Change to larger circular needle and proceed as follows:

**1st rnd:** (Braided rnd). With MC, P1. \*Bring A **under** MC and P1. Bring MC **under** B and P1 (this **twists** yarn as you purl across). Rep from \* to last st. Bring A **under** MC and P1.

**2nd rnd:** With MC, (K2. M1. K3. M1) 18 times. (K1. M1. K2. M1) twice. 136 sts.

Proceed as follows:

**1st rnd:** Knit 1st row of Chart I, *reading row from **right** to **left***, noting 34-st rep will be worked 4 times.

Chart I is now in position.

Cont working Chart I to end of chart.

**Shape top:** Knit Chart II to end of chart, *reading rows from **right** to **left*** and shaping top as follows:

**Note:** Change to set of four double-pointed needles when necessary.

**1st rnd:** \*ssk. Pat across 28 sts. K2tog. With A, K2. Rep from \* 3 times more. 128 sts.

**2nd rnd:** \*ssk. Pat across 26 sts. K2tog. With A, K2. Rep from \* 3 times more. 120 sts.

**3rd rnd:** \*ssk. Pat across 24 sts. K2tog. With A, K2. Rep from \* 3 times more. 112 sts.

**4th rnd:** \*ssk. Pat across 22 sts. K2tog. With A, K2. Rep from \* 3 times more. 104 sts.

**5th rnd:** \*ssk. Pat across 20 sts. K2tog. With A, K2. Rep from \* 3 times more. 96 sts.

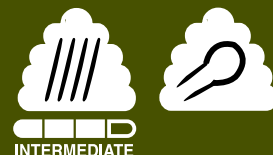
Keeping cont of Chart II, dec 8 sts on every rnd, as before, to 16 sts. Break yarn, leaving a long end. Draw end through rem sts tightly and fasten securely.

**Patons®**  
*Classic Wool*  
**WORSTED™**

*...a part of your life.*

P.O. Box 40, Listowel ON N4W 3H3

[www.patonsyarns.com](http://www.patonsyarns.com)



CELTIC FAIR ISLE BERET

1 of 2

CHART I

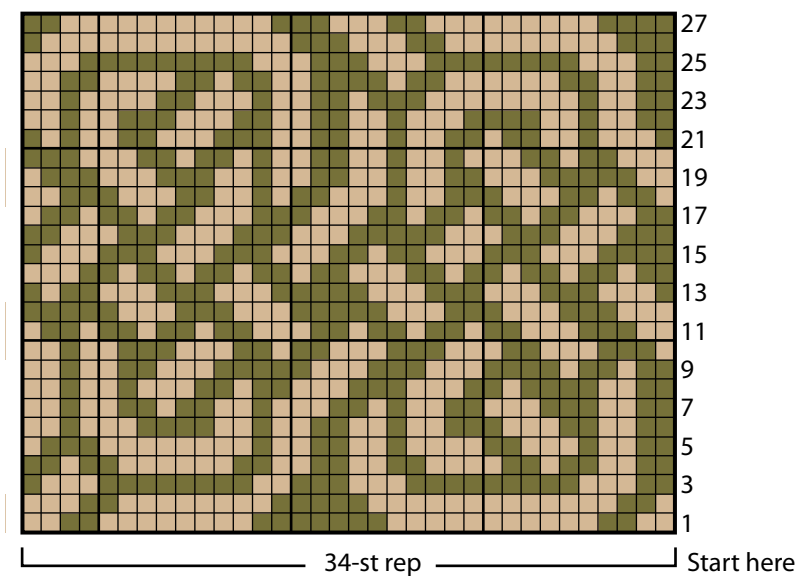
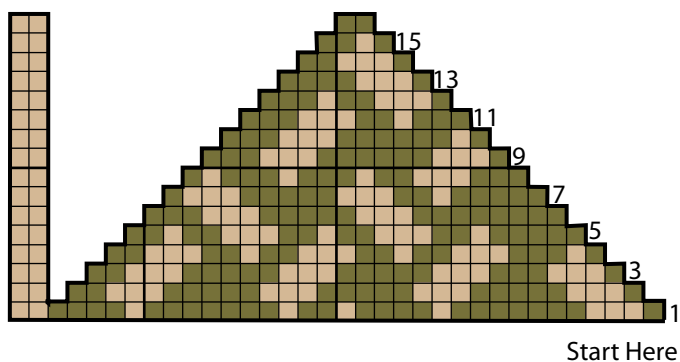


CHART II



KEY

- = Main Color (MC)
- = Contrast A

**Patons**  
*Classic Wool*  
 WORSTED™

*...a part of your life.*  
 P.O. Box 40, Listowel ON N4W 3H3

[www.patonsyarns.com](http://www.patonsyarns.com)



CELTIC FAIR ISLE BERET

2 of 2