



MATERIALS

Patons® Classic Wool™ Worsted (3.5 oz/100 g; 210 yds/192 m)

Main Color (MC) Pretty in Pink (77416)

1 ball

Contrast A Dark Grey Mix (00225)

1 ball

Sizes U.S. 5 (3.75 mm) and U.S. 6 (4 mm) knitting needles or size needed to obtain gauge. Stitch holder.

ABBREVIATIONS:

Alt = Alternate(ing)

Beg = Beginning

Cont = Continue(ity)

Inc = Increase(ing)

K = Knit

K2tog = Knit next 2 stitches together

Kfb = Knit into front and

back of next stitch-
increase made

P = Purl

P2tog = Purl next 2
stitches together

Rem = Remaining

Rep = Repeat

RS = Right side

Ssk = Slip next 2 stitches

knitwise one at a time.
Pass them back onto
left-hand needle, then
knit through back loops
together

St(s) = Stitch(es)

Tog = Together

WS = Wrong side

 KNIT | SKILL LEVEL: EASY

SIZE

One size to fit average woman's palms.

GAUGE

22 sts and 28 rows = 4" [10 cm]
with larger needles in stocking st.

INSTRUCTIONS

With MC and smaller needles, cast on 42 sts.

1st row: K1. *K2. P2. Rep from * to last st. K1.

2nd row: P1. *K2. P2. Rep from * to last st. P1.

Rep last 2 rows of (K2. P2) ribbing for 2½" [6 cm], inc 2 sts evenly across last row and ending on a 2nd row. 44 sts.

Change to larger needles and proceed in stocking st for 6 rows.**

Shape thumb gusset: 1st row: (RS). K23. (Kfb) twice. Knit to end of row. 46 sts.

2nd and alt rows: Purl.

3rd row: K23. Kfb. K2. Kfb. Knit to end of row. 48 sts.

5th row: K23. Kfb. K4. Kfb. Knit to end of row. 50 sts.

7th row: K23. Kfb. K6. Kfb. Knit to end of row. 52 sts.

9th row: K23. Kfb. K8. Kfb. Knit to end of row. 54 sts.

11th row: K23. Kfb. K10. Kfb. Knit to end of row. 56 sts.

13th row: K37. **Turn.** Cast on 2 sts. Leave rem sts on a st holder.

*****Thumb: Next row:** P16. **Turn.**

Cont even until Thumb from cast on row measures 2¼" [5.5 cm], ending on a purl row.

Next row: (RS). *K2tog. Rep from * to end of row. 8 sts.

Next row: (P2tog) 4 times. 4 sts. Break yarn, leaving a long end. Thread end through rem sts. Draw up and fasten securely. Sew Thumb seam.

With RS facing, join MC to rem sts on st holder and knit to end of row.

Next row: Purl, picking up 2 sts purlwise at base of Thumb. 44 sts.

Cont even until work after ribbing measures 6" [15 cm], ending on a purl row.

Shape top: 1st row: (RS). K1. (K1. ssk. K15. K2tog. K1) twice. K1. 40 sts.

2nd and alt rows: Purl.

3rd row: K1. (K1. ssk. K13. K2tog. K1) twice. K1. 36 sts.

5th row: K1. (K1. ssk. K11. K2tog. K1) twice. K1. 32 sts.

7th row: K1. (K1. ssk. K9. K2tog. K1) twice. K1. 28 sts.

9th row: K1. (K1. ssk. K7. K2tog. K1) twice. K1. 24sts.

11th row: K1. (K1. ssk. K5. K2tog. K1) twice. K1. 20 sts.

13th row: K1. (K1. ssk. K3. K2tog. K1) twice. K1. 16 sts.

Graft 2 sets of 8 sts tog.***

With A, work duplicate st embroidery (KISS or word of choice) on Front of Mitten beg 2 rows above ribbing. Sew side seam.

LEFT MITTEN

Work from ** to ** as given for Right Mitten.

Shape thumb gusset: 1st row: K19. (Kfb) twice. Knit to end of row. 46 sts.

2nd and alt rows: Purl.

3rd row: K19. Kfb. K2. Kfb. Knit to end of row. 48 sts.

5th row: K19. Kfb. K4. Kfb. Knit to end of row. 50 sts.

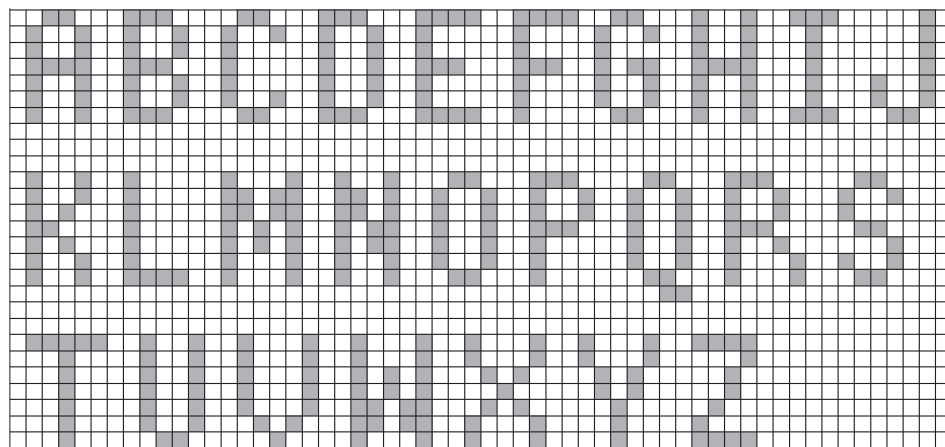
7th row: K19. Kfb. K6. Kfb. Knit to end of row. 52 sts.

9th row: K19. Kfb. K8. Kfb. Knit to end of row. 54 sts.

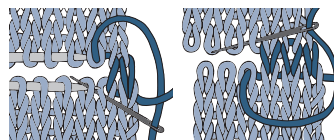
11th row: K19. Kfb. K10. Kfb. Knit to end of row. 56 sts.

13th row: K33. **Turn.** Cast on 2 sts. Leave rem sts on a st holder.

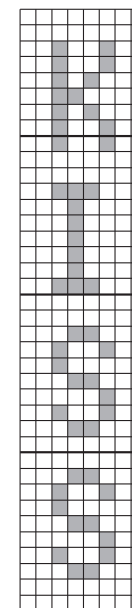
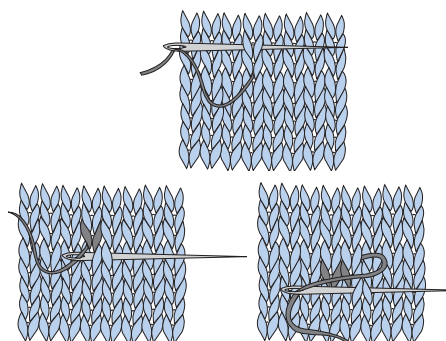
Work from *** to *** as given for Right Mitten. With A, work duplicate st embroidery (TELL or word of choice) on Front of Mitten beg 2 rows above ribbing. Sew side seam.



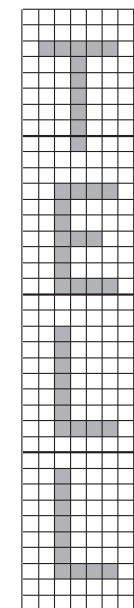
Grafting Diagram



Duplicate Stitch Diagram



Right Mitten



Left Mitten