



Version A



Version B



Version C

MATERIALS

Version A: Patons® Classic Wool DK Superwash™

Main Color (MC) Heath Heather (12015) **2 balls**
Contrast A Gold (12609) **2 balls**

Size U.S. 6 (4 mm) circular knitting needle 24" [60 cm] long **or size needed to obtain gauge.** Stitch marker.

Version B: Patons® Classic Wool Worsted™

Main Color (MC) Taupe (00227) **1 ball**
Contrast A Seafoam (77219) **1 ball**

Size U.S. 7 (4.5 mm) circular knitting needle 24" [60 cm] long **or size needed to obtain gauge.** Stitch marker.

Version C: Patons® Classic Wool Roving™

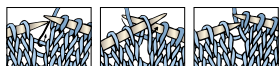
Main Color (MC) Natural (77010) **1 ball**
Contrast A Cherry (77709) **1 ball**

Size U.S. 10 (6 mm) circular knitting needle 24" [60 cm] long **or size needed to obtain gauge.** Stitch marker.

ABBREVIATIONS:

Approx = Approximately
K = Knit
K2tog = Knit next 2 stitches together

M1 = Make 1 stitch by picking up horizontal loop lying before next stitch and knitting into back of loop.



P = Purl
Pat = Pattern
Rep = Repeat
Rnd(s) = Round(s)
St(s) = Stitch(es)
WS = Wrong side

KNIT | SKILL LEVEL: INTERMEDIATE

MEASUREMENTS

Version A: Patons® Classic Wool DK Superwash™

Approx 9" [23 cm] deep x 28" [71 cm] around.

Version B: Patons® Classic Wool Worsted™

Approx 9½" [24 cm] deep x 27" [68.5 cm] around.

Version C: Patons® Classic Wool Roving™

Approx 10" [25.5 cm] deep x 27" [68.5 cm] around.

GAUGE

Version A: Patons® Classic Wool DK Superwash™

22 sts and 28 rows = 4" [10 cm] in stocking st.
 25 sts and 26 rows = 4" [10 cm] in Fair Isle Pat.

Version B: Patons® Classic Wool Worsted™

20 sts and 26 rows = 4" [10 cm] in stocking st.
 21½ sts and 24 rows = 4" [10 cm] in Fair Isle Pat.

Version C: Patons® Classic Wool Roving™

15 sts and 20 rows = 4" [10 cm] in stocking st.
 16 sts and 19 rows = 4" [10 cm] in Fair Isle Pat.

INSTRUCTIONS

The instructions are written for Version A. If changes are necessary for Versions B or C, the instructions will be written thus (). Numbers for each Version are shown in the same color throughout the pattern. When only one number is given in black, it applies to all Versions.

Note: When working from chart, carry yarn not in use loosely across WS of work. The colors are never twisted around one another.

With MC, cast on **152 (136-104)** sts. Join in rnd, placing a marker on first st.

1st rnd: *K2. P2. Rep from * around.
 Rep last rnd of (K2. P2) ribbing **5 (4-3)** times more.

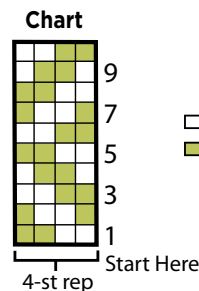
Next rnd: [Rib **9 (11-13)**. M1] **16 (12-8)** times. Rib to end of rnd. **168 (148-112)** sts.

Next rnd: Knit.

Next rnd: Work Chart to end of chart, reading rnds from right to left, noting 4-st rep will be worked **42 (37-28)** times.

Rep rnds 1 to 10 of Chart **4 (3-2)** times more.
Next rnd: With MC, [K**8 (10-12)**. K2tog] **16 (12-8)** times. K**8 (4-0)**. **152 (136-104)** sts.

With MC, work **7 (6-5)** rnds in (K2. P2) ribbing. Cast off in ribbing.



Key
 □ = Main Color (MC)
 ■ = Contrast A