



MATERIALS

Patons® Shetland Chunky™ (3.5 oz/100 g; 148 yds/136 m)
Toasty Grey (78044) **2 balls**

Size U.S. 10 (6 mm) circular knitting needle 24" [60 cm] long **or size needed to obtain gauge.**
Stitch marker.

ABBREVIATIONS:

Approx = Approximately
K = Knit

P = Purl
Rep = Repeat

Rnd(s) = Round(s)
St(s) = Stitch(es)



KNIT | SKILL LEVEL: EASY

MEASUREMENTS

Approx 10½" [26.5 cm] deep x 25.5" [65 cm] around.

GAUGE

15 sts and 20 rows = 4" [10 cm] in stocking st.

INSTRUCTIONS

COWL

Cast on 96 sts. Join in rnd, placing marker on first st. (See Chart on page 2).

1st and 2nd rnds: *K1. P1. Rep from * around.

3rd and 4th rnds: *P1. K1. Rep from * around.

5th and 6th rnds: *K6. P6. Rep from * around.

7th and 8th rnds: *P1. K5. P5. K1. Rep from * around.

9th and 10th rnds: *K1. P1. K4. P4. K1. P1. Rep from * around.

11th and 12th rnds: *P1. K1. P1. K3. P3. K1. P1. K1. Rep from * around.

13th and 14th rnds: *(K1. P1) twice. K2. P2. (K1. P1) twice. Rep from * around.

15th and 16th rnds: *P1. K1. Rep from * around.

17th and 18th rnds: *K1. P1. Rep from * around.

19th and 20th rnds: *(P1. K1) twice. P2. K2. (P1. K1) twice. Rep from * around.

21st and 22nd rnds: *K1. P1. K1. P3. K3. P1. K1. P1. Rep from * around.

23rd and 24th rnds: *P1. K1. P4. K4. P1. K1. Rep from * around.

25th and 26th rnds: *K1. P5. K5. P1. Rep from * around.

27th and 28th rnds: *P6. K6. Rep from * around.

29th and 30th rnds: *P5. K1. P1. K5. Rep from * around.

31st and 32nd rnds: *P4. (K1. P1) twice. K4. Rep from * around.

33rd and 34th rnds: *P3. (K1. P1) 3 times. K3. Rep from * around.

35th and 36th rnds: *P2. (K1. P1) 4 times. K2. Rep from * around.

37th and 38th rnds: *P1. K1. Rep from * around.

39th and 40th rnds: *K1. P1. Rep from * around.

41st and 42nd rnds: *K2. (P1. K1) 4 times. P2. Rep from * around.

43rd and 44th rnds: *K3. (P1. K1) 3 times. P3. Rep from * around.

45th and 46th rnds: *K4. (P1. K1) twice. P4. Rep from * around.

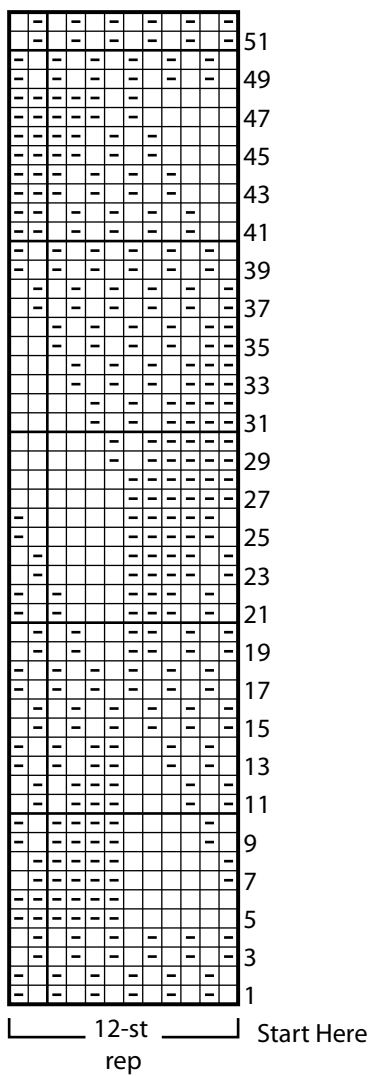
47th and 48th rnds: *K5. P1. K1. P5. Rep from * around.

49th and 50th rnds: *K1. P1. Rep from * around.

51st and 52nd rnds: *P1. K1. Rep from * around.

Cast off.

Chart



Key

□ = Knit

◻ = Purl