



KNIT | SKILL LEVEL: INTERMEDIATE



Marly Bird  
from Marly Bird



## MATERIALS

Patons® Classic Wool Worsted™ (3.5 oz/100 g; 194 yds/177 m)

Sizes	XS/M	L/XL	2/3XL	4/5XL	
<b>Contrast A</b>	2	2	3	3	<b>balls</b>
Indigo (77772)	325/295	360/325	410/375	435/395	<b>yds/m</b>
<b>Contrast B</b>	1	1	1	1	<b>ball</b>
Rich Raspberry (77783)	99/90	110/100	121/110	132/120	<b>yds/m</b>
<b>Contrast C</b>	1	1	1	1	<b>ball</b>
Pumpkin (77605)	44/40	50/45	55/50	60/55	<b>yds/m</b>
<b>Contrast D</b>	1	1	1	1	<b>ball</b>
Sprout (77759)	63/57	68/62	74/67	80/72	<b>yds/m</b>
<b>Contrast E</b>	1	1	1	1	<b>ball</b>
Rich Grass (77764)	99/90	110/100	121/110	132/120	<b>yds/m</b>
<b>Contrast F</b>	1	1	1	1	<b>ball</b>
Seafoam (77219)	66/60	72/65	77/70	83/75	<b>yds/m</b>
<b>Contrast G</b>	1	1	1	1	<b>ball</b>
Rich Teal (77768)	77/70	85/77	93/84	99/90	<b>yds/m</b>
<b>Contrast H</b>	1	1	1	1	<b>ball</b>
Aran (00202)	120/108	130/118	141/128	152/138	<b>yds/m</b>
<b>Contrast I</b>	1	1	1	1	<b>ball</b>
Brown Mustard (77757)	99/90	110/100	121/110	132/120	<b>yds/m</b>

Size U.S. 9 [5.5 mm] Susan Bates® circular knitting needles 16" [40.5 cm] and 29" [73.5 cm] long **or size needed to obtain gauge**. Susan Bates® stitch marker. Susan Bates® yarn needle.

## ABBREVIATIONS

**Approx** = Approximately

**Beg** = Beginning

**Rep** = Repeat

**RS** = Right side

**WS** = Wrong side

**Inc** = Increase(ing)

**K** = Knit

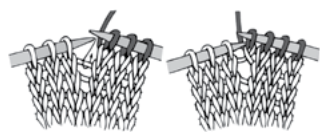
**Kfb** = Increase 1 stitch by knitting into front and back of next stitch

**P** = Purl

**PM** = Place marker

**Kfb** = Increase 1 stitch by knitting into front and back of next stitch

**M1** = Make 1 stitch by picking up horizontal loop lying before next stitch and knitting into back of loop



**PM** = Place marker

**Rnd(s)** = Round(s)

**SM** = slip marker

**Tog** = Together

**W&T** = Bring yarn to front of work.

Slip next stitch purlwise. Bring yarn to back of work. Slip stitch back onto left-hand needle. Turn.



## SIZES

**To fit chest measurement**

**XS/S/M** 28-38" [71-96.5 cm]

**L/XL** 40-46" [101.5-117 cm]

**2/3XL** 48-54" [122-137 cm]

**4/5XL** 56-62" [142-157.5 cm]

## GAUGE

20 sts and 24 rnds = 4" [10 cm] in Fair Isle knitting stocking st.

## INSTRUCTIONS

### Week 4 - Lower Body & Ribbing

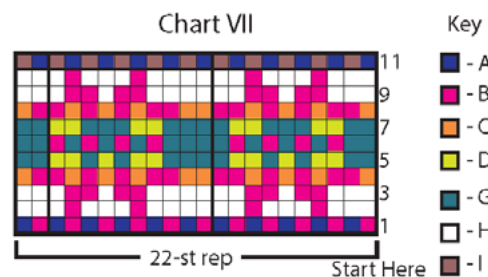
The instructions are written for smallest size. If changes are necessary for larger size(s) the instructions will be written **XS/S/M** (**L/XL-2/3XL-4/5XL**). Numbers for each size are shown in the same color throughout the pattern. When only one number is given in black, it applies to all sizes.

## Notes

- When working in Fair Isle technique, carry yarn not in use loosely across WS of work but never over more than 5 sts. When it must pass over more than 5 sts, weave it over and under color in use on next st or at center point of sts it passes over. The colors are never twisted around one another.
- When a color is finished being used in a section, cut it and carry on. Do not carry colors up the inside of work.

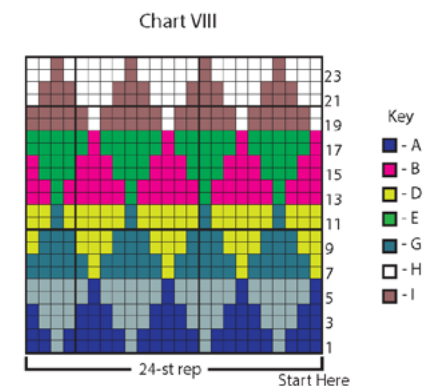
**Next rnd:** (inc rnd). With A \*K6. Kfb. K3. Rep from \* around. **286** (**308-352-396**) sts.

Work 11 rnds of Chart VII, reading rnds from right to left, noting 22-st rep will be worked **13** (**14-16-18**) times.



**Next rnd:** (inc rnd). With A \*K7. Kfb. K3. Rep from \* around. **312** (**336-384-432**) sts.

Work 24 rnds of Chart VIII, reading rnds from **right to left**, noting 24-st rep will be worked **13** (**14-16-18**) times.



**Next rnd:** With A, knit.

**Bottom Ribbing: 1st rnd:** With A, \*K1. P1. Rep from \* around. Rep last rnd of (K1. P1) ribbing for 1¾" [4.5 cm]. Cast off loosely in ribbing.

## FINISHING

Pin Poncho to measurements. Cover with a damp cloth leaving cloth to dry.

Week 4 complete.