



MATERIALS

Patons® Alpaca Blend™ (3.5 oz/100 g; 155 yds/142 m)

Sizes

	XS/M	L/2XL	3/5XL	
Main Color (MC) Slate (01005)	2	3	4	balls
Contrast A Baltic (01017)	1	1	2	ball(s)
Contrast B Toffee (01012)	1	1	2	ball(s)
Contrast C Lagoon (01007)	1	1	2	ball(s)
Contrast D Petunia (01016)	1	1	2	ball(s)

Sizes U.S. 10 (6 mm) and U.S. 10½ (6.5 mm) circular knitting needles 40" (100 cm) long. Size 6 mm (U.S. 10) circular knitting needle 24" (60 cm) long **or size needed to obtain gauge.** Stitch marker.

ABBREVIATIONS: www.yarnspirations.com/abbreviations

Beg = Begin(ning)
K = Knit
K2tog = Knit next
2 stitches together

P = Purl
Rep = Repeat
Rnd(s) = Round(s)
St(s) = Stitch(es)

WS = Wrong side



INTERMEDIATE

BODY

SIZES

To fit bust measurement

XS/M 28-38" [71-96.5 cm]
L/2XL 40-50" [101.5-127 cm]
3/5XL 52-62" [132-157.5 cm]

Finished circumference of Capelet around bottom

XS/M 48" [122 cm]
L/2XL 60¾" [154 cm]
3/5XL 70½" [179 cm]

GAUGE

15 sts and 20 rows = 4" [10 cm] with smaller needles in stocking st.

INSTRUCTIONS

The instructions are written for smallest size. If changes are necessary for larger sizes the instructions will be written thus (). When only one number is given, it applies to all sizes. For ease in working, circle all numbers pertaining to your size.

Note: When working from charts, carry color not in use loosely across WS of work, but never over more than 5 sts. When it must pass over more than 5 sts, weave it loosely over and under color in use on WS.

With larger circular needle and MC, cast on **180 (228-264)** sts. Join in rnd, being careful not to twist sts. Place marker on first st for beg of rnd.

1st rnd: *K2. P2. Rep from * around. Rep last rnd of (K2. P2) ribbing until work from beg measures 3" [7.5 cm].

Change to 40" smaller circular needle. Knit 1 rnd.

Knit Chart I to end of chart, reading rows from right to left, noting 12-st rep will be worked **15 (19-22)** times. Chart I is shown on page 2.



Next rnd: With MC, knit.

Next rnd: *K13 (17-20). K2tog. Rep from * around. 168 (216-252) sts.

Knit Chart II to end of chart, reading rows from right to left, noting 12-st rep will be worked 14 (18-21) times.

Next rnd: With MC, knit.

Next rnd: *K12 (16-19). K2tog. Rep from * around. 156 (204-240) sts.

Next 3 rnds: With B, knit.

Next rnd: *K11 (15-18). K2tog. Rep from * around. 144 (192-228) sts.

Next rnd: Knit.

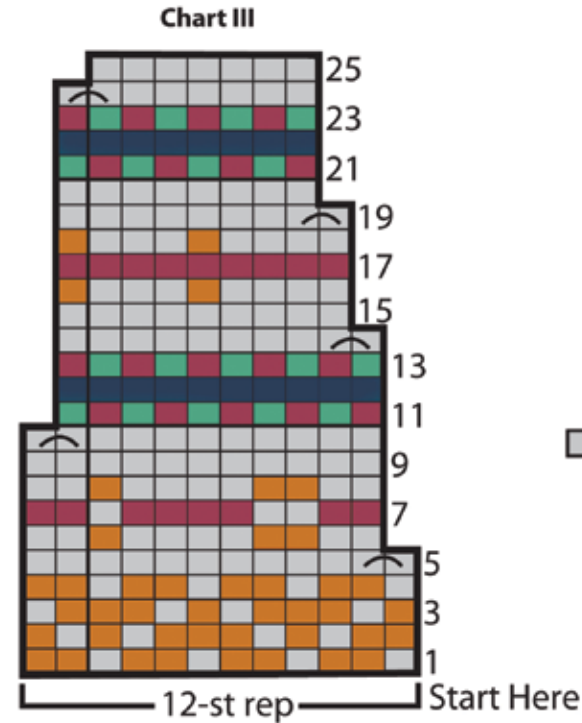
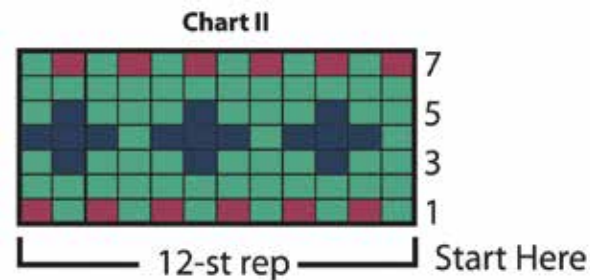
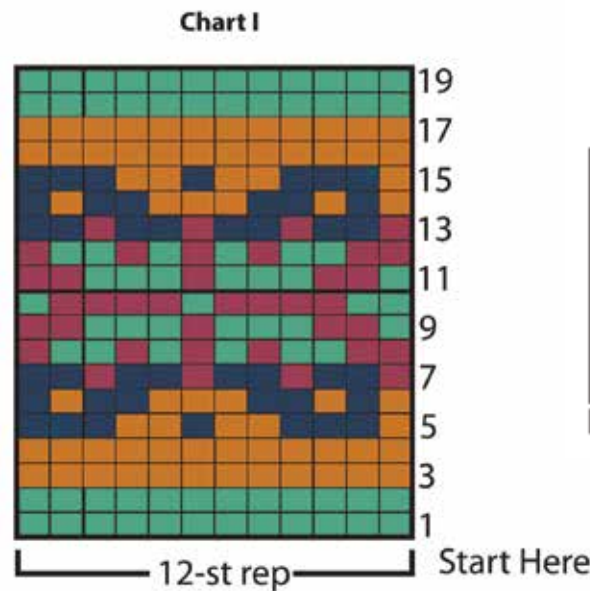
Knit Chart III to end of chart, reading rows from right to left, noting 12-st will be worked 12 (16-19) times. 84 (112-133) sts.

Sizes L/2XL and 3/5XL only:

Next rnd: With MC, *K2tog. K(12-5). Rep from * around. (104-114) sts. Knit (1-2) rnd(s).

Next rnd: *K2tog. K(5-4). Rep from * to last (13-12) sts. K2tog. K(11-10). (90-96) sts.

All sizes: Change to shorter needle and with MC, work in (K3. P3) ribbing for 7" [18 cm]. Cast off in ribbing.



Key

- = MC
- = Contrast A
- = Contrast B
- = Contrast C
- = Contrast D
- = K2tog

