

Patons® Classic Wool



Patons® Classic Wool
UNFELTED TRIBAL
DUFFLE

MEASUREMENTS

Approx 25 ins [63.5 cm] around x 13 ins [33 cm] high.

MATERIALS

Patons® Classic Wool

(100 g / 3.5 oz)

Main Color (MC) (207 Rich Red)	1 ball
Contrast A (226 Black)	2 balls
Contrast B (204 Old Gold)	1 ball
Contrast C (206 Russet)	1 ball

Size 4.5 mm (U.S. 7) knitting needles and size 4.5 mm (U.S. 7) circular knitting needle 16 ins [40 cm] long **or size needed to obtain tension.** ½ yd [0.5 m] of lining fabric.

TENSION

20 sts and 26 rows = 4 ins [10 cm] in stocking st.

STITCH GLOSSARY

Bobble = [(K1. yfwd) 3 times. K1] in next st. 7 sts. Slip 6th, 5th, 4th, 3rd, 2nd and 1st sts separately over 7th st. 1 st remains. Bobble complete.

yf = bring yarn to front of work

yb = bring yarn to back of work

INSTRUCTIONS

Note: When working from charts, carry yarn loosely across WS of work but never over more than 3 sts. When it must pass over more than 3 sts, weave it over and under color in use on next st or at center point of sts it passes over.

MAIN SECTION

With MC and circular needle, cast on 132 sts. Join in rnd, placing a marker on first st.

Knit rows 1 to 12 of Chart I, reading rows from **right** to left and noting 3 st rep will be worked 44 times.

Knit rows 1 to 11 of Chart II, reading rows from **right** to left and noting 22 st rep will be worked 6 times.

Knit rows 1 to 12 of Chart I, noting 3 st rep will be worked 44 times.

With MC, knit 1 rnd.

Knit rows 1 to 10 of Chart III reading rows from **right** to left and noting 6 st rep will be worked 22 times.

Knit rows 1 to 8 of Chart I, noting 3 st rep will be worked 44 times.

Ribbing: 1st rnd: *With B, K2. With A, K2. Rep from * around.

2nd rnd: *With B, P2. With A, K2. Rep from * around.

3rd rnd: *With A, P2. With C, K2. Rep from * around.

4th rnd: As 3rd rnd.

5th rnd: *With MC, P2. With A, K2. Rep from * around.

6th rnd: As 5th rnd.

7th and 8th rnds: As 3rd rnd.

9th and 10th rnds: As 2nd rnd.

Next rnd: (Eyelet rnd). *With A, K2. K2tog. yfwd. Rep from * around.

Purl 1 rnd.

Knit 1 rnd.

Rep last 2 rnds once more.

Purl 1 rnd. Cast off.

BASE

With A and pair of needles, cast on 16 sts.

Work 2 rows in stocking st.

Inc 1 st each end of next and following alt rows until there are 42 sts.

Purl 1 row.

Dec 1 st each end of next and following alt rows until there are 16 sts.

Purl 1 row. Cast off.

Straps (make 2)

With A and pair of needles, cast on 10 sts.

1st row: (WS). K1. yf. Sl1P. yb. Rep from * to last 2 sts . K2.

2nd row: *P1. yb. Sl1P. yf. Rep from * to last 2 sts. P2.

Rep last 2 rows until work from beg measures 21 ins [53.5 cm] ending with RS facing for next row. Cast off.

Lining: Before sewing Base and Main Section tog, mark wrong side of lining according to Base and Main Section shapes with 3/4 ins [1.5 cm] seam allowance. Cut out lining pieces. Sew center backseam of Main Section lining piece tog using a french seam (see Diagram). Sew Base section lining to bottom of Main Section lining using a french seam. Fold and stitch Lining around top 1/2 inch [1 cm] from eyelet row. Press lining to wrong side along this stitching line.

Sew Base to Main Section. Mark center st at top and base of Bag (center back). Sew ends of Straps on either side of marked st at top of Bag, under eyelet rnd. Sew other ends of Straps 4 ins [10 cm] either side of marked st at base.

Twisted Cord: Cut 2 strands of MC 38 ins [96.5 cm] long. With all strands tog hold one end and with someone holding other end, twist strands to the right until they begin to curl. Fold the 2 ends tog and tie in a knot so they will not unravel. The strands will now twist themselves tog. Adjust length if desired. Weave through eyelet rnd of Bag having cords meet at center front.

Chart I

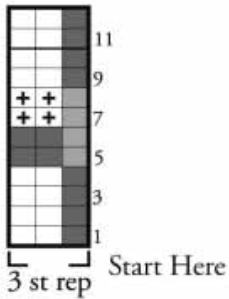


Chart II

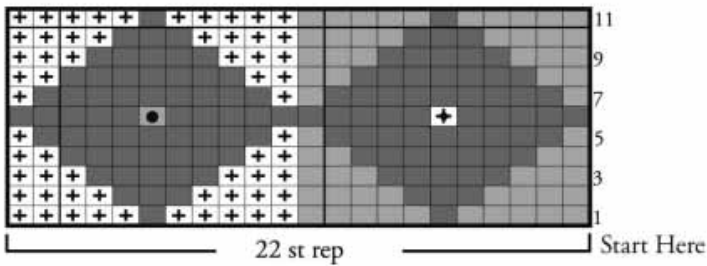
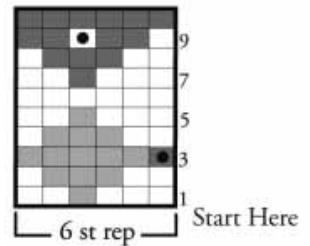


Chart III



- Key
- = MC
 - = Contrast A
 - = Contrast B
 - + = Contrast C
 - = Bobble with MC
 - ◐ = Bobble with C
 - ◑ = Bobble with B
 - ◒ = Bobble with A

Diagram: French Seam for Lining

