



Erin Black
Designer



CROCHET | SKILL LEVEL: EASY

ABBREVIATIONS

Approx = Approximately

Beg = Beginning

Ch = Chain(s)

Dec = Decrease

Dc = Double crochet

Dcbl = Double crochet in back loop only of next stitch

Hdcbl = Half double crochet in back loop only of next stitch

Pat = Pattern

Rem = Remain(ing)

Rep = Repeat

Rnd(s) = Round(s)

RS = Right side

Sc = Single crochet

Sc2tog = Draw up a loop in each of next 2 stitches. Yoh and draw through all loops on hook.

Scbl = Single crochet in back loop only of next stitch

Sl st = Slip stitch

St(s) = Stitch(es)

Tog = Together

Trbl = Treble crochet in back loop only of next stitch

WS = Wrong side

Yoh = Yarn over hook

MATERIALS

Patons® Inspired™ (5.3 oz/150 g; 222 yds/203 m)

Main Color (MC) Soft Cream (92001) **4 balls**

Contrast A Clay (92035) **2 balls**

Contrast B Mineral Teal (92025) **2 balls**

Contrast C Honey Spice (92036) **2 balls**

Contrast D Ginger (92031) **2 balls**

Size U.S. J/10 (6 mm) crochet hook **or size needed to obtain gauge.**
2 stitch markers.

MEASUREMENTS

Approx 50" x 59" [127 x 150 cm].

GAUGE

11 dc and 6 rows = 4" [10 cm].

Motif = 9½" [24 cm] square.

INSTRUCTIONS

BLANKET

Motif 1: Make 8 using A as Color 1.

Motif 2: Make 7 using B as Color 1.

Motif 3: Make 7 using C as Color 1.

Motif 4: Make 8 using D as Color 1.

MOTIF

Quarter Circle (See diagram on page 3)

Note: Ch 3 at beg of rows counts as 1 dc.

With Color 1, ch 4.

1st row: (RS). 2 dc in 4th ch from hook (counts as 3 dc). Turn. 3 dc.

2nd row: Ch 3. 1 dc in first dc. 2 dc in each of next 2 dc. Turn. 6 dc.

3rd row: Ch 3. 1 dc in first dc. 1 dc in next dc. (2 dc in next dc. 1 dc in next dc) twice. Turn. 9 dc.

4th row: Ch 3. 1 dc in first dc. 1 dc in each of next 2 dc. (2 dc in next dc. 1 dc in each of next 2 dc) twice. Turn. 12 dc.

5th row: Ch 3. 1 dc in first dc. 1 dc in each of next 3 dc. (2 dc in next dc. 1 dc in each of next 3 dc) twice. Turn. 15 dc.

6th row: Ch 3. 1 dc in first dc. 1 dc in each of next 4 dc. (2 dc in next dc. 1 dc in each of next 4 dc) twice. Turn. 18 dc.

7th row: Ch 3. 1 dc in first dc. 1 dc in each of next 5 dc. (2 dc in next dc. 1 dc in each of next 5 dc) twice. Turn. 21 dc.

8th row: Ch 3. 1 dc in first dc. 1 dc in each of next 6 dc. (2 dc in next dc. 1 dc in each of next 6 dc) twice.

Turn. 24 dc.

9th row: Ch 3. 1 dc in first dc. 1 dc in each of next 7 dc. (2 dc in next dc. 1 dc in each of next 7 dc) twice. Turn. 27 dc.

10th row: Ch 3. 1 dc in first dc. 1 dc in each of next 8 dc. (2 dc in next dc. 1 dc in each of next 8 dc) twice. Turn. 30 dc.

11th row: Ch 3. 1 dc in first dc. 1 dc in each of next 9 dc. (2 dc in next dc. 1 dc in each of next 9 dc) twice. Turn. 33 dc.

12th row: Ch 3. Place First marker in top of ch-3. 1 dc in first dc. 1 dc in each of next 10 dc. (2 dc in next dc. 1 dc in each of next 10 dc) twice. Turn. 36 dc. Fasten off.

Square-Off Quarter Circle

1st row: (RS). Skip first dc. Join MC with sl st through the back loop only of next dc. 1 scbl in next dc. 1 hdcbl in each of next 2 dc. 1 dcbl in each of next 2 dc. 2 trbl in next dc. 1 dcbl in each of next 2 dc. 1 hdcbl in each of next 2 dc. 1 scbl in next dc. Loosely sl st through the back loop only in each of the next 10 dc. 1 scbl in next dc. 1 hdcbl in each of next 2 dc. 1 dcbl in each of next 2 dc. Place Second

marker in top of next st. 2 trbl in next dc. 1 dcbl in each of next 2 dc. 1 hdcbl in each of next 2 dc. 1 scbl in next dc. Sl st in next dc. Turn. 34 sts (not including first and last sl st). Fasten off.

Dec Corner

1st row: (WS). Join MC with sl st at Second marker. Ch 1. Skip first tr. 1 sc in next dc. 1 sc in each of next 18 sts (including sl sts). Sc2tog. Turn. 20 sts.

2nd row: Ch 1. Skip first st. 1 sc in each sc to last 2 sc. Sc2tog. Turn. 18 sts.

Rep 2nd row, dec 2 sts each row, until 4 sts rem.

Next row: (RS). Ch 1. Skip first st. 1 sc in next sc. Sc2tog. Turn. 2 sts.

Next row: Ch 1. Skip first st. 1 sc in last st. Fasten off.

Motif Edging

Note: To join new color, work to last loops on hook of previous color. Yoh with new color, draw through rem loops and proceed with new color.

1st rnd: (RS). Join Color 1 with sl st at First marker. Ch 1. 1 sc in same dc as last sl st. Corner reached. Ch 2. 2 sc around first edge st of each row to next corner (total of 24 sc across). Ch 2. 2 sc around first edge st of each row to next corner (total of 24 sc across). Ch 2. 1 sc in next st. Join MC. With MC. Work 23 sc evenly across to next corner. Ch 2. Work 23 sc evenly across to first sc. Join with sl st to first sc. Fasten off.

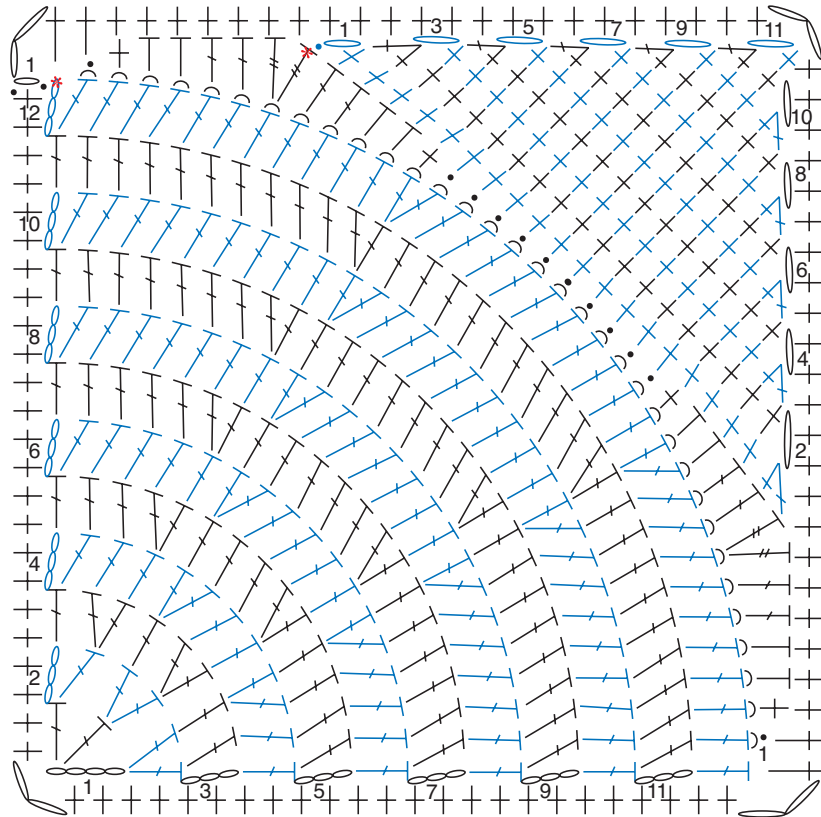
FINISHING

Pin Motifs to measurements. Cover with a damp towel to dry. Sew Motifs tog as shown in diagram using appropriate color to keep seams hidden.

Blanket Edging: 1st rnd: (RS). Join MC with sl st to any corner. Ch 1. Work 1 rnd of sc evenly around edge of Blanket, having 3 sc in each corner. Join with sl st to first sc.

2nd rnd: Ch 3 (counts as dc). 1 dc in next sc. Work 1 dc in each sc around, having 3 dc in each corner sc. Join with sl st to top of ch-3. Fasten off.

MOTIF EDGING



MOTIF

STITCH KEY

- = chain (ch)
- = slip stitch (sl st)
- = single crochet (sc)
- = half double crochet (hdc)
- = double crochet (dc)
- = treble crochet (tr)
- = single crochet 2 together (sc2tog)
- = worked in back loop only
- = marker

1	2	3	3	4
2	1	4	2	1
4	2	3	4	3
1	1	2	1	1
4	2	3	1	4
3	4	2	3	4

