



 CROCHET | SKILL LEVEL: INTERMEDIATE

SIZES

To fit child **4/6 (8/10)**

INSTRUCTIONS

Notes:

- To join new color, work to last 2 loops on hook. Draw new color through last 2 loops then proceed with new color.
- Carry color when not in use **loosely** across top of previous rnd and work sts around it to avoid stranding (see photo below of WS of work).

Ribbing

With MC, ch 18.

1st row: (RS). 1 sc in 2nd ch from hook. 1 sc in each ch to end of chain. Turn. 17 sts.

2nd row: Ch 1. *Working in back loops only*, 1 sc in each sc to end of row. Turn.

GAUGE

16 sc and 15 rows = 4" [10 cm] in Fair Isle Pat. Proceed in pat as follows:

Rep last row until work from beg measures **17½ (18½)" [44.5 (47) cm]**, when slightly stretched. Do not fasten off.

Join last row and 1st row tog with 1 row of sc to form tube.

Beg working in rnds: Foundation

rnd: Ch 1. *Working along side edge of ribbing*, work 72 (**80**) sc evenly around.

Join with sl st to first sc.

1st to 8th rnds: Ch 1. Work Chart to end of chart, noting 8-st rep will be worked **9 (10)** times. Join with sl st to first sc at end of each rnd.

Rep last 8 rnds of Chart once more.

MATERIALS

Patons® Canadiana™ (3.5 oz/100 g; 205 yds/187 m)

Sizes **4/6** **8/10**

Boy's Version

Main Color (MC) Dark Grey Mix (10042)	1	1	ball
Contrast A Black (10040)	1	1	ball
Contrast B Lime Juice (10712)	1	1	ball
Contrast C Pale Grey Mix (10046)	1	1	ball

Girl's Version

Main Color (MC) Medium Teal (10744)	1	1	ball
Contrast A Medium Amethyst (10344)	1	1	ball
Contrast B Winter White (10006)	1	1	ball
Contrast C Lime Juice (10712)	1	1	ball

Size U.S. H/8 (5 mm) crochet hook **or size needed to obtain gauge.**

Shape top: 1st rnd: With MC, ch 1. Sc2tog. 1 sc in next sc. *With B, 1 sc in next sc. With MC, 1 sc in each of next 2 sc. Sc2tog. 1 sc in each of next 3 sc. Rep from * to last 4 sc. With MC, 1 sc in each of last 4 sc. Join with sl st to first sc. **63 (70)** sts.

2nd rnd: With MC, ch 1. 1 sc in next st. *With B, 1 sc in each of next 3 sts. With MC, 1 sc in each of next 4 sts. Rep from * to last 6 sts. With B, 1 sc in each of next 3 sts. With MC, 1 sc in each of last 3 sts. Join B with sl st to first sc.

3rd rnd: With B, ch 1. 1 sc in each of next 5 sts. *With MC, sc2tog. With B, 1 sc in each of next 5 sts. Rep from * to last 2 sts. With MC, sc2tog. Join A with sl st to first sc. **54 (60)** sts.

4th rnd: With A, ch 1. *1 sc in each of next 2 sts. Sc2tog. 1 sc in each of next 2 sts. Rep from * around. Join with sl st to first sc. **45 (50)** sts.

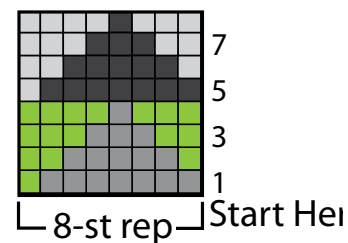
5th rnd: Ch 1. *1 sc in each of next 3 sts. Sc2tog. Rep from * around. Join with sl st to first sc. **36 (40)** sts.

6th rnd: Ch 1. *Sc3tog. Rep from * around to last 0 (1) st. (1 sc in last st) 0 (1) time. Join with sl st to first sc leaving a long end. Draw end tightly through rem **12 (14)** sts.

WS of Hat

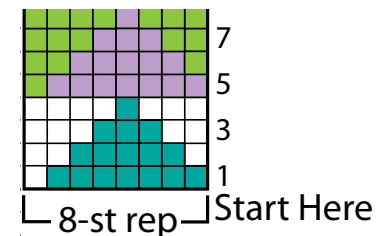


Boy's Version Chart



Key
 ■ = MC
 ■ = A
 ■ = B
 □ = C

Girl's Version Chart



Key
 ■ = MC
 ■ = A
 □ = B
 ■ = C

ABBREVIATIONS:

Beg = Beginning

Ch(s) = Chain(s)

Pat = Pattern

Rem = Remaining

Rep = Repeat

Rnd(s) = Round(s)

RS = Right side

Sc = Single crochet

Sc2tog = Draw up a loop in each of next 2 stitches. Yoh and draw through all 3 loops on hook

Sc3tog = Draw up a loop in each of next 3 stitches. Yoh and draw through all 4 loops on hook

Sl st = Slip stitch

St(s) = Stitch(es)

Tog = Together

WS = Wrong side

Yoh = Yarn over hook