



**PATONS® BEEHIVE BABY SPORT
DAISY CHAIN BORDER CARDIGAN & HAT
(TO CROCHET)**

SIZES

To fit chest measurement

6 mos	17" [43 cm]
12 mos	18" [45.5 cm]
18 mos	19" [48 cm]

Finished chest

6 mos	19" [48 cm]
12 mos	22" [56 cm]
18 mos	23½" [59.5 cm]

Hat

To fit baby's head **6 (12-18)** mos.

MATERIALS

Patons® Beehive Baby Sport (100 g/3.5 oz; 328 m/359 yds)

Sizes **6 mos** **12 mos** **18 mos**

Cardigan and Hat

Contrast A (09420 Precious Pink) **2** **2** **3 balls**

Contrast B (09005 Angel White) **1** **1** **1 ball**

Size 3.75 mm (U.S. F or 5) crochet hook **or size needed to obtain tension.** 4 buttons.

TENSION

5½ clusters and 10 rows = 4" [10 cm] in Basic Cluster Pat.

INSTRUCTIONS

The instructions are written for smallest size. If changes are necessary for larger sizes the instructions will be written thus (.). Numbers for each size are shown in the same color throughout the pattern. When only one number is given in black, it applies to all sizes.

CARDIGAN

BODY

Note: Body is worked in one piece to armholes.

With A, ch **110 (126-134)**.

Work in Basic Cluster Pat as follows: (see Diagram I on page 6).

1st row: (RS). (Yoh and draw up a loop. Yoh and draw through 2 loops on hook) 3 times in 5th ch from hook. Yoh and draw through all 4 loops on hook – cluster made. Ch 1. Miss next 2 ch. 1 sc in next ch. *Ch 3. Cluster in next ch. Ch 1. Miss next 2 ch. 1 sc in next ch. Rep from * to last 2 ch. Ch 2. Miss next ch. 1 dc in last ch. Turn. **26 (30-32)** clusters.

2nd row: Ch 4 (counts as 1 dc and ch 1). Cluster in first ch-2 sp. Ch 1. *(1 sc. Ch 3. Cluster) in next ch-3 sp. Ch 1. Rep from * to last turning ch sp. (1 sc. Ch 2. 1 dc) in 3rd ch of turning ch. Turn.

Rep last row for Basic Cluster Pat once more.

STITCH GLOSSARY

www.patonsyarns.com/abbreviations

Approx = Approximate(ly).	Rep = Repeat.
Beg = Beginning.	RS = Right side.
Ch = Chain(s).	Sc = Single crochet.
Cont = Continue(ity).	Sl st = Slip stitch.
Dc = Double crochet.	Sp(s) = Space(s).
Pat = Pattern.	St(s) = Stitch(es).
Rem = Remaining.	Yoh = Yarn over hook.
	WS = Wrong side.

Patons®

Beehive Baby Sport
...a part of your life.

P.O. Box 40, Listowel ON N4W 3H3

www.patonsyarns.com

DAISY CHAIN BORDER CARDIGAN & HAT



INTERMEDIATE

Size 6 mos only: Next row: (WS). Ch 1. 1 sc in first dc. 3 sc in next ch-2 sp. *1 sc in next sc. 1 sc in next cluster. 2 sc in next ch-3 sp. 1 sc in next sc. 1 sc in next cluster. 3 sc in next ch-3 sp. Rep from * 11 times more. 1 sc in next sc. 2 sc in next cluster. 2 sc in next ch-3 sp. 1 sc in next sc. 2 sc in next cluster. 3 sc in turning ch sp. Join B. Turn. 123 sc.

Sizes 12 mos only: Next row: (WS). Ch 1. 1 sc in first dc. 3 sc in next ch-2 sp. *(1 sc in next sc. 1 sc in next cluster. 2 sc in next ch-3 sp) twice. 1 sc in next sc. 1 sc in next cluster. 3 sc in next ch-3 sp. Rep from * 8 times more. (1 sc in next sc. 1 sc in next cluster. 2 sc in next ch-3 sp) twice. 1 sc in next sc. 2 sc in next cluster. 2 sc in turning ch sp. Join B. Turn. 134 sc.

Size 18 mos only: Next row: (WS). Ch 1. 1 sc in first dc. 2 sc in next ch-2 sp. *1 sc in next sc. 1 sc in next cluster. 2 sc in next ch-3 sp. 1 sc in next sc. 1 sc in next cluster. 3 sc in next ch-3 sp. Rep from * 14 times more. 1 sc in next sc. 1 sc in next cluster. 1 sc in next ch-3 sp. 1 sc in next sc. 2 sc in next cluster. 1 sc in turning ch sp. Join B. Turn. 145 sc.

All sizes: **Proceed in Daisy Chain Pat as follows: (See Diagram II on page 6)

1st row: With B, ch 1. 1 sc in first sc. Ch 1. Miss next sc. 1 sc in next sc. *(Ch 3. Miss next 3 sc. 1 sc in next sc) twice. Ch 2. Miss next 2 sc. 1 sc in next sc. Rep from * to last 10 sc. (Ch 3. Miss next 3 sc. 1 sc in next sc) twice. Ch 1. Miss next sc. 1 sc in last sc. Turn.

2nd row: Ch 3 (counts as dc). (*Yoh and draw up a loop. Yoh and draw through 2 loops on hook twice in first ch-1 sp. Yoh and draw through all 3 loops on hook – dc2tog cluster made.*) (Ch 2. Dc2tog cluster) in same ch-1 sp. Ch 1. Miss next ch-3 sp. 1 sc in next sc. *Ch 1. Miss next ch-3 sp. [(Dc2tog cluster. Ch 2) 3 times. Dc2tog cluster] all in next ch-2 sp. Ch 1. Miss next ch-3 sp. 1 sc in next sc. Rep from * to last ch-3 sp. Ch 1. Miss last ch-3 sp. (Dc2tog cluster. Ch 2. Dc2tog cluster) in next ch-1 sp. 1 dc in last sc. Join A. Turn.

3rd row: With A, ch 1. 1 sc in first dc. *Ch 3. (Dc2tog cluster in top of next dc2tog cluster) 4 times. Ch 3. 1 sc in next ch-2 sp. Rep from * across; ending with 1 sc in top of turning ch 3. Turn.

4th row: Ch 1. 1 sc in first sc. *Ch 3. 1 sc in top of next dc2tog cluster. Ch 2. Miss next 2 dc2tog clusters. 1 sc in top of next dc2tog cluster. Ch 3. 1 sc in next sc. Rep from * to end of row. Turn.

5th row: Ch 1. 1 sc in first sc. *Ch 1. Miss next ch-3 sp. [(Dc2tog cluster. Ch 2) 3 times. Dc2tog cluster] all in next ch-2 sp. Ch 1. Miss next ch-3 sp. 1 sc in next sc. Rep from * to end of row. Join B. Turn.

6th row: With B, ch 3 (counts as dc). (Dc2tog cluster in top of next dc2tog cluster) twice. Ch 3. 1 sc in next ch-2 sp. *Ch 3. (Dc2tog cluster in top of next dc2tog cluster) 4 times. Ch 3. 1 sc in next ch-2 sp. Rep from * to last 2 ch-2 sps. Ch 3. (Dc2tog cluster in top of next dc2tog cluster) twice. 1 dc in last sc. Turn.

7th row: Ch 1. 1 sc in first dc. Ch 1. Miss next dc2tog cluster. 1 sc in top of next dc2tog cluster. *Ch 3. Miss next ch-3 sp. 1 sc in next sc. Ch 3. Miss next ch-3 sp. 1 sc in top of next dc2tog cluster. Ch 2. Miss next 2 dc2tog clusters. 1 sc in top of next dc2tog cluster. Rep from * across; ending with: Ch 3. Miss next ch-3 sp. 1 sc in next sc. Ch 3. Miss next ch-3 sp. 1 sc in top of next dc2tog cluster. Ch 1. Miss next dc2tog cluster. 1 sc in top of turning ch 3. Join A. Turn.**

Size 6 mos only: Next row: (WS). With A, ch 1. 1 sc in first sc. Miss next ch-1 sp. 1 sc in next sc. 2 sc in next ch-3 sp. Miss next sc. 3 sc in next ch-3 sp. Miss next sc. 1 sc in next ch-2 sp. 1 sc in next sc. *3 sc in next ch-3 sp. 1 sc in next sc. 3 sc in next ch-3 sp. 1 sc in next sc. 1 sc in next ch-2 sp. 1 sc in next sc. Rep from * 8 times more. 2 sc in next ch-3 sp. 1 sc in next sc. 2 sc in next ch-3 sp. 1 sc in next sc. Miss next ch-1 sp. 1 sc in last sc. 106 sc. Turn.

Size 12 mos only: Next row: (WS). With A, ch 1. 1 sc in first sc. Miss next ch-1 sp. 1 sc in next sc. 3 sc in next ch-3 sp. 1 sc in next sc. 3 sc in next ch-3 sp. 1 sc in next sc. 2 sc

in next ch-2 sp. 1 sc in next sc. *3 sc in next ch-3 sp. 1 sc in next sc. 3 sc in next ch-3 sp. 1 sc in next sc. 1 sc in next ch-2 sp. 1 sc in next sc. Rep from * 9 times more. 3 sc in next ch-3 sp. 1 sc in next sc. 3 sc in next ch-3 sp. 1 sc in next sc. Miss next ch-1 sp. 1 sc in last sc. 122 sc. Turn.

Size 18 mos only: Next row: (WS). With A, ch 1. 1 sc in first sc. Miss next ch-1 sp. 1 sc in next sc. 3 sc in next ch-3 sp. 1 sc in next sc. 3 sc in next ch-3 sp. Miss next sc. 2 sc in next ch-2 sp. 1 sc in next sc. *3 sc in next ch-3 sp. 1 sc in next sc. 3 sc in next ch-3 sp. 1 sc in next sc. 1 sc in next ch-2 sp. 1 sc in next sc. Rep from * 10 times more. 3 sc in next ch-3 sp. 1 sc in next sc. 2 sc in next ch-3 sp. 1 sc in next sc. Miss next ch-1 sp. 1 sc in last sc. 130 sc. Turn.

All sizes: Next row: Ch 4 (counts as 1 dc and ch 1). Cluster in first sc. *Ch 1. Miss next 2 sc. 1 sc in next sc. Ch 3. Cluster in next sc. Rep from * to last 5 sc. Ch 1. Miss next 2 sc. 1 sc in next sc. Ch 2. Miss next sc. 1 dc in last sc. Turn. **26 (30-32)** clusters.

Next row: Ch 4 (counts as 1 dc and ch 1). Cluster in first ch-2 sp. Ch 1. *(1 sc. Ch 3. Cluster) in next ch-3 sp. Ch 1. Rep from * to last turning ch 4. (1 sc. Ch 2. 1 dc) in 3rd ch of turning ch. Turn.

Rep last row for Basic Cluster Pat until work from beg measures **6½ (7½-8)'' [16.5 (19-20.5) cm]**, ending with a WS row.



Patons®

Beehive Baby Sport
...a part of your life.

P.O. Box 40, Listowel ON N4W 3H3

www.patonsyarns.com

DAISY CHAIN BORDER CARDIGAN & HAT



INTERMEDIATE

2 of 6

Divide for armholes: Next row: (RS). Ch 4 (counts as 1 dc and ch 1). Cluster in first ch-2 sp. Ch 1. *(1 sc. Ch 3. Cluster) in next ch-3 sp. Ch 1. Rep from * **3 (4-5)** times more. (1 sc. Ch 2. 1 dc) in next ch-3 sp. **Turn.** Leave rem sts unworked.

Cont even in pat on **5 (6-7)** clusters for Right Front until work from dividing row measures **2½ (3-3½)" [6 (7.5-9) cm]**, ending with a WS row. Fasten off.

Shape neck: 1st row: (RS). Miss first ch-2 sp. Miss next ch-3 sp. Rejoin A with sl st to next ch-3 sp. Ch 4 (counts as 1 dc and ch 1). Cluster in same ch-3 sp as last sl st. Ch 1. *(1 sc. Ch 3. Cluster) in next ch-3 sp. Ch 1. Rep from * to last turning ch 4. (1 sc. Ch 2. 1 dc) in 3rd ch of turning ch. Turn.

2nd row: Ch 4 (counts as 1 dc and ch 1). Cluster in first ch-2 sp. Ch 1. *(1 sc. Ch 3. Cluster) in next ch-3 sp. Ch 1. Rep from * **1 (2-3)** time(s) more. Sl st in last ch-3 sp. Turn.

3rd row: Sl st in next ch-1 sp, next cluster and next ch-3 sp. Ch 4 (counts as 1 dc and ch 1). Cluster in same ch-3 sp as last sl st. Ch 1. *(1 sc. Ch 3. Cluster) in next ch-3 sp. Ch 1. Rep from * to last turning ch sp. (1 sc. Ch 2. 1 dc) in 3rd ch of turning ch. Turn.

Size 6 mos only: 4th row: Ch 4 (counts as 1 dc and ch 1). Cluster in first ch-2 sp. Ch 1. (1 sc. Ch 3. Cluster) in next ch-3 sp. Ch 1. (1 sc. Ch 2. 1 dc) in 3rd ch of turning ch. Turn.

5th row: As 4th row. Fasten off.

Sizes 12 and 18 mos only: 4th row:

Ch 4 (counts as 1 dc and ch 1). Cluster in first ch-2 sp. Ch 1. *(1 sc. Ch 3. Cluster) in next ch-3 sp. Ch 1. Rep from * **(1-2)** time(s) more. Sl st in last ch-3 sp. Turn.

5th row: Sl st in next ch-1 sp, next cluster and next ch-3 sp. Ch 4 (counts as 1 dc and ch 1). Cluster in same ch-3 sp as last sl st. Ch 1. *(1 sc. Ch 3. Cluster) in next ch-3 sp. Ch 1. Rep from * **(0-1)** time(s) more. (1 sc. Ch 2. 1 dc) in 3rd ch of turning ch. Fasten off.

All sizes: Back: 1st row: (RS). Miss next 2 ch-3 sps after Right Front. Rejoin A with sl st to next ch-3 sp. Ch 4 (counts as 1 dc and ch 1). Cluster in same ch-3 sp as last sl st. Ch 1. *(1 sc. Ch 3. Cluster) in next ch-3 sp. Ch 1. Rep from * **8 (10-10)** times more. (1 sc. Ch 2. 1 dc) in next ch-3 sp. **Turn.** Leave rem sts unworked.

Cont even in pat on **10 (12-12)** clusters for Back until work from dividing row measures same length as Right Front. Fasten off.

Left Front: 1st row: (RS). Miss next 2 ch-3 sps after Back. Rejoin A with sl st to next ch-3 sp. Ch 4 (counts as 1 dc and ch 1). Cluster in same ch-3 sp as last sl st. Ch 1. *(1 sc. Ch 3. Cluster) in next ch-3 sp. Ch 1. Rep from * to last turning ch sp. (1 sc. Ch 2. 1 dc) in 3rd ch of turning ch. Turn.

Cont even in pat on **5 (6-7)** clusters for Left Front until work from dividing row measures **2½ (3-3½)" [6 (7.5-9) cm]** ending with a WS row.

Shape neck: 1st row: (RS). Ch 4 (counts as 1 dc and ch 1). Cluster in first ch-2 sp. Ch 1. *(1 sc. Ch 3. Cluster) in next ch-3 sp. Ch 1. Rep from * **1 (2-3)** time(s) more. Sl st in next ch-3 sp. **Turn.** Leave rem sts unworked.

2nd row: Sl st in next ch-1 sp, next cluster and next ch-3 sp. Ch 4 (counts as 1 dc and ch 1). Cluster in same ch-3 sp as last sl st. Ch 1. *(1 sc. Ch 3. Cluster) in next ch-3 sp. Ch 1. Rep from * to last turning ch sp. (1 sc. Ch 2. 1 dc) in 3rd ch of turning ch. Turn.

Size 6 mos only: 3rd row: Ch 4 (counts as 1 dc and ch 1). Cluster in first ch-2 sp. Ch 1. (1 sc. Ch 3. Cluster) in next ch-3 sp. Ch 1. (1 sc. Ch 2. 1 dc) in 3rd ch of turning ch. Turn.

4th row: As 3rd row.

Sizes 12 and 18 mos only: 3rd row: Ch 4 (counts as 1 dc and ch 1). Cluster in first ch-2 sp. Ch 1. *(1 sc. Ch 3. Cluster) in next ch-3 sp. Ch 1. Rep from * **(1-2)** time(s) more. Sl st in last ch-3 sp. Turn.

4th row: Sl st in next ch-1 sp, next cluster and next ch-3 sp. Ch 4 (counts as 1 dc and ch 1). Cluster in same ch-3 sp as last sl st. Ch 1. *(1 sc. Ch 3. Cluster) in next ch-3 sp. Ch 1. Rep from * **(0-1)** time(s) more. (1 sc. Ch 2. 1 dc) in 3rd ch of turning ch. Turn.

All sizes: 5th row: Ch 4 (counts as 1 dc and ch 1). Cluster in first ch-2 sp. Ch 1. *(1 sc. Ch 3. Cluster) in next ch-3 sp. Ch 1. Rep from * **0 (0-1)** time more. (1 sc. Ch 2. 1 dc) in 3rd ch of turning ch. Fasten off.

SLEEVES

With A, ch **42 (42-46)**.

1st row: (RS). (*Yoh and draw up a loop. Yoh and draw through 2 loops on hook*) *3 times in 5th ch from hook. Yoh and draw through all 4 loops on hook* – cluster made. Ch 1. Miss next 2 ch. 1 sc in next ch. *Ch 3. Cluster in next ch. Ch 1. Miss next 2 ch. 1 sc in next ch. Rep from * to last 2 ch. Ch 2. Miss next ch. 1 dc in last ch. Turn. **9 (9-10)** clusters.

2nd row: Ch 4 (counts as 1 dc and ch 1). Cluster in first ch-2 sp. Ch 1. *(1 sc. Ch 3. Cluster) in next ch-3 sp. Ch 1. Rep from * to last turning ch sp. (1 sc. Ch 2. 1 dc) in 3rd ch of turning ch. Turn. Rep last row for Basic Cluster Pat once more.

Sizes 6 and 12 mos only: Next row: (WS). Ch 1. 1 sc in first dc. 2 sc in next ch-2 sp. *1 sc in next sc. 1 sc in next cluster. 3 sc in next ch-3 sp. Rep from * 7 times more. 1 sc in next sc. 1 sc in next cluster. 1 sc in turning ch sp. Join B. Turn. 46 sc.

Size 18 mos only: Next row: (WS). Ch 1. 2 sc in first dc. 3 sc in next ch-2 sp. *1 sc in next sc. 1 sc in next cluster. 3 sc in next ch-3 sp. Rep from * 8 times more. 2 sc in next sc. 2 sc in next cluster. 3 sc in turning ch sp. Join B. Turn. 57 sc.

All Sizes: Work Daisy Chain Pat as given for Body from ** to **.





Size 6 mos only: Next row: (WS). With A, ch 1. 1 sc in first sc. Miss next ch-1 sp. 1 sc in next sc. 3 sc in next ch-3 sp. 1 sc in next sc. 3 sc in next ch-3 sp. 1 sc in next sc. 2 sc in next ch-2 sp. 1 sc in next sc. *3 sc in next ch-3 sp. 1 sc in next sc. 3 sc in next ch-3 sp. 1 sc in next sc. 1 sc in next ch-2 sp. 1 sc in next sc. Rep from * once more. 3 sc in next ch-3 sp. 1 sc in next sc. 3 sc in next ch-3 sp. 1 sc in next sc. Miss next ch-1 sp. 1 sc in last sc. 42 sc. Turn.

Size 12 mos only: Next row: (WS). With A, ch 1. 1 sc in first sc. Miss next ch-1 sp. 1 sc in next sc. 3 sc in next ch-3 sp. 1 sc in next sc. 3 sc in next ch-3 sp. 1 sc in next sc. 2 sc in next ch-2 sp. 2 sc in next sc. *3 sc in next ch-3 sp. 1 sc in next sc. 3 sc in next ch-3 sp. 2 sc in next sc. 1 sc in next ch-2 sp. 1 sc in next sc. Rep from * once more. 3 sc in next ch-3 sp. 2 sc in next sc. 3 sc in next ch-3 sp. 1 sc in next sc. Miss next ch-1 sp. 1 sc in last sc. 46 sc. Turn.

Size 18 mos only: Next row: (WS). With A, ch 1. 1 sc in first sc. Miss next ch-1 sp. 1 sc in next sc. 3 sc in next ch-3 sp. 1 sc in next sc. 3 sc in next ch-3 sp. Miss next sc. 1 sc in next ch-2 sp. 1 sc in next sc. *3 sc in next ch-3 sp. 1 sc in next sc. 3 sc in next ch-3 sp. 1 sc in next sc. 1 sc in next ch-2 sp. 1 sc in next sc. Rep from * twice more. 3 sc in next ch-3 sp. 1 sc in next sc. 3 sc in next ch-3 sp. 1 sc in next sc. Miss next ch-1 sp. 1 sc in last sc. 50 sc. Turn.

All sizes: Next row: Ch 4 (counts as 1 dc and ch 1). Cluster in first sc. *Ch 1. Miss next 2 sc. 1 sc in next sc. Ch 3. Cluster in next sc. Rep from * to last 5 sc. Ch 1. Miss next 2 sc. 1 sc in next sc. Ch 2. Miss next sc. 1 dc in last sc. Turn. **10 (11-12)** clusters. **Next row:** Ch 4 (counts as 1 dc and ch 1). Cluster in first ch-2 sp. Ch 1. *(1 sc. Ch 3. Cluster) in next ch-3 sp. Ch 1. Rep from * to last turning ch 4. (1 sc. Ch 2. 1 dc) in 3rd ch of turning ch. Turn. Rep last row **1 (1-3)** time(s) more.

Shape sides: Next row: (WS). Ch 4 (counts as 1 dc and ch 1). Cluster in first ch-2 sp. Ch 1. *(1 sc. Ch 3. Cluster) in next ch-3 sp. Ch 1. Rep from * to last turning ch 4. (1 sc. Ch 3. Cluster) in 3rd ch of turning ch. Turn.

Next row: Ch 4 (counts as 1 dc and ch 1). 1 dc in first cluster. Ch 1. *(1 sc. Ch 3. Cluster) in next ch-3 sp. Ch 1. Rep from * to last turning ch 4. (1 sc. Ch 3. Cluster) in 3rd ch of turning ch. Turn.

Next row: Ch 4 (counts as 1 dc and ch 1). 1 dc in first cluster. Ch 1. *(1 sc. Ch 3. Cluster) in next ch-3 sp. Ch 1. Rep from * to last turning ch 4. (1 sc. Ch 2. 1 dc) in 3rd ch of turning ch. Turn.

Next row: Ch 4 (counts as 1 dc and ch 1). Cluster in first ch-2 sp. Ch 1. *(1 sc. Ch 3. Cluster) in next ch-3 sp. Ch 1. Rep from * to last turning ch 4. (1 sc. Ch 2. 1 dc) in 3rd ch of turning ch. Turn. **12 (13-14)** clusters. Cont even in Basic Cluster Pat until work from beg measures **6 (7-8)" [15 (18-20.5)** cm], ending with a WS row. Fasten off.

Place markers on side edges of Sleeves 1" [2.5 cm] down from last row.

FINISHING

Sew shoulder seams. Sew sleeve seams to markers. Sew in sleeves, placing rows above markers along unworked sts at armholes to form square armholes.

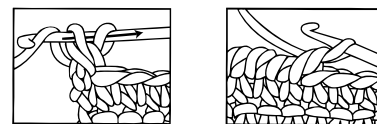
Buttonhole Band: 1st row: (RS). Join A with sl st in bottom corner of Right Front. Ch 1. Work **42 (48-51)** sc up Right Front edge to neck edge. Turn.

2nd row: Ch 1. 1 sc in each of first 2 sc. *Ch 2. Miss next 2 sc. 1 sc in each of next **10 (12-13)** sc. Rep from * twice more. Ch 2. Miss next 2 sc. 1 sc in each of last 2 sc. Turn.

3rd row: Ch 1. 1 sc in each sc and 2 sc in each ch-2 sp to end of row. **Do not** turn.

4th row: Ch 1. *Working from left to right, instead of from right to left, as usual, work 1 reverse sc in each sc to end of row.* Fasten off.

REVERSE SC



Button Band: Work as for Buttonhole Band along Left Front edge, omitting all references to buttonholes.

Collar: 1st row: (WS). Join B with sl st in side of 2nd row of Button Band at neck edge. Ch 1. Work 68 sc evenly along neck edge to side of 2nd row of Buttonhole Band. Turn.

2nd row: (RS). Ch 1. 1 sc in first sc. Ch 1. Miss next sc. 1 sc in next sc. *(Ch 3. Miss next 3 sc. 1 sc in next sc) twice. Ch 2. Miss next 2 sc. 1 sc in next sc. Rep from * to last 10 sc. (Ch 3. Miss next 3 sc. 1 sc in next sc) twice. Ch 1. Miss next sc. 1 sc in last sc. Turn.

3rd row: Ch 3 (counts as dc). (Dc2tog cluster. Ch 2. Dc2tog cluster) in first ch-1 sp. *Ch 1. Miss next ch-3 sp. 1 sc in next sc. Ch 1. Miss next ch-3 sp. [(Dc2tog cluster. Ch 2) 3 times. Dc2tog cluster] all in next ch-2 sp. Rep from * 4 times more. Ch 1. Miss next ch-3 sp. 1 sc in next sc. Ch 1. Miss next ch-3 sp. (Dc2tog cluster. Ch 2. Dc2tog cluster) in next ch-1 sp. 1 dc in last sc. Join A. Turn.

Patons[®]

*Beehive Baby
Sport
...a part of your life.*

P.O. Box 40, Listowel ON N4W 3H3

www.patonsyarns.com

DAISY CHAIN BORDER CARDIGAN & HAT



INTERMEDIATE

4 of 6

4th row: With A, ch 1. 1 sc in first dc. *Ch 3. (Dc2tog cluster in top of next dc2tog cluster) 4 times. Ch 3. 1 sc in next ch-2 sp. Rep from * across, ending with 1 sc in top of turning ch 3. Turn.

5th row: Ch 1. 1 sc in first sc. *Ch 3. 1 sc in top of next dc2tog cluster. Ch 2. Miss next 2 dc2tog clusters. 1 sc in top of next dc2tog cluster. Ch 3. 1 sc in next sc. Rep from * to end of row. Turn.

6th row: Ch 1. 1 sc in first sc. *Ch 1. Miss next ch-3 sp. [(Dc2tog cluster. Ch 2) 3 times. Dc2tog cluster] all in next ch-2 sp. Ch 1. Miss next ch-3 sp. 1 sc in next sc. Rep from * to end of row. Join B. Turn.

7th row: With B, ch 3 (counts as dc). (Dc2tog cluster in top of next dc2tog cluster) twice. Ch 3. 1 sc in next ch-2 sp. *Ch 3. (Dc2tog cluster in top of next dc2tog cluster) 4 times. Ch 3. 1 sc in next ch-2 sp. Rep from * 4 times more. Ch 3. (Dc2tog cluster in top of next dc2tog cluster) twice. 1 dc in last sc. Turn.

8th row: Ch 1. 1 sc in first dc. Ch 1. Miss next dc2tog cluster. 1 sc in top of next dc2tog cluster. *Ch 3. Miss next ch-3 sp. 1 sc in next sc. Ch 3. Miss next ch-3 sp. 1 sc in top of next dc2tog cluster. Ch 2. Miss next 2 dc2tog clusters. 1 sc in top of next dc2tog cluster. Rep from * across, ending with: Ch 3. Miss next ch-3 sp. 1 sc in next sc. Ch 3. Miss next ch-3 sp. 1 sc in top of next dc2tog cluster. Ch 1. Miss next dc2tog cluster. 1 sc in top of turning ch 3. Join A. Turn.

9th row: With A, ch 1. 1 sc in first sc. Ch 2. Miss next ch-1 sp. 1 sc in next sc. (5 dc in next ch-3 sp. 1 sc in next sc) twice. *Ch 3. Miss next ch-2 sp. (1 sc in next sc. 5 dc in next ch-3 sp) twice. 1 sc in next sc. Rep from * to last 2 sts. Ch 2. Miss next ch-1 sp. 1 sc in last sc. Fasten off.

HAT

With B, ch 91.

1st row: 1 sc in 2nd ch from hook. Ch 1. Miss next ch. 1 sc in next ch. *(Ch 3. Miss next 3 ch. 1 sc in next ch) twice. Ch 2. Miss next 2 ch. 1 sc in next ch. Rep from * to last 10 ch. (Ch 3. Miss next 3 ch. 1 sc in next ch) twice. Ch 1. Miss next ch. 1 sc in last ch. Turn.



Work 2nd to 7th rows of Daisy Chain Pat as given for Body. Break B. Place markers at each end of last row.

Next row: (RS). With A, ch 1. 1 sc in first sc. Miss next ch-1 sp. 1 sc in next sc. **2 (3)** sc in next ch-3 sp. Miss next sc. **1 (2)** sc in next ch-3 sp. Miss next sc. 1 sc in next ch-2 sp. 1 sc in next sc. *3 sc in next ch-3 sp. 1 sc in next sc. 3 sc in next ch-3 sp. 1 sc in next sc. 1 sc in next ch-2 sp. 1 sc in next sc. Rep from * 5 times more. **2 (3)** sc in next ch-3 sp. 1 sc in next sc. **2 (3)** sc in next ch-3 sp. 1 sc in next sc. Miss next ch-1 sp. 1 sc in last sc. **74 (78)** sc. Turn.

Next row: Ch 4 (counts as 1 dc and ch 1). Cluster in first sc. *Ch 1. Miss next 2 sc. 1 sc in next sc. Ch 3. Cluster in next sc. Rep from * to last 5 sc. Ch 1. Miss next 2 sc. 1 sc in next sc. Ch 2. Miss next sc. 1 dc in last sc. Turn. **18 (19)** clusters.

Next row: Ch 4 (counts as 1 dc and ch 1). Cluster in first ch-2 sp. Ch 1. *(1 sc. Ch 3. Cluster) in next ch-3 sp. Ch 1. Rep from * to last turning ch sp. (1 sc. Ch 2. 1 dc) in 3rd ch of turning ch. Turn.

Rep last row for Basic Cluster Pat until work from marked row measures **3 (3½)** [7.5 (9) cm], ending on a RS or WS row.

Shape top: 1st row: Ch 4 (counts as 1 dc and ch 1). Cluster in first ch-2 sp. Ch 1. *[(1 sc. Ch 3. Cluster) in next ch-3 sp. Ch 1] twice. 1 sc in next ch-3 sp. Ch 3. (Yoh and draw up a loop. Yoh and draw through 2 loops on hook) twice in same ch-3 sp. (Yoh and draw up a loop. Yoh and draw through 2 loops on hook) twice in next ch-3 sp.

Yoh and draw through all 5 loops on hook – cluster 2tog made. Ch 1. Rep from * 3 times more. [(1 sc. Ch 3. Cluster) in next ch-3 sp. Ch 1] **1 (2)** time(s). (1 sc. Ch 2. 1 dc) in 3rd ch of turning ch. Turn. **14 (15)** clusters.

2nd and 3rd rows: Ch 4 (counts as 1 dc and ch 1). Cluster in first ch-2 sp. Ch 1. *(1 sc. Ch 3. Cluster) in next ch-3 sp. Ch 1. Rep from * to last turning ch sp. (1 sc. Ch 2. 1 dc) in 3rd ch of turning ch. Turn.

4th row: Ch 4 (counts as 1 dc and ch 1). Cluster in first ch-2 sp. Ch 1. *1 sc in next ch-3 sp. Ch 3. Cluster 2tog. Ch 1. (1 sc. Ch 3. Cluster) in next ch-3 sp. Ch 1. Rep from * 3 times more. [(1 sc. Ch 3. Cluster) in next ch-3 sp. Ch 1] **1 (2)** time(s). (1 sc. Ch 2. 1 dc) in 3rd ch of turning ch. Turn. **10 (11)** clusters.

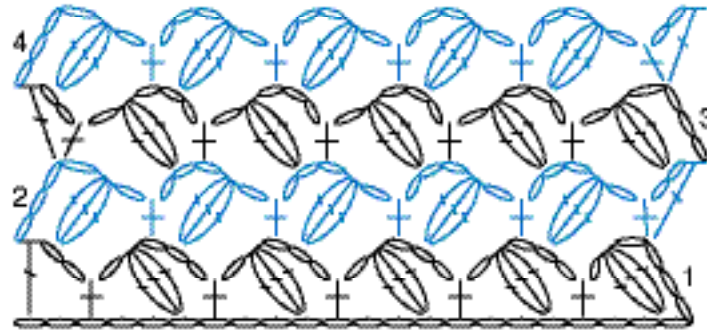
5th row: As 2nd row.

6th row: Ch 4 (counts as 1 dc and ch 1). Cluster in first ch-2 sp. Ch 1. *1 sc in next ch-3 sp. Ch 3. Cluster 2tog. Ch 1. Rep from * **3 (4)** times more. [(1 sc. Ch 3. Cluster) in next ch-3 sp. Ch 1] **1 (0)** time(s). (1 sc. Ch 2. 1 dc) in 3rd ch of turning ch. Turn. 6 clusters.

7th row: Ch 4 (counts as 1 dc and ch 1). Cluster in first ch-2 sp. Ch 1. (1 sc in next ch-3 sp. Ch 3. Cluster 2tog. Ch 1) twice. (1 sc. Ch 3. Cluster) in next ch-3 sp. Ch 1. (1 sc. Ch 2. 1 dc) in 3rd ch of turning ch. Turn.

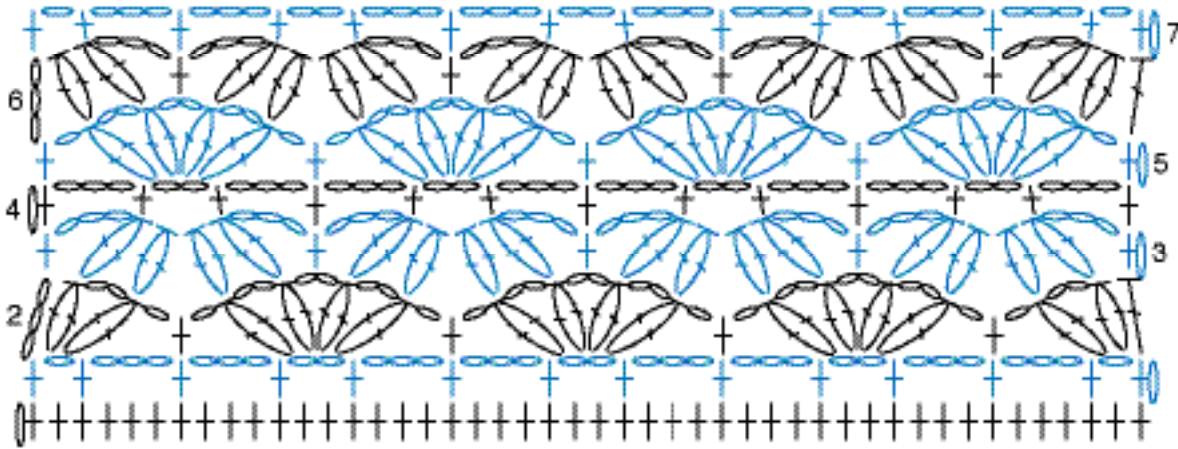
8th row: Ch 1. 1 sc in first dc. (Ch 3. 1 sc in next ch-3 sp) 3 times. Ch 3. 1 sc in 3rd ch of turning ch. Fasten off, leaving a long end. Weave end tightly through final sts of 8th row. Sew center back seam, reversing seam at marked row for cuff turn-back.

DIAGRAM I



BASIC CLUSTER PATTERN

DIAGRAM II



DAISY CHAIN PATTERN

KEY

- = chain (ch)
- ⊕ = single crochet (sc)
- ⌈ = double crochet (dc)
- ⌈ = dc2tog cluster
- ⌈ = cluster

Patons[®]

*Beehive Baby
Sport*

...a part of your life.

P.O. Box 40, Listowel ON N4W 3H3

www.patonsyarns.com

DAISY CHAIN BORDER CARDIGAN & HAT



6 of 6