



Katherine Poole-Fournier
Designer

SUPER FINE



CROCHET | SKILL LEVEL: **INTERMEDIATE**

ABBREVIATIONS

Alt = Alternate

Beg = Beginning

Ch = Chain(s)

Cont = Continue(ity)

Dc = Double crochet

Dcbp = Yoh and draw up a loop

around post of indicated stitch, inserting hook from back to front to back. (Yoh and draw through 2 loops on hook) twice.

Dcfp = Yoh and draw up a loop around post of indicated stitch, inserting hook from front to back to front. (Yoh and draw through 2 loops on hook) twice.

Pat = Pattern

PM = Place marker

Rem = Remain(ing)

Rep = Repeat

Rnd(s) = Round(s)

RS = Right side

Sc = Single crochet

Sc2tog = Draw up a loop in each of next 2 stitches. Yoh and draw through all loops on hook.

Sl st = Slip stitch

Sp(s) = Space(s)

St(s) = Stitch(es)

Tog = Together

Trfp = (Yoh) twice and draw up a loop around post of indicated stitch, inserting hook from front to back to front. (Yoh and draw through 2 loops on hook) 3 times.

WS = Wrong side

Yoh = Yarn over hook

MATERIALS

Patons® Kroy Socks™ (1.75 oz/50 g; 166 yds/152 m)

Sizes	S	M	L	
Flax (55011)	2	2	3	balls

Size U.S. D/3 [3.25 mm] Susan Bates® Silvalume™ crochet hook **or size needed to obtain gauge.** Susan Bates® steel yarn needle. Susan Bates® split-lock stitch count markers.

SIZES

To fit U.S. Women's Shoe Sizes

S	4-6½
M	7-9½
L	10-12½

Finished foot length

S	9" [23 cm]
M	10" [25.5 cm]
L	11" [28 cm]

GAUGE

22 sc and 24 rnds = 4" [10 cm].

INSTRUCTIONS

The instructions are written for smallest size. If changes are necessary for larger sizes the instructions will be written thus (). Numbers for each size are shown in the same color throughout the pattern. When only one number is given in black, it applies to all sizes.

Notes:

- Socks are worked from toe up.
- Rnds are joined with sl st to first sc/dc, excluding toe rnds which are worked as s.
- Ch 2 at beg of rnd **does not** count as st.

WEEK 1

See video link [here](#).

Toe is worked in a continuous spiral. **Do not** work ch at beg of rnd; simply work directly into next st (noting marker to indicate end of rnd moves up each rnd).



Beg using magic loop method, demonstrated [here](#).

1st rnd: Ch 1. 10 sc in ring.

2nd and alt rnds: 1 sc in each st around.

3rd rnd: 2 sc in first st. 2 sc in each st around. 20 sc.

5th rnd: 2 sc in first st. 1 sc in next st. *2 sc in next st. 1 sc in next st. Rep from * around. 30 sc.

7th rnd: 2 sc in first st. 1 sc in each of next 2 sts. *2 sc in next st. 1 sc in each of next 2 sts. Rep from * around. 40 sc.

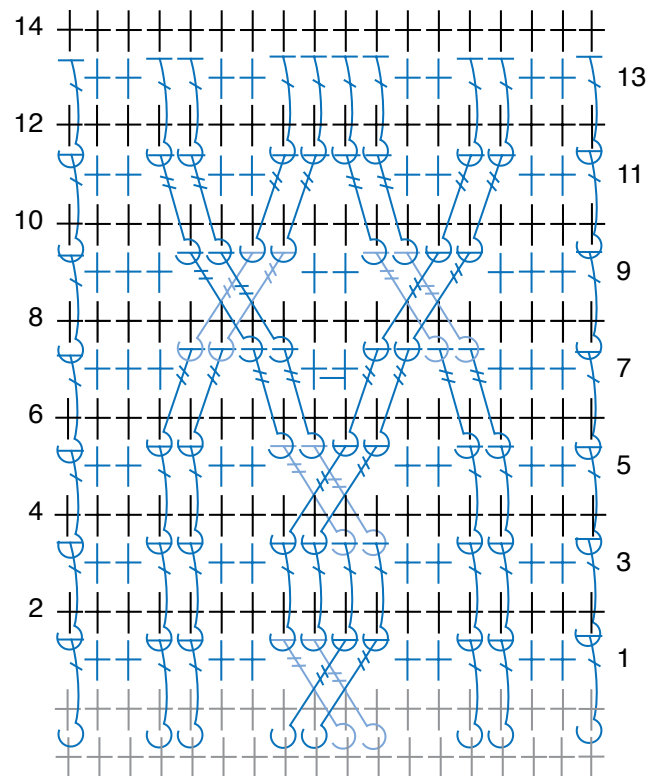
9th rnd: 2 sc in first st. 1 sc in each of next 3 sts. *2 sc in next st. 1 sc in each of next 3 sts. Rep from * around. 50 sc.

11th rnd: 2 sc in first st. 1 sc in each of next **24 (9-4)** sts. *2 sc in next st. 1 sc in each of next **24 (7-4)** sts. Rep from * around. **52 (56-60)** sc. Turn.

Note: From this point forward, all rnds are **joined and turned**.

12th rnd: (WS). Ch 1. 1 sc in each sc to end of rnd. Join. **Turn.**

END OF WEEK 1



CABLE PATTERN

STITCH KEY

⊕ = single crochet (sc)

⌋ = front post double
crochet (dcfp)

⌋ = front post treble
crochet (trfp)