



Katherine Poole-Fournier
Designer



CROCHET | SKILL LEVEL: **EASY**

ABBREVIATIONS

Approx =

Approximately

Beg = Beginning

Ch = Chain(s)

Cont = Continue

Dc = Double crochet

Dc2(3)tog = (Yoh

and draw up a

loop in next st. Yoh

and draw through

2 loops on hook) 2 (3

times). Yoh and draw

through all loops on

hook.

Pat = Pattern

Rep = Repeat

Rnd(s) = Round(s)

RS = Right side

Sc = Single crochet

Sl st = Slip stitch

Sp(s) = Space(s)

St(s) = Stitch(es)

WS = Wrong side

Yoh = Yarn over hook

MATERIALS

Patons® Linen™ (3.5 oz/100 g; 275 yds/251 m)

Contrast A Bee Pollen (14012) **1 ball**

Contrast B English Rose (14007) **1 ball**

Contrast C Blue Hosta (14015) **1 ball**

Size U.S. G/6 (4 mm) Susan Bates® Silvalume® crochet hook **or size needed to obtain gauge.** Susan Bates® stitch marker. Susan Bates® yarn needle.

MEASUREMENTS

Approx 20" x 61" [51 x 155 cm].

GAUGE

17 sc and 22 rows = 4" [10 cm].

INSTRUCTIONS

Notes:

- Ch 2 at beg of rows **does not** count as st.

- Ch 5 at beg of rows counts as (1 dc. Ch 2).

Honeycomb Filet Section

See diagram on page 5.

With A, ch 85.

1st row: (RS). 1 dc in 3rd ch from hook. 1 dc in each ch to end of chain. Turn. 83 dc.

2nd row: Ch 2. 1 dc in each of first 4 dc. [(Ch 1. Skip next dc. 1 dc in next dc) 5 times. 1 dc in each of next 12 dc] 3 times. (Ch 1. Skip next dc. 1 dc in next dc) 5 times. 1 dc in each of last 3 dc. Turn.

3rd row: Ch 2. 1 dc in each of first 3 sts. [Ch 1. Skip next st. (1 dc in next ch-1 sp. 1 dc in next dc) 4 times. 1 dc in next ch-1 sp. Ch 1. Skip next dc. 1 dc in each of next 11 dc] 3 times. Ch 1. Skip next dc. (1 dc in next ch-1 sp. 1 dc in next dc) 4 times. 1 dc in next ch-1 sp. Ch 1. Skip next dc. 1 dc in each of last 3 dc. Turn.

4th row: Ch 2. 1 dc in each of first 2 dc. (Ch 1. Skip next dc. 1 dc in next ch-1 sp. 1 dc in each of next 9 dc. 1 dc in next ch-1 sp. Ch 1. Skip next dc. 1 dc in each of next 9 dc) 3 times. Ch 1. Skip next dc. 1 dc in next ch-1 sp. 1 dc in each of next 9 dc. 1 dc in next ch-1 sp. Ch 1. Skip next dc. 1 dc in each of last 2 dc. Turn.

5th row: Ch 2. 1 dc in first dc. [Ch 1. Skip next dc. 1 dc in next ch-1 sp. 1 dc in each of next 11 dc. 1 dc in next ch-1 sp. (Ch 1. Skip next dc. 1 dc in next dc) 4 times] 3 times. Ch 1. Skip next dc. 1 dc in next ch-1 sp. 1 dc in each of next 11 dc. 1 dc in next ch-1 sp. Ch 1. Skip next dc. 1 dc in last dc. Turn.

6th row: Ch 2. 1 dc in first dc. 1 dc in next ch-1 sp. [Ch 1. Skip next dc. 1 dc in each of next 11 dc. Ch 1. Skip next dc. (1 dc in next ch-1 sp. 1 dc in next dc) 4 times. 1 dc in next ch-1 sp] 3 times. Ch 1. Skip next dc. 1 dc in each of next 11 dc. Ch 1. Skip next dc. 1 dc in next ch-1 sp. 1 dc in last dc. Turn.

7th row: Ch 2. 1 dc in each of first 2 dc. 1 dc in next ch-1 sp. (Ch 1. Skip next dc. 1 dc in each of next 9 dc. Ch 1. Skip next dc. 1 dc in next ch-1 sp. 1 dc in each of next 9 dc. 1 dc in next ch-1 sp) 3 times. Ch 1. Skip next dc. 1 dc in each of next 9 dc. Ch 1. Skip next dc. 1 dc in next ch-1 sp. 1 dc in each of last 2 dc. Turn.

8th row: Ch 2. 1 dc in each of first 3 dc. 1 dc in next ch-1 sp. [(Ch 1. Skip next dc. 1 dc in next dc) 4 times. Ch 1. Skip next dc. 1 dc in next ch-1 sp. 1 dc in each of next 11 dc. 1 dc in next ch-1 sp] 3 times. (Ch 1. Skip next dc. 1 dc in next dc) 4 times. Ch 1. Skip next dc. 1 dc in next ch-1 sp. 1 dc in each of last 3 dc. Turn.

Rep 3rd to 8th rows for Honeycomb Filet pat until work from beg measures approx 19½" [49.5 cm], on an 8th row.

Final row: Ch 2. 1 dc in each dc and ch-1 sp to end of row. Fasten off.

Floral Section

See diagram on page 5.
Join B.

1st row: Ch 2. 1 dc in each of next 41 dc. 2 dc in next dc. 1 dc in each dc to end of row. Turn. 84 dc.

2nd row: Ch 2. 1 dc in each of first 2 dc. *Ch 2. Skip next 2 dc. 1 dc in each of next 4 dc. Rep from * to last 4 sts. Ch 2. Skip next 2 dc. 1 dc in each of last 2 dc. Turn.

3rd row: Ch 2. 1 dc in each of first 2 dc. 2 dc in next ch-2 sp. 1 dc in next dc. (Ch 2. Skip next 2 dc. 1 dc in next dc. 2 dc in next ch-2 sp. 1 dc in next dc) twice. [Ch 7. Skip next 2 dc. 1 dc in next dc. 2 dc in next ch-2 sp. 1 dc in next dc. (Ch 2. Skip next 2 dc. 1 dc in next dc. 2 dc in next ch-2 sp. 1 dc in next dc) 3 times] twice. Ch 7. Skip next 2 dc. 1 dc in next dc. 2 dc in next ch-2 sp. 1 dc in next dc. (Ch 2. Skip next 2 dc. 1 dc in next dc. 2 dc in next ch-2 sp. 1 dc in next dc) twice. 1 dc in last dc. Turn.

4th row: Ch 2. 1 dc in each of first 2 dc. Ch 2. Skip next 2 dc. 1 dc in next dc. 2 dc in next ch-2 sp. 1 dc in next dc. (Ch 2. Skip next 2 dc. 1 dc in next dc. 2 dc in next ch-2 sp. 1 dc in next dc. Ch 4. Skip next 3 dc. 1 sc in next ch-7 sp. Ch 4. Skip next 3 dc. 1 dc in next dc. 2 dc in next ch-2 sp. 1 dc in next dc. Ch 2. Skip next 2 dc. 1 dc in next dc. 2 dc in next ch-2 sp. 1 dc in next dc) 3 times. Ch 2. Skip next 2 dc. 1 dc in each of last 2 dc. Turn.

5th row: Ch 2. 1 dc in each of first 2 dc. 2 dc in next ch-2 sp. 1 dc in next dc. Ch 2. Skip next 2 dc. 1 dc in next dc. 2 dc in next ch-2 sp. 1 dc in next dc. (Ch 6. Skip next 3 dc. 1 sc in next ch-4 sp. 1 sc in next sc. 1 sc in next ch-4 sp. Ch 6. Skip next 3 dc. 1 dc in next dc. 2 dc in next ch-2 sp. 1 dc in next dc. Ch 2. Skip next 2 dc. 1 dc in next dc. 2 dc in next ch-2 sp. 1 dc in next dc) 3 times. 1 dc in last dc. Turn.

6th row: Ch 2. 1 dc in each of first 2 dc. Ch 2. Skip next 2 dc. (1 dc in next dc. 2 dc in next ch-2 sp. 1 dc in next dc. Ch 8. 1 sc in next ch-6 sp. 1 sc in each of next 3 sc. 1 sc in next ch-6 sp. Ch 8. Skip next 3 dc) 3 times. 1 dc in next dc. 2 dc in next ch-2 sp. 1 dc in next dc. Ch 2. Skip next 2 dc. 1 dc in each of last 2 dc. Turn.

7th row: Ch 2. 1 dc in each of first 2 dc. 2 dc in next ch-2 sp. 1 dc in next dc. Ch 2. Skip next 2 dc. 1 dc in next dc. (3 dc in next ch-8 sp. Ch 6. Skip next sc. 1 sc in each of next 3 sc. Ch 6. Skip next sc. 3 dc in next ch-8 sp. 1 dc in next dc. Ch 2. Skip next 2 dc. 1 dc in next dc) 3 times. 2 dc in next ch-2 sp. 1 dc in each of last 2 dc. Turn.

8th row: Ch 2. 1 dc in each of first 2 dc. Ch 2. Skip next 2 dc. 1 dc in next dc. 2 dc in next ch-2 sp. 1 dc in next dc. (Ch 2. Skip next 2 dc. 1 dc in next dc. 3 dc in next ch-6 sp. Ch 6. Skip next sc. 1 sc in next sc. Ch 6. Skip next sc. 3 dc in next ch-6 sp. 1 dc in next dc. Ch 2. Skip next 2 dc. 1 dc in next dc. 2 dc in next ch-2 sp. 1 dc in next dc) 3 times. Ch 2. Skip next 2 dc. 1 dc in each of last 2 dc. Turn.

9th row: Ch 2. 1 dc in each of first 2 dc. 2 dc in next ch-2 sp. 1 dc in next dc. [Ch 2. Skip next 2 dc. 1 dc in next dc. 2 dc in next ch-2 sp. 1 dc in next dc. Ch 2. Skip next 2 dc. 1 dc in next dc. 3 dc in next ch-6 sp. Ch 2. Skip next sc. 3 dc in next ch-6 sp. 1 dc in next dc. (Ch 2. Skip next 2 dc. 1 dc in next dc. 2 dc in next ch-2 sp. 1 dc in next dc)] Ch 2. Skip next 2 dc. 1 dc in next dc. 2 dc in next ch-2 sp. 1 dc in each of last 2 dc. Turn.

10th row: Ch 2. 1 dc in each of first 2 dc. Ch 2. Skip next 2 dc. 1 dc in next dc. 2 dc in next ch-2 sp. 1 dc in next dc. *Ch 2. Skip next 2 dc. 1 dc in next dc. 2 dc in next ch-2 sp. 1 dc in next dc. Rep from * to last 4 dc. Ch 2. Skip next 2 dc. 1 dc in each of last 2 dc. Turn.

Rep 3rd to 10th rows for Floral Section pat until work from color change measures approx 19½" [49.5 cm], ending on a 10th row.

Final row: Ch 2. 1 dc in each dc and 2 dc in each ch-2 sp to end of row. Fasten off.

Leaf Section

See diagram on page 4.
Join C.

Set-up row 1: Ch 2. 1 dc in each of first 28 dc. (2 dc in next dc. 1 dc in each of next 27 dc) twice. Turn. 86 dc.

Set-up row 2: Ch 5. Skip next 3 dc. [2 dc in next dc. 1 dc in each of next 5 dc. 2 dc in next dc. Ch 1. 1 dc in next dc. Ch 1. 2 dc in next dc. 1 dc in each of next 5 dc. 2 dc in next dc.* Ch 3. Skip next 6 dc] 3 times, ending at * on last rep. Ch 2. Skip next 3 dc. 1 dc in last dc. Turn.

1st row: Ch 5. Skip first ch-2 sp. *Dc2tog. 1 dc in each of next 5 dc. Dc2tog. Ch 2. Skip next ch. 3 dc in next dc. Ch 2. Skip next ch. Dc2tog. 1 dc in each of next 5 dc. Dc2tog. Ch 2. Skip next ch-sp. Rep from * to last dc. 1 dc in 3rd ch of turning ch. Turn.

2nd row: Ch 5. Skip first ch-2 sp. *Dc2tog. 1 dc in each of next 3 dc. Dc2tog. Ch 2. Skip next ch-2 sp. 3 dc in next dc. Ch 1. Skip next dc. 3 dc in next dc. Ch 2. Skip next ch-2 sp. Dc2tog. 1 dc in each of next 3 dc. Dc2tog. Ch 2. Skip next ch-2 sp. Rep from * to last dc. 1 dc in 3rd ch of turning ch. Turn.

3rd row: Ch 5. Skip first ch-2 sp. *Dc2tog. 1 dc in next dc. Dc2tog. Ch 2. Skip next ch-2 sp. 2 dc in next dc. 1 dc in next dc. 2 dc in next dc. Ch 2. Skip next ch-2 sp. 2 dc in next dc. 1 dc in next dc. 2 dc in next dc. Ch 2. Skip next ch-2 sp. Dc2tog. 1 dc in next dc. Dc2tog. Ch 2. Skip next ch-2 sp. Rep from * to last dc. 1 dc in 3rd ch of turning ch. Turn.

4th row: Ch 5. Skip first ch-2 sp. *Dc3tog. Ch 2. Skip next ch-2 sp. 2 dc in next dc. 1 dc in each of next 3 dc. 2 dc in next dc. Ch 3. Skip next ch-2 sp. 2 dc in next dc. 1 dc in each of next 3 dc. 2 dc in next dc. Ch 2. Skip next ch-2 sp. Dc3tog. Ch 2. Skip next ch-2 sp. Rep from * to last dc. 1 dc in 3rd ch of turning ch. Turn.

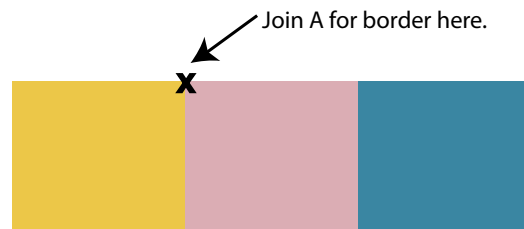
5th row: Ch 5. Skip all of next (Ch 2. Dc3tog. Ch 2). 2 dc in next dc. 1 dc in each of next 5 dc. 2 dc in next dc. Ch 1. 1 dc in next ch-3 sp. Ch 1. 2 dc in next dc. 1 dc in each of next 5 dc. 2 dc in next dc. *Ch 2. Skip all of next (Ch 2. Dc3tog. Ch 2. Dc3tog. Ch 2). 2 dc in next dc. 1 dc in each of next 5 dc. 2 dc in next dc. Ch 1. 1 dc in next ch-3 sp. Ch 1. 2 dc in next dc. 1 dc in each of next 5 dc. 2 dc in next dc. Rep from * to last dc3tog. Ch 2. Skip all of next (Ch 2. Dc3tog. Ch 2). 1 dc in 3rd ch of turning ch. Turn.

Rep 2nd to 5th rows for Leaf Section pat until work from color change measures approx 19½" [49.5 cm], ending on a 5th row.

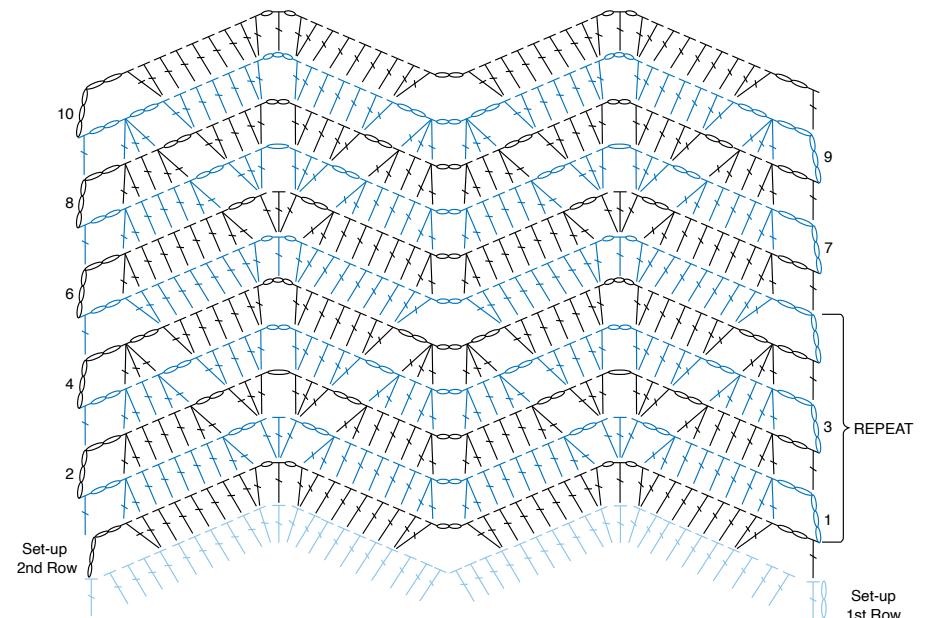
Final row: Ch 2. Working 1 dc in each st and 2 dc in each ch-2 sp, (Work 20 dc. Dc2tog) 3 times. Work 1 dc in each st and 2 dc in each ch-2 sp to end of row. 83 sts. Fasten off.

Border

With WS facing, join A with sl st to upper far right side of Honeycomb Filet section. Work in sc evenly around perimeter of Honeycomb Filet section, working 3 sc in each corner, breaking A and joining B upon reaching Floral Section. With B, work in sc until Leaf Section. Break B and join C. Cont as established, changing colors as needed, working 3 sc in each corner and joining with sl st to first sc at end of rnd. Fasten off.



LEAF SECTION

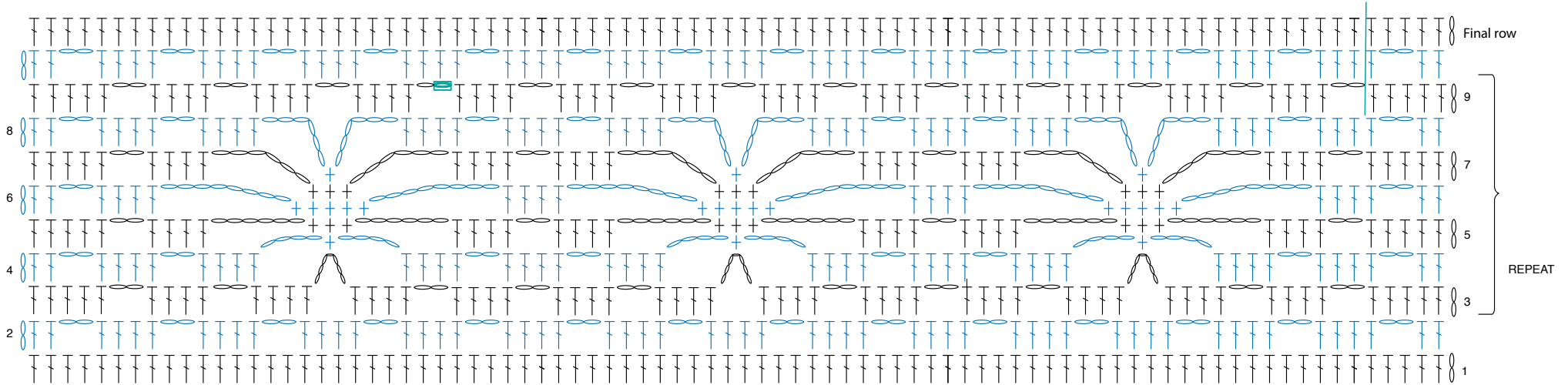


REDUCED SAMPLE OF PATTERN

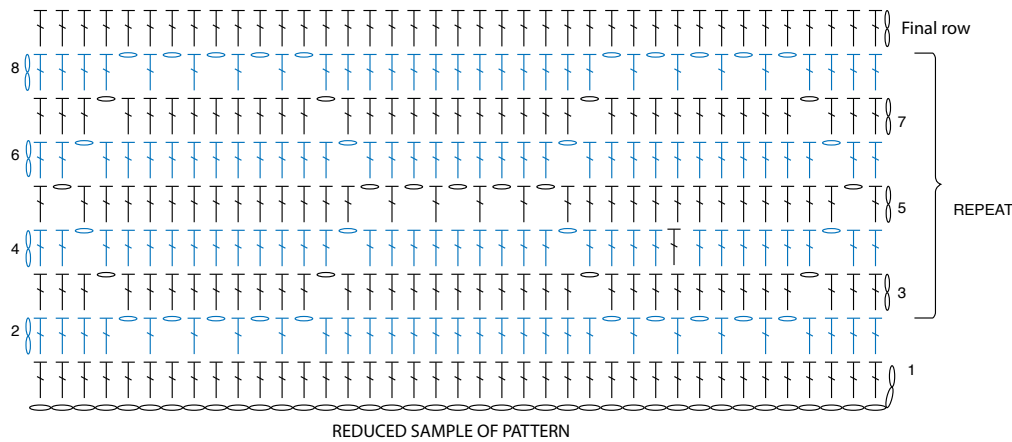
STITCH KEY

- = chain (ch)
- = slip stitch (sl st)
- ⊕ = single crochet (sc)
- ⌋ = double crochet (dc)
- ⌋ = double crochet 2 together (dc2tog)
- ⌋ = double crochet 3 together (dc3tog)

FLORAL SECTION

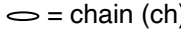
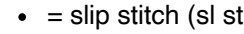






HONEYCOMB SECTION



REDUCED SAMPLE OF PATTERN

STITCH KEY

-  = chain (ch)
-  = slip stitch (sl st)
-  = single crochet (sc)
-  = double crochet (dc)
-  = double crochet 2 together (dc2tog)
-  = double crochet 3 together (dc3tog)