



CROCHET | SKILL LEVEL: INTERMEDIATE

ABBREVIATIONS

| | | |
|----------------------------|------------------------------|-----------------------------|
| Approx = | Dec('d) = Decrease(d) | St(s) = Stitch(es) |
| Approximately | Inc('d) = Increase(d) | Tr = Treble crochet |
| Beg = Beginning | Rep = Repeat | WS = Wrong side |
| Ch = Chain(s) | Sc = Single crochet | Yoh = Yarn over hook |
| Dc = Double crochet | Sl st = Slip stitch | |

MEASUREMENTS

Approx 12" x 42" [30.5 x 106.5 cm].

GAUGE

20 sc and 22 rows = 4" [10 cm].

INSTRUCTIONS

Notes:

- Wrap is worked sideways.
- Ch 4 at beg of Wrap rows counts as tr.
- Ch 3 at beg of Wrap rows **does not** count as st.
- Work all sts in back loops only.

Ch 5. Place marker on 4th ch from hook. See diagram on page 3.

Inc Section:

1st row: (WS). 1 tr in 5th ch from hook (counts as 2 tr). Turn. 2 tr.

2nd row: Ch 4. 2 tr in next tr. Turn. 3 tr.

3rd row: Ch 4. 1 tr in first tr (counts as 2 tr). 1 tr in each of next 2 tr. Turn. 4 tr.

4th row: Ch 4. 1 tr in each of next 2 tr. 2 tr in last tr. Turn. 5 tr.

5th row: Ch 4. 1 tr in first tr (counts as 2 tr). 1 tr in each of next 4 tr. Turn. 6 tr.

6th row: Ch 4. 1 tr in each of next 4 tr. 2 tr in last tr. Turn. 7 tr.

7th row: Ch 4. 1 tr in first tr (counts as 2 tr). 1 tr in each of next 6 tr. Turn. 8 tr.

8th row: Ch 4. 1 tr in each tr to last tr. 2 tr in last tr. Turn. 1 st inc'd.

9th row: Ch 4. 1 tr in first tr (counts as 2 tr). 1 tr in each tr to end of row. Turn. 1 st inc'd.

10th to 29th rows: Rep 8th and 9th rows 10 times more. 30 tr.

MATERIALS

Patons® Grace™ (1.75 oz/50 g; 136 yds/125 m)

Natural (62008)

4 balls or 452 yds/413 m

Size U.S. G/6 (4 mm) crochet hook **or size needed to obtain gauge.**
Stitch marker. Yarn needle.

Center:

30th row: Ch 4. 1 tr in each tr to end of row. Turn. 30 tr.

Dec Section:

31st row: Ch 3. 1 tr in next tr – beg tr2tog made. 1 tr in each tr to end of row. Turn. 1 st dec'd.

32nd row: Ch 4. 1 tr in each tr to last 2 tr. *[(Yoh) twice. Draw up a loop in next st. (Yoh and draw through 2 loops on hook) twice] twice. Yoh and draw through all 3 loops on hook – tr2tog made. Turn. 1 st dec'd.

33rd to 56th rows: Rep 31st and 32nd rows 12 times more. 4 sts.

57th row: Beg tr2tog. 1 tr in each of next 2 tr. Turn. 3 sts.

58th row: Ch 4. Tr2tog. Turn. 2 sts.

59th row: Beg tr2tog. 1 st. Fasten off.

EDGING

Note: Ch 3 at beg of Edging rows counts as dc.

With WS facing, join yarn with sl st at marker on foundation ch of Wrap. See Diagram on page 3.

1st row: (WS). Ch 1. Work 241 sc evenly along bottom edge of Wrap (multiple of 8 sts + 1). Turn.

2nd row: Ch 1. 1 sc in first sc. *Skip next 3 sc. 9 dc in next sc – Shell made. Skip next 3 sc. 1 sc in next sc. Rep from * across. Turn. 30 Shells and 31 sc.

3rd row: Ch 3. Working in front loops only, 1 dc in first dc. *Ch 1. Skip next 3 dc. 1 sc in each of next 3 dc. Ch 1. Skip next 3 dc. (1 dc. Ch 1. 1 dc) in next sc – V-st made. Rep from * to last Shell. Ch 1. Skip next 3 dc. 1 sc in each of next 3 dc. Ch 1. Skip last 3 dc. 2 dc in last sc. Turn. 30 3-sc groups, 29 V-sts and 4 dc.

4th row: Ch 3. Working in both loops, 4 dc in first dc. *1 sc in center sc of next 3-sc group. Shell in center of next V-st. Rep from * to last 3-sc group. 1 sc in center sc of next 3-sc group. 5 dc in last dc. Turn. 29 Shells, 30 sc and 10 dc.

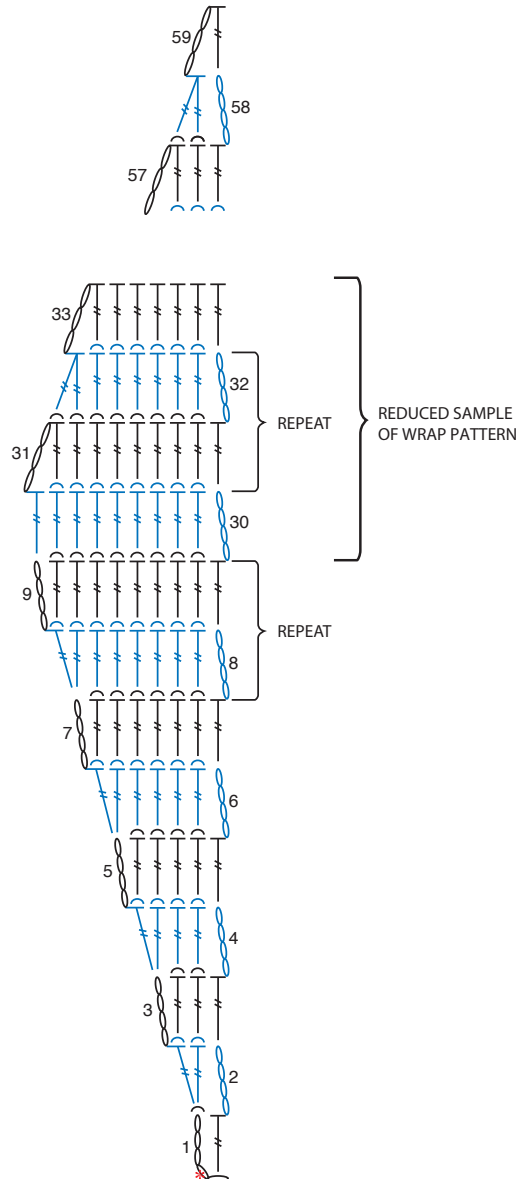
5th row: Ch 1. Working in front loops only, 1 sc in each of first 2 dc. *Ch 1. Skip next 3 dc. V-st in next sc. Ch 1. Skip next 3 dc.** 1 sc in each of next 3 dc. Rep from * across, ending last rep at **. 1 sc in each of last 2 dc. Turn. 30 V-sts, 29 3-sc groups and 4 sc.

6th row: Ch 1. Working in back loops only, 1 sc in first sc. *Shell in next V-st. 1 sc in center sc of next 3-sc group. Rep from * to last V-st. Shell in last V-st. Skip next sc. 1 sc in last sc. Turn. 30 Shells and 31 sc.

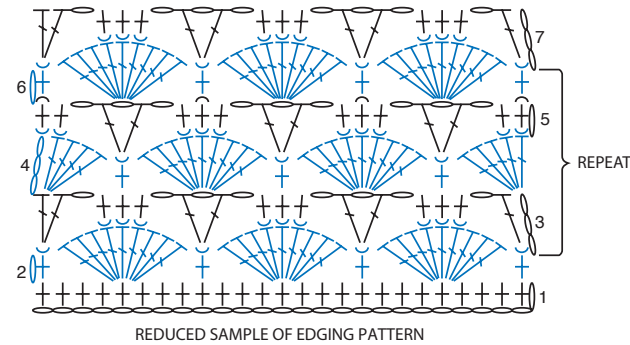
7th to 10th rows: Rep 3rd to 6th rows once more. Fasten off.



WRAP DIAGRAM



EDGING DIAGRAM



STITCH KEY

- = chain (ch)
- ⊥ = single crochet (sc)
- ⊥ = double crochet (dc)
- ⊥ = treble crochet (tr)
- ⊥ = tr2tog
- ⌒ = worked in back loop only
- ⌒ = worked in front loop only
- * = stitch marker