



Julia Madill  
Designer



CROCHET | SKILL LEVEL: **INTERMEDIATE**

### ABBREVIATIONS

**Approx** = Approximately

**Beg** = Begin(ning)

**Ch** = Chain(s)

**Dc** = Double crochet

**Dc3tog** = (Yoh and draw up a loop in next st. Yoh and draw through 2 loops on hook) 3 times. Yoh and draw through all loops on hook.

**Dcbp** = Yoh and draw up a loop around post of next stitch at back of work, inserting hook from right to left. (Yoh and draw through 2 loops on hook) twice

**Dcfp** = Yoh and draw up a loop around post of next stitch at front

of work, inserting hook from right to left. (Yoh and draw through 2 loops on hook) twice

**Hdc** = Half double crochet

**Pat** = Pattern

**Rep** = Repeat

**Rnd(s)** = Round(s)

**RS** = Right side

**Sc** = Single crochet

**Sl st** = Slip stitch

**Sp(s)** = Space(s)

**St(s)** = Stitch(es)

**Tog** = Together

**WS** = Wrong Side

**Yoh** = Yarn over hook

### MATERIALS

**Patons® Lincoln Fog™** (3.5 oz/100 g; 190 yds/174 m)

**Contrast A** Wisteria (12017) **2 balls**

**Contrast B** Charcoal (12009) **2 balls**

**Contrast C** Ochre (12012) **2 balls**

Size U.S. I/9 (5.5 mm) crochet hook **or size needed to obtain gauge.**

### MEASUREMENTS

Approx 11 x 110" [28 x 279.5 cm], excluding fringe.

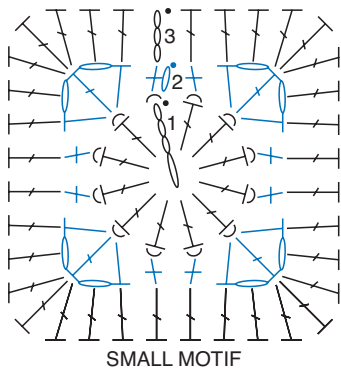
### GAUGE

11.5 sc and 14 rows = 4" [10 cm].

## INSTRUCTIONS

### SMALL MOTIF SECTION 1

#### Small Motif (make 9)



Make 3 with C as Color 1, B as Color 2 and A as Color 3.  
 Make 4 with A as Color 1, C as Color 2 and B as Color 3.  
 Make 2 with B as Color 1, A as Color 2 and C as Color 3.

With Color 1, ch 4.

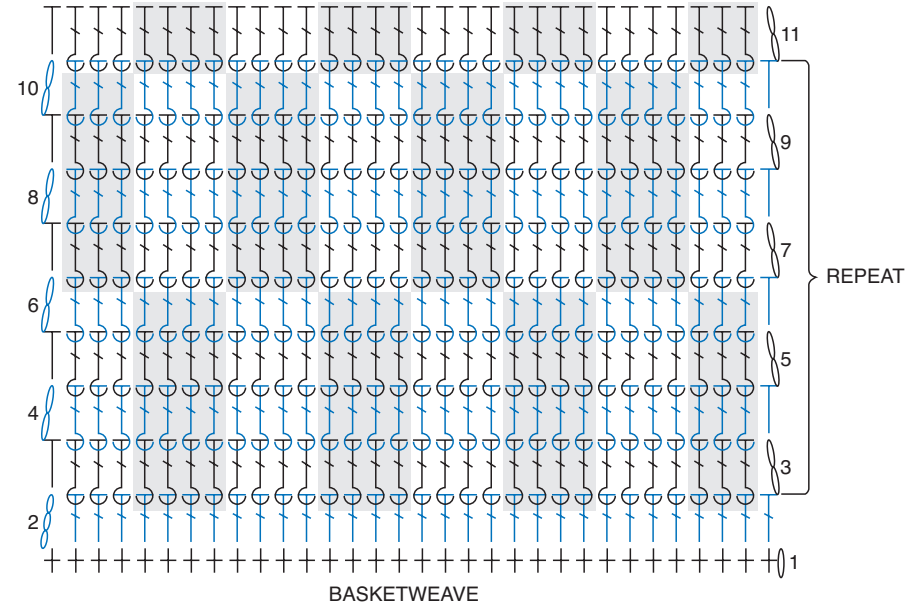
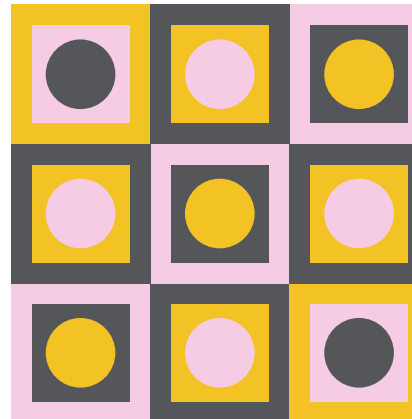
**1st rnd:** 11 dc in 4th ch from hook. Join Color 2 with sl st to top of ch-4. Break Color 1. 12 dc.

**2nd rnd:** With Color 2, ch 1. *Working in back loops only*, 1 sc in same sp as last sl st. \*(1 hdc. Ch 1. 1 dc. Ch 1. 1 hdc) in next dc. 1 sc in each of next 2 dc. Rep from \* around, omitting last sc of last

rep. Join Color 3 with sl st to first sc. Break color 2.

**3rd rnd:** With Color 3, ch 3 (counts as dc). \*1 dc in next hdc. 1 dc in next ch-1 sp. 3 dc in next dc. 1 dc in next ch-1 sp. 1 dc in next hdc. 1 dc in each of each of next 2 sc. Rep from \* around, omitting last dc of last rep. Join with sl st to top of ch-3. Fasten off.

Sew Motifs tog into square of 9 as seen in diagram.



### BASKETWEAVE SECTION 1

With RS facing, join C with sl st to top right corner of Small Motif Section 1.

**1st row:** (RS). Ch 1. Work 32 sc evenly across top edge Small Motif Section 1. Turn.

**2nd row:** Ch 3 (counts as dc). 1 dc in each sc to end of row. Turn.

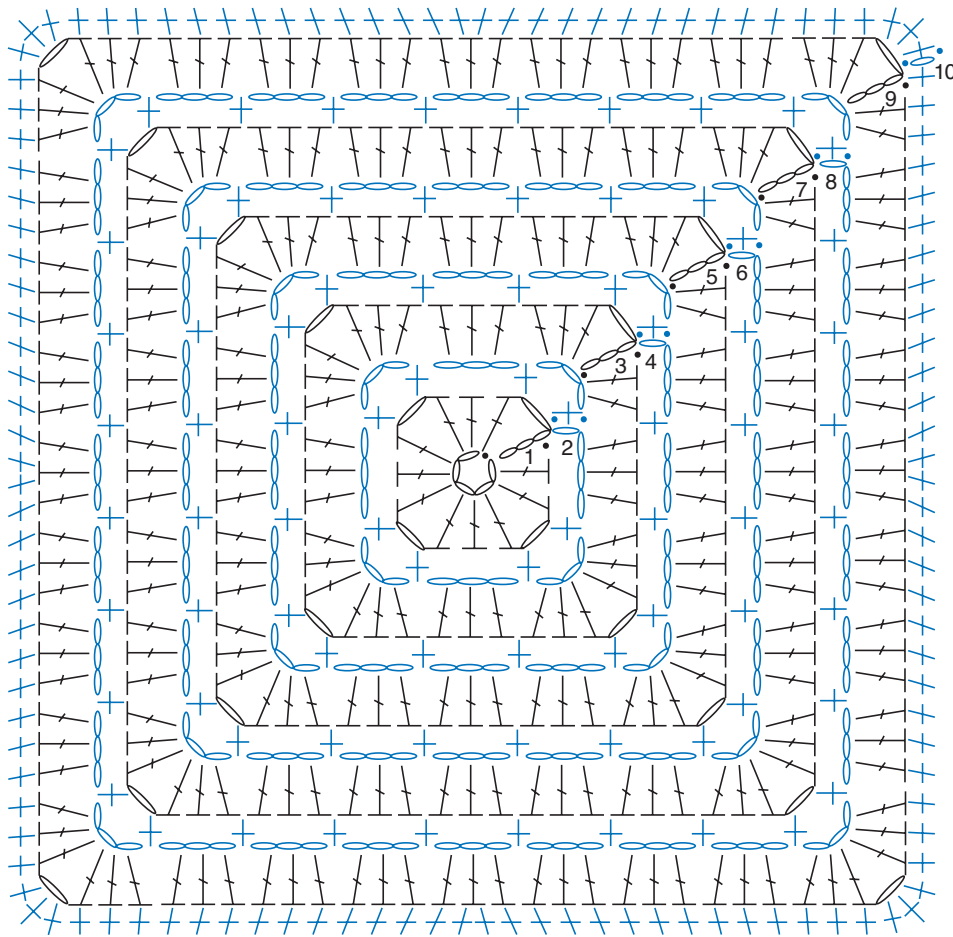
**3rd to 6th rows:** Ch 2 (counts as hdc). 1 dcfp around each of next 3 sts. \*1 dcbp around each of next 4 sts. 1 dcfp around each of next 4 sts. Rep from \* to last 4 sts.

1 dcbp around each of next 3 sts. 1 hdc in last st. Turn.

**7th to 10th rows:** Ch 2 (counts as hdc). 1 dcbp around each of next 3 sts. \*1 dcfp around each of next 4 sts. 1 dcbp around each of next 4 sts. Rep from \* to last 4 sts. 1 dcfp around each of next 3 sts. 1 hdc in last st. Turn.

Rep 3rd to 10th rows until Basketweave Section 1 measures approx 11" [28 cm], ending on a 6th or 10th row.

**Next row:** Ch 1. 1 sc in each st to end of row. Fasten off.



LARGE MOTIF

## LARGE MOTIF SECTION 1

Make with A as Color 1 and B as Color 2.

**Note:** Carry color not on use loosely up WS of work.

With Color 1, ch 5. Join with sl st to first ch to form ring.

**1st rnd:** Ch 4 (counts as 1 dc and ch-1 sp). (3 dc. Ch 1) 3 times in ring. 2 dc in ring. Join with sl st to 3rd ch of ch-4.

**2nd rnd:** Join Color 2 with sl st in 1st ch-1 sp. Ch 1. (1 sc. Ch 3. 1 sc) in same sp as last sl st. Ch 3. \*(1 sc. Ch 3. 1 sc) in next ch-1 sp. Ch 3. Rep from \* twice more. Join with sl st to first sc.

**3rd rnd:** Join Color 1 with sl st in first corner ch-3 sp. Ch 4 (counts as 1 dc and ch-1 sp). 3 dc in same sp as last sl st. 3 dc in next ch-3 sp. \*(3 dc. Ch 1. 3 dc) in next ch-3 sp. 3 dc in next ch-3 sp. Rep from \* twice more. 2 dc in first ch-3 sp. Join with sl st to 3rd ch of beg ch 4.

**4th rnd:** Join Color 2 with sl st in first ch-1 sp. Ch 1. (1 sc. Ch 3. 1 sc) in same sp as last sl st - Corner. Ch 3. (1 sc in sp between next 2 groups of 3-dc. Ch 3) twice. \*(1 sc. Ch 3. 1 sc) in next ch-1 sp - Corner. Ch 3. (1 sc in sp between next 2 groups of 3-dc. Ch 3) twice. Rep from \* twice more. Join with sl st to first sc.

**5th rnd:** Join Color 1 with sl st in first corner ch-3 sp. Ch 4 (counts as 1 dc and ch-1 sp). 3 dc in same

sp as last sl st. 3 dc in each ch-3 sp to next Corner. \*(3 dc. Ch 1. 3 dc) in next Corner ch-3 sp. 3 dc in each ch-3 sp to next Corner. Rep from \* twice more. 2 dc in first ch-3 sp. Join with sl st to 3rd ch of beg ch-4.

**6th rnd:** Join Color 2 with sl st in first ch-1 sp. Ch 1. (1 sc. Ch 3. 1 sc) in same sp as last sl st - Corner. Ch 3. (1 sc in sp between next 2 groups of 3-dc. Ch 3) 4 times. \*(1 sc. Ch 3. 1 sc) in next ch-1 sp - Corner. Ch 3. (1 sc in sp between next 2 groups of 3-dc. Ch 3) 4 times. Rep from \* twice more. Join with sl st to first sc.

**7th rnd:** As 5th rnd.

**8th rnd:** Join Color 2 with sl st in first ch-1 sp. Ch 1. (1 sc. Ch 3. 1 sc) in same sp as last sl st - Corner. Ch 3. (1 sc in sp between next 2 groups of 3-dc. Ch 3) 6 times. \*(1 sc. Ch 3. 1 sc) in next ch-1 sp - Corner. Ch 3. (1 sc in sp between next 2 groups of 3-dc. Ch 3) 6 times. Rep from \* twice more. Join with sl st to first sc. Break Color 2.

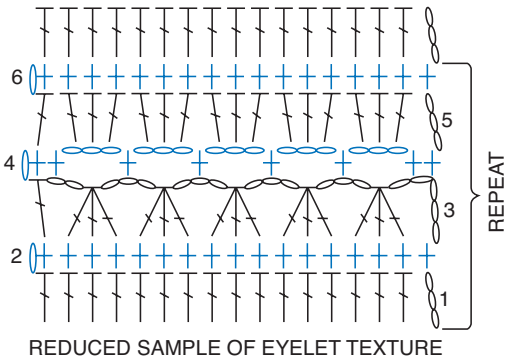
**9th rnd:** As 5th rnd.

**10th rnd:** With Color 1, sl st in first ch-1 sp. Ch 1. Beg in same sp

as last sl st, \*3 sc in next ch-1 sp. 1 sc in each of next 13 dc. 2 sc in next dc. 1 sc in each of next 13 dc. Rep from \* around. Join with sl st to first sc. Fasten off.

Sew Large Motif Section 1 to top of Basketweave Section 1.

## EYELET TEXTURE SECTION 1



With RS facing, join B with sl st to top right corner sc of Large Motif Section 1.

**1st row:** (RS). Ch 3 (counts as dc). 1 dc in each of next 31 sc. 32 dc. Turn.

**2nd row:** Ch 1. 1 sc in each dc to end of row. Turn.

**3rd row:** Ch 5 (counts as dc and ch-2). Dc3tog. \*Ch 3. Dc3tog.

Rep from \* to last sc. Ch 2. 1 dc in last sc. Turn.

**4th row:** Ch 1. 1 sc in first dc. 1 sc in next ch-2 sp. \*Ch 3. 1 sc in next ch-3 sp. Rep from \* to last ch-5 sp. Ch 3. 1 sc in last ch-5 sp. 1 sc in top of 3rd ch of ch-5 sp. Turn.

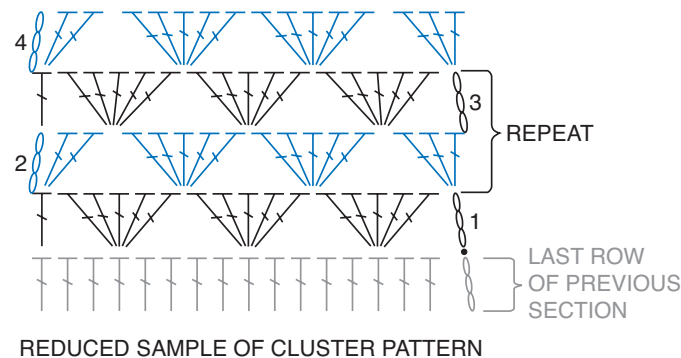
**5th row:** Ch 3 (counts as dc). 3 dc in each ch-3 sp to last sc. 1 dc in last sc. Turn.

**6th row:** Ch 1. 1 sc in each dc to end of row. Turn.

Rep 1st to 6th rows until Eyelet Texture Section measures approx 11" [28 cm] ending on a 1st row. Fasten off.

## CLUSTER SECTION 1

**Note:** Ch 3 at beg of rnds counts as dc throughout. Carry color not in use loosely up side of work.



With RS facing, join C with sl st to first st of Eyelet Texture Section 1.

**1st row:** (RS). Ch 3 (counts as dc). Skip next 2 sts. 5 dc in next st. \*Skip next 4 sts. 5 dc in next st. Rep from \* to last 3 sts. Skip next 2 sts. 1 dc in last st. Join B. Turn.

**2nd row:** With B, ch 3. 2 dc in first dc. \*5 dc in sp between next two 5-dc clusters. Rep from \* to last dc. 3 dc in last dc. Join A. Turn.

**3rd row:** With A, ch 3. \*5 dc in sp between next two 5-dc clusters. Rep from \* to last dc. 1 dc in last dc. Join C. Turn.

Rep last 2 rows for pat, changing colors each row in C, B, A sequence until Cluster Section 1 measures approx 11" [28 cm], ending on a WS row. Fasten off.

## BASKETWEAVE SECTION 2

With RS facing, join A with sl st to first st of Cluster Section 1.

**1st row:** (RS). Ch 1. 1 sc in each dc to end of row. 32 sc. Turn.

**2nd row:** Ch 3 (counts as dc). 1 dc in next sc. 1 dc in each sc to end of row. Turn.

Work 3rd to 10th rows as given for Basketweave Section 1 until Basketweave Section 2 measures approx 11" [28 cm], ending on a 6th or 10th row.

**Next row:** Ch 1. 1 sc in each st to end of row. Fasten off.

## SMALL MOTIF SECTION 2

Work as given for Small Motif Section 1.

Sew Small Motif Section 2 to last row of Basketweave Section 2.

## EYELET TEXTURE SECTION 2

With RS facing, join C with sl st to top right corner sc of Small Motif Section 2.

**1st row:** (RS). Ch 3 (counts as dc). Work 31 dc evenly across top of Small Motif Section 2. 32 dc. Turn. Beg with a 2nd row, work as given for Eyelet Texture Section 1.

## LARGE MOTIF SECTION 2

Work as given for Large Motif Section 1, with B as Color 1, and C as Color 2.

Sew Large Motif Section 2 to top of Eyelet Texture Section 2.

## CLUSTER SECTION 2

With RS facing, join C with sl st to top right corner sc of Large Motif Section 2.

Work as given for Cluster Section 1.

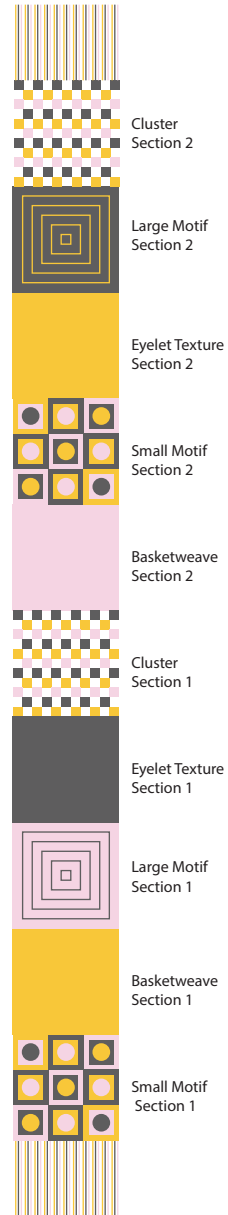
## Border

With RS facing, join B with sl st to any corner of Scarf.

Ch 1. Work 1 rnd of sc evenly around Scarf, having 3 sc in each corner. Join with sl st to first sc. Fasten off.

## Fringe

Cut lengths of A, B and C 20" [51 cm] long. Taking 3 strands tog, knot into fringe at each end of Scarf. Trim fringe evenly.



## STITCH KEY

- = chain (ch)
- = slip stitch (sl st)
- † = single crochet (sc)
- ┐ = half double crochet (hdc)
- ┘ = double crochet (dc)
- ┘ (with hook) = back post double crochet (dcbp)
- ┘ (with hook) = front post double crochet (dcfp)
- ⌒ = worked in back loop only
- = raised area of basketweave
- ⌘ = Dc3tog

