



MATERIALS

Patons® Classic Wool DK Superwash™ (1.75 oz/50 g; 125 yds/114 m) Wisteria (12309) **4 balls**

Size U.S. 7 (4.5 mm) crochet hook **or size needed to obtain gauge.** Stitch marker.

ABBREVIATIONS:

Approx =

Approximate(ly)

Beg = Begin(ning)

Ch = Chain(s)

Dcfp2tog = (Yoh and draw up a loop around post of next stitch at front of work, inserting hook from right to left. Yoh and draw through 2 loops on hook) twice. Yoh and draw through rem loops on hook.

Dec = Decrease

Hdc = Half double crochet

Hdc2tog = Yoh and draw up a loop in each of next 2 stitches. Yoh and draw through all loops on hook.

Hdcbp = Yoh and draw up a loop around post of next stitch at back of work, inserting hook from right to left. Yoh and draw through 3 loops on hook.

Hdcfp = Yoh and draw up a loop around post of next stitch at front of work, inserting hook from right to left. Yoh and draw through 3 loops on hook.

Pat = Pattern

Rem = Remain(ing)

Rep = Repeat

Rnd(s) = Round(s)

Sl st = Slip stitch

St = Stitch(es)

Yoh = Yarn over hook



CROCHET | SKILL LEVEL: INTERMEDIATE

GAUGE

17 hdc and 15 rows = 4" [10 cm].

SIZE

One size to fit average Woman.

INSTRUCTIONS

Notes: Ch 2 at beg of rnds does not count as hdc.

Hat

Ch 80 loosely. Join with sl st to first ch, taking care not to twist ch.

1st rnd: Ch 2. 1 hdc in each ch around. Join with sl st to first hdc. 80 hdc. See chart on page 6.

2nd rnd: Ch 2. 1 hdcfp around first hdc. *1 hdcbp around next hdc. 1 hdcfp around next hdc. Rep from * to last hdc. 1 hdcbp around last hdc. Join with sl st to first hdcfp. Rep last rnd until work from beg measures 1½" [4 cm].

Next rnd: Ch 2. 1 hdc in each st around. Join with sl st to first hdc. Place marker on last st. See chart on page 6.

Cable Pat: 1st rnd: Ch 2. 1 hdc in first hdc. *1 dcfp around next hdc. 1 hdc in next hdc. 1 dcfp around each of next 4 hdc. 1 hdc in next hdc. 1 dcfp around next hdc. 1 hdc in each of next 2 hdc. Rep from * 6 times more. 1 dcfp around next hdc. 1 hdc in next hdc. 1 dcfp around each of next 4 hdc. 1 hdc in next hdc. 1 dcfp around next hdc. 1 hdc in next hdc. Join with sl st to first hdc.

2nd rnd: Ch 2. 1 hdc in first hdc. *1 dcfp around next dcfp. 1 hdc in next hdc. Skip next 2 dcfp. 1 dcfp around each of next 2 dcfp. 1 dcfp around each of 2 skipped dcfp. 1 hdc in next hdc. 1 dcfp around next dcfp. 1 hdc in each of next 2 hdc. Rep from * 6 times more. 1 dcfp around next hdc. 1 hdc in next hdc. Skip next 2 dcfp. 1 dcfp around each of next 2 dcfp. 1 dcfp around each of 2 skipped dcfp. 1 hdc in next hdc. 1 dcfp around next dcfp. 1 hdc in next hdc. Join with sl st to first hdc.

3rd rnd: Ch 2. 1 hdc in first hdc. *1 dcfp around next dcfp. 1 hdc in next hdc. 1 dcfp around each of next 4 dcfp. 1 hdc in next hdc. 1 dcfp around next dcfp. 1 hdc

in each of next 2 hdc. Rep from * 6 times more. 1 dcfp around next dcfp. 1 hdc in next hdc. 1 dcfp around each of next 4 dcfp. 1 hdc in next hdc. 1 dcfp around next dcfp. 1 hdc in next hdc. Join with sl st to first hdc.

4th rnd: Ch 2. 1 hdc in first hdc. *1 dcfp around next dcfp. 1 hdc in next hdc. 1 dcfp around each of next 4 dcfp. 1 hdc in next hdc. 1 dcfp around next dcfp. 1 hdc in each of next 2 hdc. Rep from * 6 times more. 1 dcfp around next dcfp. 1 hdc in next hdc. 1 dcfp around each of next 4 dcfp. 1 hdc in next hdc. 1 dcfp around next dcfp. 1 hdc in next hdc. Join with sl st to first hdc.

Rep 2nd to 4th rnds until work from marker measures approx 6" [15 cm], ending on a 3rd rnd.

Dec Rnds: 1st rnd: Ch 2. Skip first hdc. *1 dcfp around next dcfp. 1 hdc in next hdc. 1 dcfp around each of next 4 dcfp. 1 hdc in next hdc. 1 dcfp around next dcfp. Hdc2tog. Rep from * 6 times more. 1 dcfp around next dcfp. 1 hdc in next hdc. 1 dcfp around

each of next 4 dcfp. 1 hdc in next hdc. 1 dcfp around next dcfp. 1 hdc in last hdc. Join with sl st to first dcfp. 72 sts.

2nd rnd: Ch 2. 1 dcfp around first dcfp. *1 hdc in next hdc. Dcfp2tog. 1 dcfp around each of next 2 dcfp. 1 hdc in next hdc. 1 dcfp around next dcfp. 1 hdc in next hdc. 1 dcfp around next dcfp. Rep from * 6 times more. 1 hdc in next hdc. Dcfp2tog. 1 dcfp around each of next 2 dcfp. 1 hdc in next hdc. 1 dcfp around next dcfp. 1 hdc in next hdc. Join with sl st to first dcfp. 64 sts.

3rd rnd: Ch 2. 1 dcfp around first dcfp. *1 hdc in next hdc. Skip next dcfp. Dcfp2tog. 1 dcfp around skipped dcfp. 1 hdc in next hdc. 1 dcfp in next dcfp. 1 hdc in next hdc. 1 dcfp around next dcfp. Rep from * 6 times more. 1 hdc in next hdc. Skip next dcfp. Dcfp2tog. 1 dcfp around skipped dcfp. 1 hdc in next hdc. 1 dcfp around next dcfp. 1 hdc in next hdc. Join with sl st to first dcfp. 56 sts.

4th rnd: Ch 2. 1 dcfp in first dcfp. *1 hdc in next hdc. 1 dcfp around each of next 2 dcfp. 1 hdc in next hdc. 1 dcfp around next dcfp. Skip

next hdc. 1 dcfp around next dcfp. Rep from * 6 times more. 1 hdc in next hdc. 1 dcfp around each of next 2 dcfp. 1 hdc in next hdc. 1 dcfp around next dcfp. Skip next hdc. Join with sl st to first dcfp. 48 sts.

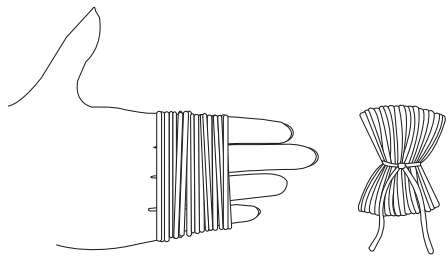
5th rnd: Ch 2. Skip first dcfp. *1 hdc in next hdc. 1 dcfp around each of next 2 dcfp. 1 hdc in next hdc. Dcfp2tog. Rep from * 6 times more. 1 hdc in next hdc. 1 dcfp around each of next 2 dcfp. 1 hdc in next hdc. 1 dcfp around next dcfp. Join with sl st to first hdc. 40 sts.

6th rnd: Ch 2. 1 hdc in first hdc. *Dcfp2tog. 1 hdc in next hdc. 1 dcfp around next dcfp. 1 hdc in next hdc. Rep from * 6 times more. Dcfp2tog. 1 hdc in next hdc. 1 dcfp around next dcfp. Join with sl st to first hdc. 32 sts.

7th rnd: Ch 2. Skip first hdc. *Dcfp around next dcfp. Dcfp2tog. Skip next hdc. Rep from * 6 times more. Dcfp around next dcfp. Dcfp2tog. Join with sl st to first st. 16 sts.

Fasten off, leaving a long end. Draw end tightly through rem sts.

Pom-pom: Wind yarn around 4 fingers approx 150 times. Remove from fingers and tie tightly in center. Cut through each side of loops. Trim to a smooth round shape. Sew to top of Hat.



CABLE MITTENS

Right Mitten

**Ch 36. Join with sl st to first ch, taking care not to twist ch.

1st rnd: Ch 2. 1 hdc in each ch around. Join with sl st to first hdc. 36 hdc.

2nd rnd: Ch 2. 1 hdcfp around first h dc. * 1 h dcba round next hdc. 1 hdcfp around next hdc. Rep from * to last st. 1 hdcba around last hdc.

3rd rnd: Ch 2. 1 hdcfp around first hdcfp. * 1 hdcba around next hdcba. 1 hdcfp around next hdcfp. Rep from * to last st. 1 hdcba around last hdcba. Join with sl st to first st.

Rep 3rd rnd until work from beg measures 2" [5 cm].**

Proceed in pat as follows:

1st rnd: Ch 2. 1 hdc in each st around. Join with sl st to first hdc. Place marker at end of rnd.

2nd rnd: Ch 2. 1 hdc in each of first 5 hdc. 1 dcfp around next hdc. 1 hdc in next hdc. 1 dcfp around each of next 4 hdc. 1 hdc in next hdc. 1 dcfp around next hdc. 1 hdc in each of next 23 hdc. Join with sl st to first hdc.

3rd rnd: Ch 2. 1 hdc in each of first 5 hdc. 1 dcfp around next dcfp. 1 hdc in next hdc. Skip next 2 dcfp. 1 dcfp around each of next 2 skipped dcfp. 1 hdc in next hdc. 1 dcfp around next dcfp. 1 hdc in each of next 23 hdc. Join with sl st to first hdc.

4th rnd: Ch 2. 1 hdc in each of first 5 hdc. 1 dcfp around next dcfp. 1 hdc in next hdc. 1 dcfp around each of next 4 dcfp. 1 hdc in next hdc. 1 dcfp around next dcfp. 1 hdc in each of next 23 hdc. Join with sl st to first hdc.

5th rnd: Ch 2. 1 hdc in each of first 5 hdc. 1 dcfp around next dcfp. 1 hdc in next hdc. 1 dcfp around

each of next 4 dcfp. 1 hdc in next hdc. 1 dcfp around next dcfp. 1 hdc in each of next 23 hdc. Join with sl st to first hdc.

6th and 7th rnds: As 3rd and 4th rnds.

Shape thumb gusset: 1st rnd:

Ch 2. 1 hdc in each of first 5 hdc. 1 dcfp around next dcfp. 1 hdc in next hdc. 1 dcfp around each of next 4 dcfp. 1 hdc in next hdc. 1 dcfp around next dcfp. 1 hdc in each of next 4 hdc. 2 hdc in each of next 2 hdc. 1 hdc in each of next 17 hdc. Join with sl st to first hdc.

2nd rnd: Ch 2. 1 hdc in each of first 5 hdc. 1 dcfp around next dcfp. 1 hdc in next hdc. Skip next 2 dcfp. 1 dcfp around each of next 2 skipped dcfp. 1 hdc in next hdc. 1 dcfp around next dcfp. 1 hdc in each of next 25 hdc. Join with sl st to first hdc.

3rd rnd: Ch 2. 1 hdc in each of first 5 hdc. 1 dcfp around next dcfp. 1 hdc in next hdc. 1 dcfp around each of next 4 dcfp. 1 hdc in next hdc. 1 dcfp around next dcfp. 1 hdc in each of next 4 hdc. 2 hdc in next hdc. 1 hdc in each of next

2 hdc. 2 hdc in next hdc. 1 hdc in each of next 17 hdc. Join with sl st to first hdc.

4th rnd: Ch 2. 1 hdc in each of first 5 hdc. 1 dcfp around next dcfp. 1 hdc in next hdc. 1 dcfp around each of next 4 dcfp. 1 hdc in next hdc. 1 dcfp around next dcfp. 1 hdc in each of next 27 hdc. Join with sl st to first hdc.

5th rnd: Ch 2. 1 hdc in each of first 5 hdc. 1 dcfp around next dcfp. 1 hdc in next hdc. Skip next 2 dcfp. 1 dcfp around each of next 2 skipped dcfp. 1 hdc in next hdc. 1 dcfp around next dcfp. 1 hdc in each of next 4 hdc. 2 hdc in next hdc. 1 hdc in each of next 4 hdc. 2 hdc in next hdc. 1 hdc in each of next 17 hdc. Join with sl st to first hdc.

6th rnd: Ch 2. 1 hdc in each of first 5 hdc. 1 dcfp around next dcfp. 1 hdc in next hdc. 1 dcfp around each of next 4 dcfp. 1 hdc in next hdc. 1 dcfp around next dcfp. 1 hdc in each of next 29 hdc. Join with sl st to first hdc.

7th rnd: Ch 2. 1 hdc in each of first 5 hdc. 1 dcfp around next dcfp. 1 hdc in next hdc. 1 dcfp around

each of next 4 dcfp. 1 hdc in next hdc. 1 dcfp around next dcfp. 1 hdc in each of next 4 hdc. 2 hdc in next hdc. 1 hdc in each of next 6 hdc. 2 hdc in next hdc. 1 hdc in each of next 17 hdc. Join with sl st to first hdc.

8th rnd: Ch 2. 1 hdc in each of first 5 hdc. 1 dcfp around next dcfp. 1 hdc in next hdc. Skip next 2 dcfp. 1 dcfp around each of next 2 dcfp. 1 dcfp around each of next 2 skipped dcfp. 1 hdc in next hdc. 1 dcfp around next dcfp. 1 hdc in each of next 31 hdc. Join with sl st to first hdc.

9th rnd: Ch 2. 1 hdc in each of first 5 hdc. 1 dcfp around next dcfp. 1 hdc in next hdc. 1 dcfp around each of next 4 dcfp. 1 hdc in next hdc. 1 dcfp around next dcfp. 1 hdc in each of next 5 hdc. Skip next 8 hdc. 1 hdc in each of next 18 hdc. Join with sl st to first hdc.

10th rnd: Ch 2. 1 hdc in each of first 5 hdc. 1 dcfp around next dcfp. 1 hdc in next hdc. 1 dcfp around each of next 4 dcfp. 1 hdc in next hdc. 1 dcfp around next dcfp. 1 hdc in each of next 23 hdc. Join with sl st to first hdc.

11th rnd: Ch 2. 1 hdc in each of first 5 hdc. 1 dcfp around next dcfp. 1 hdc in next hdc. Skip next 2 dcfp. 1 dcfp around each of next 2 dcfp. 1 dcfp around each of next 2 skipped dcfp. 1 hdc in next hdc. 1 dcfp around next dcfp. 1 hdc in each of next 23 hdc. Join with sl st to first hdc.

12th rnd: Ch 2. 1 hdc in each of first 5 hdc. 1 dcfp around next dcfp. 1 hdc in next hdc. 1 dcfp around each of next 4 dcfp. 1 hdc in next hdc. 1 dcfp around next dcfp. 1 hdc in each of next 23 hdc. Join with sl st to first hdc.

Rep 10th to 12th rnds until work from marker measures approx 8" [20.5 cm], ending on a 12th rnd.

Shape top: 1st rnd: Ch 2. Hdc2tog. 1 hdc in each of next 3 hdc. 1 dcfp around next dcfp. 1 hdc in next hdc. 1 dcfp around each of next 4 dcfp. 1 hdc in next hdc. 1 dcfp around next dcfp. 1 hdc in each of next 3 hdc. (Hdc2tog) twice. 1 hdc in each of next 14 hdc. Hdc2tog. Join with sl st to first hdc.

2nd rnd: Ch 2. Hdc2tog. 1 hdc in each of next 2 hdc. 1 dcfp around next dcfp. 1 hdc in next hdc. Skip next 2 dcfp. 1 dcfp around each of next 2 dcfp. 1 dcfp around each of next 2 skipped dcfp. 1 hdc in next hdc. 1 dcfp around next dcfp. 1 hdc in each of next 2 hdc. (Hdc2tog) twice. 1 hdc in each of next 12 hdc. Hdc2tog. Join with sl st to first hdc.

3rd rnd: Ch 2. Hdc2tog. 1 hdc in next hdc. 1 dcfp around next dcfp. 1 hdc in next hdc. 1 dcfp around each of next 4 dcfp. 1 hdc in next hdc. 1 dcfp around next dcfp. 1 hdc in next hdc. (Hdc2tog) twice. 1 hdc in each of next 10 hdc. Hdc2tog. Join with sl st to first hdc.

4th rnd: Ch 2. Hdc2tog. 1 dcfp around next dcfp. 1 hdc in next hdc. 1 dcfp around each of next 4 dcfp. 1 hdc in next hdc. 1 dcfp around next dcfp. (Hdc2tog) twice. 1 hdc in each of next 8 hdc. Hdc2tog. Join with sl st to first hdc. Fasten off. Sew top seam.

Thumb: With RS facing, join yarn with sl st at top of thumb gusset. Ch 1. 1 sc in same st as last sl st made. Work 9 more sc evenly spaced around opening. Join with sl st to first sc. 10 sc.

Next rnd: Ch 2. 1 hdc in each sc around. Join with sl st to first hdc. Rep last rnd until Thumb measures 2" [5 cm].

Next rnd: Ch 2. (Hdc2tog) 5 times. Join with sl st to first st. 5 sts. Fasten off, leaving a long end. Draw end tightly through rem sts.

Left Mitten

Work from ** to ** as given for Right Mitten.

Proceed in pat as follows:

1st rnd: Ch 2. 1 hdc in each st around. Join with sl st to first hdc. Place marker at end of rnd.

2nd rnd: Ch 2. 1 hdc in each of first 23 hdc. 1 dcfp around next hdc. 1 hdc in next hdc. 1 dcfp around each of next 4 hdc. 1 hdc in next hdc. 1 dcfp around next hdc. 1 hdc in each of next 5 hdc. Join with sl st to first hdc.

3rd rnd: Ch 2. 1 hdc in each of first 23 hdc. 1 dcfp around next dcfp. 1 hdc in next hdc. Skip next 2 dcfp. 1 dcfp around each of next 2 skipped dcfp. 1 hdc in next hdc. 1 dcfp around next dcfp. 1 hdc in each of next 5 hdc. Join with sl st to first hdc.

4th rnd: Ch 2. 1 hdc in each of first 23 hdc. 1 dcfp around next dcfp. 1 hdc in next hdc. 1 dcfp around each of next 4 dcfp. 1 hdc in next hdc. 1 dcfp around next dcfp. 1 hdc in each of next 5 hdc. Join with sl st to first hdc.

5th rnd: Ch 2. 1 hdc in each of first 23 hdc. 1 dcfp around next dcfp. 1 hdc in next hdc. 1 dcfp around each of next 4 dcfp. 1 hdc in next hdc. 1 dcfp around next dcfp. 1 hdc in each of next 5 hdc. Join with sl st to first hdc.

6th and 7th rnds: As 3rd and 4th rnds.

Shape thumb gusset: 1st rnd: Ch 2. 1 hdc in each of first 17 hdc. 2 hdc in each of next 2 hdc. 1 hdc in each of next 4 hdc. 1 dcfp around next dcfp. 1 hdc in next hdc. 1 dcfp around each of next 4 dcfp. 1 hdc in next hdc. 1 dcfp around next dcfp. 1 hdc in each of next 5 hdc. Join with sl st to first hdc.

2nd rnd: Ch 2. 1 hdc in each of first 25 hdc. 1 dcfp around next dcfp. 1 hdc in next hdc. Skip next 2 dcfp. 1 dcfp around each of next 2 dcfp. 1 dcfp around each of next 2 skipped dcfp. 1 hdc in next hdc.

1 dcfp around next dcfp. 1 hdc in each of next 5 hdc. Join with sl st to first hdc.

3rd rnd: Ch 2. 1 hdc in each of first 17 hdc. 2 hdc in next hdc. 1 hdc in each of next 2 hdc. 2 hdc in next hdc. 1 hdc in each of next 4 hdc. 1 dcfp around next dcfp. 1 hdc in next hdc. 1 dcfp around each of next 4 dcfp. 1 hdc in next hdc. 1 dcfp around next dcfp. 1 hdc in each of next 5 hdc. Join with sl st to first hdc.

4th rnd: Ch 2. 1 hdc in each of first 27 hdc. 1 dcfp around next dcfp. 1 hdc in next hdc. 1 dcfp around each of next 4 dcfp. 1 hdc in next hdc. 1 dcfp around next dcfp. 1 hdc in each of next 5 hdc. Join with sl st to first hdc.

5th rnd: Ch 2. 1 hdc in each of first 17 hdc. 2 hdc in next hdc. 1 hdc in each of next 4 hdc. 2 hdc in next hdc. 1 hdc in each of next 5 hdc. 1 dcfp around next dcfp. 1 hdc in next hdc. Skip next 2 dcfp. 1 dcfp around each of next 2 dcfp. 1 dcfp around each of next 2 skipped dcfp. 1 hdc in next hdc. 1 dcfp around next dcfp. 1 hdc in each of next 5 hdc. Join with sl st to first hdc.

6th rnd: Ch 2. 1 hdc in each of first 29 hdc. 1 dcfp around next dcfp. 1 hdc in next hdc. 1 dcfp around each of next 4 dcfp. 1 hdc in next hdc. 1 dcfp around next dcfp. 1 hdc in each of next 5 hdc. Join with sl st to first hdc.

7th rnd: Ch 2. 1 hdc in each of first 17 hdc. 2 hdc in next hdc. 1 hdc in each of next 6 hdc. 2 hdc in next hdc. 1 hdc in each of next 4 hdc. 1 dcfp around next dcfp. 1 hdc in next hdc. 1 dcfp around each of next 4 dcfp. 1 hdc in next hdc. 1 dcfp around next dcfp. 1 hdc in each of next 5 hdc. Join with sl st to first hdc.

8th rnd: Ch 2. 1 hdc in each of first 31 hdc. 1 dcfp around next dcfp. 1 hdc in next hdc. Skip next 2 dcfp. 1 dcfp around each of next 2 dcfp. 1 dcfp around each of next 2 skipped dcfp. 1 hdc in next hdc. 1 dcfp around next dcfp. 1 hdc in each of next 5 hdc. Join with sl st to first hdc.

9th rnd: Ch 2. 1 hdc in each of first 18 hdc. Skip next 8 hdc. 1 hdc in each of next 5 hdc. 1 dcfp around next dcfp. 1 hdc in next hdc. 1 dcfp around each of next 4 dcfp. 1 hdc in next hdc. 1 dcfp around next

dcfp. 1 hdc in each of next 5 hdc. Join with sl st to first hdc.

10th rnd: Ch 2. 1 hdc in each of first 23 hdc. 1 dcfp around next dcfp. 1 hdc in next hdc. 1 dcfp around each of next 4 dcfp. 1 hdc in next hdc. 1 dcfp around next dcfp. 1 hdc in each of next 5 hdc. Join with sl st to first hdc.

11th rnd: Ch 2. 1 hdc in each of first 23 hdc. 1 dcfp around next dcfp. 1 hdc in next hdc. Skip next 2 dcfp. 1 dcfp around each of next 2 dcfp. 1 dcfp around each of next 2 skipped dcfp. 1 hdc in next hdc. 1 dcfp around next dcfp. 1 hdc in each of next 5 hdc. Join with sl st to first hdc.

12th rnd: Ch 2. 1 hdc in each of first 23 hdc. 1 dcfp around next dcfp. 1 hdc in next hdc. 1 dcfp around each of next 4 dcfp. 1 hdc in next hdc. 1 dcfp around next dcfp. 1 hdc in each of next 5 hdc. Join with sl st to first hdc.

Rep 10th to 12th rnds until work from marker measures approx 8" [20.5 cm], ending on a 12th rnd.

Shape top: 1st rnd: Ch 2. Hdc2tog. 1 hdc in each of next 14 hdc. (Hdc2tog) twice. 1 hdc in each of next 3 hdc. 1 dcfp around next dcfp. 1 hdc in next hdc. 1 dcfp around each of next 4 dcfp. 1 hdc in next hdc. 1 dcfp around next dcfp. 1 hdc in each of next 3 hdc. Hdc2tog. Join with sl st to first hdc.








2nd rnd: Ch 2. Hdc2tog. 1 hdc in each of next 12 hdc. (Hdc2tog) twice. 1 hdc in each of next 2 hdc. 1 dcfp around next dcfp. 1 hdc in next hdc. Skip next 2 dcfp. 1 dcfp around each of next 2 dcfp. 1 dcfp around each of next 2 skipped dcfp. 1 hdc in next hdc. 1 dcfp around next dcfp. 1 hdc in each of next 2 hdc. Hdc2tog. Join with sl st to first hdc.

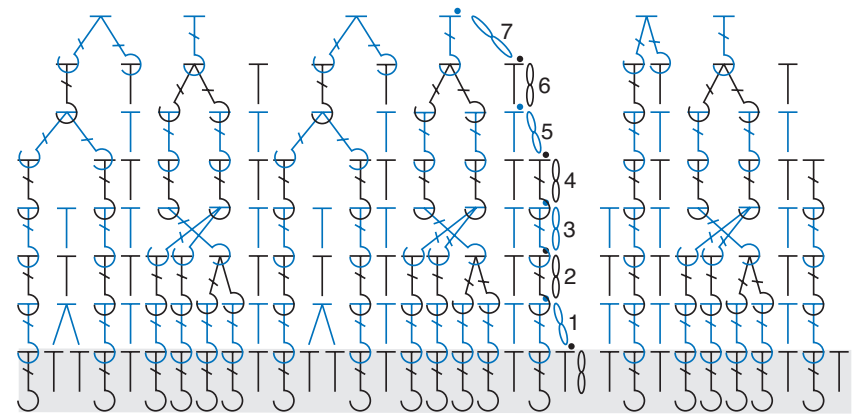
3rd rnd: Ch 2. Hdc2tog. 1 hdc in each of next 10 hdc. (Hdc2tog) twice. 1 hdc in next hdc. 1 dcfp around next dcfp. 1 hdc in next hdc. 1 dcfp around each of next 4 dcfp. 1 hdc in next hdc. 1 dcfp around next dcfp. 1 hdc in next hdc. Hdc2tog. Join with sl st to first hdc.

4th rnd: Ch 2. Hdc2tog. 1 hdc in each of next 8 hdc. (Hdc2tog) twice. 1 dcfp around next dcfp. 1 hdc in next hdc. 1 dcfp around each of next 4 dcfp. 1 hdc in next hdc. 1 dcfp around next dcfp. Hdc2tog. Join with sl st to first hdc. Fasten off. Sew top seam.

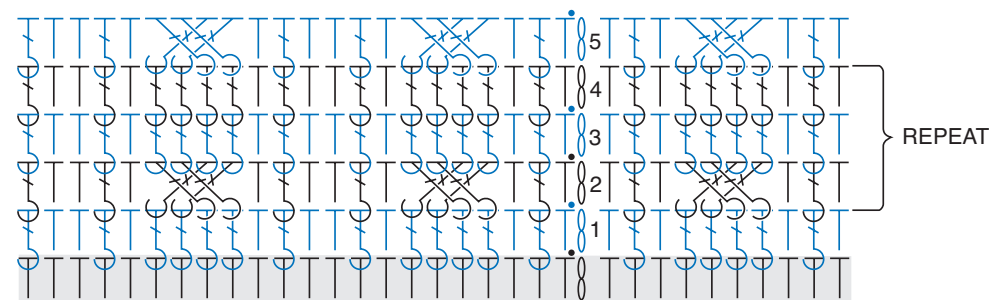
Thumb: Work as for Right Mitten.

STITCH KEY

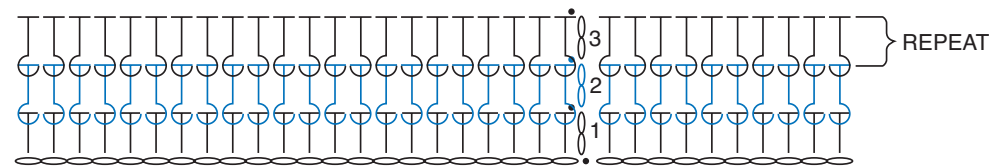
-  = chain (ch)
-  = slip stitch (sl st)
-  = half double crochet (hdc)
-  = front post half double crochet (hdcfp)
-  = back post half double crochet (hdcbp)
-  = front post double crochet (dcfp)
-  = front post double crochet 2 together (dcfp2tog)



DECREASE RND



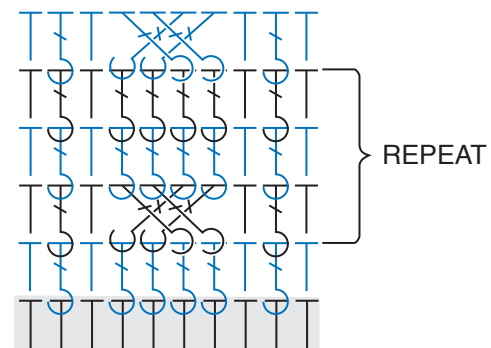
CABLE PATTERN



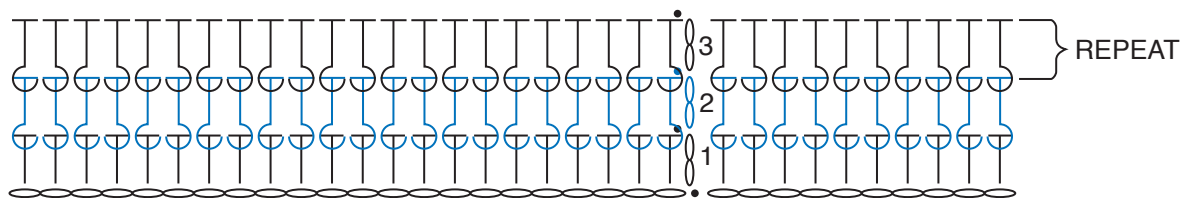
HAT RIBBING

STITCH KEY

- = chain (ch)
- = slip stitch (sl st)
- ┆ = half double crochet (hdc)
- ┆ = front post half double crochet (hdcpf)
- ┆ = back post half double crochet (hdcbp)
- ┆ = front post double crochet (dcfp)
- ┆ = front post double crochet 2 together (dcfp2tog)



CABLE PATTERN



MITTEN RIBBING